

Mayor

Rick Rosenberg

City Manager

Brock Jacobsen



City Council

Jarett Waite

Ben Shakespeare

Christa Hinton

Janene Burton

Dave Pond

CITY COUNCIL

Meeting Date: 06/Mar/24

Agenda Item: 1

Applicant: N/A

Requested by: Dustin Mouritsen

Subject: Santa Clara Elementary Crestview

Irrigation Line

Description:

Consider approval for the Santa Clara Elementary Crestview irrigation line. There will be two bids to approve. One for labor of pipe installation and one for the pipe and material. The bid opening is scheduled for 2:00 the same day as Council Meeting so I will be presenting the bid for the pipe installation to you in paper form at the meeting. Consider approval of the low bidder Scholzen products for pipe and material for \$136,190.86. This project is in our Water Master Plan as a Capitol Facilities Project and is Impact Fee eligible for the savings of 12 million gallons of culinary water annually.

Recommendation:

Approval **Cost:** N/A

Legal Approval: Yes

Finance Approval: Yes

Budget Approval: Yes

Attachments: N/A



Rosenberg Associates
 352 East Riverside Drive, Suite A-2
 St. George, Utah 84790

PROJECT 12454-23-012
PREPARED Jared Bates
DATE February 15, 2024

Engineer's Estimate - Crestview Irrigation Line
 Santa Clara, Utah

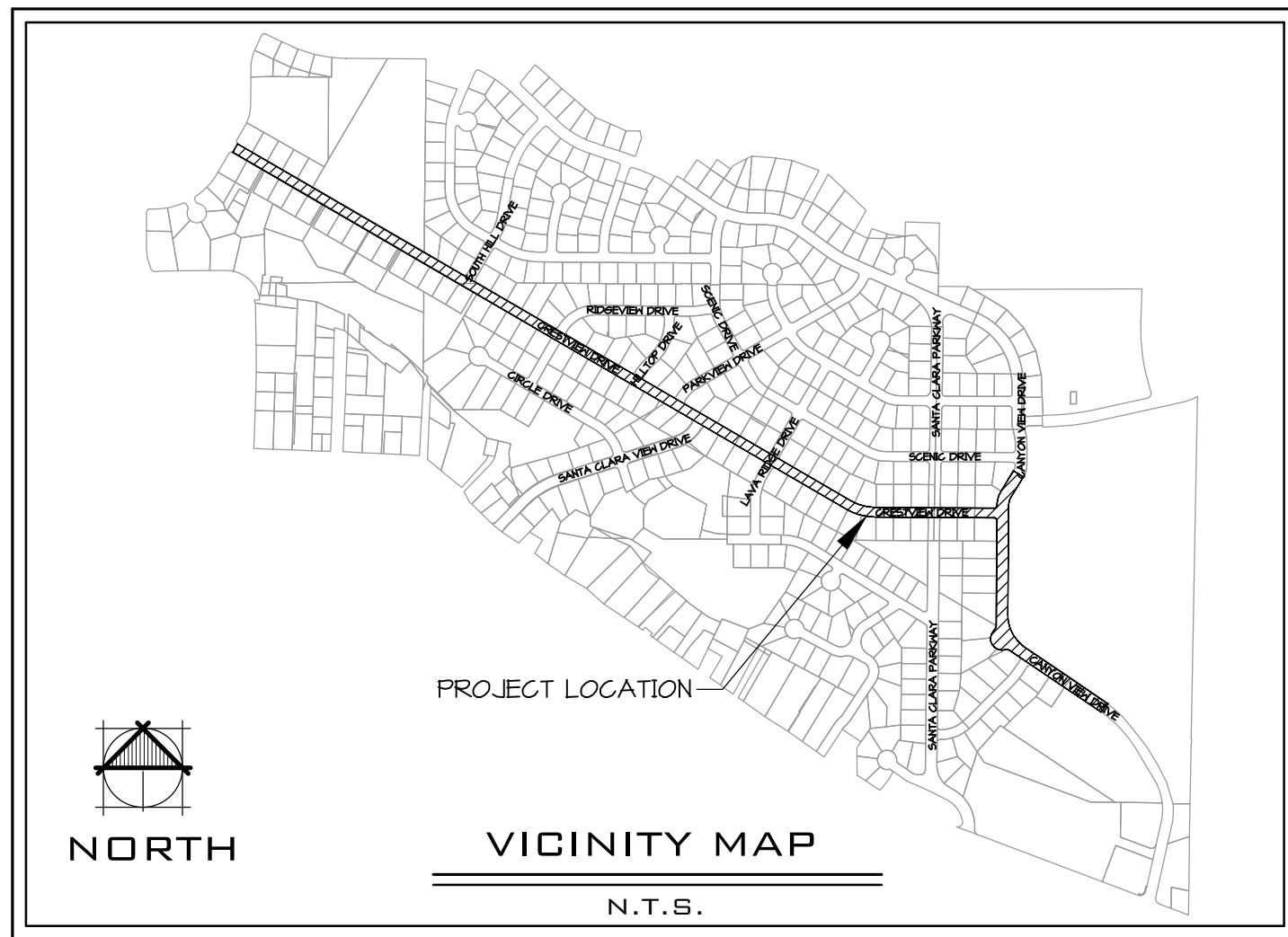
| Item | Description | Unit | Estimated Quantity | Unit Price | Total Price |
|--------------|---|-------|--------------------|-------------|---------------------|
| 1 | Mobilization | Lump | 1 | \$52,945.82 | \$52,945.82 |
| 2 | SWPPP, Traffic Control, and Site Access | Lump | 1 | \$5,000.00 | \$5,000.00 |
| 3 | Remove Existing Asphalt | Sq Ft | 26,366 | \$1.25 | \$32,957.50 |
| 4 | Asphalt 3" Depth | Sq Ft | 26,366 | \$2.50 | \$65,915.00 |
| 5 | 3/4" Road Base - 6" Depth | Sq Ft | 26,366 | \$1.20 | \$31,639.20 |
| 6 | Remove Existing Concrete Waterway | Sq Ft | 50 | \$10.00 | \$500.00 |
| 7 | Concrete Waterway | Sq Ft | 50 | \$20.00 | \$1,000.00 |
| 8 | Remove Existing Curb and Gutter | Ln Ft | 32 | \$15.00 | \$480.00 |
| 9 | 30" HB Curb and Gutter | Ln Ft | 32 | \$30.00 | \$960.00 |
| 10 | Remove Existing Sidewalk | Sq Ft | 56 | \$3.75 | \$210.00 |
| 11 | 4" Sidewalk | Sq Ft | 56 | \$7.50 | \$420.00 |
| 12 | Remove and Replace Existing Landscaping | Sq Ft | 826 | \$5.25 | \$4,336.50 |
| 13 | 8" C900 Irrigation Line | Ln Ft | 5,359 | \$60.00 | \$321,540.00 |
| 14 | 8" Irrigation Valve | Each | 9 | \$3,500.00 | \$31,500.00 |
| 15 | 4" Irrigation Valve | Each | 1 | \$2,500.00 | \$2,500.00 |
| 16 | Connect 8" Irrigation Line to Existing Irrigation Line (Crestview) Park | Lump | 1 | \$5,000.00 | \$5,000.00 |
| 17 | Connect 4" Irrigation Line to Existing Irrigation Line (Crestview) Park | Lump | 1 | \$2,500.00 | \$2,500.00 |
| 18 | Stub 8" Irrigation Line within Santa Clara Elementary School Property | Lump | 1 | \$3,000.00 | \$3,000.00 |
| 19 | 10' x 10' Precast Concrete Vault w/ Aluminum Access | Lump | 1 | \$20,000.00 | \$20,000.00 |
| Total | | | | | \$582,404.02 |

The user of this opinion of cost understands that **Rosenberg Associates** has no control over the cost or availability of labor, equipment or materials, or over market conditions or the Contractor's method of pricing; and the opinions of probable construction costs are made on the basis of professional judgment and experience. **Rosenberg Associates** makes no warranty, express or implied, that the bids or the negotiated cost of the work will not vary from the above.



CRESTVIEW IRRIGATION DESIGN

LOCATED IN SECTION 9, TOWNSHIP 42 SOUTH, RANGE 16 WEST OF THE
SALT LAKE BASE AND MERIDIAN
CITY OF SANTA CLARA, WASHINGTON COUNTY, UTAH.



GENERAL NOTES

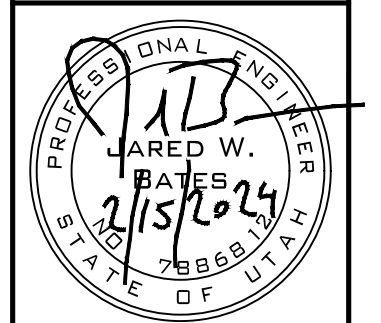
1. THE CONTRACTOR IS REQUIRED TO CALL THE CITY FOR INSPECTION OF ALL IMPROVEMENTS RELATED TO THIS PROJECT.
2. THE CONTRACTOR IS REQUIRED TO OBTAIN AN ENCROACHMENT PERMIT FOR ANY WORK DONE IN A PUBLIC RIGHT-OF-WAY.
3. ANY NECESSARY MODIFICATIONS SHALL BE APPROVED BY THE DESIGN ENGINEER AND CITY PRIOR TO CONSTRUCTION.
4. ALL WORK SHALL BE CONTAINED ON THE SUBJECT SITE ONLY. NO STOCKPILING OR CONSTRUCTION ACTIVITY SHALL OCCUR OFF OF THE APPROVED PROJECT AREA.
5. THE CONTRACTOR SHALL PROVIDE A TEMPORARY TRASH ENCLOSURE ON SITE DURING ALL CONSTRUCTION ACTIVITIES TO CONTAIN DEBRIS AND PREVENT AIRBORNE LITTERING OFF SITE.
6. A WATER TRUCK SHALL BE USED ON SITE TO WET DOWN ALL EARTHWORK AND TO CONTROL AIRBORNE PARTICLES.
7. UNLESS SHOWN OTHERWISE ON THESE PLANS OR AS INDICATED IN THE PROJECT CONTRACT DOCUMENTS, ALL CONSTRUCTION SHALL CONFORM TO THE CITY OF SANTA CLARA STANDARD SPECIFICATIONS FOR DESIGN AND CONSTRUCTION, "THE INTERNATIONAL BUILDING CODE" AND "THE INTERNATIONAL BUILDING CODE" LATEST EDITIONS AS ADMINISTERED BY THE CITY OF SANTA CLARA.
8. THE CONTRACTOR SHALL BE RESPONSIBLE FOR THE LOCATION OF AND PROTECTION OF ALL EXISTING UNDERGROUND UTILITIES DURING CONSTRUCTION.
9. ALL EXCAVATIONS AND GRADINGS SHALL BE IN ACCORDANCE WITH THE REQUIREMENTS OF CITY OF SANTA CLARA, SPECIFICALLY APPENDIX "J" OF "THE INTERNATIONAL BUILDING CODE," LATEST EDITION.
10. PROJECTS SHALL INSTALL AN INFORMATIONAL SIGN ON SITE BEFORE CONSTRUCTION START. THIS SIGN WILL HAVE A MINIMUM SIZE, PLACEMENT LOCATION AND CONTENT INFORMATION WITH THE COMPANY NAME, PHONE CONTACT & GRADING PERMIT NUMBER.
11. PROJECTS SHALL SUBMIT A DUST CONTROL PLAN WITH DETAILS ON EQUIPMENT, SCHEDULING AND REPORTING OF DUST CONTROL ACTIVITIES.
12. A MANDATORY PRE-CONSTRUCTION MEETING WILL BE REQUIRED ON ALL PROJECTS PRIOR TO ANY GRUBBING, GRADING, OR CONSTRUCTION ACTIVITIES. THE PERMIT HOLDER WILL BE REQUIRED TO NOTIFY ALL DEVELOPMENT SERVICES INSPECTORS.
13. ALL WORK AND MATERIALS SHALL MEET CITY OF SANTA CLARA STANDARDS.

| | |
|--------------|--------------|
| DATE: | 2/9/24 |
| JOB NO.: | 12454-23-012 |
| DESIGNED BY: | DMH |
| CHECKED BY: | JWB |
| DWG.: | CONST. PLANS |
| DATE: | |
| REVISIONS: | |

ROSENBERG
A S S O C I A T E S
CIVIL ENGINEERS • LAND SURVEYORS

352 East Riverside Drive, Suite A-2
St. George, Utah 84790
Ph (435) 673-8586; Fx (435) 673-8397
www.rachil.com

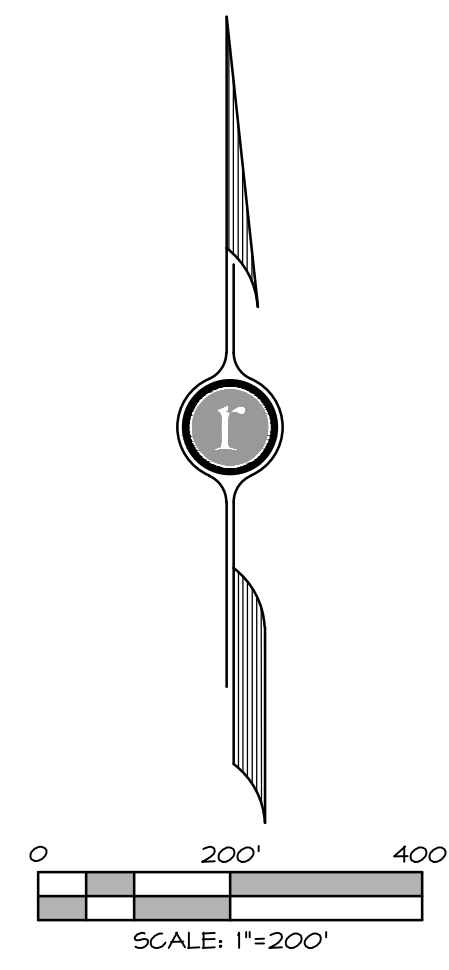
COVER SHEET
FOR
CRESTVIEW IRRIGATION DESIGN
SANTA CLARA
UTAH



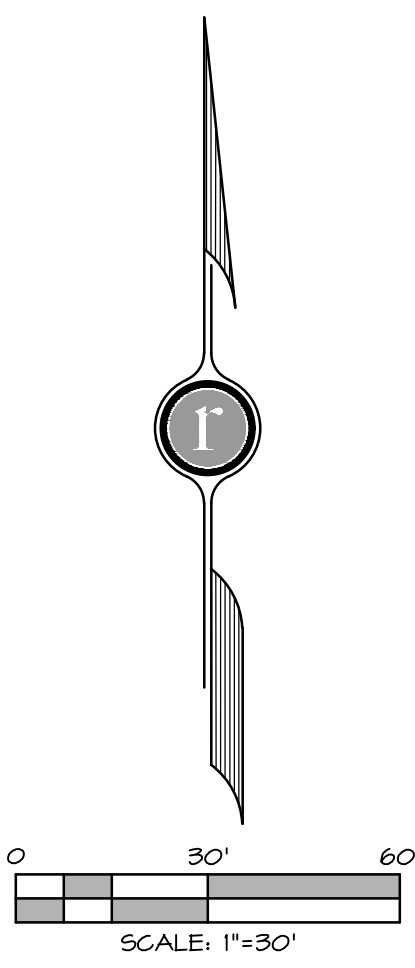
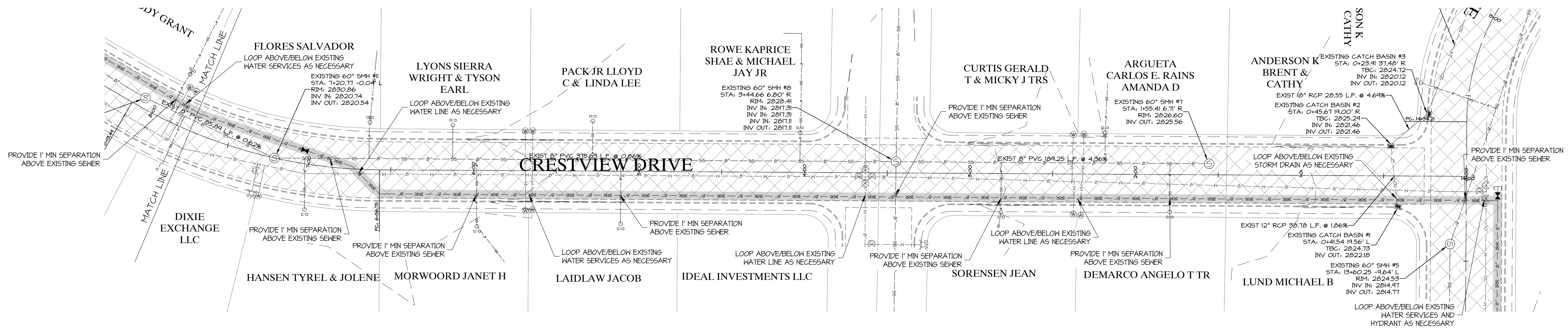
- POWER**
SANTA CLARA CITY POWER DEPT.
2603 SANTA CLARA DRIVE
SANTA CLARA, UTAH 84765
(435) 673-6712
- WATER**
SANTA CLARA CITY WATER SERVICES
2603 SANTA CLARA DRIVE
SANTA CLARA, UTAH 84765
(435) 673-6712
- SEWER**
SANTA CLARA CITY PUBLIC WORKS
2603 SANTA CLARA DRIVE
SANTA CLARA, UTAH 84765
(435) 673-6712
- TELEPHONE**
CENTURY LINK COMMUNICATIONS
546 N. 1400 E. (TRAILER)
ST. GEORGE, UTAH 84710
(435) 673-9639
- NATURAL GAS**
DOMINION ENERGY
1155 E 350 N
ST. GEORGE, UTAH 84710
(435) 674-6116
- CATV SERVICE**
TDS TELECOM
111 WEST 700 SOUTH
ST. GEORGE, UTAH 84710
(866) 622-8848

811
Know what's below.
Call before you dig.

NOTICE: UTILITIES ARE SHOWN ON PLANS FOR THE CONVENIENCE OF THE CONTRACTOR ONLY. THE CONTRACTOR IS RESPONSIBLE FOR THE LOCATION AND PROTECTION OF ALL UTILITIES. THE ENGINEER ASSUMES NO RESPONSIBILITY FOR UTILITIES NOT SHOWN OR SHOWN INCORRECTLY.



| SHEET INDEX | |
|--------------|--|
| SHEET NUMBER | SHEET DESCRIPTION |
| 1 | COVER SHEET |
| 2 | PLAN & PROFILE - CANYON VIEW DRIVE 8+00 - 0+00 |
| 3 | PLAN & PROFILE - CANYON VIEW DRIVE 14+76.59 - 8+00 |
| 4 | PLAN & PROFILE - CRESTVIEW DRIVE 8+00 - 0+00 |
| 5 | PLAN & PROFILE - CRESTVIEW DRIVE 16+00 - 8+00 |
| 6 | PLAN & PROFILE - CRESTVIEW DRIVE 25+00 - 16+00 |
| 7 | PLAN & PROFILE - CRESTVIEW DRIVE 34+00 - 25+00 |
| 8 | PLAN & PROFILE - CRESTVIEW DRIVE 40+74.59 - 34+00 |
| 9 | DETAIL SHEET |

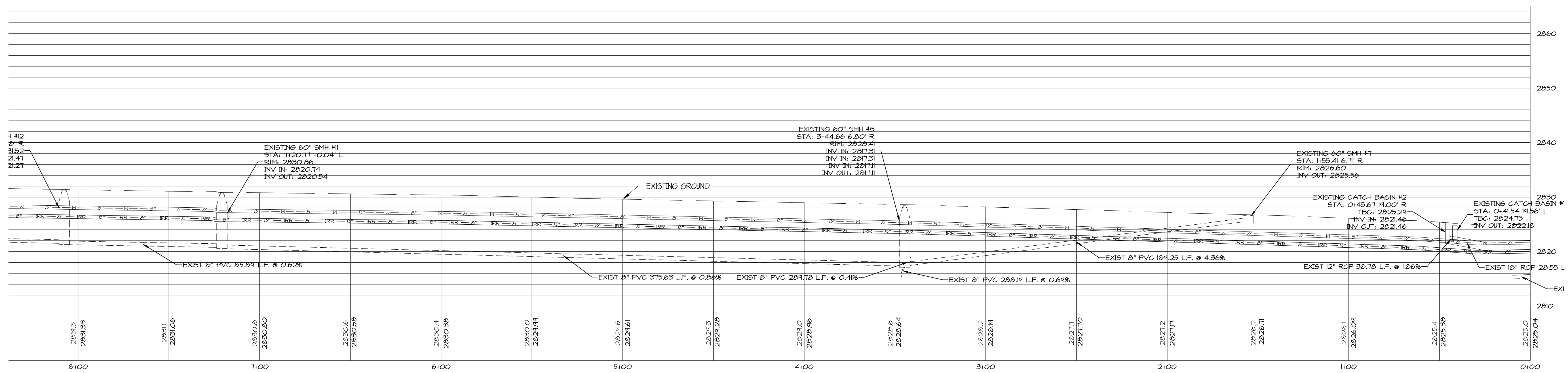


Know what's below.
 Call before you dig.

NOTICE: ENGINE UTILITIES ARE SHOWN ON PLANS FOR THE CONVENIENCE OF THE CONTRACTOR ONLY. THE CONTRACTOR IS RESPONSIBLE FOR THE LOCATION AND PROTECTION OF ALL UTILITIES. THESE ENGINEERS ASSUME NO RESPONSIBILITY FOR UTILITIES NOT SHOWN OR WHICH ARE INCOMPLETE.

*NOTE: SEWER LATERALS, WATER SERVICES, AND HYDRANT CONNECTIONS TO BE FIELD VERIFIED BY CONTRACTOR. LOCATIONS SHOWN ON PLANS ARE BASED ON BEST AVAILABLE DATA.

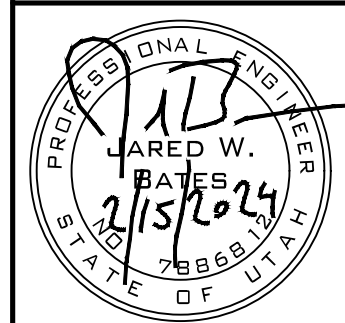
* CONTRACTOR IS REQUIRED TO LOCATE AND ACCOMMODATE THE RELOCATION OF ALL OTHER UTILITIES AS REQUIRED TO CONSTRUCT THE PROPOSED IMPROVEMENTS.

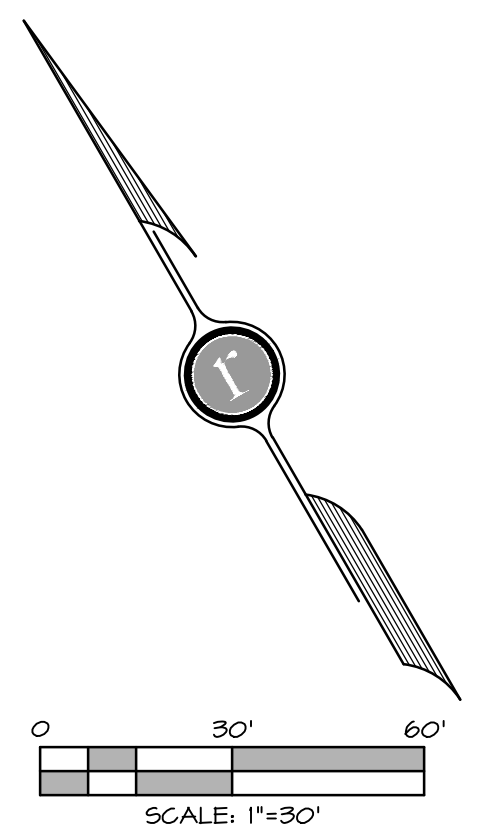
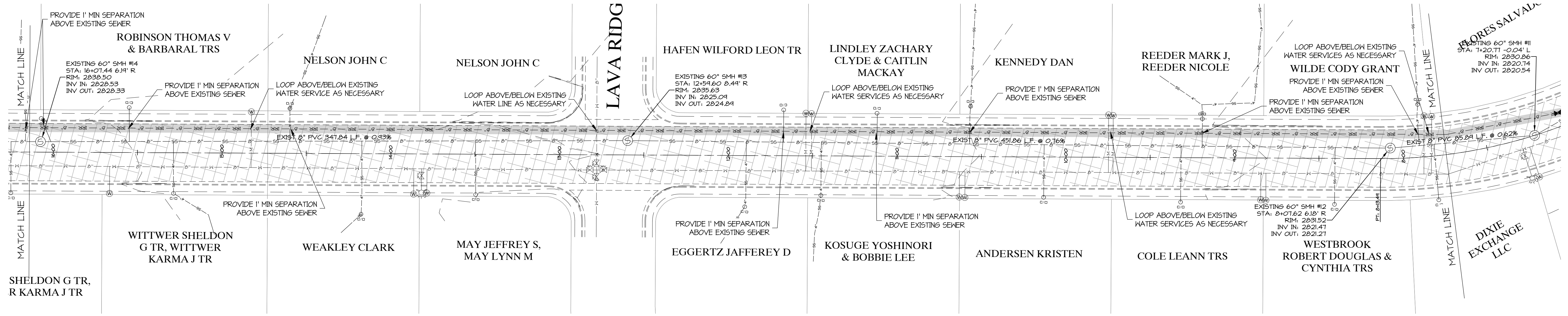


CRESTVIEW DRIVE STA 8+00 - 0+00

HORIZ. SCALE = 1" = 30'
 VER. SCALE = 1" = 10'

352 East Riverside Drive, Suite A-2
 St. George, Utah 84790
 Ph (435) 673-8586; Fx (435) 673-8397
 www.racivil.com



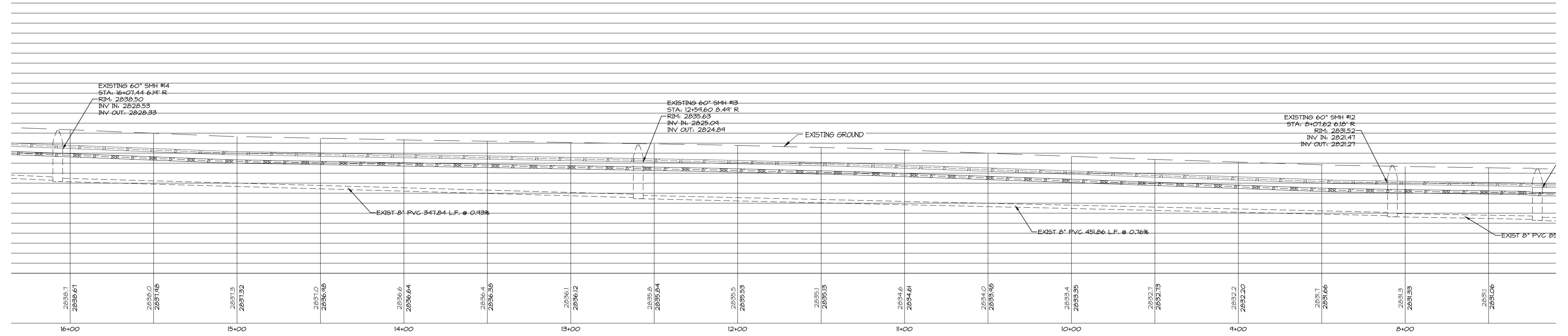


Know what's below.
 Call before you dig.

NOTES:
 1. UTILITIES SHOWN ARE SHOWN ON PLANS FOR THE CONFORMANCE OF THE CONTRACTOR. THE CONTRACTOR IS RESPONSIBLE FOR THE LOCATION AND PROTECTION OF ALL UTILITIES. THE ENGINEER ASSUMES NO RESPONSIBILITY FOR UTILITIES NOT SHOWN OR SHOWN INCORRECTLY.

*NOTE: SEWER LATERALS, WATER SERVICES, AND HYDRANT CONNECTIONS TO BE FIELD VERIFIED BY CONTRACTOR. LOCATIONS SHOWN ON PLANS ARE BASED ON BEST AVAILABLE DATA.

* CONTRACTOR IS REQUIRED TO LOCATE AND ACCOMMODATE THE RELOCATION OF ALL OTHER UTILITIES AS REQUIRED TO CONSTRUCT THE PROPOSED IMPROVEMENTS.



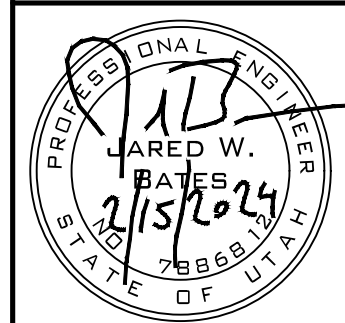
CRESTVIEW DRIVE STA 16+00 - 8+00

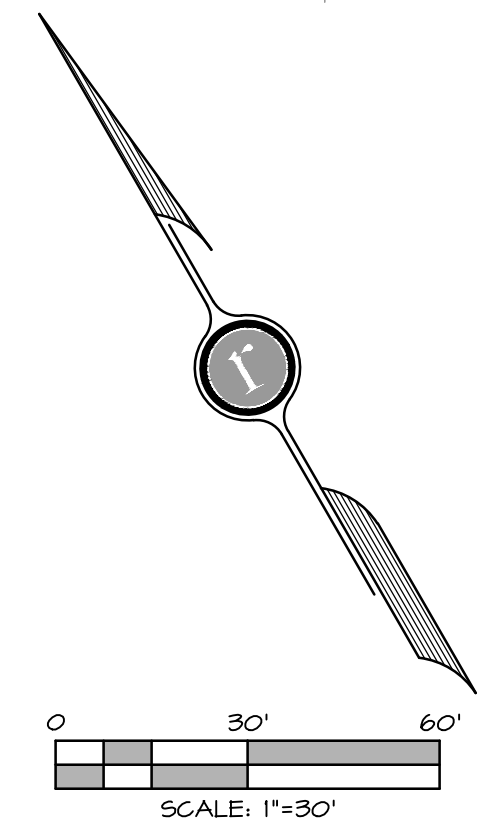
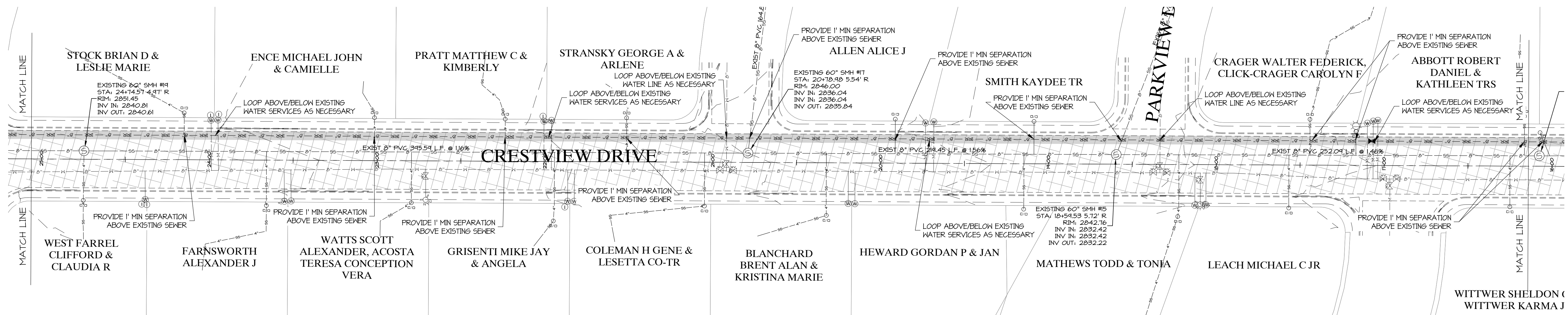
HORIZ. SCALE = 1" = 30'
 VER. SCALE = 1" = 10'

ROSENBERG
 A S S O C I A T E S
 CIVIL ENGINEERS • LAND SURVEYORS

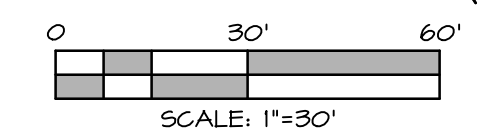
352 East Riverside Drive, Suite A-2
 St. George, Utah 84790
 Ph (435) 673-8586; Fx (435) 673-8397
 www.racivil.com

PLAN & PROFILE - CRESTVIEW DRIVE 16+00 - 8+00
 FOR
 CRESTVIEW IRRIGATION DESIGN
 SANTA CLARA
 UTAH



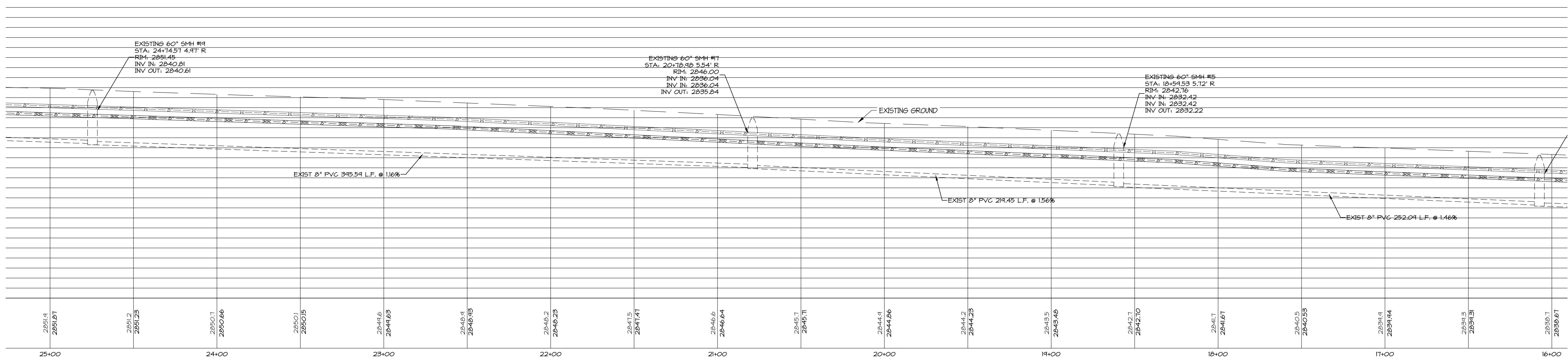


Know what's below.
 Call before you dig.



*NOTE: SEWER LATERALS, WATER SERVICES, AND HYDRANT CONNECTIONS TO BE FIELD VERIFIED BY CONTRACTOR. LOCATIONS SHOWN ON PLANS ARE BASED ON BEST AVAILABLE DATA.

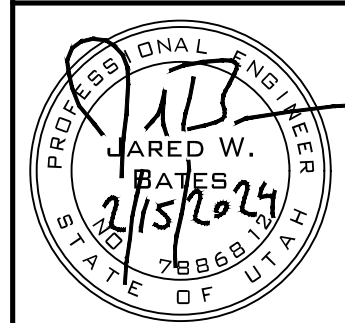
* CONTRACTOR IS REQUIRED TO LOCATE AND ACCOMMODATE THE RELOCATION OF ALL OTHER UTILITIES AS REQUIRED TO CONSTRUCT THE PROPOSED IMPROVEMENTS.

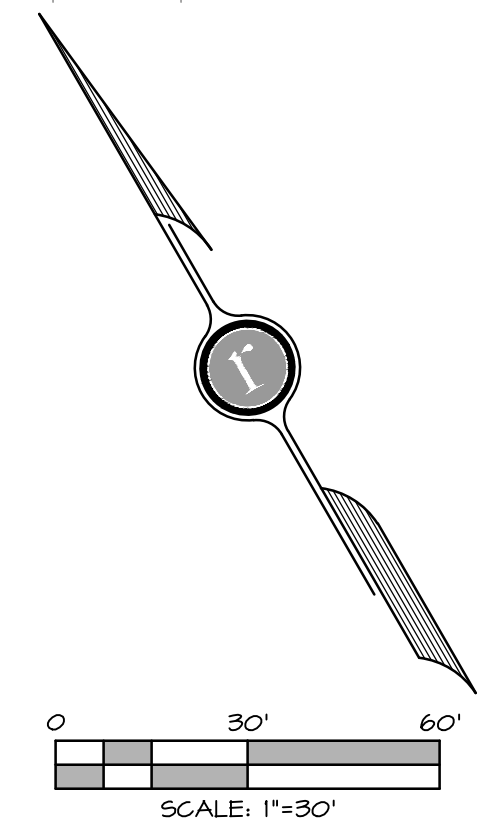
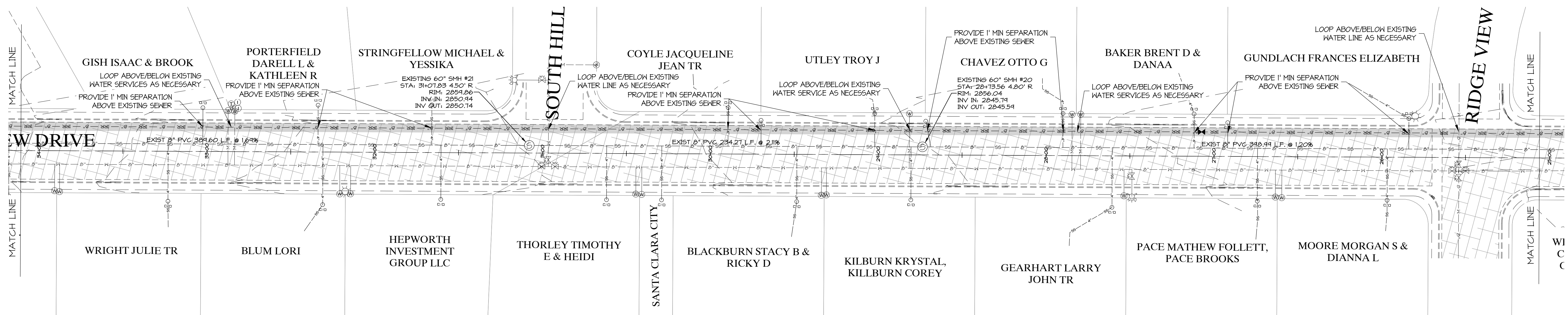


CRESTVIEW DRIVE STA 25+00 - 16+00

HORIZ. SCALE = 1" = 30'
 VER. SCALE = 1" = 10'

352 East Riverside Drive, Suite A-2
 St. George, Utah 84790
 Ph (435) 673-8586; Fx (435) 673-8397
 www.racivil.com



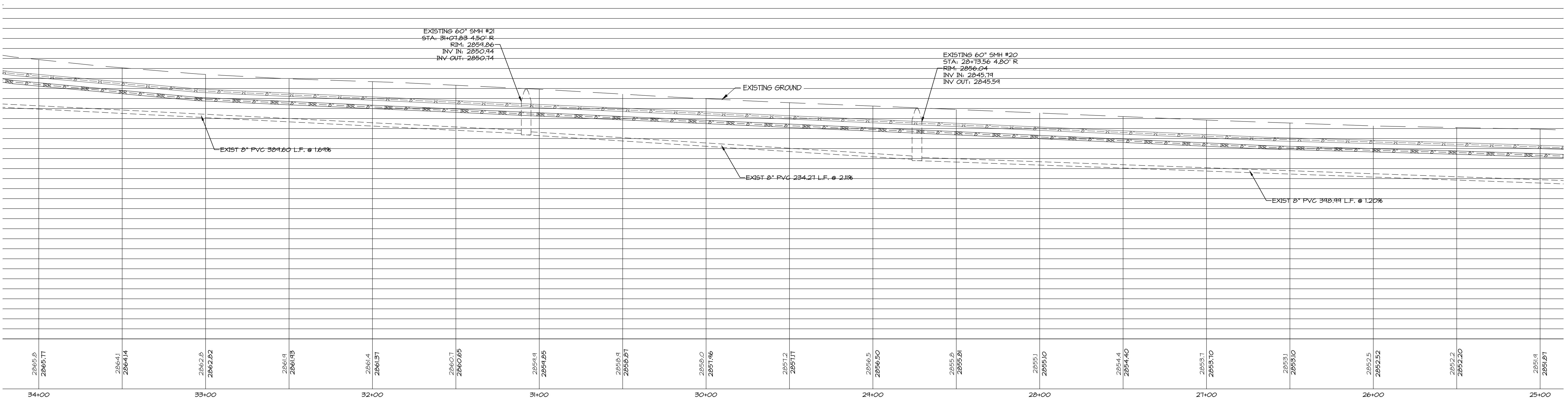


Know what's below.
 Call before you dig.

NOTES:
 EXISTING UTILITIES ARE SHOWN ON PLANS FOR THE CONVENIENCE OF THE CONTRACTOR ONLY. THE CONTRACTOR IS RESPONSIBLE FOR THE LOCATION AND PROTECTION OF ALL UTILITIES. THE CONTRACTOR SHALL BE RESPONSIBLE FOR UTILITIES NOT SHOWN OR SHOWN INCORRECTLY.

*NOTE: SEWER LATERALS, WATER SERVICES, AND HYDRANT CONNECTIONS TO BE FIELD VERIFIED BY CONTRACTOR. LOCATIONS SHOWN ON PLANS ARE BASED ON BEST AVAILABLE DATA.

* CONTRACTOR IS REQUIRED TO LOCATE AND ACCOMMODATE THE RELOCATION OF ALL OTHER UTILITIES AS REQUIRED TO CONSTRUCT THE PROPOSED IMPROVEMENTS.



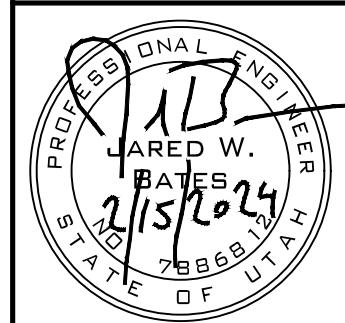
CRESTVIEW DRIVE STA 34+00 - 25+00

HORIZ. SCALE = 1" = 30'
 VER. SCALE = 1" = 10'



352 East Riverside Drive, Suite A-2
 St. George, Utah 84790
 Ph (435) 673-8586; Fx (435) 673-8397
 www.racivil.com

PLAN & PROFILE - CRESTVIEW DRIVE 34+00 - 25+00
 FOR
 CRESTVIEW IRRIGATION DESIGN
 SANTA CLARA
 UTAH





Scholzen Products Company, Inc.

548 West 100 North
 HURRICANE, UT 84737
 Tel. 435-635-4441 Fax. 435-635-9403

QUOTE

Customer Copy

| | |
|--------------|------------|
| Order Number | 6806868-00 |
| Order Date | 02/16/24 |
| Page | 1 of 3 |

Bill To: **CITY OF SANTA CLARA**

2603 SANTA CLARA DR
SANTA CLARA, UT 84765

Ship To: **WATERWORKS DEPT**
3979 SANTA CLARA DRIVE
SANTA CLARA, UT 84765-5346

| Customer # | Quoted to | Quoted by | Instructions | Ship Via |
|------------|-----------|-----------|--------------|-------------|
| 102650 | | JDS | | Do Not Mail |

| Line | Item # | Description | UM | Ordered | Unit Price | Amount |
|--|---------------|--|----|---------|------------|------------------|
| ALL ***WATERWORKS*** PURCHASES, PLEASE RUN PAYMENT THRU BILL & PAY. THANK YOU | | | | | | |
| ITEM # 13 | | | | | | |
| 1 | PV080-900P | 8" C-900 DR18 PURPLE PIPE | FT | 5360 | 19.45 | 104252.00 |
| 2 | SP14/1-PURPLE | 14/IUF TRACER WIRE-PURPL 500'/2500' | FT | 5500 | 202.23 | 1112.27 |
| 3 | EB1508 | 8" JOINT RESTRAINT FOR C-900 PRC1108 | EA | 40 | 105.24 | 4209.60 |
| 4 | TY080FT-I | 8"FLG TEE IMPORT 132882 | EA | 2 | 595.40 | 1190.80 |
| 5 | TY08MFA-I | 8"MJ X FLG ADPT LESS ACC IMPORT 371205 | EA | 2 | 169.00 | 338.00 |
| 6 | BN8BNG | 8" BOLT, NUT / GASKET SET | EA | 6 | 26.00 | 156.00 |
| 7 | EB2008PSC | 8"MEGALUG FOR PVC W/ ACCS PVCCK4008 | EA | 2 | 86.72 | 173.44 |
| 8 | TY08M22-I | 8"MJ 22-1/2 BEND IMPORT 100256 | EA | 2 | 161.85 | 323.70 |
| 9 | TY08M45-I | 8"MJ 45 BEND LESS ACCS IMPORT 100270 | EA | 4 | 165.75 | 663.00 |
| 10 | EB2008PSC | 8"MEGALUG FOR PVC W/ ACCS PVCCK4008 | EA | 12 | 86.72 | 1040.64 |
| SUBTOTAL | | | | | | 113459.45 |
| ITEM # 14 | | | | | | |
| 11 | KE4571X8 | 8" MJ GATE VALVE LESS ACCS | EA | 3 | 1826.30 | 5478.90 |
| 12 | KE4572X8 | 8"MJ X FLG GATE VALVE LESS ACC | EA | 5 | 1791.74 | 8958.70 |
| 13 | KE4561X8 | 8" FLG. GATE VALVE | EA | 1 | 1783.33 | 1783.33 |
| 14 | EB2008PSC | 8"MEGALUG FOR PVC W/ ACCS PVCCK4008 | EA | 11 | 86.72 | 953.92 |
| 15 | TY564A-KIT | 3'-4' SLIP VALVE BOX AND LID M-8040-SG | EA | 9 | 124.23 | 1118.07 |

Contin

Total Due

TERMS: Customer agrees to pay a service charge of 2% per month, a true rate of 24% per annum on any amount past due and to pay reasonable attorney's fees if it becomes necessary to file suit to enforce collection. Accounts past due may be placed on a COD basis without notice. Special orders may not be returned or payment refunded. No items will be accepted for return without authorization. All returns are subject to a restocking charge plus any freight charges incurred.



Scholzen Products Company, Inc.

548 West 100 North
 HURRICANE, UT 84737
 Tel. 435-635-4441 Fax. 435-635-9403

QUOTE

Customer Copy

| | |
|--------------|------------|
| Order Number | 6806868-00 |
| Order Date | 02/16/24 |
| Page | 2 of 3 |

Bill To: **CITY OF SANTA CLARA**

2603 SANTA CLARA DR
SANTA CLARA, UT 84765

Ship To: **WATERWORKS DEPT**
3979 SANTA CLARA DRIVE
SANTA CLARA, UT 84765-5346

| Customer # | Quoted to | Quoted by | Instructions | Ship Via |
|------------|-----------|-----------|--------------|-------------|
| 102650 | | JDS | | Do Not Mail |

| Line | Item # | Description | UM | Ordered | Unit Price | Amount |
|------------------|------------|--|----|---------|------------|-----------------|
| SUBTOTAL | | | | | | 18292.92 |
| <i>ITEM # 15</i> | | | | | | |
| 16 | KE4572X4 | 4" MJ X FLG GATE VALVE LESS ACC | EA | 1 | 591.27 | 591.27 |
| 17 | EB2004PSC | 4" MEGALUG PVC W/ACCS 2004PEC PVCCK4004 | EA | 1 | 51.35 | 51.35 |
| 18 | TY564A-KIT | 3'-4' SLIP VALVE BOX AND LID M-8040-SG | EA | 1 | 124.23 | 124.23 |
| SUBTOTAL | | | | | | 766.85 |
| <i>ITEM # 16</i> | | | | | | |
| 19 | TY080MT-I | 8" MJ TEE IMPORT 101413 | EA | 1 | 301.60 | 301.60 |
| 20 | TY080FT-I | 8" FLG TEE IMPORT 132882 | EA | 2 | 595.40 | 1190.80 |
| 21 | TY08MFA-I | 8" MJ X FLG ADPT LESS ACC IMPORT 371205 | EA | 2 | 169.00 | 338.00 |
| 22 | BN8BNG | 8" BOLT, NUT / GASKET SET | EA | 6 | 26.00 | 156.00 |
| 23 | EB2008PSC | 8" MEGALUG FOR PVC W/ ACCS PVCCK4008 | EA | 3 | 86.72 | 260.16 |
| SUBTOTAL | | | | | | 2246.56 |
| <i>ITEM # 17</i> | | | | | | |
| 24 | TY084MFT-I | 8 X 4 MJ X FLG TEE LESS ACCS. IMPORT 422549 | EA | 1 | 270.40 | 270.40 |
| 25 | TY08MS-I | 8" MJ SLEEVE IMPORT 137412 | EA | 1 | 204.75 | 204.75 |
| 26 | EB2008PSC | 8" MEGALUG FOR PVC W/ ACCS PVCCK4008 | EA | 4 | 86.72 | 346.88 |
| 27 | BN4BNG | 4" BOLT, NUT, & GASKET SET | EA | 1 | 10.36 | 10.36 |

Contin

Total Due

TERMS: Customer agrees to pay a service charge of 2% per month, a true rate of 24% per annum on any amount past due and to pay reasonable attorney's fees if it becomes necessary to file suit to enforce collection. Accounts past due may be placed on a COD basis without notice. Special orders may not be returned or payment refunded. No items will be accepted for return without authorization. All returns are subject to a restocking charge plus any freight charges incurred.



Scholzen Products Company, Inc.

548 West 100 North
 HURRICANE, UT 84737
 Tel. 435-635-4441 Fax. 435-635-9403

QUOTE

Customer Copy

| | |
|--------------|------------|
| Order Number | 6806868-00 |
| Order Date | 02/16/24 |
| Page | 3 of 3 |

Bill To: **CITY OF SANTA CLARA**

2603 SANTA CLARA DR
SANTA CLARA, UT 84765

Ship To: **WATERWORKS DEPT**
3979 SANTA CLARA DRIVE
SANTA CLARA, UT 84765-5346

| Customer # | Quoted to | Quoted by | Instructions | Ship Via |
|------------|-----------|-----------|--------------|-------------|
| 102650 | | JDS | | Do Not Mail |

| Line | Item # | Description | UM | Ordered | Unit Price | Amount |
|------------------|------------|---|----|---------|------------|---------------|
| SUBTOTAL | | | | | | 832.39 |
| <i>ITEM # 18</i> | | | | | | |
| 28 | TY08MF90-I | 8" MJ X FLG 90 ELL LESS ACCS IMPORT 422396 | EA | 1 | 299.65 | 299.65 |
| 29 | TY08MSC-I | 8" MJ CAP LESS ACCS IMPORT 247968 | EA | 1 | 93.60 | 93.60 |
| 30 | BN8BNG | 8" BOLT, NUT / GASKET SET | EA | 1 | 26.00 | 26.00 |
| 31 | EB2008PSC | 8" MEGALUG FOR PVC W/ ACCS PVC PK4008 | EA | 2 | 86.72 | 173.44 |
| SUBTOTAL | | | | | | 592.69 |
| Total | | | | | | 136190.86 |
| Invoice Total | | | | | | 136190.86 |

Last Page
Lines Total 31

| | |
|------------------|------------------|
| Total Due | 136190.86 |
|------------------|------------------|

TERMS: Customer agrees to pay a service charge of 2% per month, a true rate of 24% per annum on any amount past due and to pay reasonable attorney's fees if it becomes necessary to file suit to enforce collection. Accounts past due may be placed on a COD basis without notice. Special orders may not be returned or payment refunded. No items will be accepted for return without authorization. All returns are subject to a restocking charge plus any freight charges incurred.