

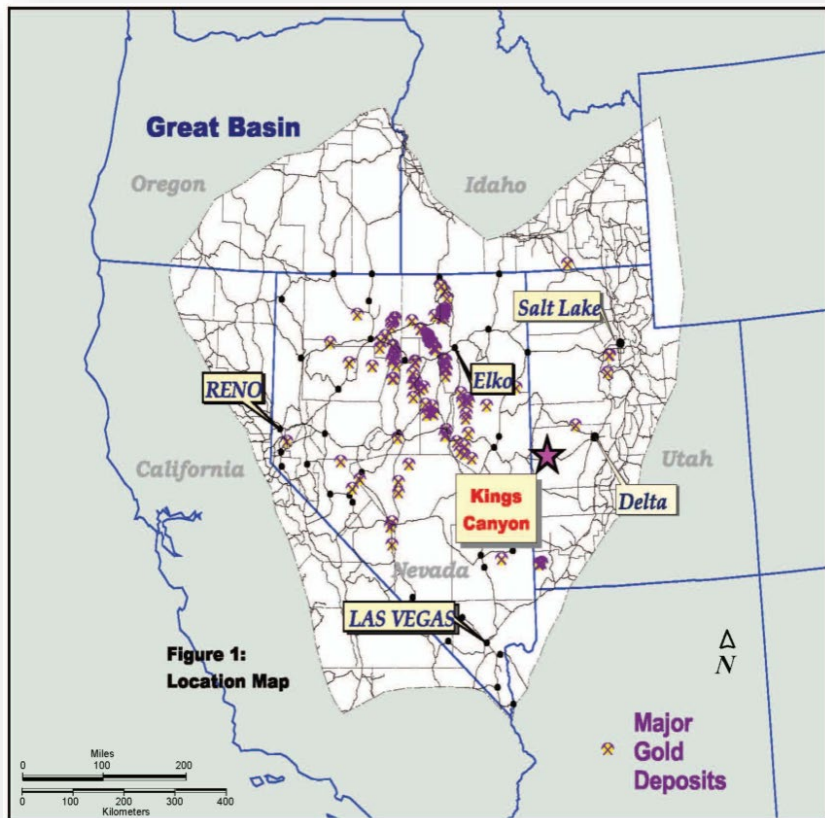
Other Business Arrangement (ML 54418-OBA)

Kings Canyon (Au, Ag) Project
Millard County, Utah
Geomark Minerals USA Inc.

Tyler Wiseman – Lease Manager / Geoscientist



Kings Canyon (Au, Ag) OBA Millard County Geologic Overview



**LOCATION MAP
KINGS CANYON PROPERTIES
Millard County, Utah**

Northern Confusion Range							
AGE	MAP SYMBOL	ROCK UNIT	THICKNESS FEET	METERS	FOSSILS, ISOTOPIC AGES AND OTHER INFORMATION	REFERENCES	
VARIOUS	Tst	Alluvial, eolian, and lacustrine deposits	0-200s	0-60s	Lake Bonneville deposits	Sack, 1990	
TERTIARY	Ttr	Wah Wah Springs Tuff, Needles Range Group	100-400	30-120	30.5 my crystal-rich tuff	Hose, 1965b;	
	Tsr	Skull Rock Conglomerate	0-120	0-40	Eureka Quartzite boulders	Hose and Repenning, 1963;	
	Tl	Lacustrine limestone	300	60	Mt. and a Hill Canyon 31.4 my ArAr	Anderson, 1983; this bulletin	
	Twd	Windows Butte Tuff	<20	<6	32.4 my quartz crystals		
TRIASSIC	Tt	Tunnel Spring Tuff	0-20	0-6	ANGULAR UNCONFORMITY Play claystone, thin limestone Conodonts		
	Tt	Thaynes Formation	1,935	590	Meloceras (cephalopod) Siliceous nodules Pantostrophe (brachiopod)		
PERMIAN	Pg	Gerster Limestone	1,100	335	Gypsiferous		
	Pp	Plympton Formation	690	210	Chert nodules abundant	Hose and Repenning, 1959;	
	Pk	Kaibab Limestone	480-600	146-180	Yellow sandstone Gypsum	Hose, 1965b	
	Pa	Arcturus Formation	2,700+	820+	Limy dolomite		
PERMIAN	IPMe	Ely Limestone	1,850- 2,000	560-610	Fusulinids common Chert & silicified fossils common		
	Mc	Chairman Formation	Jensen Member Willow Gap-La Member Camp Canyon Member	100-190 352 1,050s	Basal beds chertone Marine fossils abundant This to north	Sadlick, 1965; Webster and others, 1984; Sandberg and others, 1980	
MISSISSIPPIAN	Mj	Joana Limestone	200-390	60-118	Phosphatic beds at base This to north	Goebel, 1991	
	MDp	Pilot Shale	830	250	Conodonts common	Sandberg and others, 1980, 1988	
DEVONIAN	Dg	Gulmette Formation	2,600	793	Brachiopods and conodonts at top "Spighen" and "castiflow" stromatoporoids common		
	Ds	Simonson Dolomite	660s	200s	Basal massive solution breccia Dark gray with silice fossils Barely light gray dolomite with floating brown quartz sand grains in upper part	Hose, 1966; Hintze, 1974b	
	Dsy	Sevy Dolomite	1,300- 1,600	400-488			
	DS	Laketown Dolomite	920-1,100	280-335	Pentamerus (brachiopod) Strophomena (cecal)	Redge and Sheehan, 1980a,b; this bulletin	
SILURIAN	Oes	Ely Springs Dolomite	552-620	168-189	Orthis (brachiopod) Eofletcheria (cecal)		
	Oew	Eureka Quartzite Crystal Peak Dolomite Watson Ranch Quartzite	450 90 200	137 27 60	Ostracodes Orthis (brachiopod)	Hintze, 1973a, 1974a, c; Hintze and others, 1988;	
	Opu	Lehman Formation Kamosh Shale Juab Limestone Wah Wah Limestone	200 550 160 250	60 167 49 76	Pendocystele (trilobite) Triopocera (trilobite) Hustonia (trilobite) Heterofurcata conglomerate Leisostium (trilobite)	Forsy and Drosar, 1996	
	Of	Pogonip Group	Fillmore Formation	1,800	550	Symphysurium (trilobite)	
	Oh	House Limestone	500	152	Mistissinios (trilobite)		
	Ocn	Notch Peak Fin	Lava Dam Member Red Tops Member Hellmutha Member	350 130 1,200	107 37 366	Mistissinios (trilobite) Stromatolites Heteroceras (gastropod)	

Diagram is schematic - no fixed scale. Primary Gold-Hosting Stenographic Unit at Kings Canyon

- Eastern Basin and Range Province
- Confusion Range
- Sedimentary rock-hosted, Carlin-type gold and silver deposit
- Inferred historical gold resource of 6,800,000 tons at a grade of 0.03 oz/ton gold (204,000 oz)

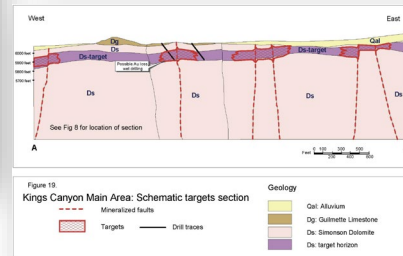
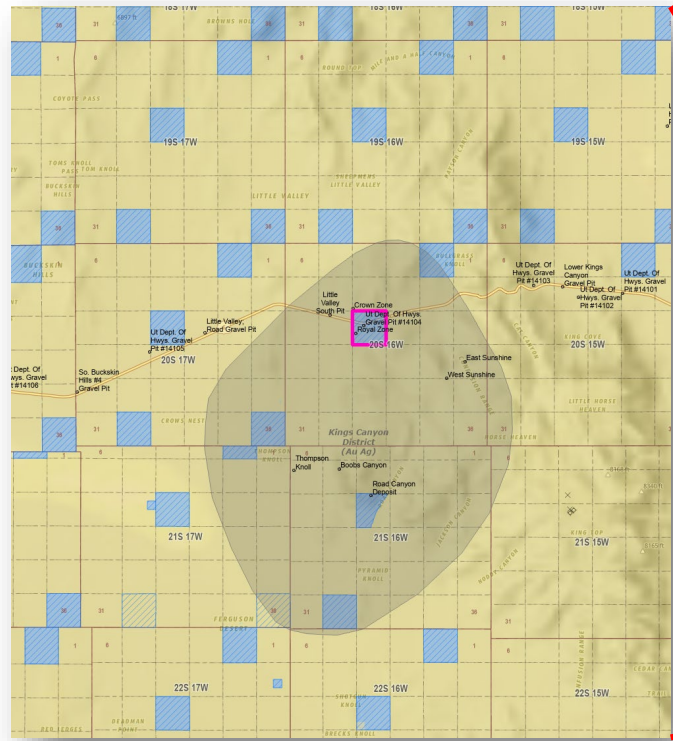


Figure 2
Kings Canyon Main Area: Schematic targets section

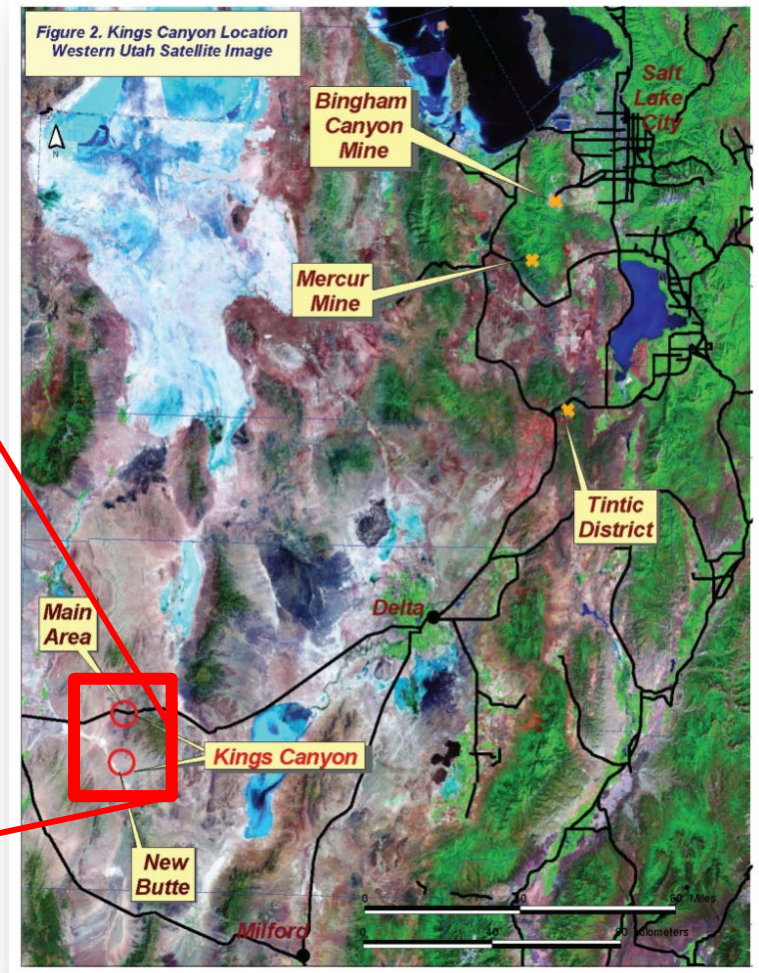
Kings Canyon (Au, Ag) OBA

T.20S., R.16W., Section 16, SLB&M



Acres: 640

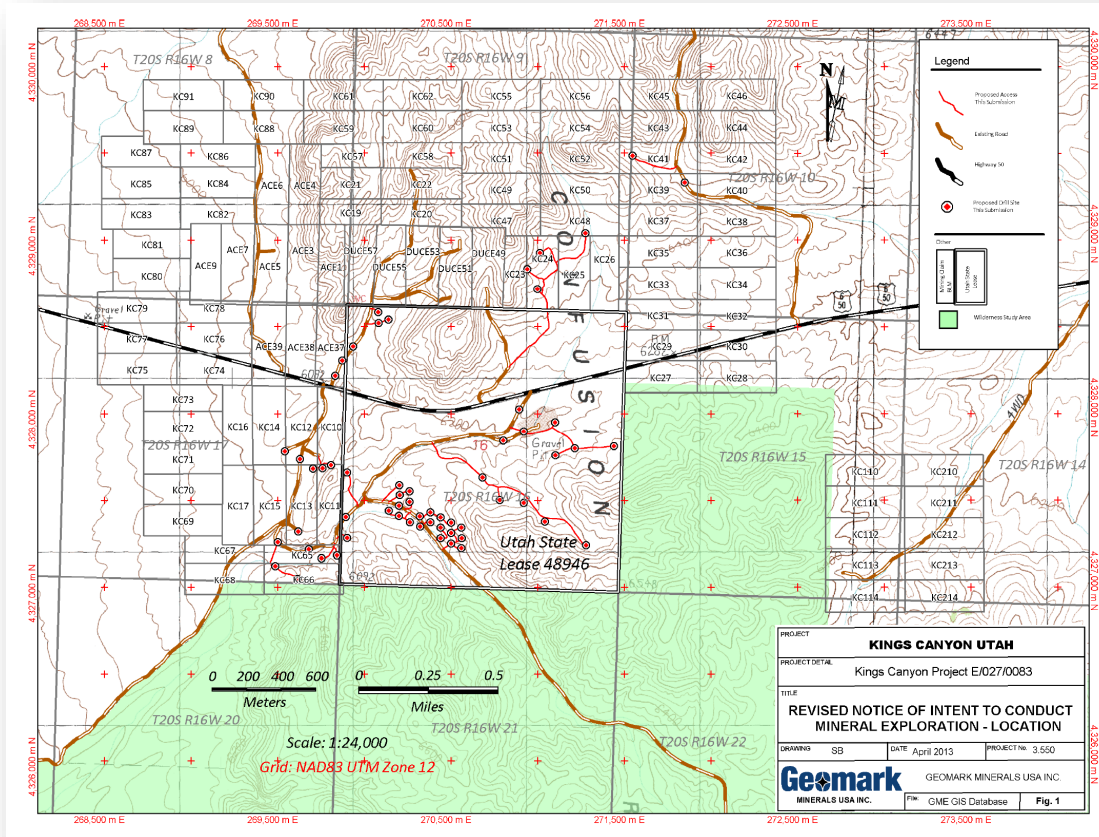
Beneficiary: Schools (100%)



Kings Canyon (Au, Ag) OBA

History

- **July 2002 – June 2012**
 - Genesis Gold Corp.
 - (2006) NI 43-101 Report
- **June 2012 – June 2022**
 - Geomark Minerals USA Inc.
 - (2013) 23 drill holes in Section 16
- **June 2022**
 - ML 48946 Expires
- **November 2023**
 - OBA Proposal
 - ML 54418-OBA



Kings Canyon (Au, Ag) OBA Proposal

- **3-Year Work Commitment**

- Regional sampling
- Geophysics
- Updated NI 43-101 Technical Report**
- New drilling program to test Crown/Royal

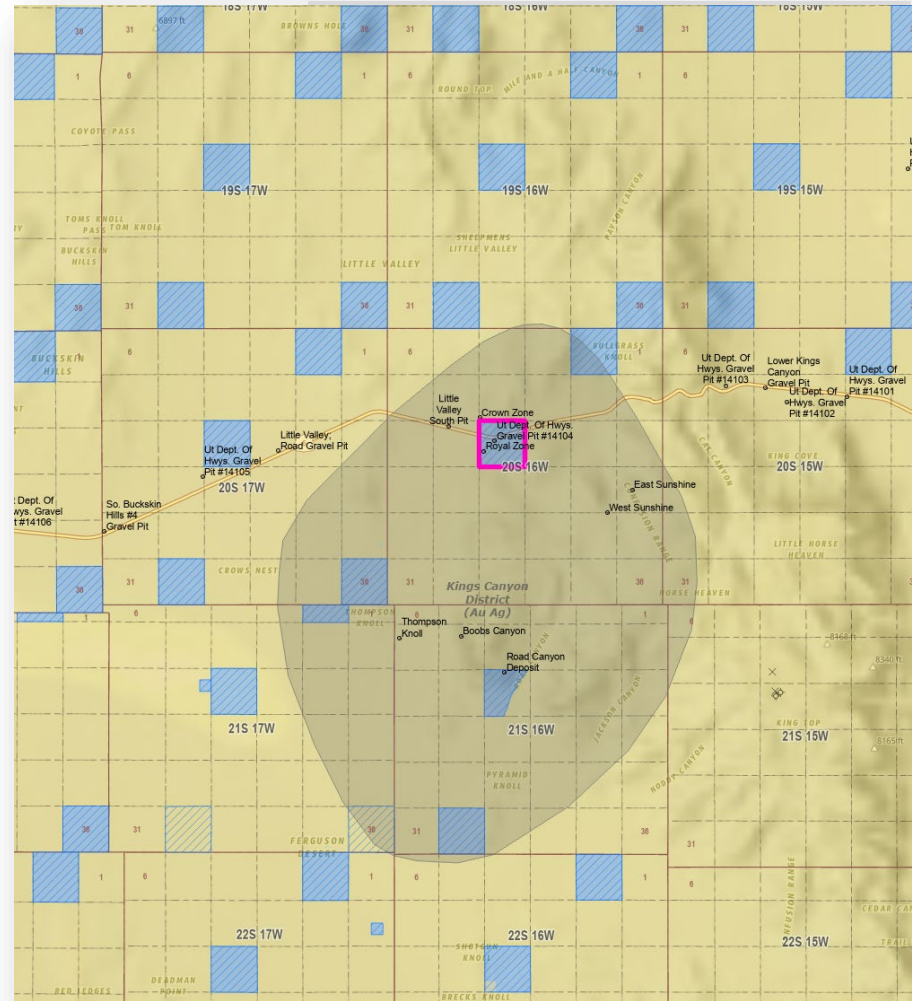
- **Bonus Payment**

- \$10,000.00

- **\$2.50/acre annual rental**

- **10-Year Lease Term**

- **4% Royalty**



Questions?

Thank You

Tyler Wiseman – Lease Manager / Geoscientist

