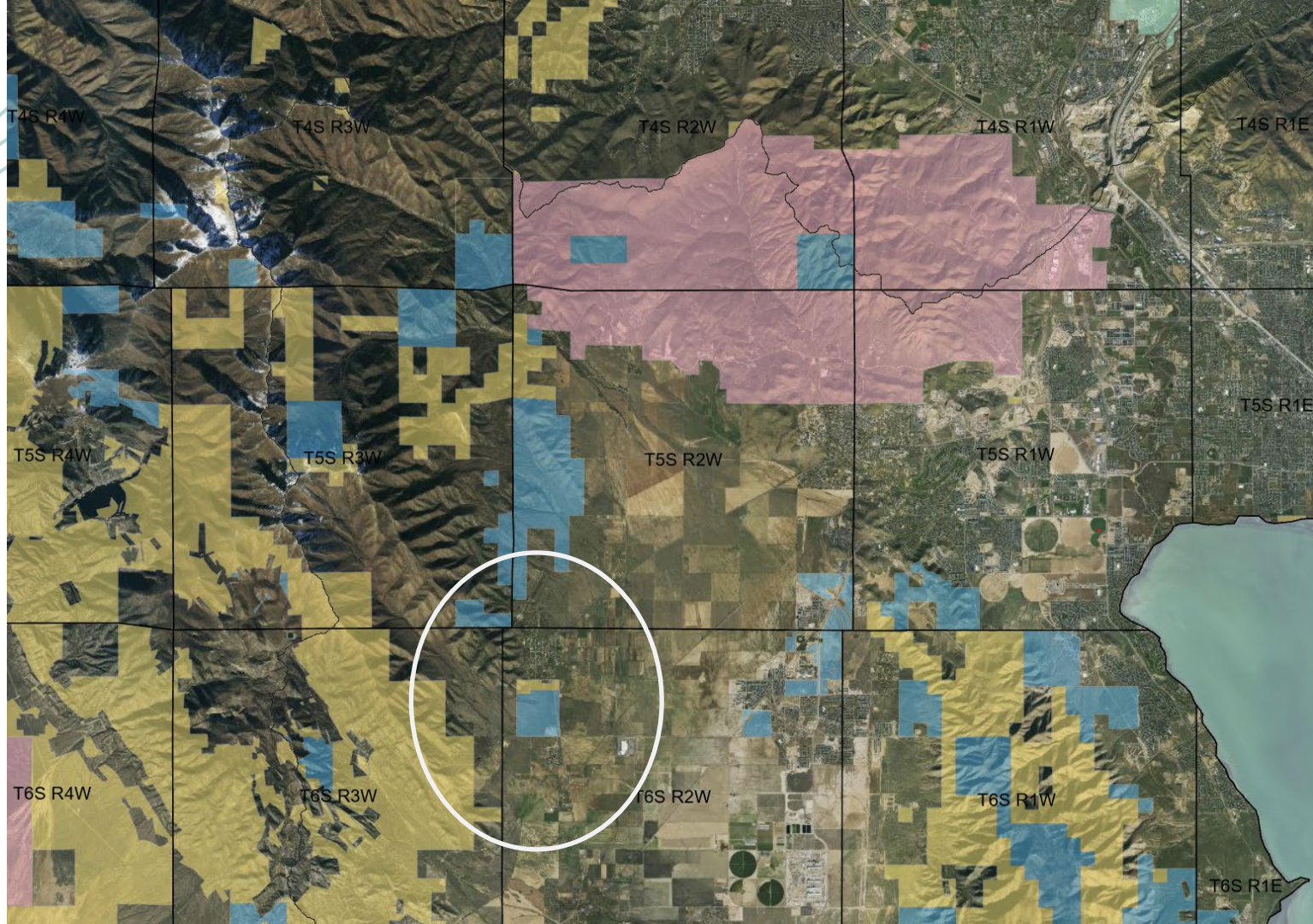


Cedar Fort Access Road

Development Dedication / Easement







Cedar Fort Road Easement

- Land Designated for Development
- 0.464 acres Road Footprint
- Improved access for Neighbors and TLA
- Temporary Easement
- Road to be Dedicated to Town of Cedar Fort

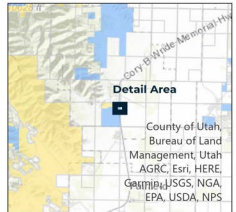
■ Development Easement No. 2415 - 0.46 Acres

Land Ownership and Administration

■ Bureau of Land Management

■ Private

■ State Trust Lands



Data represented on this map is for REFERENCE USE ONLY and is not suitable for legal, engineering, or surveying purposes. Users of this information should review or consult the primary data and information sources to ascertain the usability of the information. The Trust Lands Administration provides this data in good faith and shall in no event be liable for any incorrect results, or any special, indirect or consequential damages to any party arising out of or in connection with the use or the inability to use the data herein. Land parcels, base boundaries and associated Trust Lands Administration data layers may have been adjusted to allow for visual fit. The Surface Ownership Land Status data (if present) are maintained by the Trust Lands Administration to reflect current trust lands status and surface ownership. Lakes, rivers, streams, highways, roads, county and state boundaries are distributed by the Utah Geospatial Resource Center and/or other sources as specified. Contour lines (if present) were generated from USGS 30 meter DEM. Please Note: While the Trust Lands Administration seeks to verify data for accuracy and content, discrepancies may exist within the data. Acquiring the most updated Trust Lands Administration ownership GIS data may require contacting the GIS staff directly 801-538-3300 or TLA-GIS@utah.gov. The Trust Lands Administration GIS department welcomes your comments and concerns regarding the data and will attempt to resolve issues as they are brought to our attention. Produced January 25, 2024 - latest data.

Thank You For Your Consideration.

Questions/Comments?