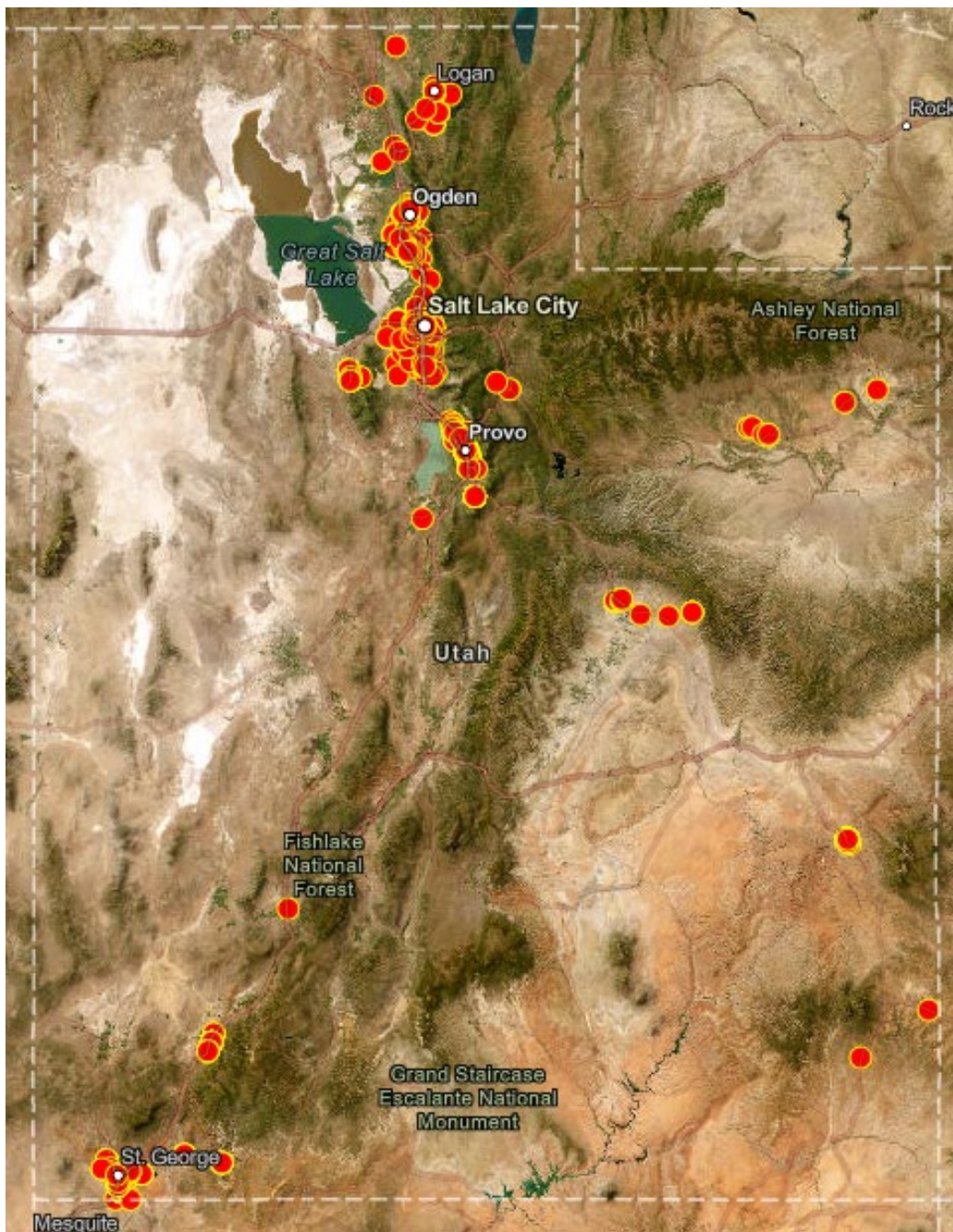
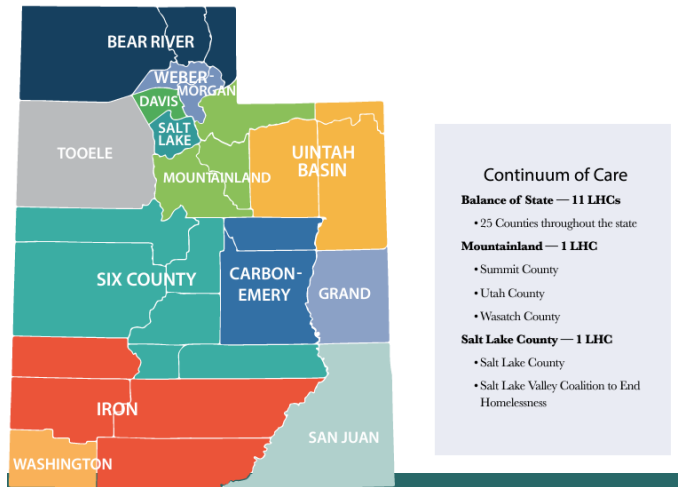
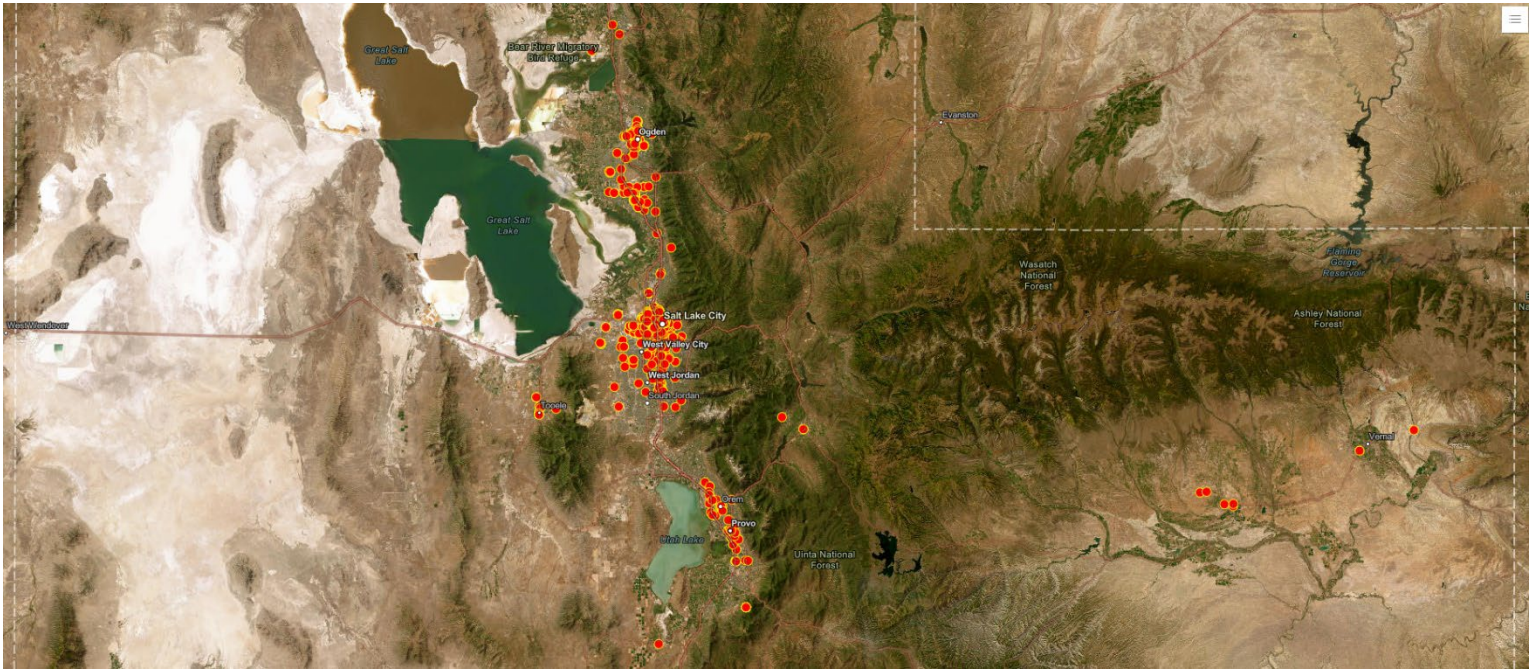


2024 Statewide Point in Time (PIT) Count For the Night of January 25, 2024

- Local Homeless Council (LHC) coordinated effort that took place the mornings of the January 25-27.
- Six County (e.g. Richfield, etc.) LHC did not use the mobile app to enter surveys or observations.
- Surveys collected on paper do not show on the heat map and will be entered by the Office of Homeless Services (OHS) when received. When entered they will show in the county, but not exact location.
- When not zoomed in, dots may represent multiple surveys or observations.
- Data clean up and deduplication will take place over the next couple of months by OHS.
- Final data will be released in the spring.



Wasatch Front



Southern Utah

