

Spanish Fork Community Network

Your Hometown Provider



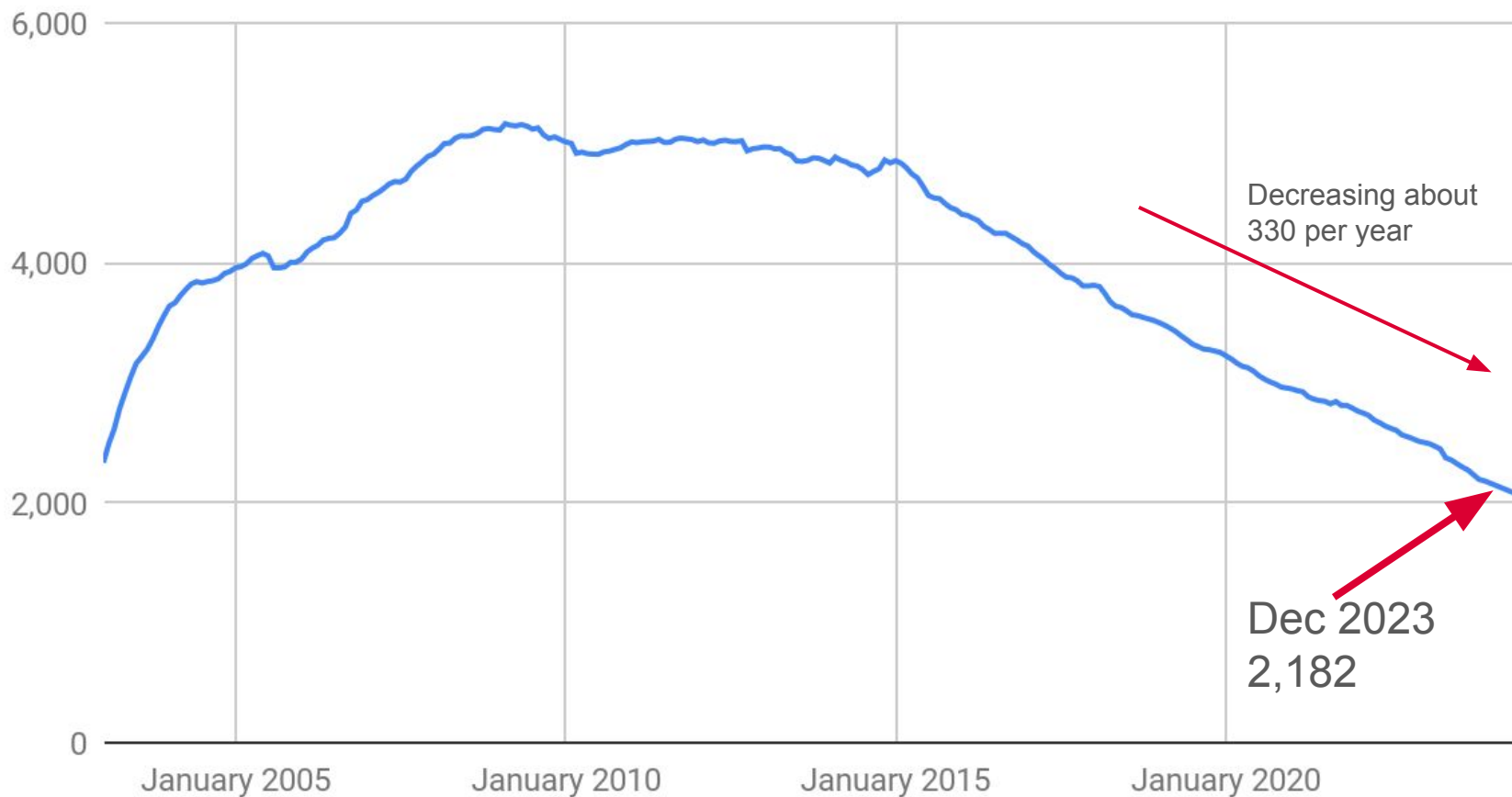
SFCN

CABLE TV SYSTEM

- Mostly a positive response to rolling out SFCNtv
 - 683 Subscribers so far (out of ~2,182)
- Still planning to shut down coax cable tv 10/7/24
 - We will start running crawlers soon
- Cable modems will likely take a bit longer
- Subscriber count continues to decline



of Cable Customers



SFCN

CABLE TV 2024 RATES

- These are preliminary numbers. We are still waiting for a few contracts to be finalized.
- Basic goes from \$45.30 to at least \$54.59
 - Still waiting on Bonneville retrans completion (5,118,119)
 - Huge increases in Sinclair (2,3,100,149,150,151,152), Nexstar (4,112,113,115,12,101,114,156), Scripps (13,140,141 and now 10 - Utah 16 - Sports)
- Expanded goes from \$121.79 to at least \$123.84
- Super Digital goes from \$138.24 to ??\$136.47?? (maybe)
 - Paramount bought Viacom and fixed Nick Jr. pricing
- Full Package goes from \$172.25 to ??\$170.48?? (maybe)



The Rest

NBCU

130-Telemundo, 131-Telexitos

Turner

6-TBS

Scripps

10-Utah 16
13-Fox
140-Antenna TV
141-Stadium

Bonneville

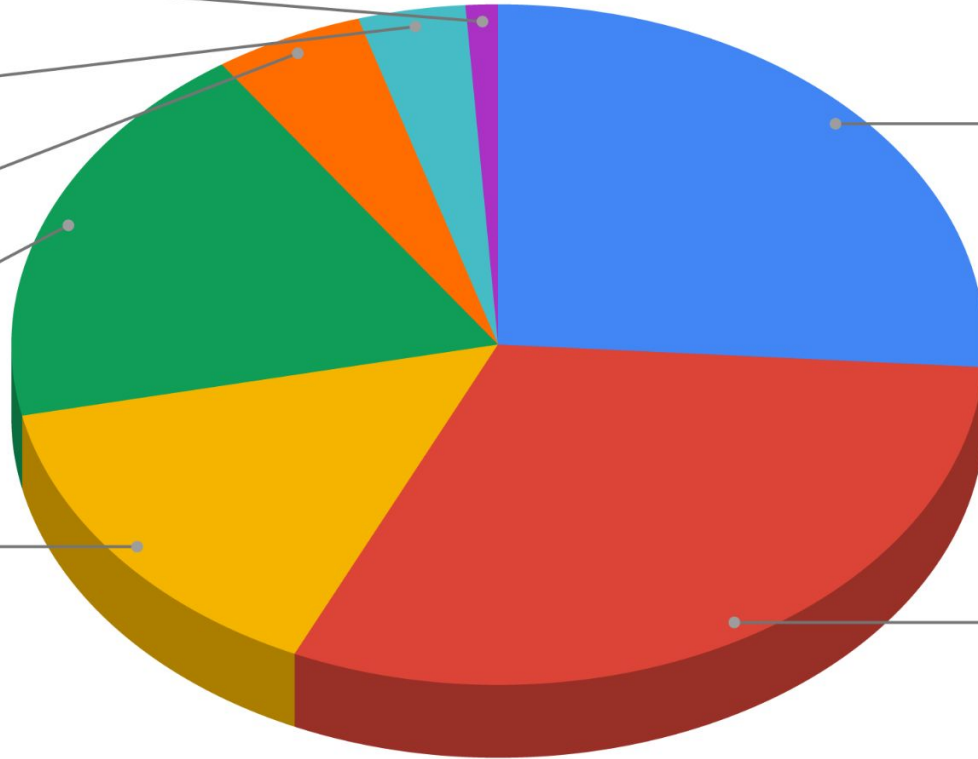
5 - KSL (NBC)
118 - This TV
119 - Cozi TV

Sinclair

2 - CBS (KUTV)
3 - KJZZ
100 - KMYU
149 - KJZZ Comet
150 - KJZZ TBD
151 - KJZZ Charge!
152 - KJZZ DABL

Nexstar

4 - ABC (KTVX)
112 - MeTV (KTVX)
113 - Laff (KTVX)
115 - H&I (KTVX)
12 - CW (KUCW)
101 - Movies! (KUCW)
114 - CourtTV (KUCW)
156 - Grit (KUCW)



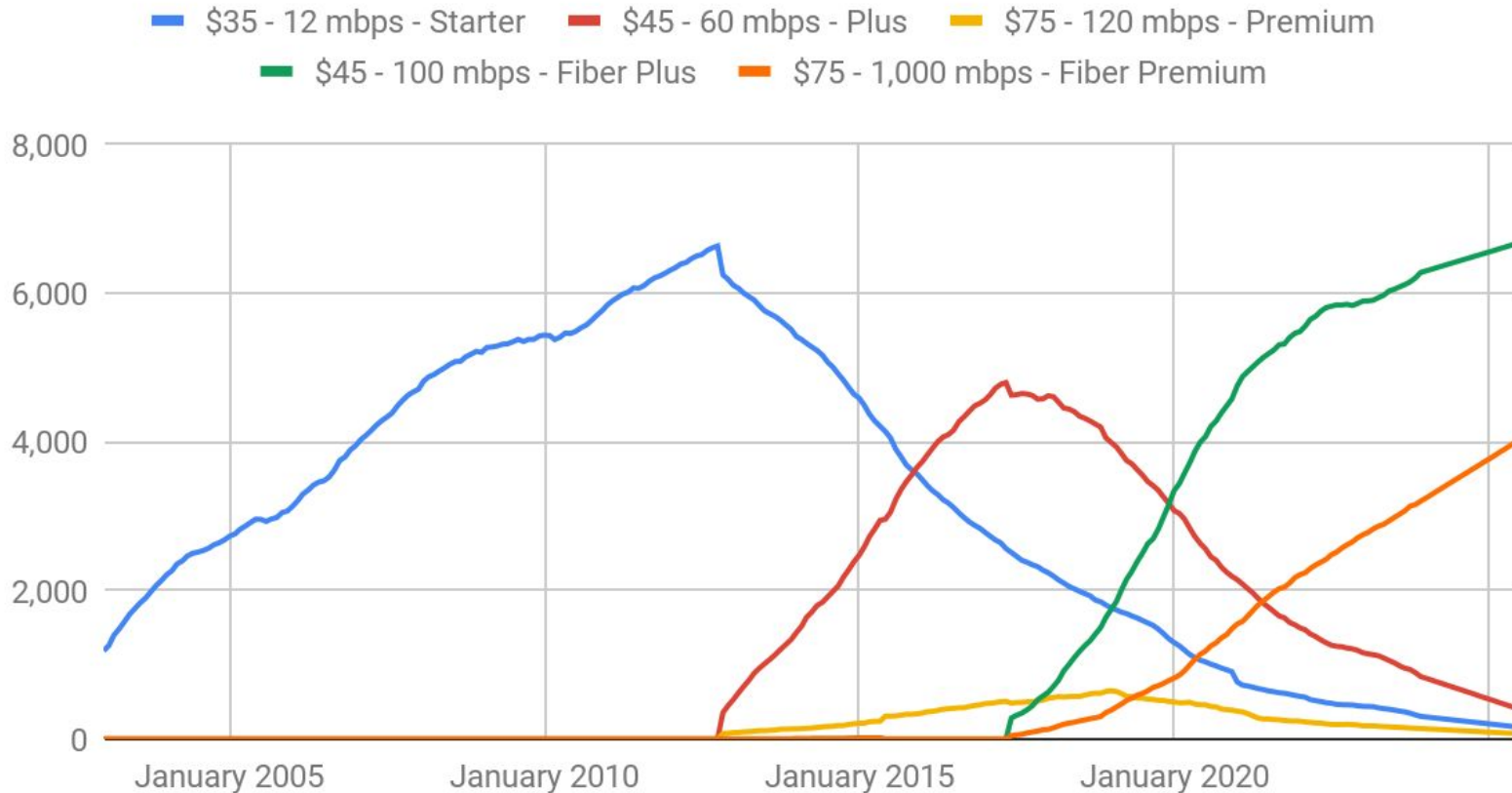
SFCN

INTERNET

- Currently about 11,350 internet subscribers
 - Plume managed WiFi has been amazingly successful
 - Salem and Mapleton continue to deploy it as well
 - Mapleton - 133
 - Salem - 314
 - SFCN - 1,601
 - Total - 2,048



Residential Internet Customer Types



SFCN INTERNET

- Currently about 11,350 internet subscribers
- 106 active nodes with #107 being configured as we speak



Corewei: 1/7/0/0 100G to Cogent



		last	min	avg	max
■ 1/7/0/0 HC In	[avg]	22.27 Gbps	8.39 Gbps	28.4 Gbps	47.83 Gbps
■ 1/7/0/0 Out	[avg]	7.38 Gbps	1.61 Gbps	4.43 Gbps	11.17 Gbps

Corewei: 200G to Salem



		last	min	avg	max
New Eth-Trunk15 In	[avg]	346.19 Mbps	126.43 Mbps	444.62 Mbps	1.42 Gbps
New Eth-Trunk15 Out	[avg]	2.72 Gbps	817.27 Mbps	3.89 Gbps	7.41 Gbps

SFCN INTERNET

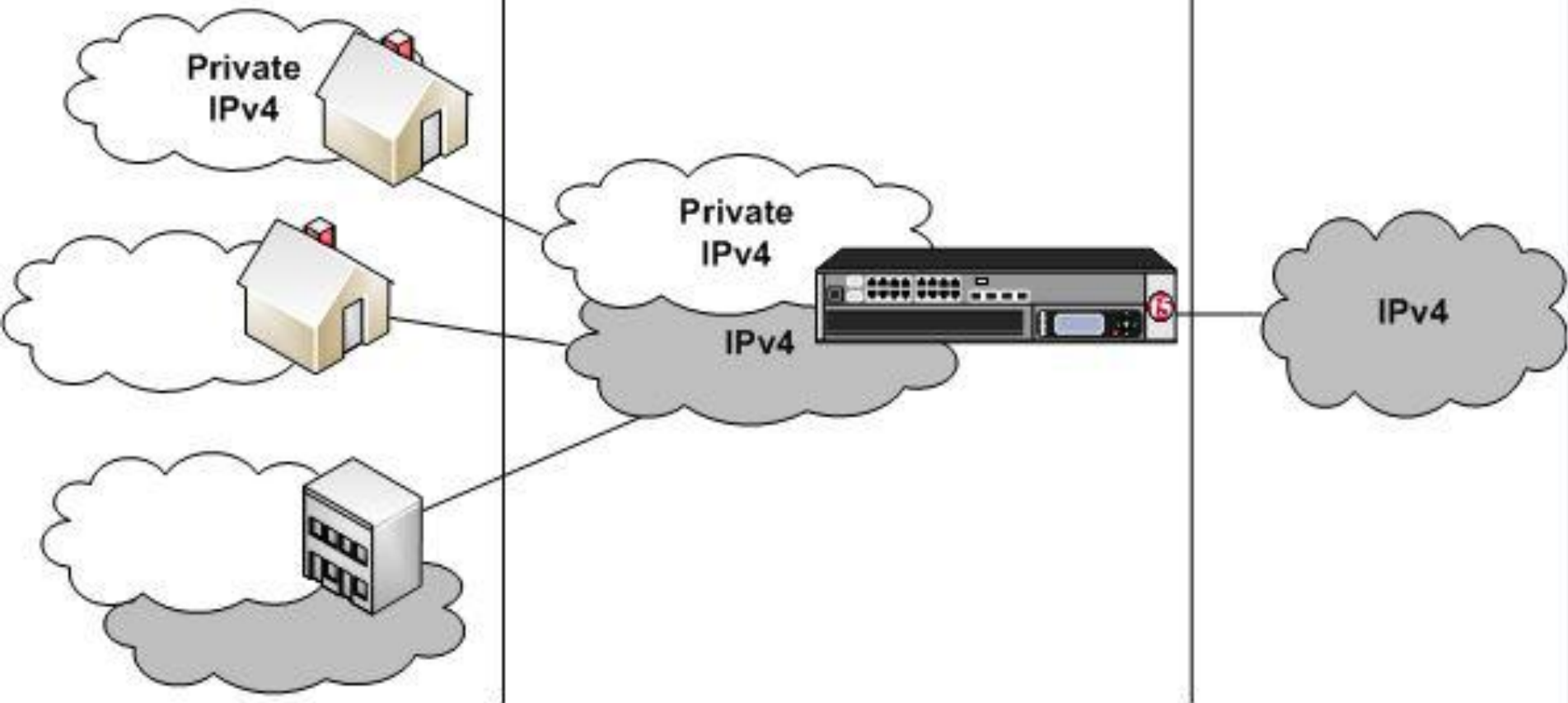
- Currently about 11,350 internet subscribers
- 106 active nodes with #107 being configured as we speak
- About 1,400 cable modem customers left to move to fiber
 - IP addresses are becoming a bigger concern
 - There are no more IPv4 addresses available unless we lease them from another provider for \$\$\$
 - Let's talk NAT, specifically Large Scale NAT (LSN)



Subscribers

Provider

Internet



SFCN

INTERNET

- A10 LSN system with supporting DHCP and Syslog servers will be in the neighborhood of \$100K
 - We have a reliable quote but still have an open RFP to close before we pull the trigger
- We will postpone our Corewei replacement capital project until FY25 and use those funds allocated for FY24 for the LSN system instead
- It's time to have our first full-time CSR



SFCN

SFCN GLOBAL HEADQUARTERS AKA: The Beck Building

- Substantial completion is currently scheduled for 3/31/24
- Furniture should be arriving the last week in March
- We plan to start installing our equipment in April with a grand opening around May 1st
- You are all invited

















SFCN

SFCN Summary of Requests

- Communications conduits on all projects
- Remind the public that we don't set cable tv rates, but we can sure teach them how to use the input button
- Move 1 part time CSR to full time



Q & A

Spanish Fork Community Network

Your Hometown Provider

