



SPANISH FORK
PARKS & RECREATION





New Employees



Alberto Fonseca
Parks
Maintenance Worker



Bridger Hall
Parks
Maintenance Worker



Jace Jones
Parks
Maintenance Worker



Kaden Robertson
Project
Leadworker



David Swalberg
Project
Leadworker



Erica DeMeester
Health & Wellness
Coordinator



Jenni Peterson
Special Events
Coordinator





Demo's
on
South
Main





Electric Park
Sod Laying Party



Sandbaggers





Sports Park Restroom Remodel



Sports Park Playground

Sports Park Batting Cages





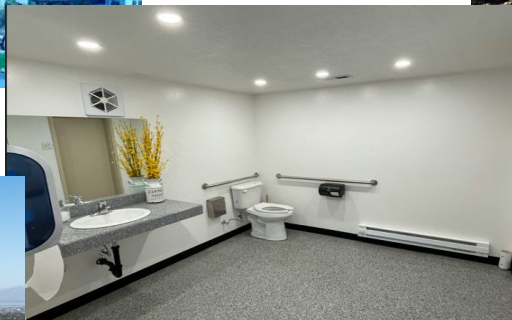
Power Corridor



Disc Golf Restroom



Super Sporting Clay Ribbon Cutting



Gun Club Restroom Remodel



Fairgrounds Parking Lot



Arts Council



Youth
Arts
Festival



URPA
Innovation
of the
Year



Wings & Wheels



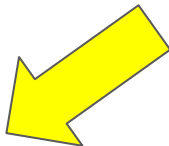
CANYON VIEW PARK

3300 East Powerhouse Road

CVP Rental Guidelines

Reserve a Pavilion

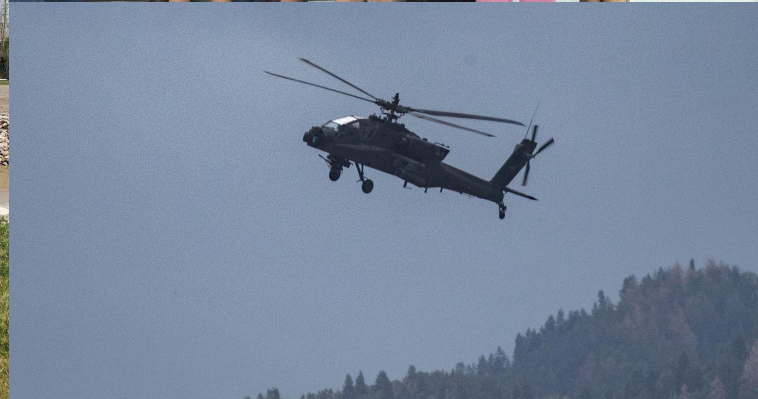
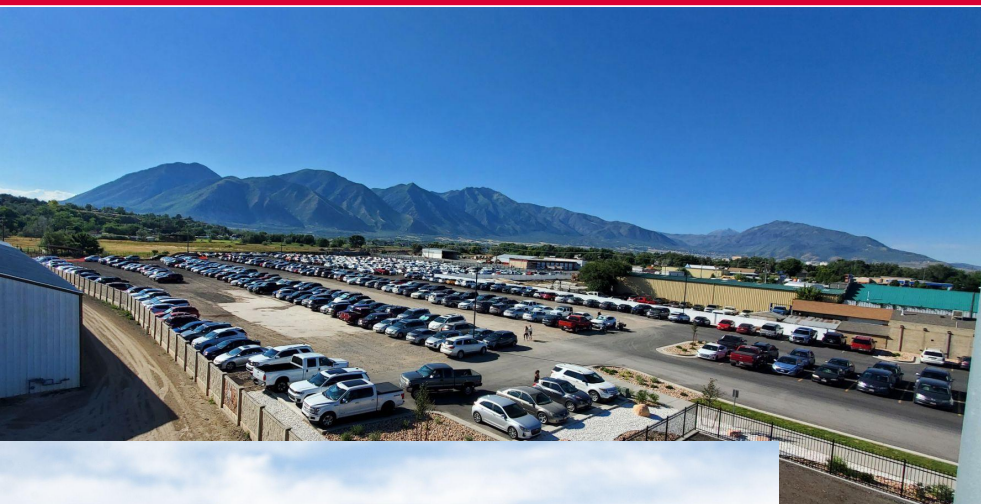
Jaycee's Pavilion



Pavilion Rentals now online



Jaycees Pavilion has 10 tables, for a max capacity of 100 persons.



Health & Wellness



Senior Center

Best Board!
Best Cooks!

Seniors still
believe in Santa
and the Grinch

Who's the
Grinch?





It's Happening!



Recreation Center Construction Timeline



Recreation Center Bond Timing

February 6 - Parameters Resolution.

1. A required public hearing to be held at least 14 days later
2. We'll hold ours about 30 days later

March 5 - Hearing for the bond, includes commentary of a general obligation bond financing that did not receive approval

1. This unapproved general obligation bond language is required by statute
2. Adoption of an administrative new debt resolution



Recreation Center Manager

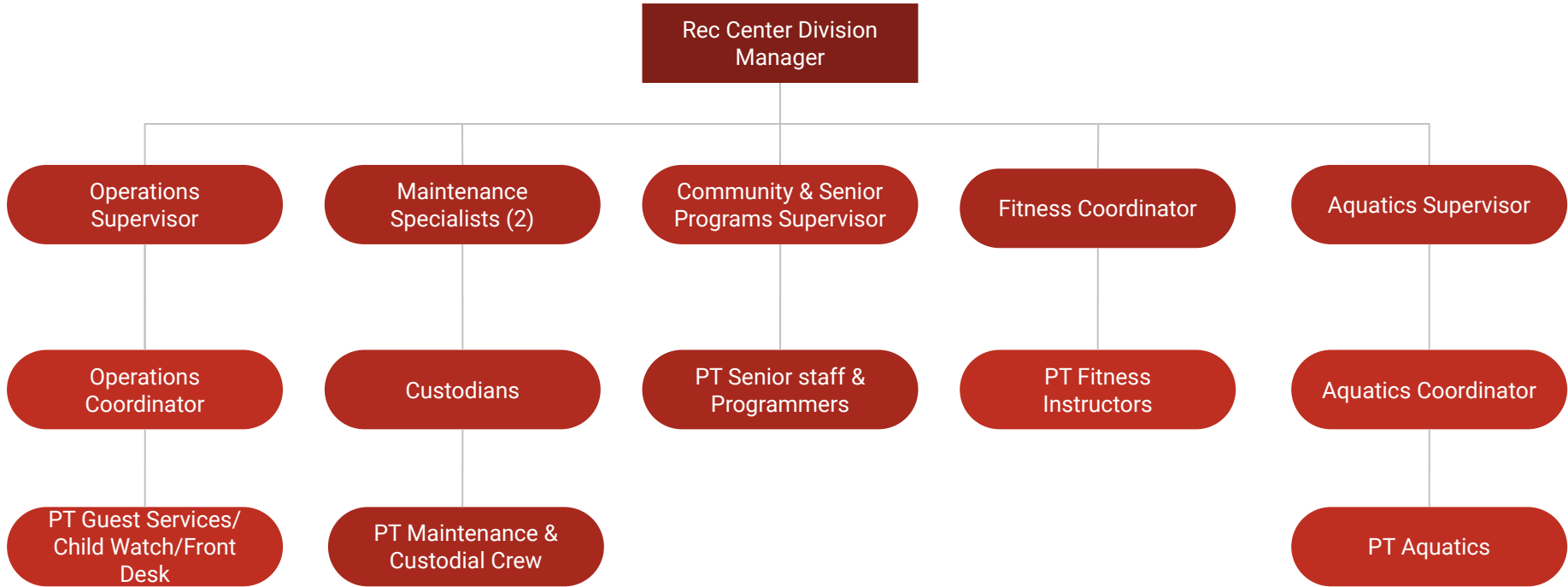
Proposing to Hire this position July 1, 2024

- Develop 1st year budget
- Purchase/write membership program
- Write policy, procedures, rules
- Build Rec Center website/marketing
- Develop job descriptions
- Bid and Order all equipment
- Develop Programs
- Membership Drive
- Hire & train remaining full time and part time staff
- Learn Senior operations & prepare for move



**It is time to begin implementing the details
of the Recreation Center operations**





SPANISH FORK

PRIDE & PROGRESS

July 2024

Hire Rec Center
Manager

June 2025

Aquatics
Supervisor &
Coordinator

June 2025

Hire Maintenance
Specialist (2)

June 2025

Operations
Coordinator (2)

June 2025

Fitness
Coordinator

June 2025

Custodian

**Beginning July 2025
300-400 Part Time
employees will need
to be Hired &
Trained**





Recreation Center Resident Membership & Fee Comparison

	Resident																							
	Individual Adult (18-59)				Youth (3-17)				Adult Couple				Senior Individual (60+)				Senior Couple				Family			
City	3-m	6-m	Annu.	Pay by Month	3-m	6-m	Annu.	Pay by Month	3-m	6-m	Annu.	Pay by Month	3-m	6-m	Annu.	Pay by Month	3-m	6-m	Annu.	Pay by Month	3-m	6-m	Annu.	Pay by Month
Provo	\$95	\$165	\$285	\$27	\$55	\$90	\$157	\$16	\$132	\$229	\$398	\$36	\$55	\$90	\$157	\$16	\$95	\$165	\$285	\$27	\$167	\$284	\$493	\$44
Orem			\$275	\$27			\$275	\$27			\$395	\$39			\$155	\$17			\$395	\$39			\$485	\$45
SV	\$95	\$160	\$280	\$26	\$60	\$90	\$150	\$15	\$130	\$220	\$380	\$34	\$60	\$90	\$150	\$15	\$95	\$160	\$270	\$25	\$160	\$270	\$475	\$43
AVE.	\$95	\$163	\$280	\$27	\$58	\$90	\$194	\$19	\$131	\$225	\$391	\$36	\$58	\$90	\$154	\$16	\$95	\$163	\$317	\$30	\$164	\$277	\$484	\$44

Goal is 15% of residents purchase a pass





Recreation Center Non-Resident Membership & Fee Comparison

	Non-Resident																							
	Individual Adult (18-59)				Youth (3-17)				Adult Couple				Senior Individual (60+)				Senior Couple				Family			
City	3-m	6-m	Annu.	Pay by Month	3-m	6-m	Annu.	Pay by Month	3-m	6-m	Annu.	Pay by Month	3-m	6-m	Annu.	Pay by Month	3-m	6-m	Annu.	Pay by Month	3-m	6-m	Annu.	Pay by Month
Provo	\$120	\$205	\$355	\$33	\$65	\$112	\$195	\$19	\$167	\$289	\$503	\$45	\$65	\$112	\$195	\$19	\$120	\$205	\$355	\$33	\$207	\$359	\$618	\$55
Orem			\$335	\$37			\$335	\$37			\$480	\$49			\$190	\$27			\$380	\$54			\$585	\$55
SV	\$120	\$205	\$360	\$33	\$75	\$115	\$190	\$19	\$165	\$285	\$495	\$44	\$75	\$115	\$190	\$19	\$120	\$205	\$350	\$32	\$205	\$350	\$620	\$55
AVE.	\$120	\$205	\$357	\$34	\$70	\$114	\$240	\$25	\$166	\$287	\$493	\$46	\$70	\$114	\$192	\$22	\$120	\$205	\$362	\$40	\$206	\$355	\$608	\$55





Recreation Center Corporate Membership

Corporate Provo Comp.
Tier 1 25 + employees purchase membership- 25% off resident rates
Tier 2 10 + employees purchase membership- 15% off resident rates
Tier 3 5 + employees purchase membership- 10% off resident or non-resident rates





**Scholarship Assistance Fund:
Help provide Passes or Memberships for those in Need**



SPANISH FORK

PRIDE & PROGRESS

A Recreation Center Groundbreaking Must See





End of Thursday Presentation

