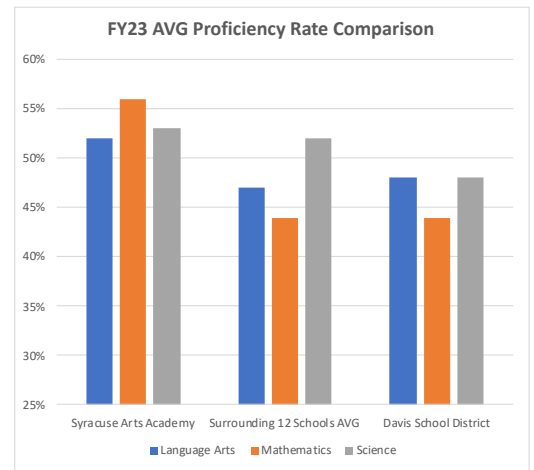
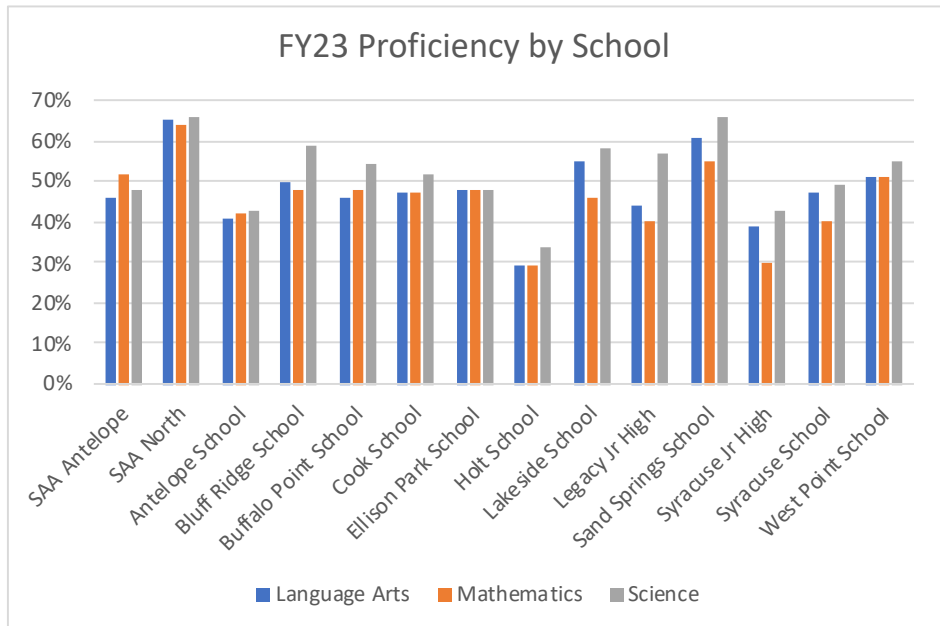


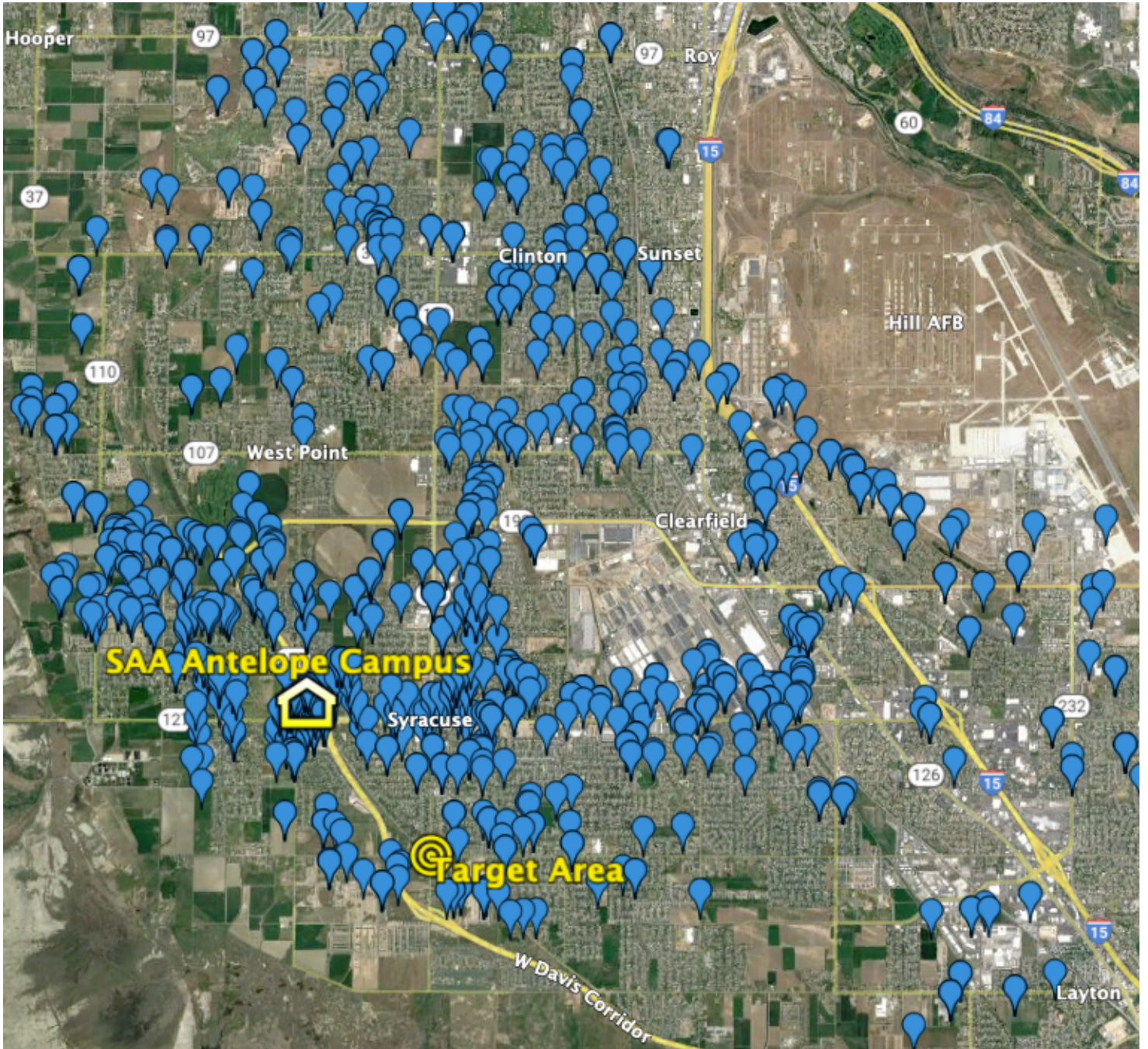
FY23 Proficiency Data

FY23 Student Proficiency BY SCHOOL			
	Language Arts	Mathematics	Science
SAA Antelope	46%	52%	48%
SAA North	65%	64%	66%
Antelope School	41%	42%	43%
Bluff Ridge School	50%	48%	59%
Buffalo Point School	46%	48%	54%
Cook School	47%	47%	52%
Ellison Park School	48%	48%	48%
Holt School	29%	29%	34%
Lakeside School	55%	46%	58%
Legacy Jr High	44%	40%	57%
Sand Springs School	61%	55%	66%
Syracuse Jr High	39%	30%	43%
Syracuse School	47%	40%	49%
West Point School	51%	51%	55%

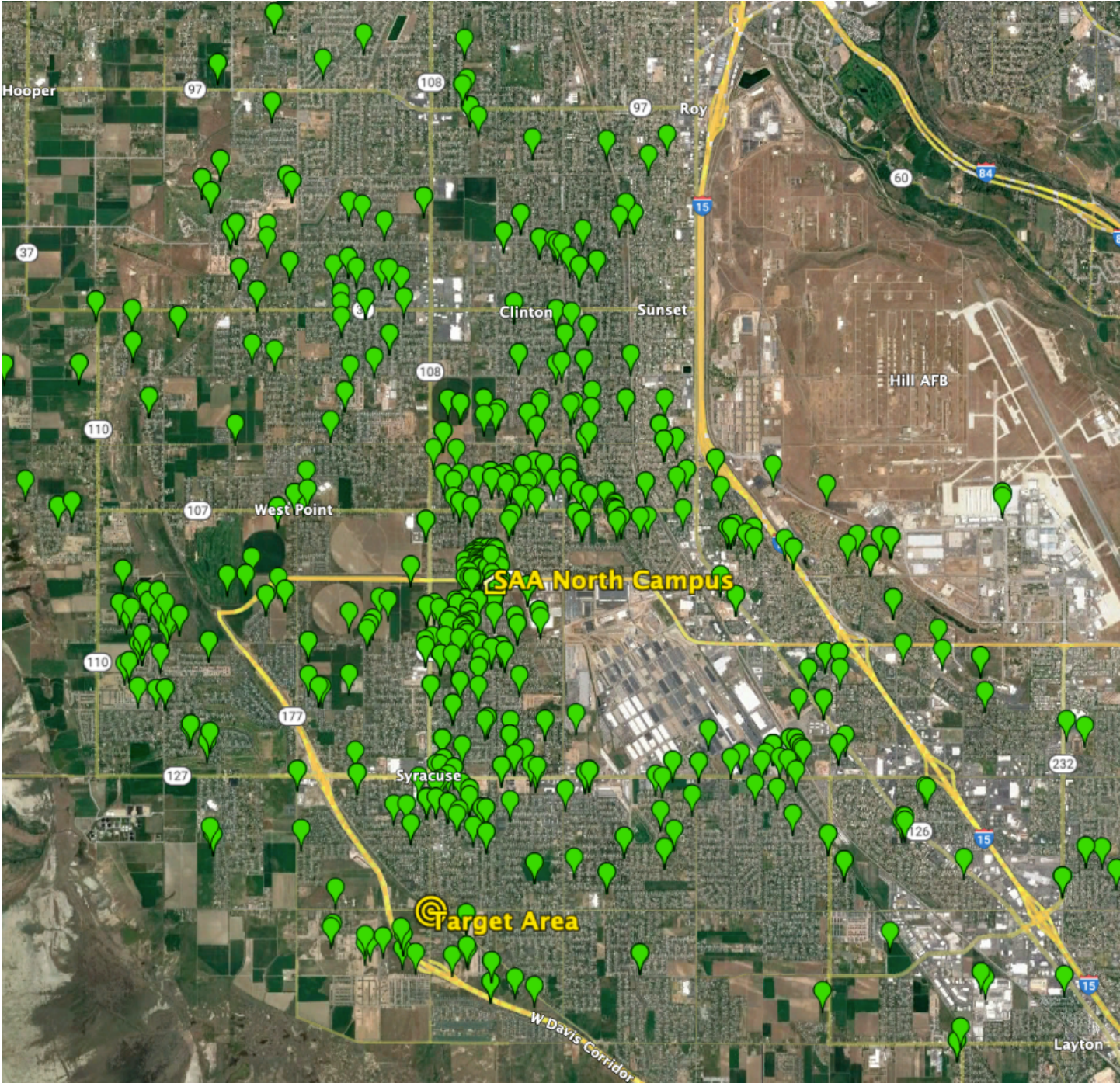
FY23 Student Proficiency AVERAGES			
	Language Arts	Mathematics	Science
Syracuse Arts Academy	52%	56%	53%
Surrounding 12 Schools AVG	47%	44%	52%
Davis School District	48%	44%	48%



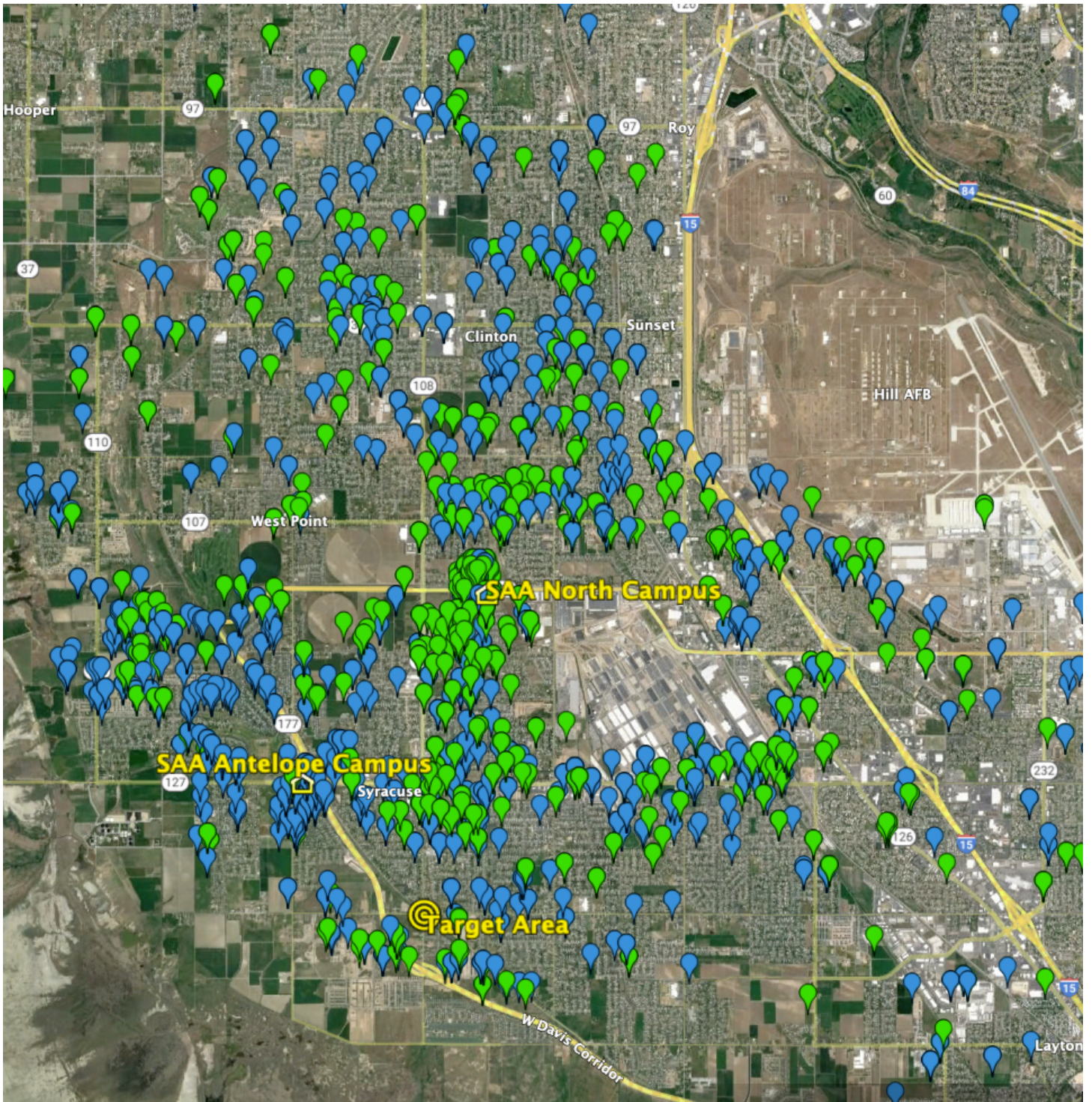
Antelope Campus Enrollment Map



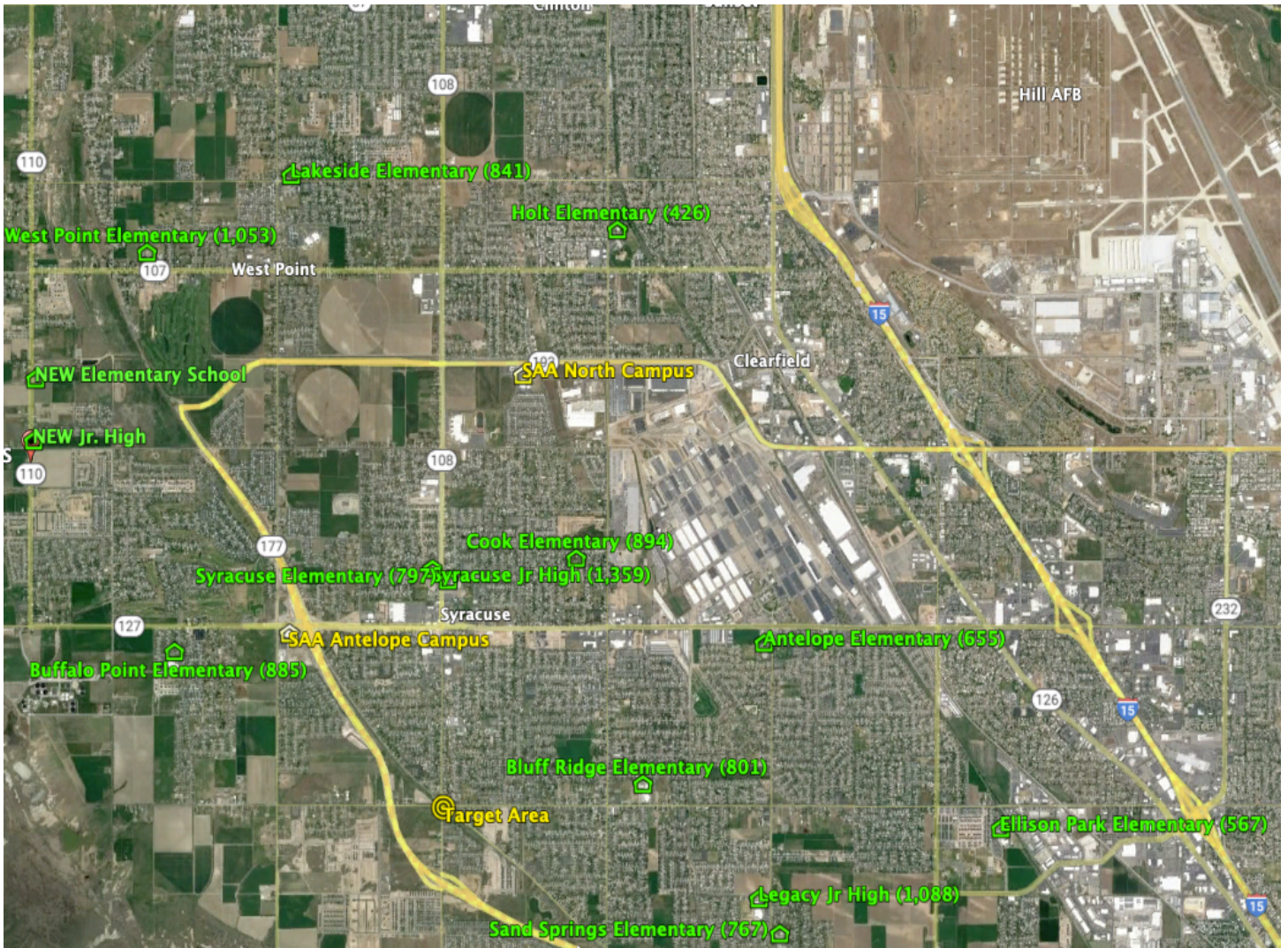
North Campus Enrollment Map



Antelope & North Campus Combined Enrollment Map



Surrounding Schools Map



Quick Facts

SAA Enrollment History

	Enrollment Capacity	Oct-23	Oct-22	Oct-21	Oct-20	Oct-19
Antelope Campus	1025	1002	1006	1011	1034	1045
North Campus	728	738	734	733	735	748
LEA	1753	1740	1740	1744	1769	1793

FY23 Student Proficiency AVERAGES

	LA	Math	Science
Syracuse Arts Academy	52%	56%	53%
Surrounding 12 Schools AVG	47%	44%	52%
Davis School District	48%	44%	48%

SAA Charter Approval History/Timeline:

- 2005 – Original charter approved
- 2006 – SAA Antelope opens (K-6, 525 students)
- 2008 – Approved to expand to grades 7-9 and increased capacity to 1,025
- 2014 – North Elementary Campus satellite application approved
- 2015 – North Elementary Campus opens
- 2023 – New satellite application submitted

Student Retention Rate: 91% (FY22)

Enrollment Rate: 99% capacity

Financial Audit Findings: None

Unrestricted Days Cash: 200 Days (FY23 Audit)

Facility Information:

- SAA Antelope Elementary: 43,342 sq ft
- SAA Antelope Jr. High: 60,536 sq ft
- SAA North Elementary: 60,801 sq ft

Target Area Crossroads: 2700 S. 2000 W., Syracuse

Satellite School Enrollment:

Satellite Grades: K-6

Satellite Max Enrollment: 756 Students

(~27 students per class, 4 classes per grade)

LEA Max Enrollment with Satellite: 2,509

Top 5 Largest Elementary Schools in DSD

West Point: 1,062 Students*

Bluff Ridge: 928 Students*

Buffalo Point: 890 Students*

Sunburst: 858 Students

Lakeside: 830 Students*

Top 5 Largest Jr High Schools in DSD

West Point Jr. High: 1,560 Students

Farmington Jr. High: 1,277 Students

Syracuse Jr. High: 1,255 Students*

Shoreline Jr. High: 1,178 Students

Legacy Jr. High: 1,090 Students*

(* Indicates school falls within Target Area)

Modular Classroom County by School (within Target Area):

Antelope Elementary: 7 Classrooms

Bluff Ridge Elementary: 8 Classrooms

Buffalo Point Elementary: 9 Classrooms

Cook Elementary: 7 Classrooms

Ellison Park Elementary: 4 Classrooms

Holt Elementary: 2 Classrooms

Lakeside Elementary: 7 Classrooms

Legacy Park Jr. High: 4 Classrooms

Sand Springs Elementary: 6 Classrooms

Syracuse Jr. High: 13 Classrooms

Syracuse Elementary: 7 Classrooms

West Point Elementary: 10 Classrooms

TOTAL: Surrounding 12 district schools have 84 modular classrooms.