

12/19

SKYRIDGE UPDATE

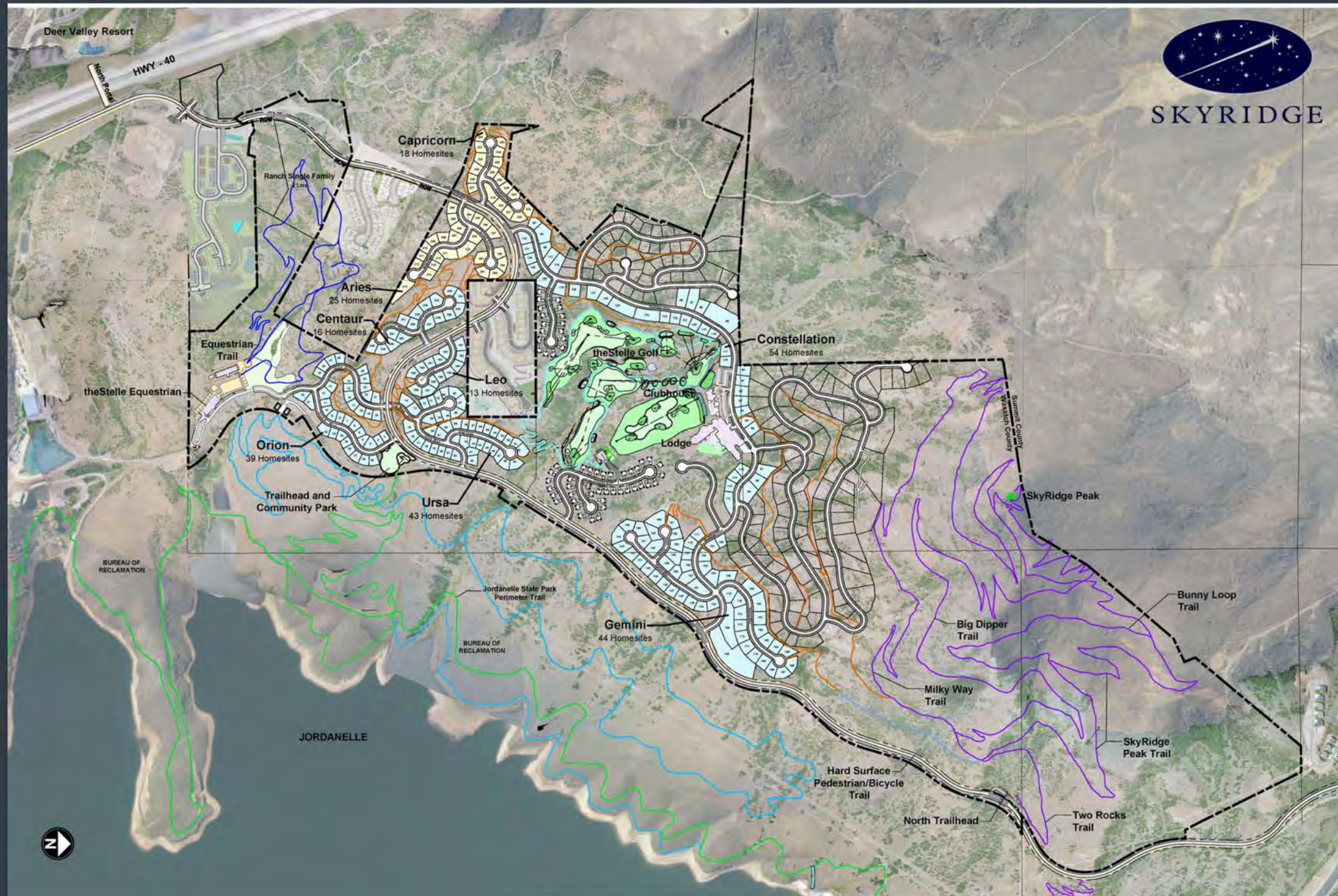
MIDA BOARD MEETING
DECEMBER 19TH, 2023



SKYRIDGE
MOUNTAIN COMMUNITY

www.skyridgeparkcity.com

SUBDIVISION CONSTRUCTION & SALES UPDATE



Subdivision Construction Update

- 8 Subdivisions in Blue Completed
- Sold 216/252 Finished Lots
- 18 Lots Available in Aries
- 16 Lots Available in Capricorn

2023 Sales Recap

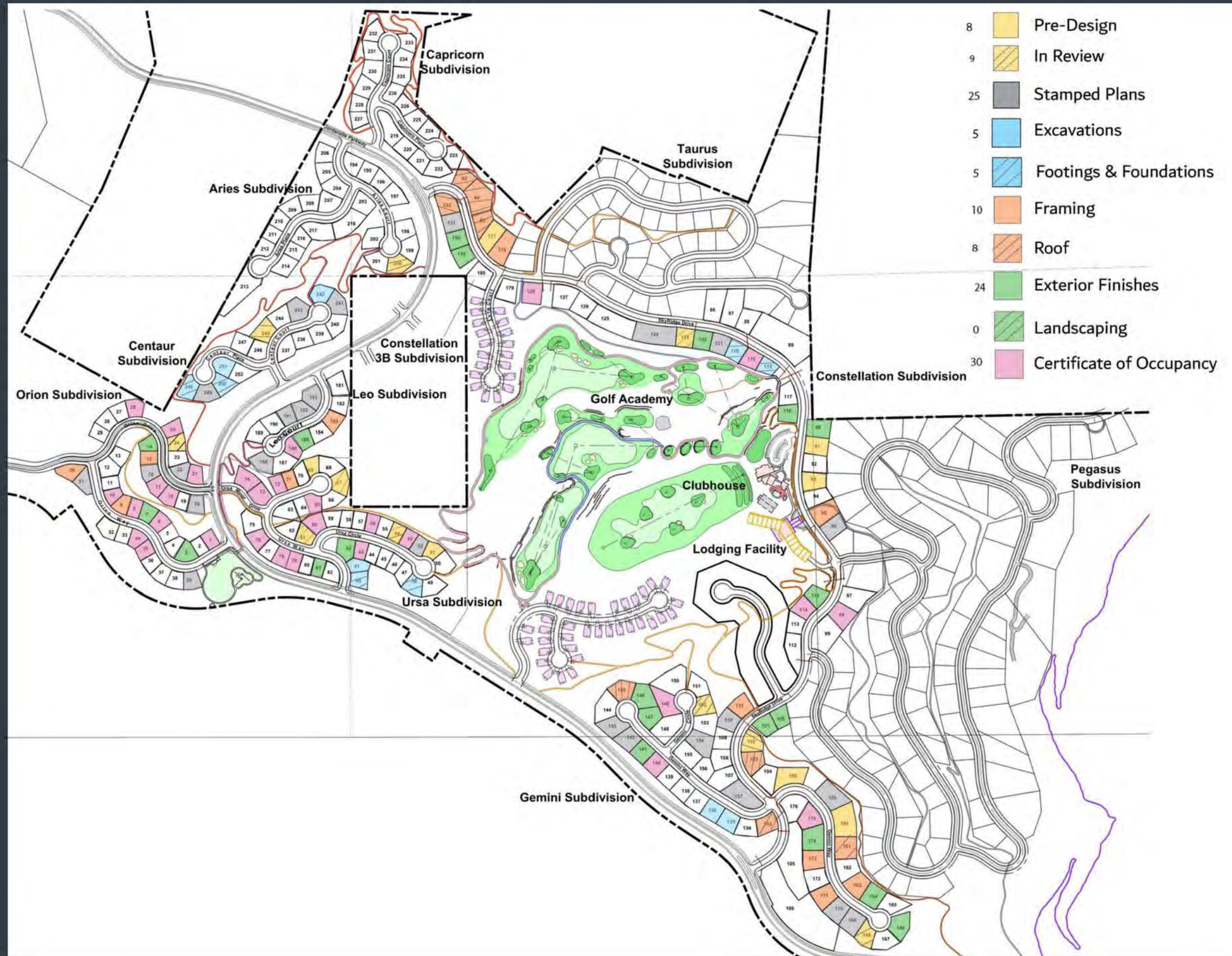
- 12 Lots Sold with Average Sales Price of \$817k
- 7 Homes Sold with Average Sales Price of \$3.2M - Average Price per Square Foot of \$753

Current Listings

- Homesites starting at \$700k
- Homes starting at \$3.5m



HOMEBUILDING UPDATE



2023 Homebuilding Recap

- 60% of Lots Sold have Homebuilding Activity
- 82 Homes Finished or Under Construction
- 42 Home Plans Approved or in Process
- 22 New Home Starts the Year

MIDA PID & THE STELLE RESORT UPDATE



EQUESTRIAN GROUNDBREAKING

MAY 24TH, 2023



EQUESTRIAN UPDATE



EQUESTRIAN RIDING ARENA & SITE CONSTRUCTION



THE STELLE EQUESTRIAN OVERVIEW



- 40 STALL BARN WITH PADDOCKS
- LARGE INDOOR / OUTDOOR ARENAS
- GRAZING PASTURE
- EUROPEAN WALKER & ROUND PEN
- TRAIL RIDES & LESSONS
- HORSE BOARDING & CARE
- MILITARY PROGRAMMING & MEANINGFUL DISCOUNTS

GOLF COURSE OVERVIEW



GOLF COURSE & DRIVING RANGE



CLUBHOUSE GROUNDBREAKING

OCTOBER 27, 2023



THE STELLE GOLF CLUBHOUSE



- THREE TOPGOLF SWING SUITE SIMULATOR LOUNGES
- LUXURY RETAIL & GOLF PRO SHOP
- ICONIC BAR & RESTAURANT
- GROCER CAFE
- 310 YARD DRIVING RANGE WITH TOPTRACER TECHNOLOGY
- 15 PRIVATE HITTING BAYS ON DRIVING RANGE
- PUTTING GREEN & PRACTICE AREA
- MILITARY PROGRAMING & MEANINGFUL DISCOUNTS



theStelle Lodge

PARK CITY

- BOUTIQUE MOUNTAIN MODERN LODGE
- PREFERRED HOTEL & RESORTS LUXURY COLLECTION
- 55 CONDOMINIUM UNITS
- 65 HOTEL ROOM KEYS
- FINE DINING RESTAURANT
- LUXURY SPA
- OUTFITTER
- ROOFTOP OBSERVATION DECK & BAR



*conceptual images

MIDA PID FACILITIES 2024 PLAN

EQUESTRIAN

- UNDER CONSTRUCTION
- PUBLIC OPENING – Q4 2024

GOLF COURSE

- UNDER CONSTRUCTION
- SOFT OPENING – Q3 2024
- PUBLIC OPENING – Q2 2025

CLUBHOUSE

- UNDER CONSTRUCTION
- 18-MONTH BUILD
- PUBLIC OPENING – Q2 2025

LODGE

- IN DESIGN WITH NEW OPERATOR
- FINAL SITE PLAN APPROVED Q2 2024
- BUILDING PERMIT ISSUED Q3 2024
- 24-MONTH BUILD
- OPENING BY YEAR END 2026

