

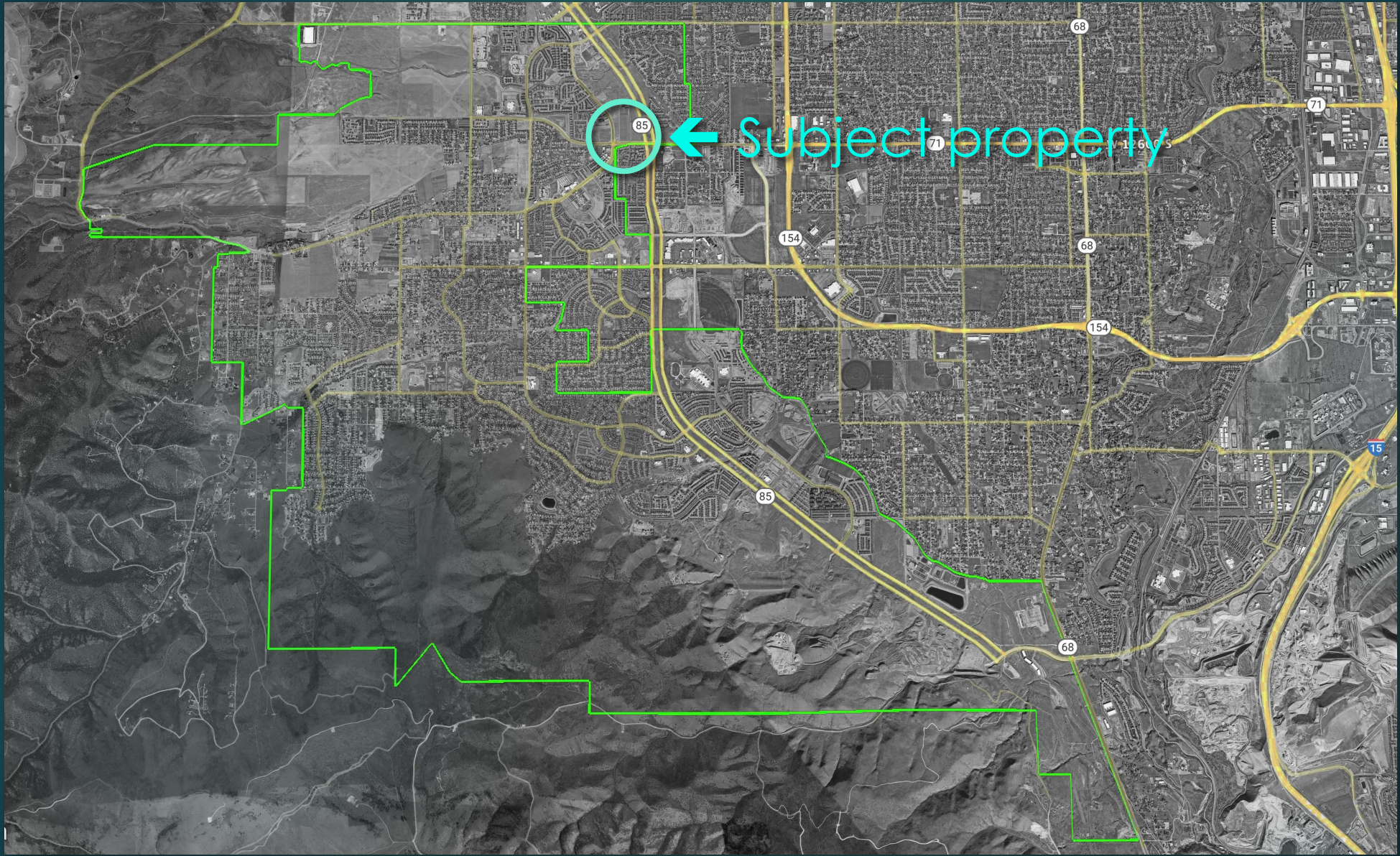
# Conditional Use Amendment

Planning Commission Meeting

January 3, 2024

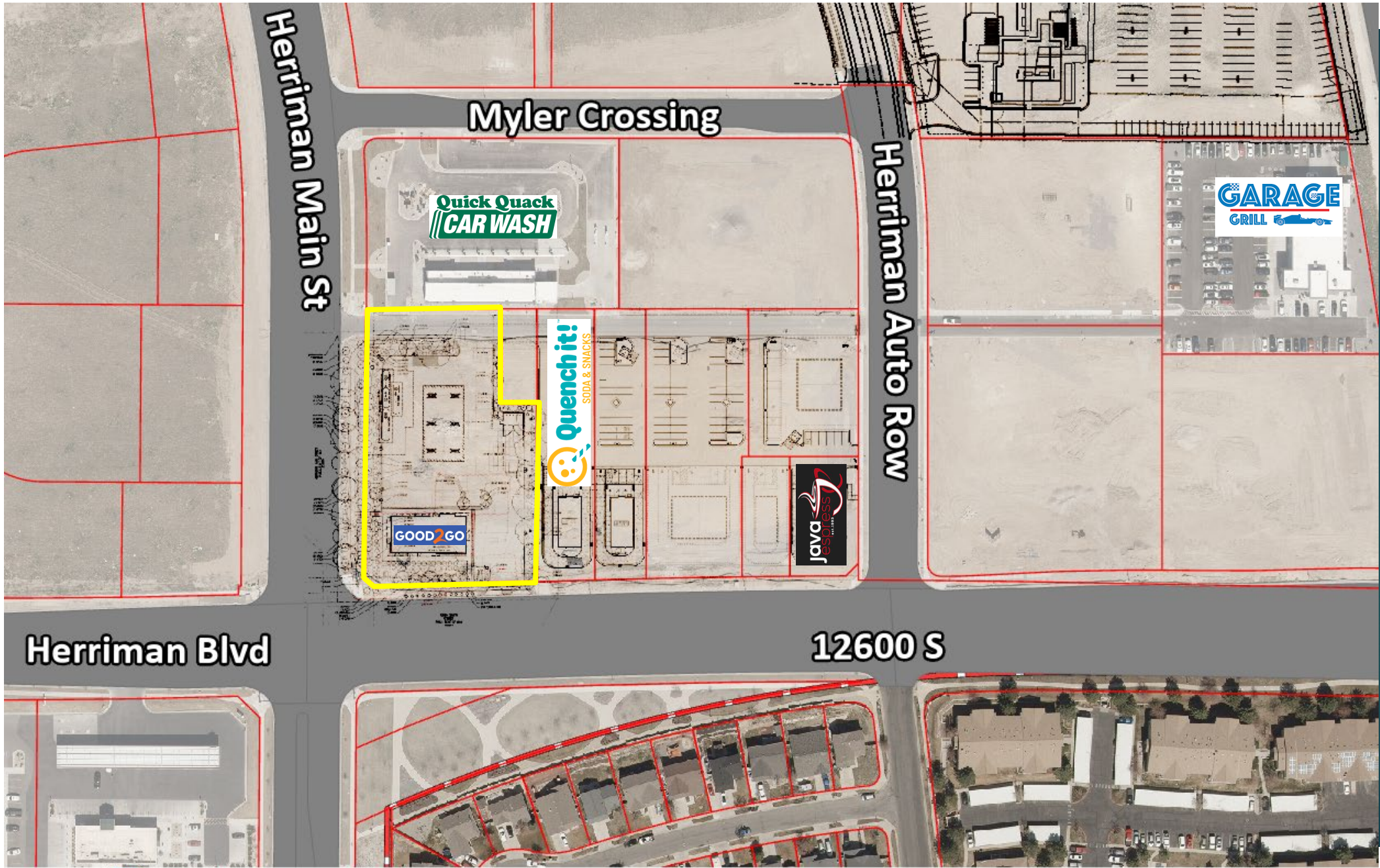






# Vicinity Map



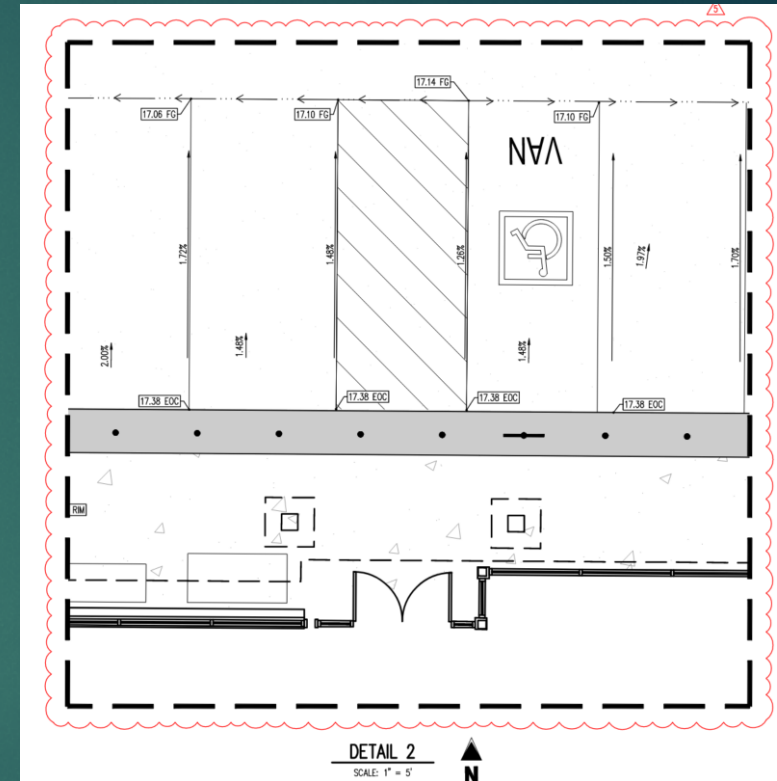
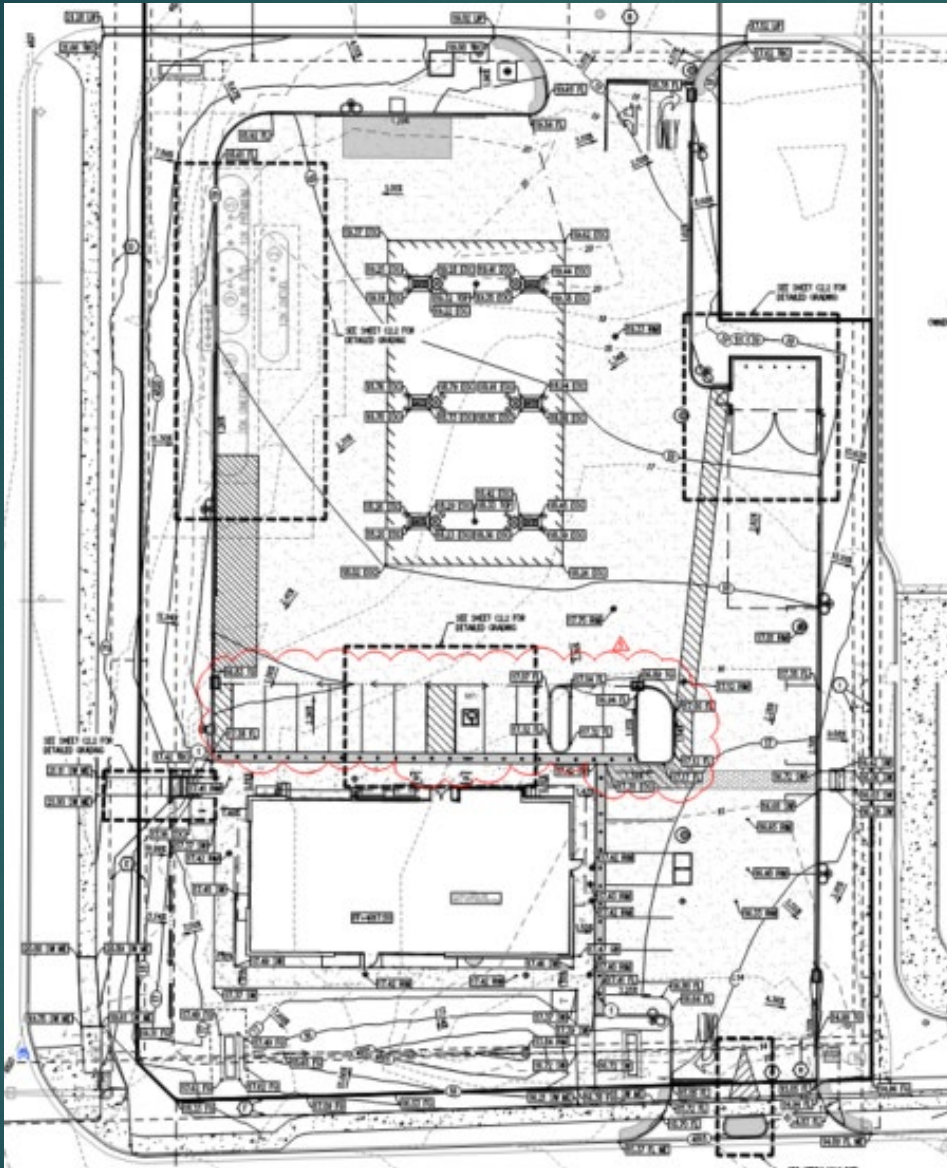


# Vicinity Map



# Proposed Amendments

- ▶ New Entrance Tower
  - ▶ 17' X 27'- 5"
- ▶ Finish Materials
  - ▶ Brick/stone (unchanged)
  - ▶ Aluminum accents revised to dark bronze
  - ▶ Store front (clear anodized) to remain
  - ▶ Approved brick/stone and colors to remain
  - ▶ Fuel Canopy revised to Good 2 Go Orange
- ▶ Site Plan
  - ▶ Entrance tower footprint (does not impact overall site)





# Original Elevations



Proposed Elevations

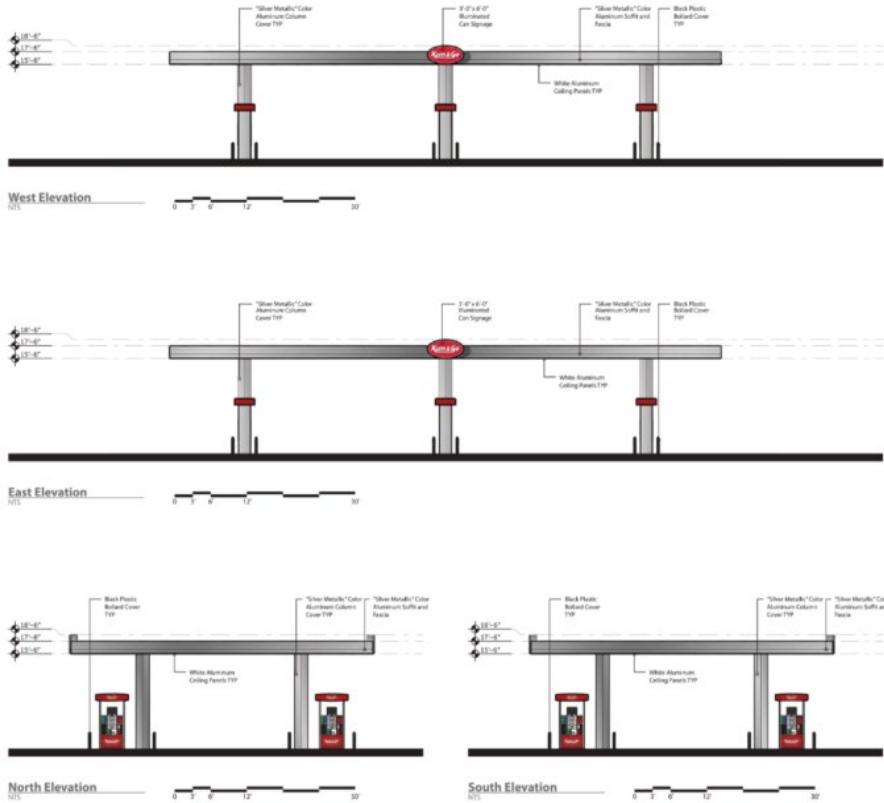
# Original Elevations



**CANOPY**  
 NEW CANOPY FASCIA  
 INSTALL .063 MATTE WHITE WRISCO BAND WITH CHANNEL FOR  
 WHITE L.E.D. DOWN LIGHTING  
 INSTALL ORANGE ACM FASCIA RAISED 4 1/2" FROM WHITE WRISCO BAND  
 (2) LETTER SETS ROUTED FROM FASCIA (SEE DETAIL PAGE)  
 INSTALL (2) LOGOS (SEE DETAIL PAGE)  
 APPLY (1) WHITE VINYL TAG LINE (SEE DETAIL PAGE)

GOOD 2 GO BLUE  
 PMS 7455 C

GOOD 2 GO ORANGE  
 PMS 1585 C



Proposed Elevations

## Considerations of Approval

- ▶ Conditional Use Standards
- ▶ Base Zone Standards
- ▶ Engineering Standards



# Recommendation

## ► Approval with the following conditions:

1. Receive and agree to all remaining corrections from City departments
2. All original conditions of approval must be met (City File # C2022-182)
3. Trash enclosure shall be finished to match primary structure (enclosure cannot be painted and the doors must be 100 percent opaque - §10-23-13)
4. Provide convenient on-site bicycle parking (§ 10-12-6.C.8)
5. No signs are approved with this request