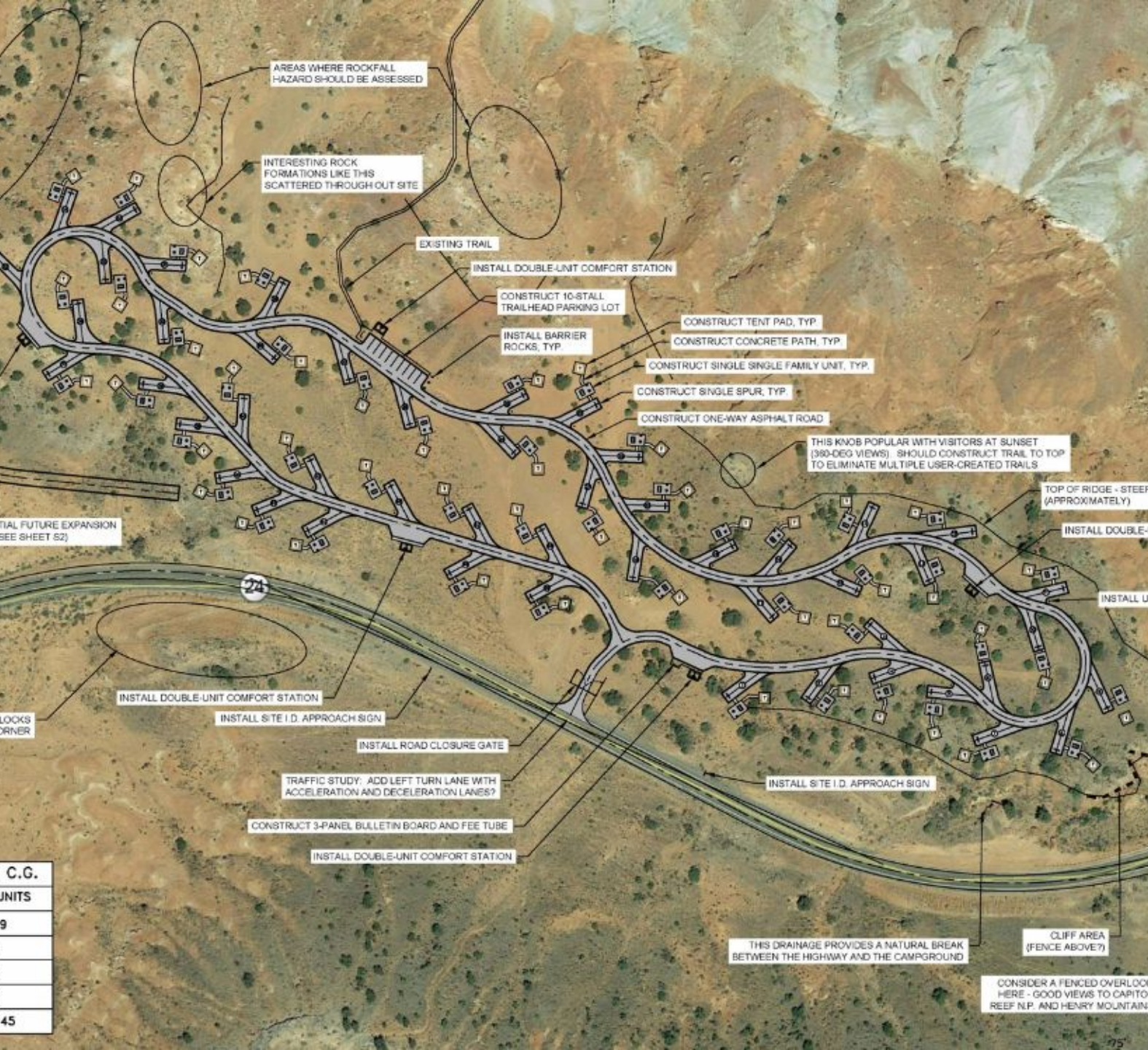


Meeks Mesa Campground

FISHLAKE NATIONAL FOREST

WAYNE COUNTY, UTAH



C.G.

UNITS

9

45

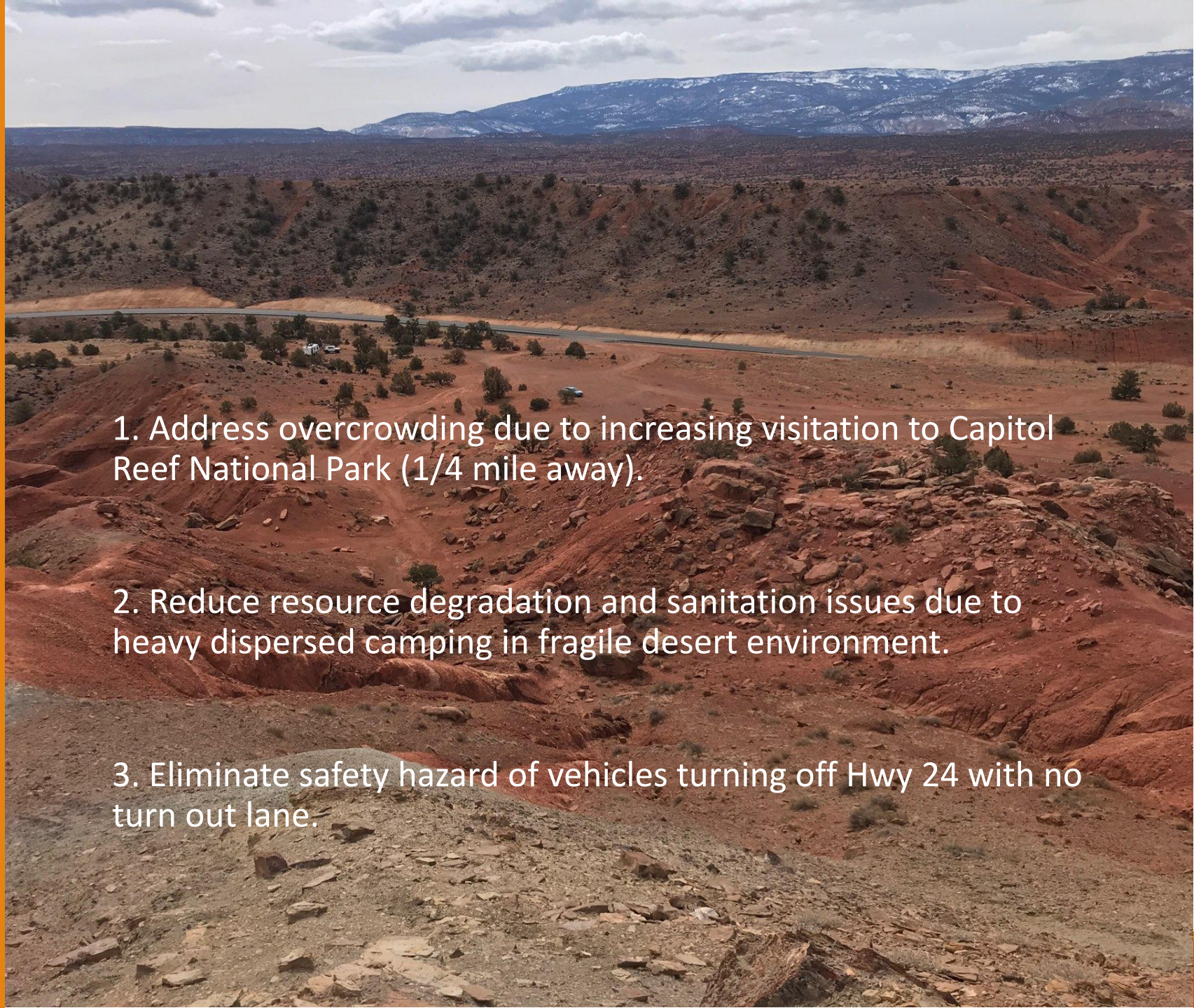
Project Description

Convert an existing, user-created dispersed camping area adjacent to Capitol Reef National Park (CRNP) to a new developed campground.



Why?

1. Address overcrowding due to increasing visitation to Capitol Reef National Park (1/4 mile away).
2. Reduce resource degradation and sanitation issues due to heavy dispersed camping in fragile desert environment.
3. Eliminate safety hazard of vehicles turning off Hwy 24 with no turn out lane.



Project Planning and Timeline

What's Been Done

- A partner group has been convened to address the issue.
- The Forest Service has prepared an engineered concept plan and cost estimate for the campground.
- The Forest Service commenced an Environmental Assessment in late 2022, which is scheduled to be completed in June 2024.
- A cultural inventory of the site is underway, including consultation with SHPO and tribes. Will be completed in early 2024.

What Still Needs to Be Completed

- Traffic study (2024). Funding secured.
- Geotechnical analysis (2024). Funding secured.
- Engineered plans, specifications, and contract package (2024-2025). Will be completed by Forest Service engineers.
- Construction (2026).

Community Input & Stakeholder Contributions

Community Input

- Partner group includes the Forest Service, Wayne County, the BLM, the National Park Service, and UDOT.
- Two rounds of public scoping were conducted in 2023. Thirty-three comments have been received and are being considered.

Stakeholder Contributions

- The BLM has committed to develop a campground nearby to help accommodate the demand for camping opportunities in the area.
- Wayne County has committed to help construct the campground road infrastructure.
- The Forest Service has secured \$379,000 for a traffic study, geotechnical analysis, site stabilization, and turning lane construction.
- The Forest Service is conducting an Environmental Assessment at its expense.
- The Forest Service will prepare engineered plans, specifications, and contract package documents at its expense once project funding is secured.

Requested Support

\$4.5 million in funding for the construction of the Meeks Mesa Campground is requested, based on a government estimate prepared by Forest Service Intermountain Region engineers. Construction will be performed by a qualified contractor whose proposal demonstrates best value to the government, with Forest Service administration and oversight.

USDA Forest Service						
GOVERNMENT ESTIMATE MEEKS MESA CAMPGROUND						
ITEM NUMBER	DESCRIPTION	METHOD OF MEAS.	UNIT	QUANTITY	PRICE	TOTAL
Base Bid						
010250	Construction Staking	LSQ	LS	Lump Sum	\$ 20,000	\$ 20,000
011900	Mobilization for Base Bid	LSQ	LS	Lump Sum	\$ 265,500	\$ 265,500
024102	Removal and Disposal of Existing Structures	LSQ	LS	Lump Sum	\$ 5,000	\$ 5,000
033540	Concrete Sidewalk - 4-Inch Thick	AC	SY	200	\$ 65	\$ 13,000
033540	Concrete Stairs	AC	EA	100	\$ 155	\$ 15,500
033540	Concrete Waterways and/or Drainage Structures	LSQ	LS	Lump Sum	\$ 50,000	\$ 50,000
055210	Pipe and Guard Rail Railings	AC	LF	150	\$ 75	\$ 11,250
101110	Three Panel Bulletin Board (with fee deposit box)	AC	EA	2	\$ 10,700	\$ 21,400
101410	Signs - Regulatory & Directional (Aluminum)	AC	EA	35	\$ 250	\$ 8,750
101410	Signs - Major Site Identification Sign w/ Base	AC	EA	1	\$ 12,000	\$ 12,000
101415	Minor Site I.D. Sign (HDPE)	AC	EA	1	\$ 3,500	\$ 3,500
129400	Family Unit - Single (Concrete Surface Pad, Picnic Table, Utility Table, & Fire Ring)	AC	FA	2	\$ 5,500	\$ 11,000
129400	Family Unit - Single (Aggregate Surface Pad, Picnic Table, Utility Table, & Fire Ring)	AC	EA	47	\$ 4,800	\$ 225,600
129400	Family Unit - Double (Aggregate Surface Pad, Picnic Table, Utility Table & Fire Ring)	AC	EA	1	\$ 6,200	\$ -
129400	Unit Markers	AC	EA	40	\$ 225	\$ 11,025
262100	Electrical Distribution System (Solar for 2 Posts)	LSQ	LS	Lump Sum	\$ 40,000	\$ 40,000