



JORDAN VALLEY WATER
CONSERVANCY DISTRICT

Shane Swensen

Engineering Department Manager

& Chief Engineer

shanes@jvwcd.org

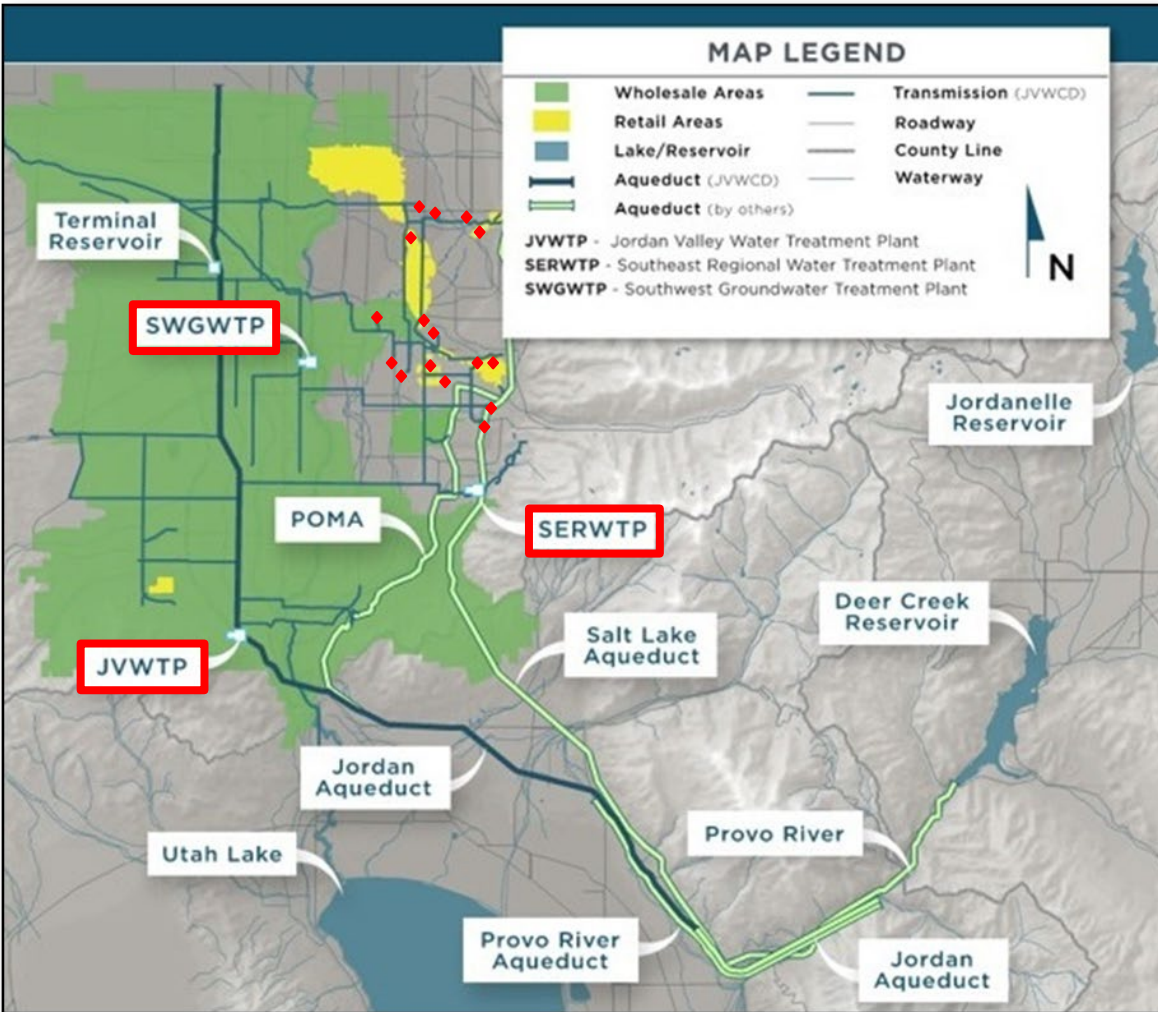
11-15-2023

JVWTP Drought, Wildfire, and Earthquake Resiliency Project

Community Outreach



Introduction

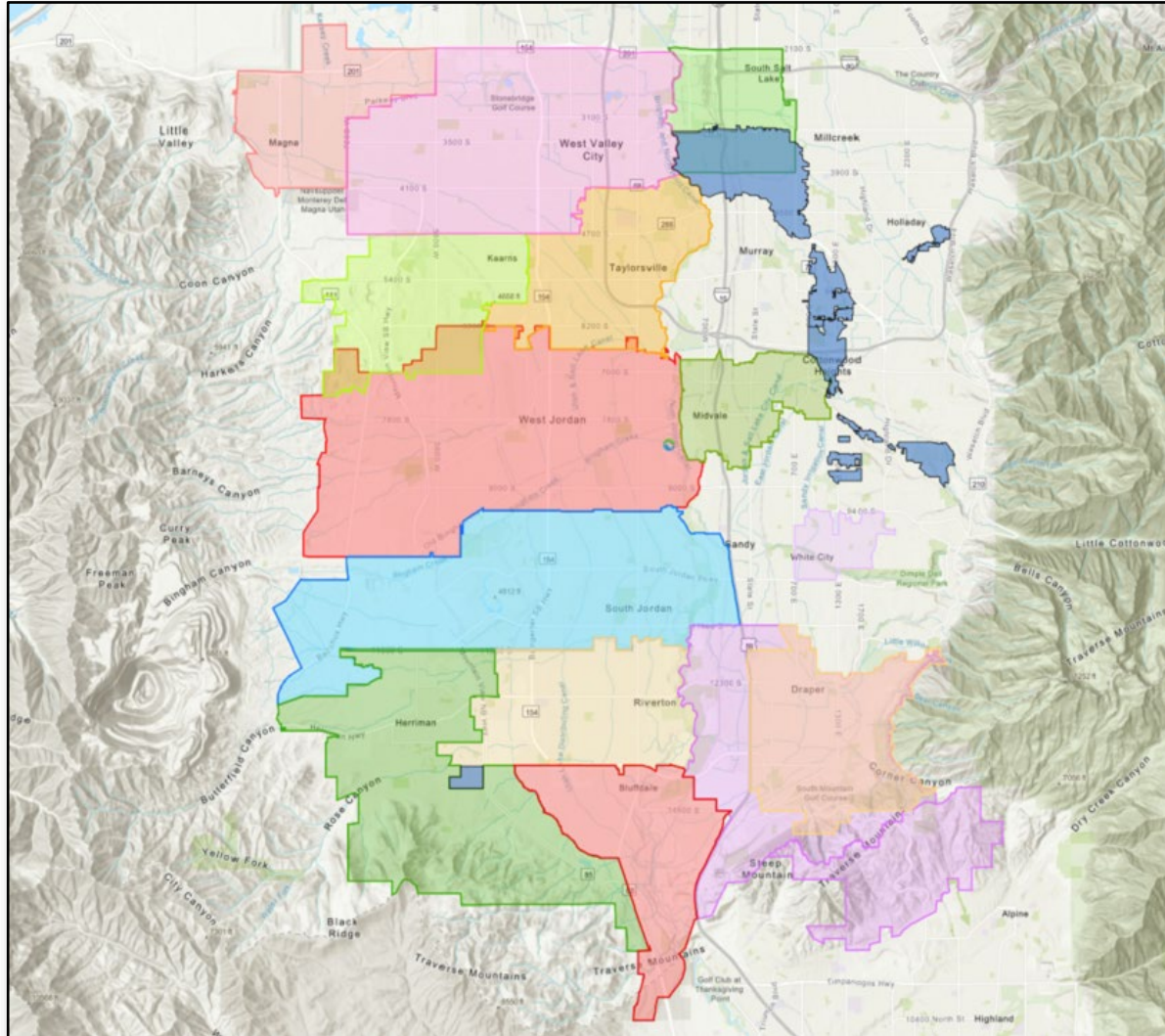


Jordan Valley Water Conservancy District (JVWCD)

- Political Subdivision of the State of Utah
- Established in 1951 under the Water Conservancy Act as the Salt Lake County Water Conservancy District
- Wholesale water provider to South and West Salt Lake County
- Primary supply facilities:
 - Jordan Valley Water Treatment Plant (JVVTP)
 - Southeast Regional Water Treatment Plant (SERWTP)
 - Southwest Regional Groundwater Treatment Plant (SWGTP)
 - 40 Groundwater wells



Introduction



Jordan Valley Water Conservancy District (JVWCD)

- Serves 800,000 throughout Salt Lake County
- 17 Member Agencies
- 130,000 Acre Feet per year
- 250 million gallon per day capacity
- Governed by a board of 9 Trustees

Taylorsville City's Water Supply

We are honored to support TBID in their mission to public health through safe and reliable culinary water distribution.



JORDAN VALLEY WATER
CONSERVANCY DISTRICT

40% of TBID's water supply.



WATER DISTRIBUTION
TAYLORSVILLE
BENNION
IMPROVEMENT
DISTRICT
WASTEWATER COLLECTION

Mission Statement:
To preserve the public health and environment through safe and reliable distribution of culinary water and collection of sanitary sewer.

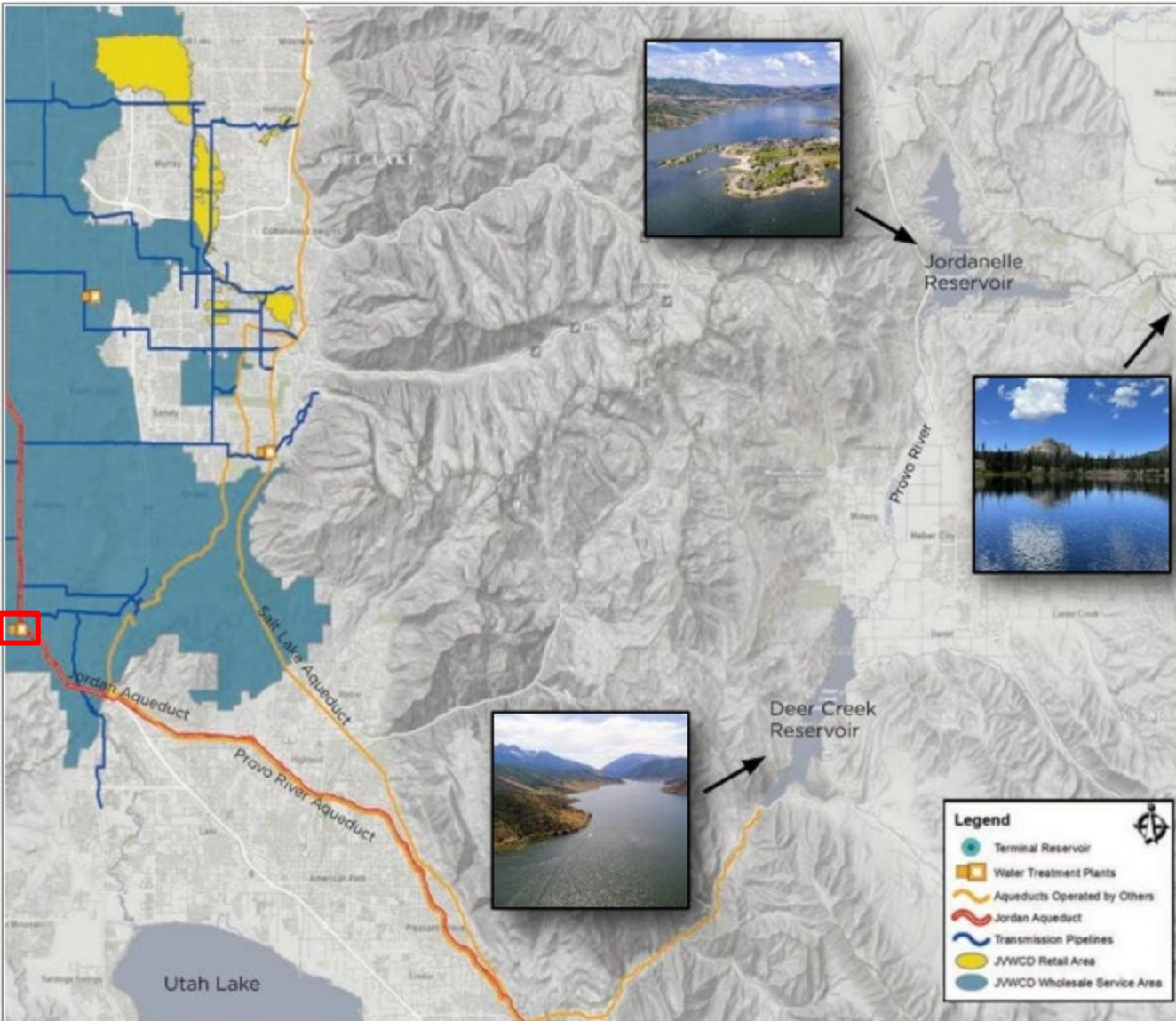


TAYLORSVILLEUT
Where Community Connects

Sustaining Resident's Quality of Life



JVWTP History



Jordan Valley Water Treatment Plant (JVWTP)

- Location: Herriman, Utah
- Start of Operation: 1972
- Design Capacity: 138/180 MGD
- Largest municipal water treatment plant in Utah.
- Supplied from Provo River via Jordan Aqueduct and Provo River Aqueduct



JVWTP History



1971 | 42 MGD



2024 Upgrade Project

1960

1970

1980

1990

2000

2010

2020

2030

PLANT EXPANSION TIMELINE



1979 | 60 MGD



1985 | Sedimentation: 138 MGD
Filtration: 180 MGD

Hazards

Drought, wildfire, and/or earthquake have the potential to reduce or stop production for weeks to years due to deficiencies in the 1971 portion of the plant.

1

Drought



Jordanelle Reservoir 2022

Credit: Scott G. Winterton, Deseret News

Hazards

Drought, wildfire, and/or earthquake have the potential to reduce or stop production for weeks to years due to deficiencies in the 1971 portion of the plant.

2

Wildfire



Credit: Michael Stevens,
USGS

Hazards

3

Earthquake

Drought, wildfire, and/or earthquake have the potential to reduce or stop production for weeks to years due to deficiencies in the 1971 portion of the plant.



Magna, Utah 2020

Credit: earthquakes.Utah.gov

FEMA BRIC Program

Provides grants to mitigate natural hazards to minimize or prevent service disruptions and the resulting economic impact.



FEMA

Building **R**esilient **I**nfrastructure
and **C**ommunities

JVWCD is applying for a \$46M grant to help pay for this \$70M project.

Resiliency Project

Mitigate potential for service disruption to maintain the following during a natural hazard:

- Water service to hospitals and other recovery centers
- Fire suppression
- Residential sanitation needs





JWWCD Drought, Wildfire, Earthquake Resiliency Project Website Homepage

- How important this project is to you and your community.
- Residents' ability to absorb increased water bills to pay for the project.
- Anything you would like us to consider with this project.

Feedback Wanted!

The screenshot shows a web browser window with the URL <https://sites.google.com/view/jwwcdresiliencyproject/comment-form>. The page features the JWWCD logo and a navigation menu with links for Home, FAQ, and Comment Form. The main heading is "Comment Form". A blue banner below the heading reads: "We invite your comments and feedback on the Project and FEMA's grant program." The feedback form itself is titled "JWWCD Regional WTP - Drought, Wildfire, and Earthquake Resiliency Project Feedback". It includes a thank you message and a request for input. The form fields are: "Contact Information: Name, Email and/or Phone Number *" with a text input field labeled "Your answer"; and "City of Residence *" with a text input field labeled "Your answer". A red asterisk indicates required questions. The user is logged in as "youngstake@gmail.com" with a "Switch account" link and a "Not shared" status.

Jacob Young | Deputy General Manager | Jacoby@jwwcd.org