

WASHINGTON COUNTY ALPR'S

- ALPR systems and gathering ALPR reads.
- ALPR, What it does and doesn't do.
- ALPR Data collection.
- Storing, accessing, and sharing ALPR data.
- Purpose and scope of ALPR use. 41-6A-2003
- ALPR transparency.



APLR systems

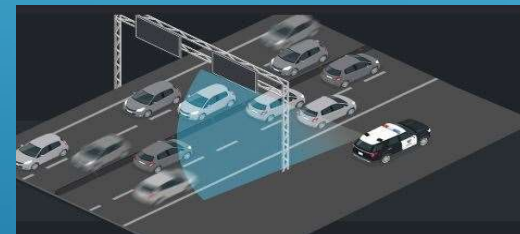
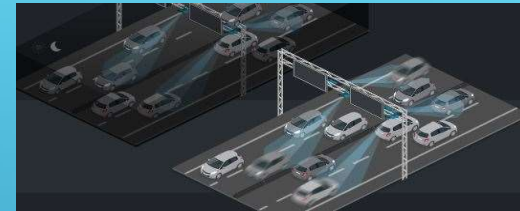
Fixed ALPR – None in Washington County (excluding ZNP), but coming.

Quick-Deploy – 7 in use in Washington County.

Mobile – 7 in use in Washington County.

In-Car – 34 available, none being used in Washington County.

App-Based scanners – 18 active in Washington County.



How is ALPR Data collected?

- APLR reads the plates, transmits the data via cellphone network to the ALPR (Vigilant and PiPPS) servers, and checks the read against any Hot-Lists. If any Hot-List matches, the agency/officers are notified via in-car, cellphone (app), or email.
- Photo of the vehicle, plate, time, location, and sometimes speed are transmitted.
- Data is collected and transmitted as long as the unit is operating, without any officer input.



ALPR, What it does, and doesn't do.

- Reads numbers and letters in view from public places.
- Takes a photo of the vehicle.
- Runs the information against Hot-Lists.
- Attempts to identify the vehicle year/make/model/ and color.
- Stores the photo, plate info, and Meta Data for later retrieval.
- Run registration. The system does not know or have access to who the vehicle belongs to or who is inside the vehicle.
- Identify or track the individuals inside the vehicle.
- Independently solve crimes. Everything requires an officer to investigate or confirm their searched information.



Storing, accessing, and sharing ALPR data.

- There are currently two data centers for Vigilant depending on your physical location, California and Florida. Ours is transmitted and stored in California. PiPPS is transmitted to SLC at the end of the officer's shift.
- Each law enforcement agency owns their own data or reads.
- Only users who have completed the Vigilant online training and our ALPR in-house training are given access to the system.
- MOUs are signed between law enforcement agencies to access each other's data.
- Law Enforcement can purchase "Enterprise Data" from non-law enforcement reads.
- All returns from the ALPR are "searched" by the officer, even Hot-Lists.
- All data is required to be saved for a minimum of 14 days, but not more than nine months. All our data is stored for 270 days, then automatically purged by the system.
- Audit info and the ability to audit is stored for five years.
- Quarterly audits of ALPR searches by our officers (Two active for historical history).



Purpose and scope of ALPR use. 41-6A-2003

- 41-6a-2003 Automatic license plate reader systems -- Restrictions. 5/3/2023
 - (1) Except as provided in Subsection (2), a governmental entity may not use an automatic license plate reader system.
 - (2) Subject to Subsection (3), an automatic license plate reader system may be used:
 - (a) by a law enforcement agency:
 - (i) as part of an active criminal investigation;
 - (ii) to apprehend an individual with an outstanding warrant;
 - (iii) to locate a missing or endangered person; or
 - (iv) to locate a stolen vehicle;

What law enforcement gained and lost from the change

- Release of ALPR Data has to be order by a judge 41-6A-2005 (2).
- Use of DOT property with permits.
- Traffic (non-criminal).
- Interdiction.
- Utah data (Insurance/expired/suspended/revoked registration).
- Some Hot-Lists (officer safety, terrorist watch, smash n grab, interdiction. (46 categories)
- Number of cases from ALPR use. 10/2



ALPR transparency.

- Per 41-6A-2003, Washington County has our ALPR policy posted on our website. We have no permits from UDOT as they are not being issued yet. No ALPR on UDOT property

**Policy
224**

Washington County Sheriff's Office
Field Operations Policy Manual

Automated License Plate Readers (ALPRs)

224.1 PURPOSE AND SCOPE
The purpose of this policy is to provide guidance for the capture, storage, and use of digital data obtained through the use of the automated license plate reader (ALPR) technology (Utah Code 41-6a-2003).

224.2 ADMINISTRATION
The ALPR technology, also known as license plate recognition (LPR), allows for the automated detection of license plates. It is used by the Washington County Sheriff's Office to convert data associated with vehicle license plates for official law enforcement purposes, including identifying stolen or wanted vehicles, stolen license plates, and missing persons. It may also be used to gather information related to active warrants, homeland security, electronic surveillance, suspect interdiction, and stolen property recovery.

All installation and maintenance of ALPR equipment, as well as ALPR data retention and access shall be managed by the Patrol Chief Deputy. The Patrol Chief Deputy will assign personnel under the Patrol Chief Deputy's command to administer the day-to-day operation of the ALPR equipment and data.

224.2.1 SPECIAL USE PERMITS
The Patrol Division Chief or the authorized designee shall obtain required special use permits before installation of stationary ALPR equipment when applicable (Utah Code 41-6a-2003; Utah Code 72-1-212).

224.3 OPERATIONS
Use of an ALPR is restricted to the purposes outlined below. Office personnel shall not use or allow others to use the equipment or database records for any unauthorized purpose.

- (a) An ALPR shall only be used for official and legitimate law enforcement business (Utah Code 41-6a-2003).

