



Staff Report

Coalville City
Community Development Director

To: Coalville City Planning Commission
From: Don Sargent, Community Development Director
Date of Meeting: August 21, 2023
Re: General Plan Exhibits
Action: Work Session - Review and Discussion of the Future Land Use and General Transportation Exhibits

General Plan Exhibits

REQUEST: Review and discuss exhibits for the General Plan.

BACKGROUND: On March 20, 2023, the Planning Commission recommended approval of General Plan updates to the City Council with the request that the exhibits that were being updated be verified by the Planning Commission. The Planning Commission reviewed the exhibits at their meeting on May 15th and recommended the City Council to direct Staff to update 2 additional general plan exhibits.

ANALYSIS: As recommended by the Planning Commission, the City Council directed Staff to coordinate the review and evaluation of updates for future land use area designations and transportation connections and routes on the associated maps. The last update to these exhibits was 10 years ago.

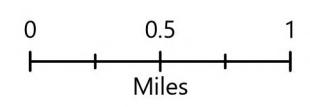
Staff recently coordinated with JUB for generating a GIS shape file of the existing exhibits with current formatting and base mapping in the city for initiating the updates. JUB is also in the process of conducting an inventory of roadways in the city which will be reflected on the transportation map. Attached are the current exhibits for continued review, input, and direction. Also attached are the existing (old) maps for reference.

RECOMMENDATION: Staff recommends the Planning Commission review the exhibits and provide direction for updates to the maps for verification at a subsequent meeting.

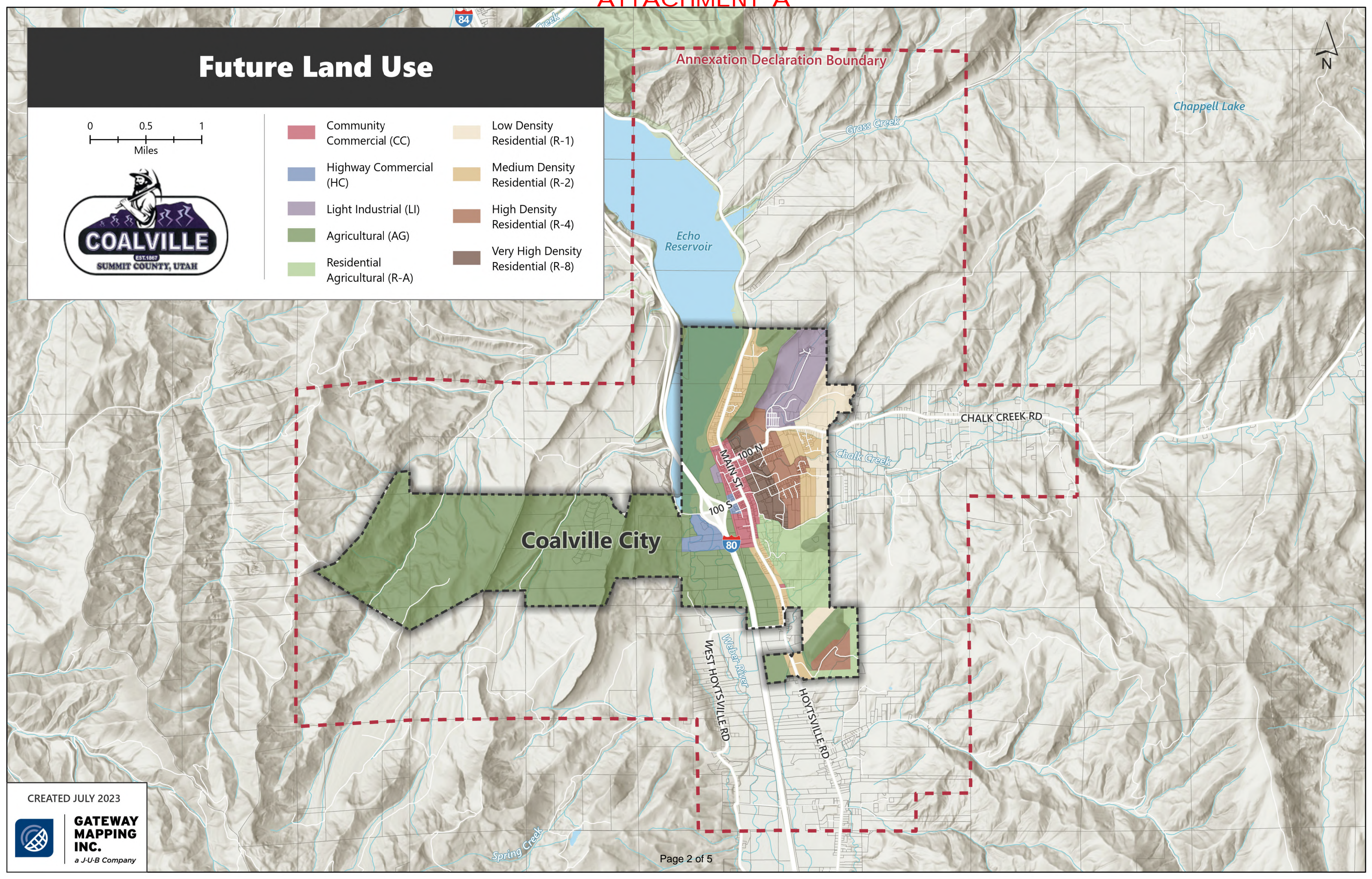
ATTACHMENTS

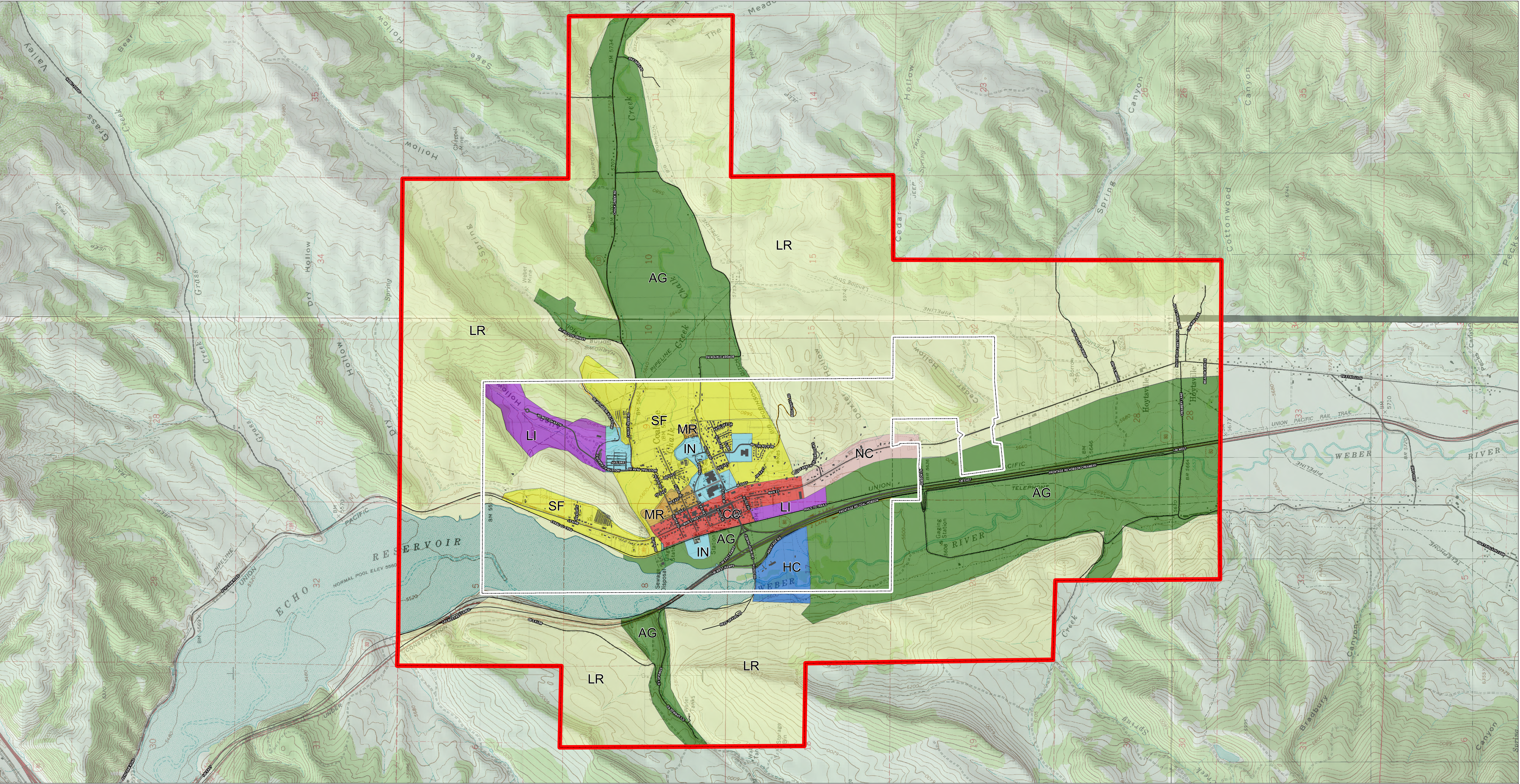
- A. Draft Updated Future Land Use Map
- B. Existing (old) Future Land Use Map
- C. Draft Updated General Transportation Map
- D. Existing (old) General Transportation Map








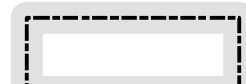




Future Land Use



- | | |
|--------------------------------|-------------------------------------|
| Community Commercial (CC) | Low Density Residential (R-1) |
| Highway Commercial (HC) | Medium Density Residential (R-2) |
| Light Industrial (LI) | High Density Residential (R-4) |
| Agricultural (AG) | Very High Density Residential (R-8) |
| Residential Agricultural (R-A) | |





LEGEND							
	Community Commercial (CC)		Agricultural (AG)		Medium Residential (MR)		Annexation Boundary
	Highway Commercial (HC)		Single Family (SF)		Institutional (IN)		City Limits
	Neighborhood Commercial (NC)		Low Residential (LR)		Light Industrial (LI)		Roadways

COALVILLE CITY MUNICIPAL CORPORATION

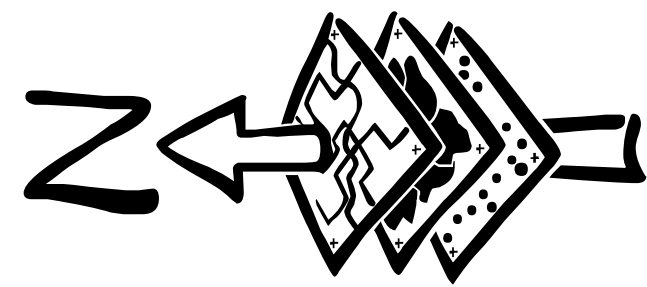
Future Land Use Map



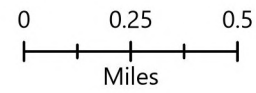
CITY COUNCIL APPROVAL

Prepared under direction of the Coalville City Planning Commission and approved by the Coalville City Council as amended.

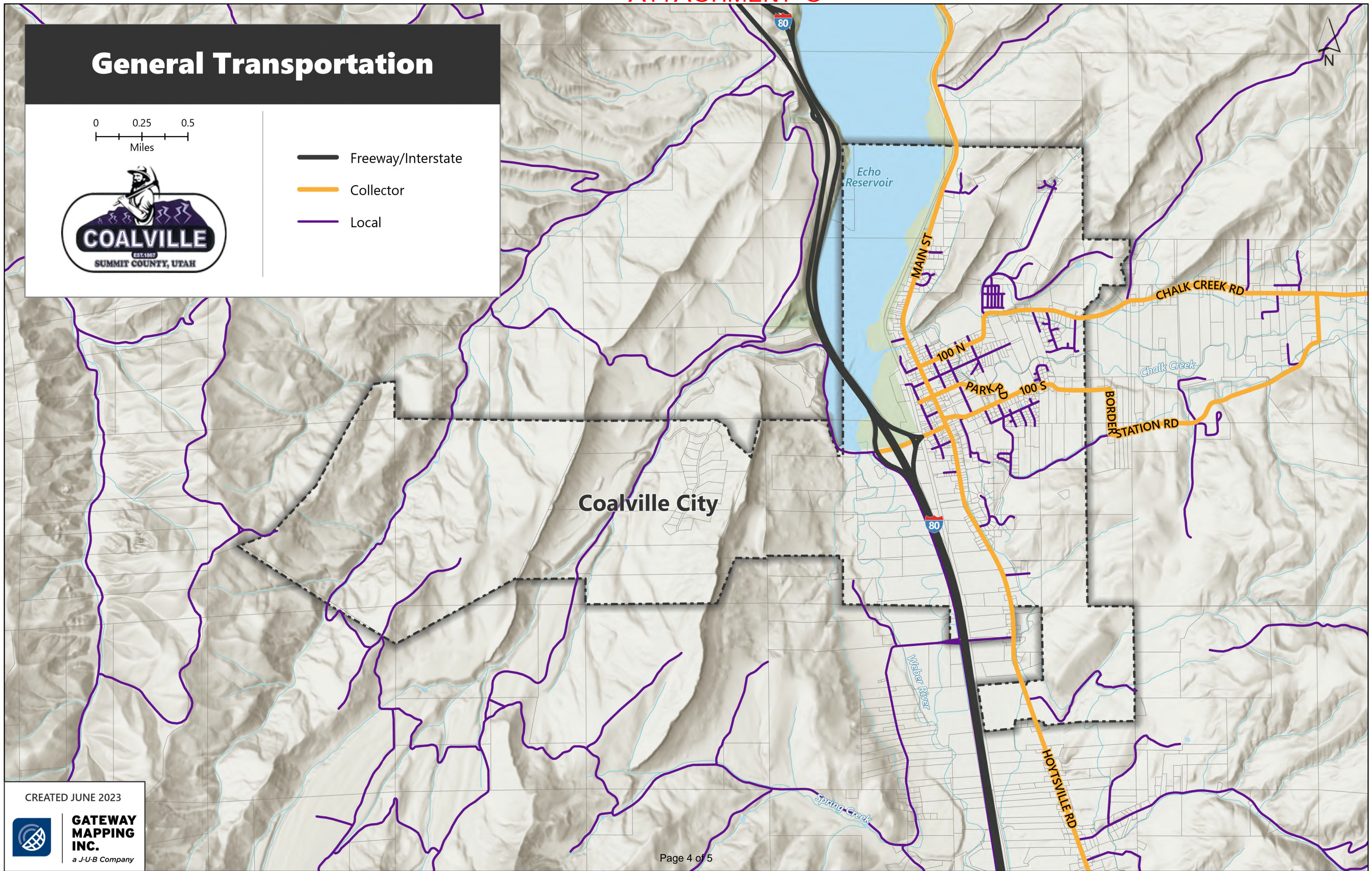
May 24, 2012



General Transportation



- Freeway/Interstate
- Collector
- Local

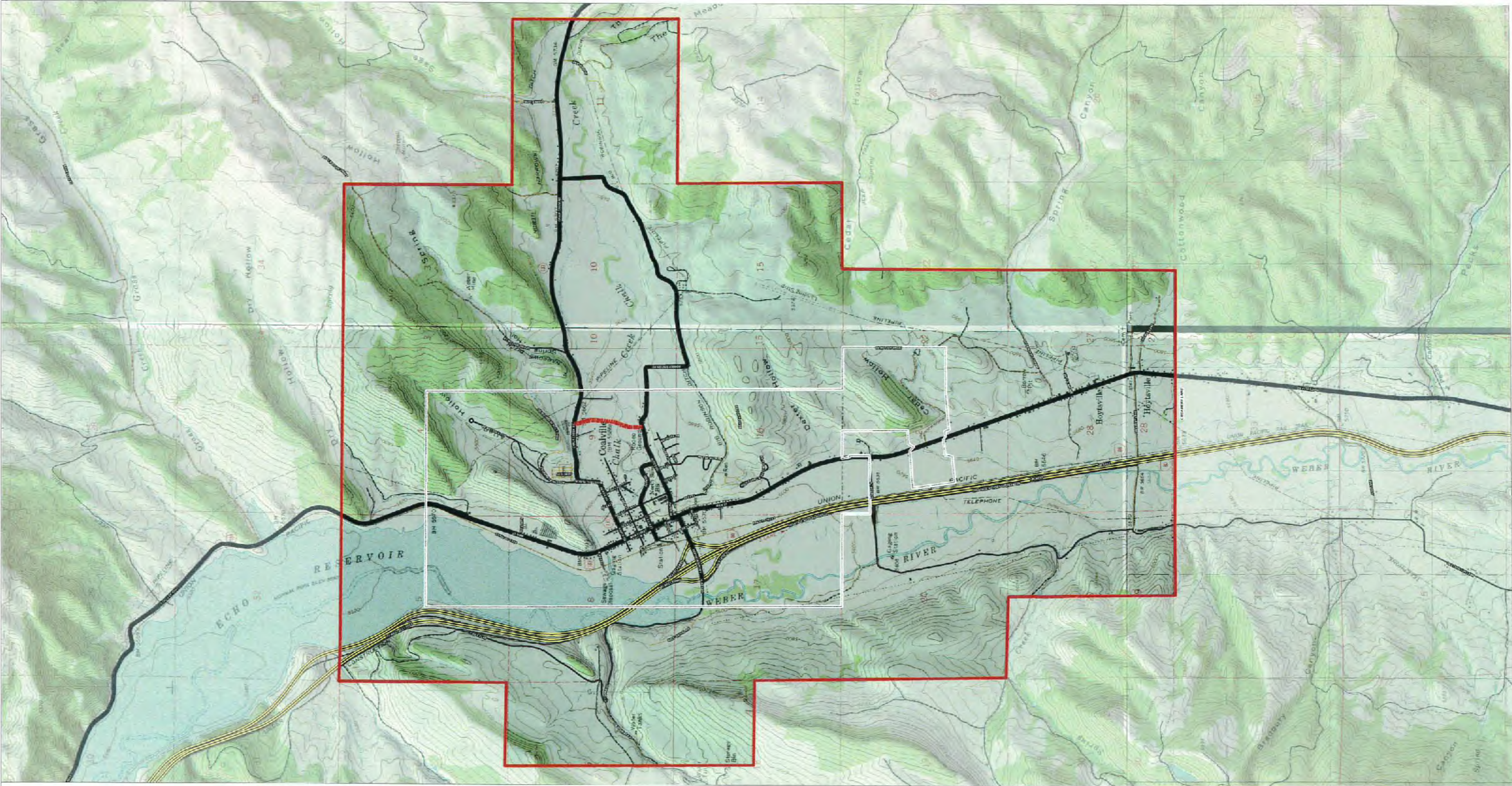










CREATED JUNE 2023



**GATEWAY
MAPPING
INC.**
a J-U-B Company

ATTACHMENT D



LEGEND			
 Annexation Boundary	 Collector	 Freeway/Interstate	 Other Roads
 City Limits	 Future Collector	 Local Roads	 Topography

COALVILLE CITY MUNICIPAL CORPORATION
General Transportation



CITY COUNCIL APPROVAL
Prepared under direction of the Coalville City Planning Commission
and approved by the Coalville City Council as amended
May 24, 2012

