

2022 Annual Report



Communicable Disease and Epidemiology Division



Healthy Choices. Healthy People. Healthy Communities.

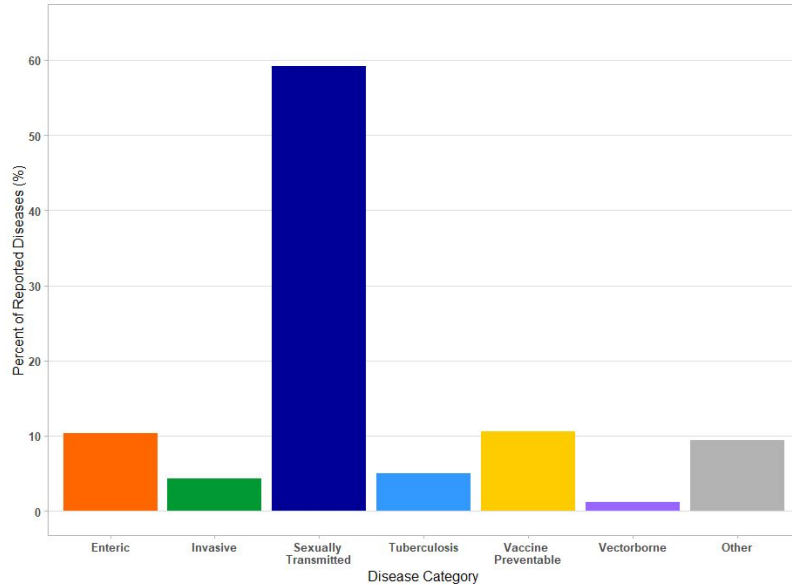
Agenda

- Disease Reporting Summary
- Highlights
- Social Determinants of Health

Disease Reporting Summary

Disease Summary

Percent of All Diseases Reported, by Category, 2022



<u>Disease Category</u>	<u>Count (%)</u>
Enteric	223 (10.3%)
Invasive	93 (4.3%)
Sexually transmitted	1,280 (59.1%)
Tuberculosis	109 (5.0%)
Vaccine preventable	230 (10.6%)
Zoonotic and vectorborne	25 (1.6%)
Other	204 (9.4%)
Total	2,164

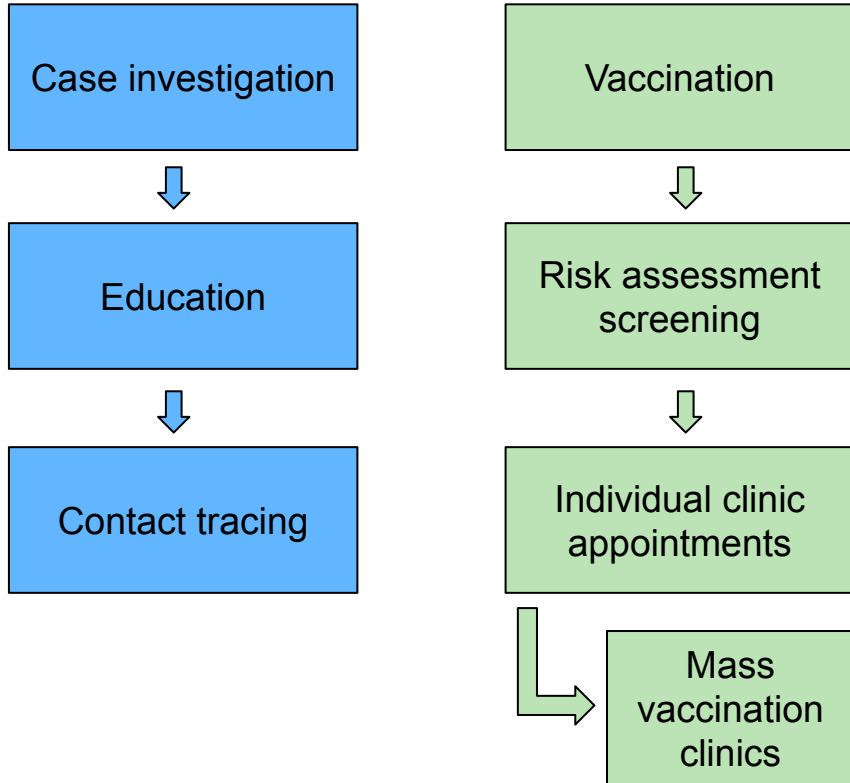
Top 20 + COVID-19

<u>Rank</u>	<u>Disease</u>	<u>Count</u>
1	COVID-19	51,696
2	Chlamydia	986
3	Gonorrhea	237
4	Influenza-associated hospitalization	188
5	Hepatitis C, acute and chronic	120
6	Tuberculosis, latent	104
7	Streptococcal disease, invasive	77
8	Norovirus	73
9	Carbapenem-Resistant Organisms (CRO)	67
10	Campylobacteriosis	52
11	Syphilis - all stages	44

<u>Rank</u>	<u>Disease</u>	<u>Count</u>
12	Salmonellosis	41
13	Cryptosporidiosis	21
14 (t)	Chickenpox (Varicella)	17
14 (t)	Mpox (Monkeypox)	17
14 (t)	Shiga toxin-producing <i>E. coli</i> (STEC)	17
17	Giardiasis	16
18	Hepatitis B, acute and chronic	15
19	Human immunodeficiency virus (HIV)	13
20	Pertussis	9
21	Coccidioidomycosis	8

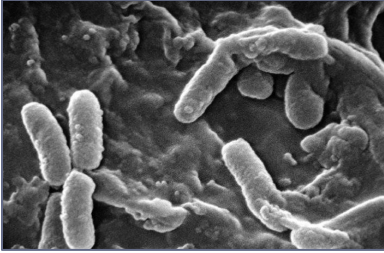
Highlights

Mpox (monkeypox) Response



- 42 investigations, 17 cases
- 429 vaccine doses administered
- Mass vaccination clinics held on August 20 and September 17, 2022
- Developed risk assessment screening tool to prioritize vaccinations
 - Exposed to confirmed mpox case?
 - HIV+ or otherwise immunocompromised?
 - Number of MSM sexual partners?
 - Travel to high-risk location and had MSM sexual contact?
 - Request referrals for eligible recipients
 - And more

Outbreak of Extensively Drug-resistant *Pseudomonas aeruginosa*



Outbreak strain VIM-GES-CRPA never reported before in the U.S.

First Davis County case identified in July 2022 (all Utah cases in Davis County).

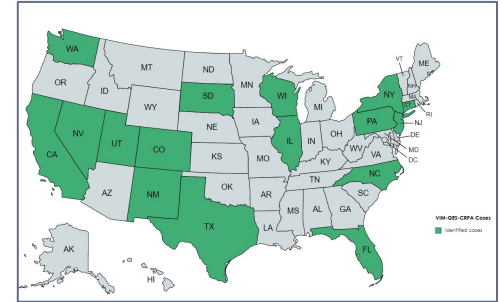
Genetically linked to nationwide outbreak.



Most patients report using artificial tears.

Lab testing confirmed VIM-GES-CRPA in opened bottles of EzriCare Artificial Tears.

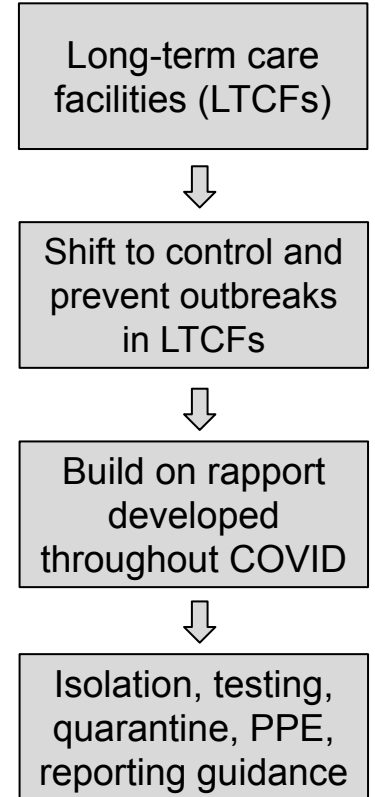
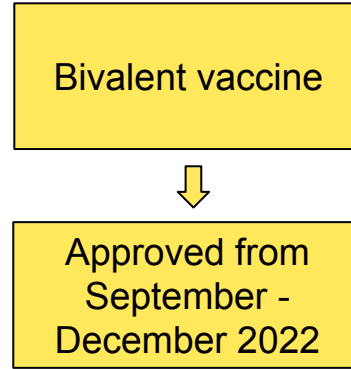
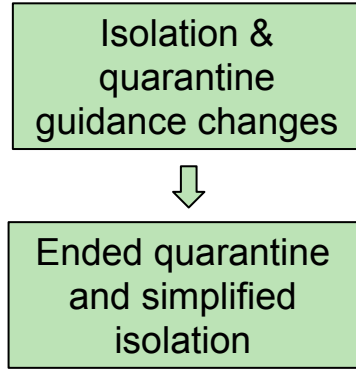
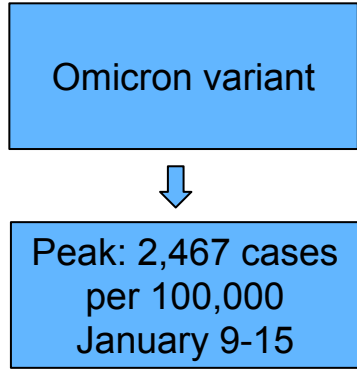
Delsam Pharma's Artificial Tears.



68 patients in 16 states as of March 14, 2023 (37 in four healthcare facility clusters).

CD/Epi nurses assisted with mass patient testing and infection prevention procedures.

COVID-19 Response Highlights



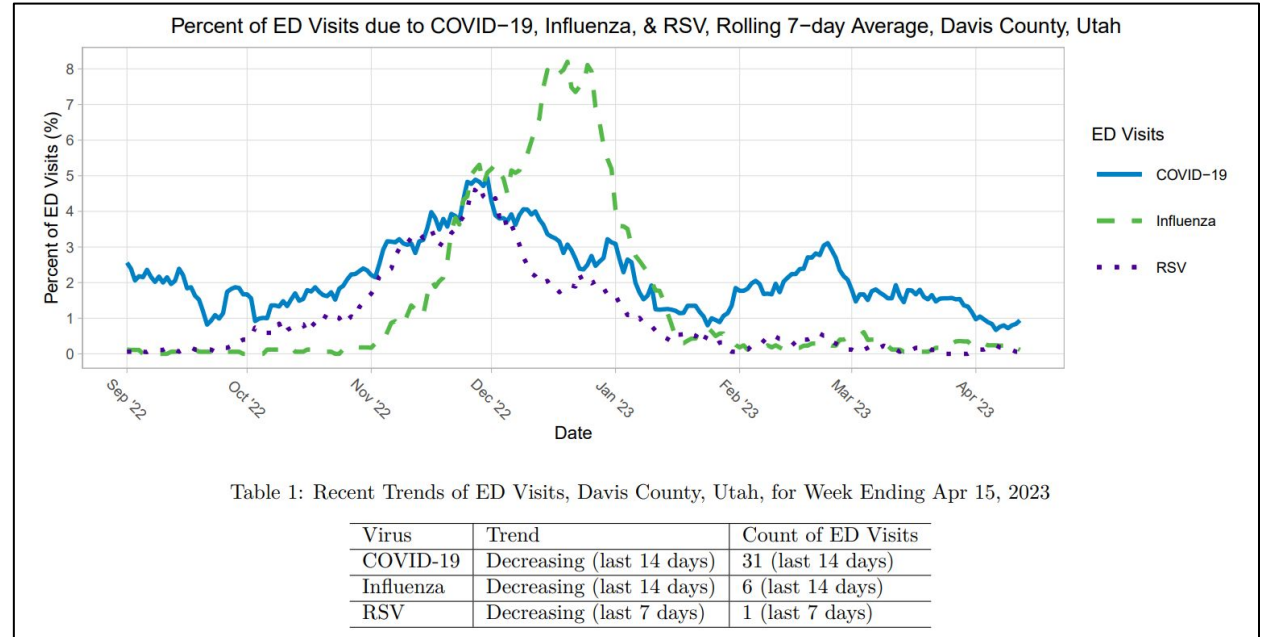
Respiratory Illness Report

Expanded the flu report to include on RSV and COVID-19.

Released Fridays beginning October through May.

Includes:

- Summary with updated messaging
- ILI trends
- School absenteeism trends
- ED visit trends
- Hospitalizations



Screenshot from recent report

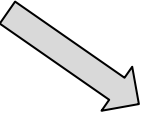
New Clinic Room



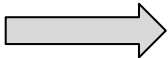
Social Determinants of Health

Utah Healthy Places Index

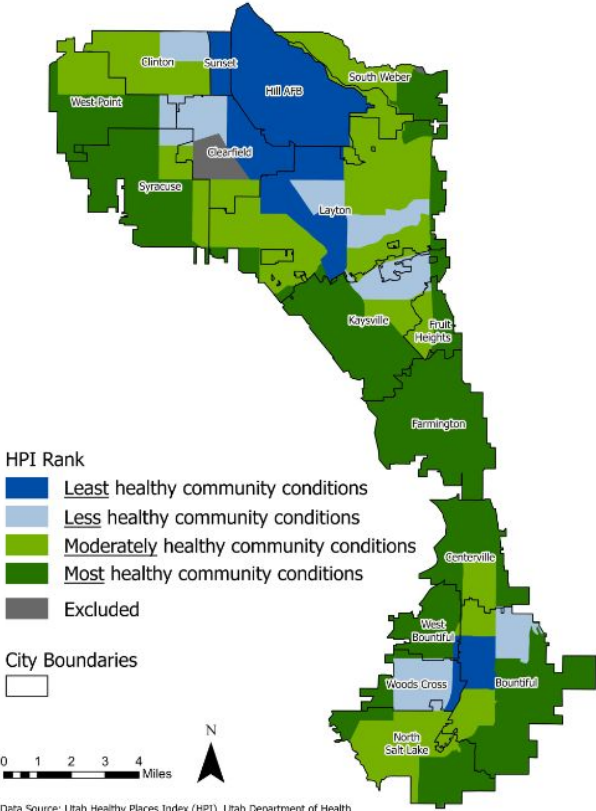
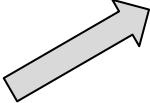
American
Community
Survey data



HPI score



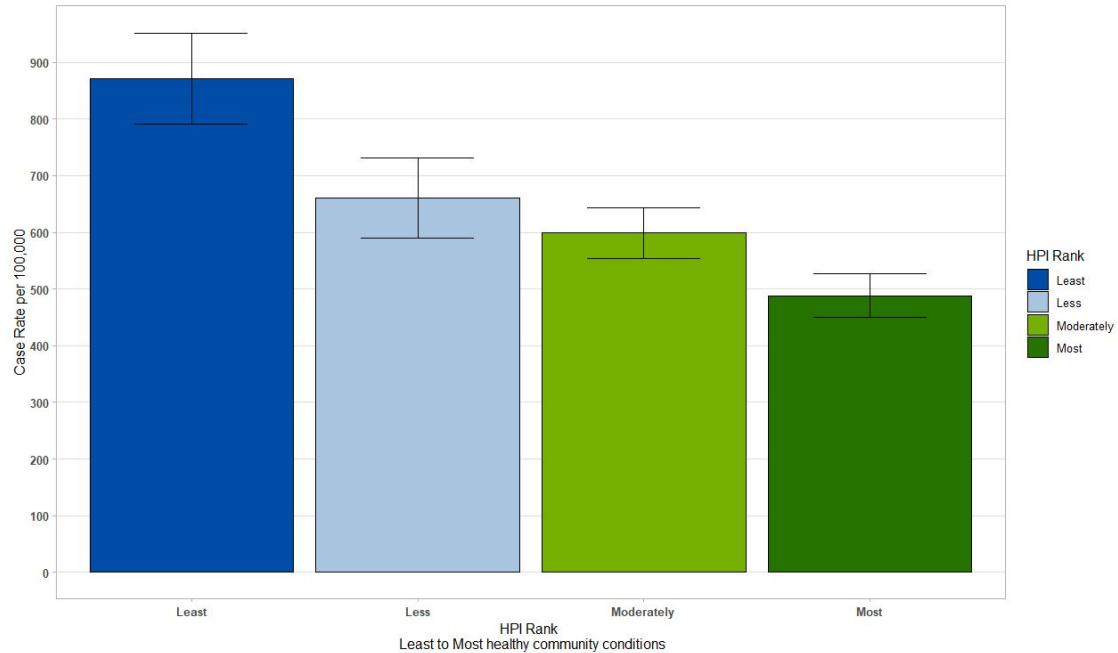
Life expectancy at
birth



Data Source: Utah Healthy Places Index (HPI), Utah Department of Health and Human Services and the Public Health Alliance of Southern California

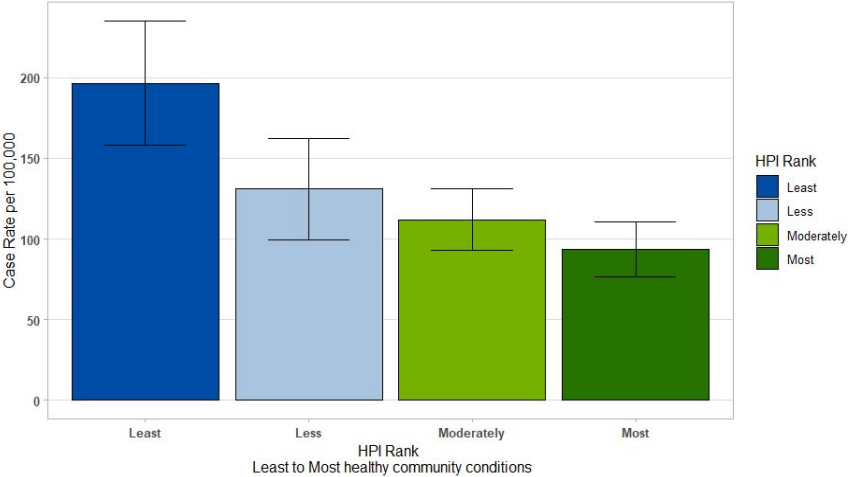
Disease Summary by HPI

Rate of Disease Reports, by HPI Rank, 2022

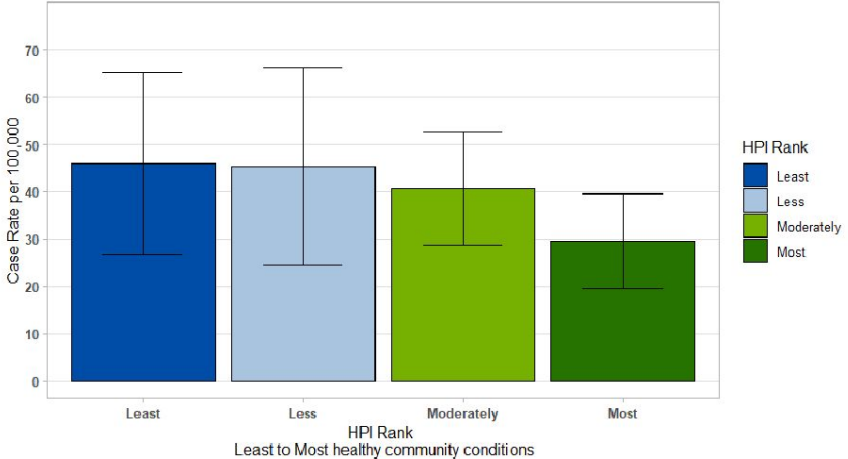


COVID-19 Hospitalizations & Mortality by HPI

Rate of COVID-19 Hospitalizations, by HPI Area



Rate of COVID-19 Mortality, by HPI Area



Thank you

Questions?