

**AGENDA ITEM # VIII-C.**

**Five County Association of Governments**

1070 West 1600 South, Building B  
St. George, Utah 84770

Fax (435) 673-3540



**SOUTHWEST UTAH**

Post Office Box 1550  
St. George, Utah 84771

Office (435) 673-3548

**PERMANENT COMMUNITY IMPACT FUND BOARD APPLICATION  
STEERING COMMITTEE REVIEW**

**Project Title:**

Ivins City - Ambulance

Application Reviewed by Five County AOG Steering Committee: October 9, 2013

**Applicant Identification, Address:**

Ivins City  
55 N. Main Street  
Ivins, UT 84738

**Funding:**

<u>CIB Grant</u>	<b>\$ 132,000.00</b>
<b>TOTAL PROJECT</b>	<b>\$ 132,000.00</b>

**Project Description as provided by Applicant:**

Ivins City began ambulance service to the City in 2007. Service has historically been provided with 2 EMTs on duty 24 hours a day 365 days per year. On April 14, 2013, Gold Cross Ambulance was awarded the contract for St. George by the Utah Bureau of Emergency Medical Services. When that decision was handed down, Dixie Ambulance abruptly closed their doors and went out of business. Their assertion was that they could not survive on their remaining service area. That decision left most of the county without ambulance service.

State and county officials met and divided up the areas with no service and asked existing ambulance companies to assume the coverage on a greater area. Ivins City previously only provided service to the City were now asked to cover Santa Clara City, Snow Canyon State Park, Shivwits-Paiute Indian Reservation, Gunlock State Park, Gunlock, Motoqua and the western half of unincorporated Washington County. The entire service area of our coverage is 460.9 square miles.

Ivins City currently has 11 EMTs, 28 Advanced EMTs and 7 Paramedics.

Ivins City currently operates three ambulances:

Medic 121	2000 Ford 350	72,234 Miles
Medic 122	1992 Ford Type III	77,798 Miles
Medic 123	2000 International	131,575 Miles

In the past 6 years Ivins City has paid \$46,629.51 in repairs and maintenance on Medic 123 and it is mostly inoperable. This equipment is quickly wearing out and needs to be replaced.

**AGENDA ITEM # VIII-C. (Continued)**

The Ivins City EMS response area includes:

- Veteran’s Affairs Nursing Home which is a 108 bed facility
- Biggest. Loser resort (60 guests and 100 staff members)
- Red Mountain Spa (90 guests and 90 staff members)
- Snow Canyon Clinic (200 patients per day)
- Tuacahn Amphitheatre (230,000 visitors per year)
- Tuacahn High School (400 students and staff)
- Lava Ridge Intermediate School (843 students 80 staff Members)
- Vista Charter School (795 students and 88 staff members)
- Arrowhead Elementary School (688 students and 45 staff members)
- Red Mountain Elementary School (492 students and 45 staff members)
- Santa Clara Elementary School (450 students and 50 staff members)

Call Volumes are as follows:

<b>Year</b>	<b>Responses</b>	<b>Responses Per Day</b>
<b>2010</b>	<b>442</b>	<b>1.2</b>
<b>2011</b>	<b>532</b>	<b>1.4</b>
<b>2012</b>	<b>531</b>	<b>1.4</b>
<b>2013*</b>	<b>165</b>	<b>1.5</b>
<b>2013**</b>	<b>298</b>	<b>1.9</b>

\* Prior to the new response area  
 \*\* After the new response area

Although ambulance service is a fee based service, smaller area and rural areas must subsidize the service. For many years now Ivins City has subsidized the service for about two thirds of the costs. With the changes that have occurred with closing of Dixie Ambulance Service we are covering a much larger area of relatively sparsely populated area. We do not anticipate that the ambulance service will be able to cover costs even with a greater area of coverage.

We believe that without this grant we will not be able to provide full service to not only our City but to the expanded area that we currently must cover. Our current ambulances have reliability problems. Borrowing money at the expense of Ivins residents to cover a much wider area is not equitable.

We therefore request that the Permanent Impact Board Fund grant to the Ivins City \$132,000 to purchase a much needed ambulance from Rocky Mountain Ambulance Sales & Service, Inc.

**APPLICATION REVIEW**

The Steering Committee of the Five County Association of Governments, at its regularly scheduled meeting held on Wednesday, October 9, 2013, reviewed the “Ivins City - Ambulance Project” application to the Utah Permanent Community Impact Fund Board and voted to:

- SUPPORT THIS APPLICATION.
- REMAIN NEUTRAL REGARDING THIS APPLICATION.
- NOT SUPPORT THIS APPLICATION.

The project described above  does  does not conform with the policy or planning of the multi-jurisdictional area it directly impacts.

Additional information  is  is not needed.

\_\_\_\_\_  
Bryan D. Thriot, Executive Director

\_\_\_\_\_  
9 October 2013

\_\_\_\_\_  
Date

## AGENDA ITEM # VIII-C. (Continued)



# ROCKY MOUNTAIN

Ambulance Sales & Service, Inc.

J. Royce Barton, Dealer

### IVINS

Chassis: 2013 Ford F-350 2-wheel drive / or Chevrolet 3500  
FOB - Ivins, Utah

Cab flooring - black rubber mat

Box Size 153 x 95 x 72 Wheeled Coach ambulance conversion

Full height walk-through

Heat/AC Pure Air system 3-filters: dust / charcoal / hepa filter

Wheel Covers, Phoenix installed

Build to KKK 1822-E federal specifications

Battery Sw, 5 min Timer, F1, Fig 5B, Batt under Hood - activated thru

OEM ignition switch timer function upon ignition off.

Momentary rocker sw on dr. side of cab console as shutoff and reactivate

Console center walk-through --

Door sliding, bulkhead

install bifold door on CB door so we can move att seat back close to bh

Aisle space per KKK

Headroom increased to 72 inches -

Exterior compartments - Polyurethane coating - dark gray

#### BODY Style:

A standard

B1, storage compartment

B2, back board compartment

D - spare tire storage

E, storage & retrieval for sharps & waste (under action area)

F, O2 tank storage area

Cmpt F-- with dog leg for stair chair storage

Fuel Fill Housing, Cast

Divider in backboard compartment - B2

Shelf 1) in right front compartment A UPPER AREA

Shelf 1) additional in right front compartment A LOWER AREA

shelf, Fixed w/ bio waste -in exterior compartment E

Shelf, 1) additional in exterior compartment E

Door windows: curbside door upper slider -Privacy Glass

Door windows/ rear upper fixed - Privacy glass

Window over Squad bench / Privacy glass 12" x 36"

Door handles - patient entry & compartment - Trimark with safe pass system

Switch, Stealth - hidden in grille to unlock cab doors only

Cast, Grabber grabber style for rear entry doors

Socket & plunger hold open /cmpt. A, B2 & F for full compartment access

Hold open gas strut, Exterior compartment B1 & E

Door panels upper & lower curbside / rear doors upper & lower stainless

Chevron reflectivve tape on center door panels

Fender flares / rubber

Rear bumper -- step with flip up center / with gator grip & LED lights

Running boards with Gator Grip

Skirtrails, Extruded rubber with reflective tape

Skirtrail reflective tape: color white - red - yellow -- red/white

Stone guard front diamond Plate 28"

Kickplate, rear with recess for license plate and & 3 tail lights

Bracket, spare tire mounting in compartment D

License plate holder, Cast

Mud flaps / rear

Mud flaps / front

## AGENDA ITEM # VIII-C. (Continued)

### PAINT:

White - AFTER market striping (see below)

Roof star installed

KKK Label package Installed

Coax cable 1) base antenna mount w/ coax Attendant seat

Coax cable 1) base antenna mount w/ coax Circuit board

Coax cable 1) base antenna mount w/ coax Circuit board

Diode protection 30 amp service for 12 volt outlets

Outlets: 12 volt Cigarette style in action area

Outlets: 12 volt Cigarette style 1) in right front cabinet

Super Auto Eject 20 amp, w/ interrupter

Shoreline indicator light - located near shoreline inlet

Outlet, 110 duplex 1) in Action Area 1) in Right front cabinet

Outlet 110 duplex 1) in telemetry area

Outlet, 110 duplex 1) curbside at foot of squad bench

Outlet, 110 duplex 1) R/F cabinet down low wall #2

Inverter / Battery Charger, Vanner 20-1050 CUL-DC

Meter, Analog, Volts, In dash

Switch, Emergency Master, Non sequencer

Siren speakers, Cast SAD/P4314 thru front bumper

Siren, Whelen, WS-295-SLSA1, standard

Siren switch thru horn ring

Switch, 12 v rocker (for front lights (no light bar) label "light bar  
for front red warning lights

Alarm, Backup, Auto Reset cutoff

### Front warning lights:

#### 900 SUPER LED LIGHTS- Front in lieu of light bar - (seven total)

##### 900 Super LED =internal flasher as follows:

2) On front upper outer corners / RED / std flash

2) on each side of module 4 -total here )

2) on rear / thru rear door windows UPPER area

(WIRE PRIMARY/SECONDARY)

##### 900 Super LED - internal flasher as follows:

2) FRONT --on either side of center clear (4 total here) -

WIRE: ACTION SCAN THRU LIGHTS INTERNAL FLASHER

2) on rear upper outer corners / RED - action scan

Light 900 super LED 900's Amber LENS 1 center rear - thru internal flasher

Light 900 Super LED - CLEAR 1 Center front- thru internal flasher

Whelen M4 series Red LED flashing light

( 2) front intersection lights

(2) front grille lights

Primary only - thru internal flasher

Whelen M4 series Red LED flashing light

(1) interior of curbside entry door - upper outer corner

wire ignition HOT to flash when door is opened -

##### WIG WAG LIGHTS front of vehicle:

Light, M4 CC, LED, Whelen, CLEAR Lens

Light on driver side to alternate flash with light on passenger side

Switch: Headlight flashers

Corner Cap lights: LED style with flashing option

High intensity - flashers Low intensity - marker lights

Light, clearance Red LED, on rear above rear doors

Scene Light, Halogen, Whelen, 900 H, CLR, 8-32 degree

2) each side as scene lights

Load Light, Halogen, Whelen, 900, CLR, 8-32 degree

2) on rear as load lights

Scene lights, Curbside to activate with c/s door

## **AGENDA ITEM # VIII-C. (Continued)**

**Rear Scene Lts** 1) each side to activate w/ reverse gear  
Automatic secondary park/neutral switch  
Light, License tag (2) trucklite # 15205 LED  
Taillights, Whelen, LED stop/tail, halogen backup WC logo  
Tail lights / Trucklite, Red, Clear, Amber, LED in rear kickplate  
Turn signal guide arrow 6 LED / front below 9 LED red lights  
Flange, 6E series, (2) each for turn arrows on front of module

### **MODULE INTERIOR:**

Headliner / module FLAT PVC  
Interior Lights / Whelen 8048 LED --  
Light, Stepwell, LED, Whelen #TOCACCCR, 2in, ILOS  
Light, Xantech, 5-inch in Action area  
Spotlight, handheld, 100,000 CP  
LED< **Compartment** lights - Whelen 2 inch - in lieu of std / (7)  
Timer momentary switch 15 minute, constant hot, std with 5 min battery switch  
to operate: curbside domes on HIGH - with separate circuit

### **Clock, Intellitec 000-00775-100**

Suction Pump, for suction system 1) port in action area  
**Insulation - fiberglass, unfaced**  
Grabrail, overhead -- run entire length of vehicle  
Handle L-style on entry doors  
Rack, O2 - Versatile, M - or H tank  
Ratchet straps for O2 tank retention  
O2 system, LF (2) O2 and 1) Vac port in action area, 1) O2 curbside

Regulator, oxygen cylinder, preset 50 psi installed

### **Suction Containers:**

Regulator/Holder SSCOR 22000, STD model ( stainless steel bracket)  
Cot Mount - Stryker Dual position for Stryker Cot  
Cot Mounts, Stryker, Mods, Rear Safety Hook Installed  
IV hooks: 2 Perko clip with straps / 1) curbside 1) streetside  
Seat belt-strap, across backboard compartment opening  
Seat belt-strap, across Stair Chair opening

### **INTERIOR COLORS:**

Mica, Gray Pampass non gloss over pewter brush  
Flooring - brushed pewter

### **ATTENDANT SEAT:**

Seat, Attendant, EVS, with CHILD seat -- Gunmetal #1880CB, STD model  
Door, diamond plate, EVS seat base  
Upholstery, Seamless, Gunmetal, With Bio Waste -- NO post & wheel cups  
Glove box holder over CS door- hold 3 glove boxes with gray lexan  
hinged / top w/ holes for access to gloves.  
RF cabinet 2 doors upper - with lexan inserts (latch lever with key)  
RF cabinet 1 door lower - wood (latch lever no key)  
C-pull handle for RF cabinet doors  
Plunger rollers for RF cabinet doors  
Door, Sliding, Bulkhead, Full Hgt Walk-Thru w/ sliding Lexan window  
Lock, KV 70 on cabinet L1  
C-Pull handle for L1 cabinet  
Latch, Lever NO key for EVS seat base door  
**Squad Bench with Bio waste (sharps & waste drop)**  
Lid, Squad bench, SINGLE with sharps and waste drop  
Red plexi door over both bio waste openings  
Handle, Paddle latch on squad bench  
Gas strut hold open on squad bench - minimum 60#  
Cabinet H standard  
Cabinet M 1/2 Height FULL Depth  
Cabinet O Full height

**AGENDA ITEM # VIII-C. (Continued)**

CPR Side seat - FIXED back

Cabinet J, K, combined into one cabinet

fixed center divider with 1) adjustable shelf on each side of center divider

**Cabinet L 1 Angled, L2 remaining area**

Cabinet L1 fixed shelf about half way up

L2 one cabinet with fixed center divider and 1) shelf each side

Cabinet L1 door KV 70 lock

Cabinet H, M, O - Gray Lexan sliding doors

**bio waste/Action Area** poured acrylic gray , rounded corners

Action area & Telemetry work surface poured acrylic /gray

**Shelf: Interior cabinets Adjustable:**

(1) Cabinet H

(1) Cabinet O

(2) Cabinet J/K 1 on each side of fixed divider

(2) L2 one on each side of fixed divider

Shelf track, cabinets - Wheeled coach standard

Cabinet J/K - Gray lexan slider

Cabinet O Gray lexan slider

Cabinet L2 Gray lexan slider

Cabinet L1 Wood door hinged left

Divider, vertical streetside upper cabinet J/K and L2

Fire ext. 5 lb. ABC, shipped loose

Spare tire shipped Loose

Decal package, DOT - star of life package

**After Market Installation @ Rocky Mountain Ambulance**

Custom Lettering

**3-M striping Skirtline and Center Belt W/ QRS**

50 PSI for large O2

2-each Flowmeters w/ green tips

4-Additional SSCOR canisters / LOOSE

**Total: \$132,000.00**

**Price is pending 2013 chassis availability**

**NO taxes are included**

**Terms: Net due upon delivery with signed acceptance**

**EXAMPLES OF AMBULANCE FOR IVINS CITY**



**AGENDA ITEM # VIII-C. (Continued)**





**AGENDA ITEM # VIII-C. (Continued)**

**Five County Association of Governments**

1070 West 1600 South, Building B  
St. George, Utah 84770

Fax (435) 673-3540



**SOUTHWEST UTAH**

Post Office Box 1550  
St. George, Utah 84771

Office (435) 673-3548

**PERMANENT COMMUNITY IMPACT FUND BOARD APPLICATION  
STEERING COMMITTEE REVIEW**

**Project Title:**

Big Water - Road Rehabilitation and Drainage Project

Application Reviewed by Five County AOG Steering Committee: October 9, 2013

**Applicant Identification, Address:**

Ivins City  
55 N. Main Street  
Ivins, UT 84738

**Funding:**

CIB Loan 10 years @ 1.5%	\$ 200,000.00
CIB Grant	\$ 185,000.00
<u>Applicant Cash</u>	<u>\$ 250,160.00</u>
<b>TOTAL PROJECT</b>	<b>\$ 635,160.00</b>

**Project Description as provided by Applicant:**

Big Water Town, located near the Arizona border just off of Highway 89 in south eastern Kane County, Utah is requesting financial assistance from the Community Impact Board (CIB) program in order to rehabilitate the roads and solve several drainage issues within the Town.

The majority of the roadways in Town had not been installed or improved when developed; instead the responsibility of any improvements to the roadways has fallen on the Town. Therefore, the Town's roadways had been originally graded out and chip sealed for the first time approximately 10 years ago. This project was funded by a loan, and the loan has been repaid out of the B&C road funds over the past 10 years. This loan has been fully repaid.

The chip seal is reaching the end of its recommended design life, and although the condition of the original chip seal is in relatively good condition, the Town would like to have the roadways in Town rehabilitated with another layer of chip seal. Additionally, a relatively short section of roadway with in the Town was never chip sealed to the full width. As part of this project, this section of roadway would be graded out to the full width and the new section would receive a double chip seal to match the existing portion of the roadway. This project will affect the entire population of Big Water, approximately 475 people, since all roads currently managed by the Town will be included in this project. All the roadways are approximately 20 feet in width and do not include any other improvements such as curb, gutter or sidewalk. See Attachment #2 for the roadways anticipated to receive chip seal treatment. Approximately 49,410 lineal feet of roadway will receive a single chip seal and approximately 1,970 lineal feet of roadway will receive a double chip seal on a half portion of the roadway.

**BEAVER**

**GARFIELD**

**IRON**

**KANE**

**WASHINGTON**

**AGENDA ITEM # VIII-C. (Continued)**

The second portion of this project is related to storm water and drainage issues as they pertain to the roadways in Town. To handle drainage along the roadways, borrow ditches and culverts have been installed in several locations, which have alleviated some issues, but problems have arisen over the past 10 years that will need to be addressed

to improve the life and quality of any future roadway rehabilitations and improvements. Several of the issues associated with drainage in the Town can be summarized into three main categories. First, in a couple of locations minor washes entering the Town are not properly diverted through, around, or under private property and roadways. Second, several intersections and portions of roadway in Town are local low spots, and in many cases causing the edge of the roadway to deteriorate and be degraded as well as causing maintenance issues with silt and gravel being deposited. See Attachment #2 for exhibits showing the specific locations and brief descriptions of the drainage issues anticipated to be resolved as part of this project.

By rehabilitating and solving these several drainage issues the Town anticipates a design life for their roadways equaling or exceeding an additional 10 years. The funds currently available to the Town for these improvements is limited, therefore, if the Town is unable to obtain the financial assistance requested, the existing problems will not be addressed in a timely manner. As the design life for the roadway approaches and the roadway continues to deteriorate, the fear is that the increasing cost to maintain the roads will cause any rehabilitation efforts to be an obtainable goal as future revenues will be consumed by maintenance rather than set aside for full rehabilitation. This moment in time represents an opportunity where the Town has a significant portion of funds to contribute, a time where previous loans have been repaid, and a time where a rehabilitation project will prove most beneficial since immediate conditions are considered prime for rehabilitation efforts.

**APPLICATION REVIEW**

The Steering Committee of the Five County Association of Governments, at its regularly scheduled meeting held on Wednesday, October 9, 2013, reviewed the "*Big Water - Road Rehabilitation and Drainage Project*" application to the Utah Permanent Community Impact Fund Board and voted to:

- SUPPORT THIS APPLICATION.
- REMAIN NEUTRAL REGARDING THIS APPLICATION.
- NOT SUPPORT THIS APPLICATION.

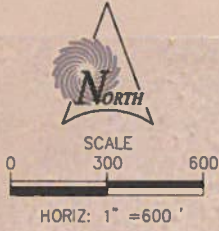
The project described above  does  does not conform with the policy or planning of the multi-jurisdictional area it directly impacts.

Additional information  is  is not needed.


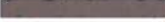



\_\_\_\_\_  
Bryan D. Thiriot, Executive Director

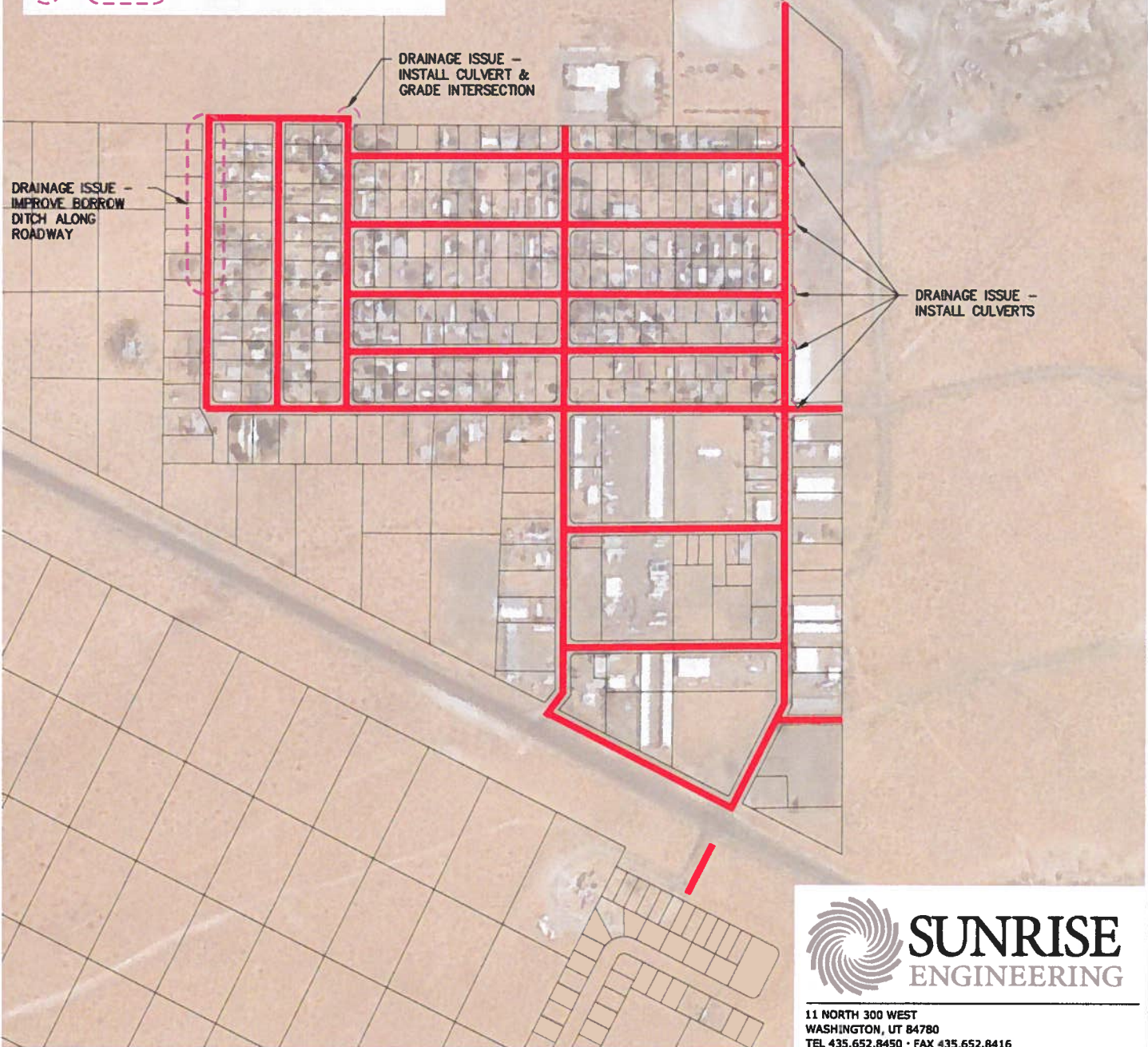
\_\_\_\_\_  
9 October 2013  
Date

# EXHIBIT #3 PROPOSED IMPROVEMENTS




**LEGEND**

-  CHIP SEAL EXISTING ROADS
-  ASPHALT W/ CURB, GUTTER & SIDEWALK
-  ASPHALT
-  DOUBLE CHIP ROADWAY
-  DRAINAGE ISSUE



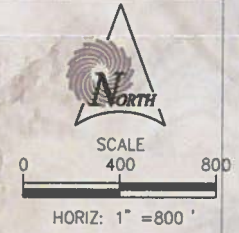
P:\Big Water\Roads\0000 Roadway Inventory & Recommendations\Big Water-existing & future roads-8.5X11.dwg Sep 27, 2013 11:18am dlee.grd



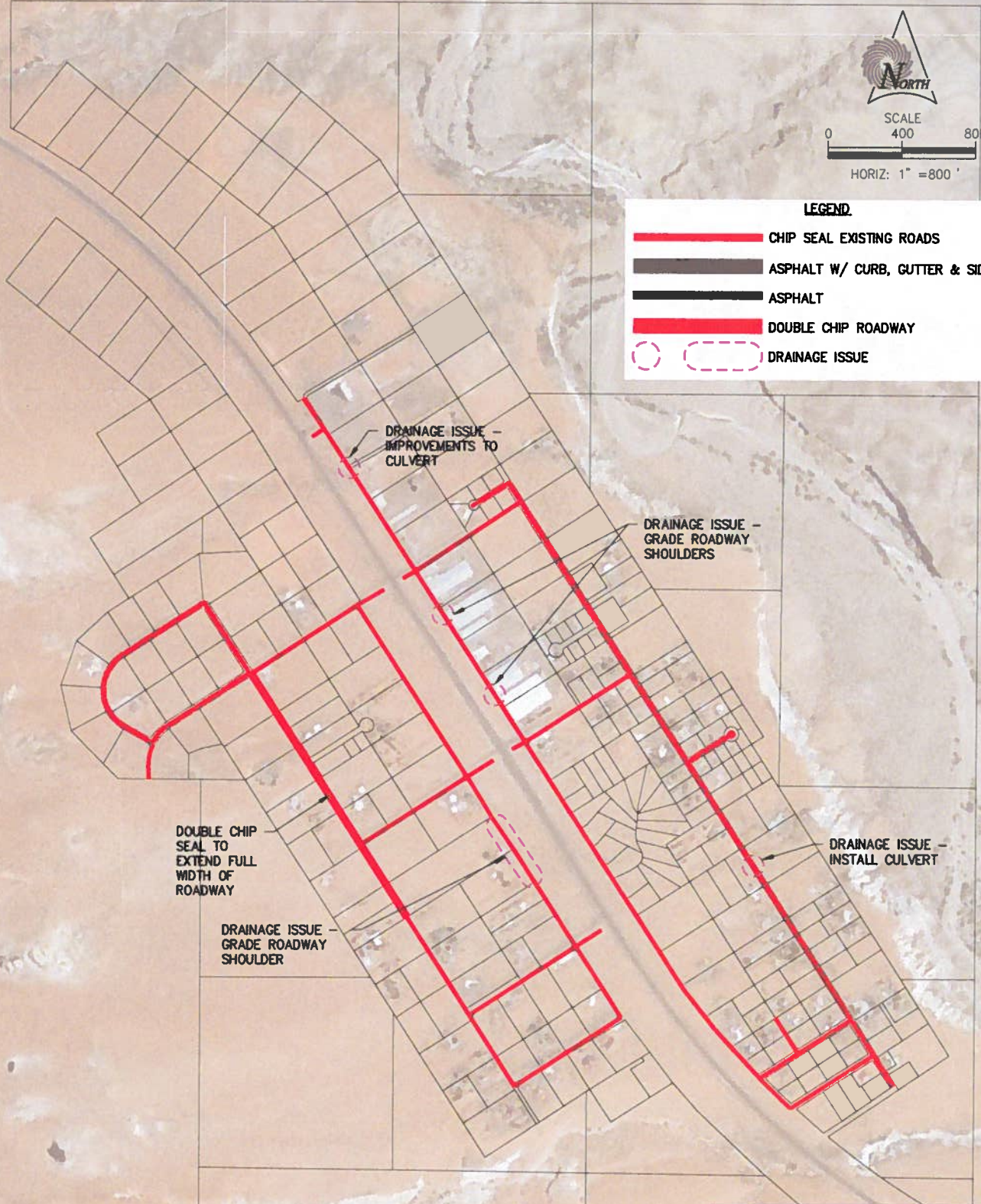
**SUNRISE  
ENGINEERING**

11 NORTH 300 WEST  
WASHINGTON, UT 84780  
TEL 435.652.8450 • FAX 435.652.8416  
[www.sunrise-eng.com](http://www.sunrise-eng.com)

# EXHIBIT #4 PROPOSED IMPROVEMENTS



LEGEND	
	CHIP SEAL EXISTING ROADS
	ASPHALT W/ CURB, GUTTER & SIDEWALK
	ASPHALT
	DOUBLE CHIP ROADWAY
	DRAINAGE ISSUE



P:\Big Water\Roads\0000\_Roadway inventory & Recommendations\Big Water-existing & future roads\_8.5X11.dwg Sep 27, 2013 11:28am drcenard

**SUNRISE**  
ENGINEERING

11 NORTH 300 WEST  
WASHINGTON, UT 84780  
TEL 435.652.8450 • FAX 435.652.8416  
[www.sunrise-eng.com](http://www.sunrise-eng.com)