

Community Health Assessment
Your Community. Your Health. Your Voice.

Purpose of CHA

- Describe the health status of the population
- Identify areas for health improvement
- Determine factors that contribute to health issues
- Identify assets & resources that can be mobilized to improve population health

Essential Ingredients

- Community Engagement
- Collaborative Participation
- "Community Voice"

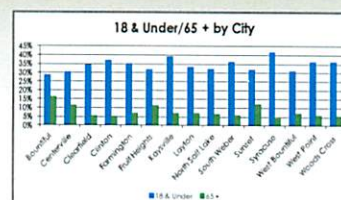


Health Status Assessment

- Health indicators/measures
- Snapshot in time
- Comprehensive, broad scope
- Some depth
- U.S., Utah, County, Small Areas, City, Census Tract
- Age-adjusted to make comparisons
- Healthy People 2020 (HP2020) Targets
- Establish baselines
- Assessment of how we are doing, not what we are doing

Health Status Data

- County Description
- Demographic Profile (population size, age, race, etc.)
- Social & Economic Characteristics (workforce, cost of living, education, religion, politics, special populations)



Race/Ethnicity Comparisons

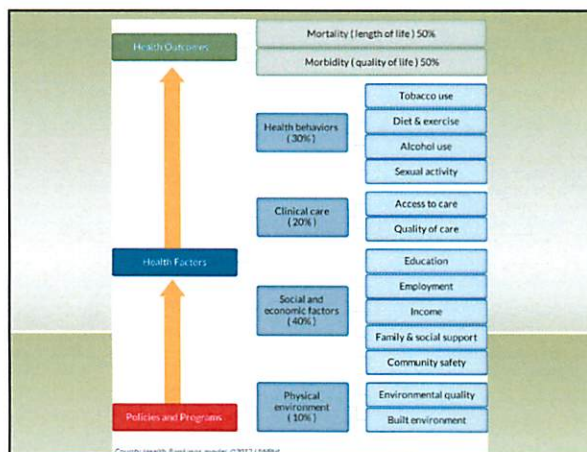
White
 Hispanic/Latino
 Black/African American
 American Indian/Alaska Native
 Asian
 Native Hawaiian/Other Pacific Islander
 Other



County Health Rankings & Roadmaps
A healthier future, county by county

- Model for organizing health indicators
- Counties in every state are ranked according to 30 health measures, county to county comparisons
- National Benchmarks – 90th percentile, only 10% are better
- 2013 is the 4th year of the County Health Rankings
- How long & how well people live depends on multiple factors beyond access to medical care
- Programs & policies have an impact on factors that determine the health outcomes for communities
- Many factors that, if improved, can help make communities healthier places to live, learn, work & play

Collaboration between the Robert Wood Johnson Foundation & the University of Wisconsin Population Health Institute
<http://www.countyhealthrankings.org>



Data Sources

- County Health Rankings
- 2012 Utah Statewide Health Status Report
- Community Health Needs Assessment Tool
- IBIS-PH
- U.S. Census Bureau's State & County Quick Facts
- More than 50 other state, department or program health status reports & needs assessments

County Health Rankings 2013

- Health Outcomes
 - Mortality: how long we live
 - Morbidity: how good we feel
- Davis County Ranked 6th
- Room for improvement

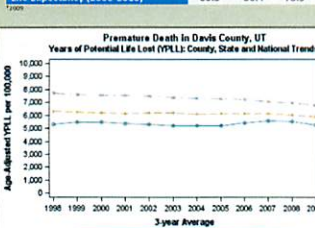
Rank	Health Outcomes
1	Morgan
2	Cache
3	Utah
4	Weber
5	Summit
6	Davis
7	Wayne
8	Washington
9	Box Elder
10	Millard
11	Salt Lake
12	Garfield
13	Iron
14	San Juan
15	Sepulpa
16	Beaver
17	Town
18	Wahatchee
19	Wasatch
20	Platte
21	Grand
22	Emery
23	Utah
24	Utah
25	Utah
26	Utah
27	Utah

Not ranked: Ogden, Rich

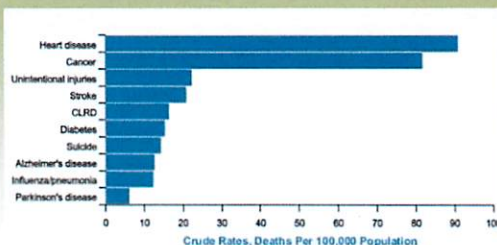
Mortality

- How long we live
- What's Killing us
 - Premature Death
 - Death Rate
 - Life Expectancy
 - Leading Causes of Death
 - Chronic Disease Death Rates
 - Injury Death Rates
 - Infant/Child Mortality
- Top 10% (best) of all counties in the U.S for premature death

Mortality Measures	Davis	Utah	U.S.
Premature Death, Years of Potential Life Lost Before Age 75 (2008-2010)	5,264	5,869	6,811
Death Rate, per 100,000 (2010)	590.9	674.7	792.6
Life Expectancy (2006-2010)	80.5	80.4	78.5*



Leading Causes of Death



Chronic Disease Deaths

Chronic Disease Death Rates	Davis	Utah
Coronary Heart Disease Deaths (2006-2010)	72.5	70.1
Stroke Deaths (2006-2010)	30.9	36.1
Prostate Cancer Deaths (2006-2010)	24	24.3
Alzheimer's Disease Deaths (2008-2010)	22.6	19.6
Diabetes Deaths, Underlying Cause* (2009-2011)	22.1	23.5
Breast Cancer Deaths (2008-2010)	20.3	20.2
Lung Cancer Deaths (2006-2010)	16	20.6
Colorectal Cancer Deaths (2007-2010)	10.5	11.6
Melanoma of the Skin Deaths (2005-2010)	2.1	—

Source: Davis County Community Snapshot, UDOH, Age-adjusted per 100,000. * Source: IBIS, UDOH

- Meeting Healthy People 2020 targets for all chronic disease death rates except prostate cancer (21.2)

Injury Deaths (unintentional & intentional)

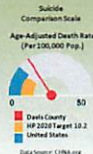
Injury Deaths	Davis	Utah	U.S.
Unintentional Injury Deaths (2007-2009)	29.6	34.3	37.2
Poisoning Deaths* (2006-2009)	17.4	18.8	13.1
Suicide* (2006-2009)	15.1	15.8	11.4
Motor Vehicle Traffic Crash Deaths (2008-2010)	6.8	9.2	11.1

Age-adjusted per 100,000. *Not meeting Healthy People 2020 Target 13.1 for Poisonings & 10.2 for Suicide.

- Some categories overlap, not mutually exclusive
- Lowest unintentional injury & motor vehicle crash deaths rates in Utah
- Above U.S. average & not meeting HP2020 targets for poisoning & suicide death rates

Suicide

- 14.68 deaths per 100,000 population
- Not meeting HP2020 target: 10.2
- 7th leading cause of death
- Males have higher suicide rate
- Rates not significantly different by small area
- 9.5% of students had considered suicide (2011)



Morbidity

- How we feel
- What's making us sick
 - Health Related Quality of Life
 - Birth Outcomes
 - Hospitalizations
 - Chronic Disease
 - Cancer Incidence
 - Obesity
 - Communicable Diseases
 - Mental Health
 - Oral Health

Health Related Quality of Life

Health Related Quality of Life (2005-2011)	Davis	Utah	National Benchmark*
Poor or Fair Health	10%	13%	10%
Poor Physical Health Days	3.2	3.4	2.6
Poor Mental Health (2011)	13.8%	15.8%	—
Poor Mental Health Days	3	3.2	2.3

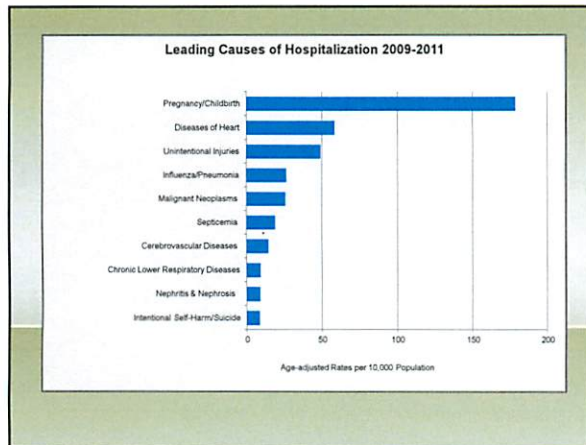
*Age adjusted. *Percentages only, only 10% and better

- 10% of adults rate their health "fair" or "poor"
- Average of 3.2 days when physical health was not good
- 13.8% reported 7 or more days when mental health was not good
- Average 3 days when mental health was not good

Birth Outcomes

Birth Outcomes	Davis	Utah	U.S.
Birth Rates, # of Births per 1,000 Residents (2010)	18.6	18.3	13.5
Low Birth Weight (2008-2010)	6.8%	6.9%	8.2%
Gestational Diabetes (2009-2010)	2.8%	3.4%	—
Births from Unintended Pregnancies (2008-2010)	28.0%	33.4%	51.0%
Adolescent Births, Rate per 1,000 Adolescent Females Ages 15-19 (2008-2010)	20.2	23.1	39.1

- Utah has highest birth rate in the U.S., Davis County is similar to the state average
- Davis County is better than the national average for low birth weight, gestational diabetes, unintended pregnancies & adolescent births



Chronic Disease Prevalence

Chronic Disease Prevalence	Davis	Utah	U.S.
High Blood Cholesterol*	27.3%	25.4%	28.4%
Hypertension*	25.4%	25.6%	30.0%
Arthritis Prevalence*	22.0%	21.8%	23.4%
Asthma: Adult Prevalence*	10.2%	8.7%	8.7%
Asthma: Adolescent Prevalence (Grades 6-12)	11.9%	12.1%	—
Asthma: Childhood Prevalence (0-17)	7.1%	7.1%	8.4%
Diabetes: Adult Prevalence*	6.5%	7.5%	8.8%
Diabetes: Adolescent Prevalence (Grades 6-12)	1.04%	0.97%	—
Heart Disease Prevalence	2.3%	2.7%	4.3%

*Age adjusted

- Higher rate of adult asthma (10.2%) than Utah & U.S.
- 6.5% of adults with diabetes
- Utah lowest diabetes rate in U.S.
- Alzheimer's prevalence ?

Cancer Incidence

Cancer Incidence	Davis	Utah	U.S.
Prostate Cancer Incidence	195.4	169.8	151.4
Breast Cancer Incidence	110.6	108	122
Colon & Rectum Cancer Incidence	37.3	35	40.2
Lung Cancer Incidence	20.9	27.7	67.2
Brain & Central Nervous System Cancer*	6.9	6.4	—
Leukemia*	4.3	4.9	—
Cervical Cancer Incidence	4.1	5.2	8

Age-adjusted average per 100,000 population, 2009-2009. *2008-2007

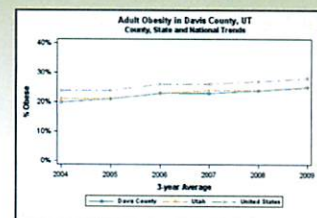


- 1/3 lung cancer incidence of U.S.
- High prostate cancer incidence compared to Utah & U.S., not a good explanation for the high rate

Adult Obesity

Adult Obesity & Overweight Prevalence	Davis	Utah	U.S.
Obesity (18+)	24.9%	25.1%	27.4%
Obese or Overweight (18+)	63.1%	60.3%	62.9%

- 25% of adults are obese & 63% at an unhealthy weight
- Meeting Healthy People 2020 target & measures in the top 10% (best) of all counties in U.S.
- 25% of residents at risk for serious & costly health conditions



Childhood Obesity

Obesity & Overweight Prevalence	Davis	Utah	U.S.
Adolescent Obesity (Grades 8,10,12)	5.1%	7.5%	13.0%
Childhood Overweight & Obesity (Ages 10-17)	—	22.1%	31.3%
Grade School Obesity (Ages 6-11)	—	9.4%	18%-21.2%
Childhood Obesity (WIC Clients, Age 5 & Under)	6.1%	7.8%	14.0%

Age adjusted Average per 100,000 population

- Approximately 5% adolescents are obese
- Utah has lowest rate of overweight & obesity in young people ages 10-17 at 22.1% compared to U.S. 31.3%
- 9.4% of Utah elementary school students are obese
- 20.8% of elementary school students were at an unhealthy weight (obese/overweight combined)

Communicable Diseases

Communicable Diseases 2011	Rate per 100,000 Population		
	Davis	Utah	U.S.
Sexually Transmitted Diseases			
Chlamydia	237.0	251.3	457.1
Gonorrhea	5.8	9.8	104.1
Syphilis (All Stages)	3.5	2.4	14.9
HIV/AIDS Incidence	1.3	3.3	16.1*
HIV Prevalence	53.9	92.8	271.0
Vaccine Preventable Diseases			
Pertussis (2012 Data)	44.0	54.8	13.4
Hospitalized Influenza	13.8	17.4	—
Enteric Diseases			
Campylobacteriosis	10.6	14.4	—
Cryptosporidiosis	6.1	2.3	3.0
Giardiasis	7.4	9.2	5.5
Shiga Toxin-Producing E. Coli Infection**	3.9	6.3	2.0
Salmonellosis	12.5	12.0	16.8
Others			
Hepatitis C (Acute & Chronic)	48.1	40.2	—
Tuberculosis (Active Disease)	0.3	1.2	3.4
West Nile Virus	0.3	0.1	0.2
Rabies - Animal	0.0	0.3	1.4

Source: CDC & IDDDH *2010 **Not meeting Healthy People 2010 target 0.6

Mental Health Conditions

Mental Health Condition Prevalence	Davis	Utah	U.S.
Depressive Disorder, Adult (Doctor Diagnosed)	21.2%	21.9%	16.7%
Depressive Symptoms: Adolescents	34.3%	34.6%	—
Autism Spectrum Disorders (Per 1,000, Age 8)	—	21.2%	11.3%
Children with Emotional, Behavioral, or Developmental Conditions (Ages 2-17)	—	8.7%	11.3%
Confusion/Memory Loss (Age 60+)	16.8%	16.7%	—

- Mental health incidence & prevalence rates are not readily available
- Depressive disorders are higher than U.S.
- Depression is a leading risk factor for students
- Most common mental health diagnosis in DBH adults: anxiety, mood disorder, depression, substance abuse
- Most common mental health diagnosis in DBH teens: attention deficit, anxiety, mood disorder, neglect/abuse

County Health Rankings 2013

- Health Factors: how well we live
- Behaviors, Clinical Care, Social & Economic & Physical Environment
- Davis County Ranked 4th
- County strengths are: clinical care & social/economic factors

Rank	Health Factors
1	Summit
2	Morgan
3	Cedar
4	Davis
5	Utah
6	Wasatch
7	New Elder
8	Washington
9	Kane
10	Salt Lake
11	Carbon
12	Wasatch
13	Wayne
14	Sevier
15	Wilder
16	Emery
17	Millard
18	Township
19	Utah
20	Garfield
21	Sanpete
22	Beaver
23	Duchesne
24	Utah
25	Grand
26	Piute
27	San Juan

Not ranked: Cope, Rich

Health Behaviors

- Tobacco, Alcohol & Drug Use
- Healthy Eating
- Physical Activity
- Safety
- Preventive Care

Tobacco, Alcohol & Drug Use

Tobacco, Alcohol & Drug Use	Davis	Utah	U.S.
Adult Smoking (2011)	9.5%	11.3%	20.4%
Youth Smoking, Grades 9-12 (2011)	4.4%	5.2%	18.1%
Pregnant Women Smoking (2010)	4.1%	6.0%	13.0%
Illegal Sales of Tobacco to Underage Buyers (FY 2012)	4.0%	5.0%	8.5%
Binge Drinking, Adults (2011)	9.0%	11.2%	18.3%
Youth Alcohol Use, Grades 8, 10, 12 (2011)	10.3%	11.2%	38.7%
Illegal Sales of Alcohol to Underage Buyers (FY 2011)	8.2%	7.7%	—
Youth Marijuana Use, Grades 8, 10, 12 (2011)	5.8%	7.0%	23.1%

2012 Primary Substance of Abuse at Admission Davis Behavioral Health Clients		
Substance	# of Clients	% of Clients
Methamphetamine	247	29%
Marijuana/Hashish	192	23%
Alcohol	182	21%
Heroin	106	13%

Youth Alcohol Use

Youth Alcohol Use in Davis County by Grade	6th	8th	10th	12th
Alcohol Use (Had Alcoholic Beverage in the Past 30 Days)	1.0%	5.4%	9.2%	17.5%
Binge Drinking (5+ Drinks in a Row in the Past 2 Weeks)	1.0%	4.6%	6.9%	13.0%

Source: Prevention Needs Assessment Survey, 2011

- Most common substance used by young people
- Most common place to drink is their home or someone else's home
- 6.8% of students reported they have been drunk or high at school
- 6.8% reported riding in a car with a driver who had been drinking

Healthy Eating & Physical Activity

Healthy Eating	Davis	Utah	U.S.
Fruit Consumption, 2 or More Servings (2011)	34.0%	33.8%	30.7%
Veggie Consumption, 3 or More Servings (2011)	16.8%	16.6%	15.3%
Breastfeeding, Children 0-5 Who Were Ever Breastfed (2011-12)	—	88.9%	79.2%
Breastfeeding, WIC Children 0-5 Who Were Ever Breastfed (2010)	71.5%	77.7%	61.7%

Physical Activity	Davis	Utah	U.S.
Recommended Physical Activity Adults (2011)	57.7%	56.1%	51.4%
Recommended Physical Activity High Schoolers (2005-2011)	47.2%	48.9%	—
Physical Inactivity, Ages 20+ (2009)	16.0%	18.0%	25.0%
Activity Limitation, Ages 18+ (2010-2011)	21.6%	24.3%	23%

Safety

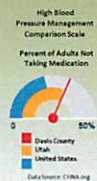
Safety	Davis	Utah	U.S.
Always Wear Seatbelt, Adults* (2011)	84.1%	82.2%	86.6%
Bicycle Helmet Use, All Ages (2008)	—	36.5%	20-25%
Sun Safety Practice, Adults** (2006, 2008, 2010)	64.1%	65.4%	—
Homes with No Smoking Rule (2012)	94.4%	93.2%	—
# of DUI Arrests (2011)	1,374	13,816	—

*Not meeting Healthy People 2020 Target of 92%. **Not meeting Healthy People 2020 Target of 80.1%

- Not meeting HP2020 targets for adult seatbelt use and sun safety practices

Preventive Care

Preventive Care	Davis	Utah	U.S.
Routine Medical Check Up in the Past 12 Months* (2011)	59.6%	57.2%	66.9%
Routine Dental Visit in the Past Year* (2010)	73.7%	68.7%	67.9%
Prenatal Care in the First Trimester of Pregnancy (2009-2011)	79.0%	73.1%	71%
High Blood Pressure Management (2006-2010)	31.6%	30.6%	21.7%



- Nearly 32% of adults are not taking blood pressure medication when needed

Clinical Care

- Access & Quality
 - Insurance Coverage
 - Cost of Healthcare
 - Healthcare Provider Ratios
 - Mental Health/Substance Abuse Treatment
 - Diabetes Management
 - Cancer Screening
 - Immunization & Vaccination
 - Preventable Hospital Stays

Health Insurance

Insurance Coverage	Davis	Utah	U.S.
Lack of Health Insurance Coverage, Under Age 65 (2010, Age-adjusted)	11.3%	21.5%	15.1%*
Uninsured Adults (2010)	14.0%	20.0%	—
Uninsured Children (2010)	8.0%	11.0%	—

*Research and Community Survey Database

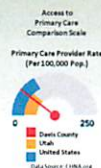
- Davis County leads all counties in the state with the lowest percentage of the population without health insurance coverage
- Insurance issues for those with insurance: cost is too high, underinsured, not offered by employer, high co-pays, waiting lists, restrictions, limited specialists, only out of county facilities, difficulty getting dental & vision coverage

Health Care Provider Ratios

Healthcare Provider Ratios (2011-2012)	Davis	Utah
Ratio of Primary Care Physicians per Population*	2,138:1	1,795:1
Ratio of Dentists per Population*	1,673:1	1,572:1
Ratio of Mental Health Providers per Population	6,035:1	2,994:1

*Data should not be compared with prior years due to changes in definition.

The optimal ratio of physicians to population depends on many factors, including population density, health status & health care utilization patterns of the population.



Mental Health & Substance Abuse Treatment

Davis Behavioral Health, Local Substance Abuse & Mental Health Provider Agency	Adults (18+)		Youth (Under Age 18)	
	# Need Treatment	Current Capacity	# Need Treatment	Current Capacity
Mental Health Treatment Needs vs. Clients Served	8,269	2,698	3,984	1,446
Substance Abuse Treatment Needs vs. Treatment Capacity	8,416	842	1,349	89

Source: Division of Substance Abuse and Mental Health Annual Report (2012)

The lack of availability or access to mental health & substance abuse treatment resources needs to be examined further, especially as it relates to documented community issues related to depression, suicide, & family conflict.

Screenings

Diabetes Management & Screening	Davis	Utah	U.S.
Diabetes Management, At Least 2 Hemoglobin A1C Tests in 12 Months, Adults (2009-2011)*	69.1%	67%	66%
Diabetic Screening, Medicare Enrollees (2010)	85%	84%	84%
Breast Cancer Screening	Davis	Utah	U.S.
Mammogram Within the Past Two Years, Age 40+ (2010-2011)**	66.5%	65.3%	74.9%
Mammography Screening, Medicare Enrollees Ages 67-69 (2010)	61%	61%	65.4%
Colorectal & Prostate Cancer Screening	Davis	Utah	U.S.
Colorectal Cancer Screening, Age 50+ (2010)***	68.0%	66.2%	66.5%
Prostate Cancer Screening, PSA Test, Men Aged 40+ (2010)	—	62.4%	64.2%

*Not meeting the Healthy People 2020 Target 71.1%. **Not meeting the Healthy People 2020 Target 81.1%. ***Not meeting the Healthy People 2020 Target 71%

- Not meeting HP2020 targets for Diabetes Management, Mammograms or Colorectal Cancer Screening
- Utah has one of the lowest mammogram screening rates in U.S.

Immunization

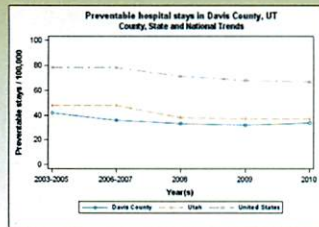
Immunizations (2011)	Davis	Utah	U.S.
Adults Receiving Influenza Vaccination in Past 12 Months, Ages 65+	60.6%	56.9%	24.9%
Adults Ever Receiving Pneumococcal Vaccination, Ages 65+	75.1%	70.4%	70.0%
Children Adequately Immunized at Kindergarten Entry**	93.9%	90.9%	95.2%
Children Adequately Immunized at 7th Grade Entry	94.1%	92.7%	—

*Not meeting the Healthy People 2020 Target 90%. **Not meeting the Healthy People 2020 Target 95%

- Adult influenza vaccination rate better than U.S.
- Not meeting HP 2020 targets for adult pneumococcal vaccination or immunizations at 7th grade entry
- Utah is in the bottom 10 states in the U.S. for percentage of fully immunized children by age 2
- 3% of DSD students have immunization exemptions

Hospital Quality

- Preventable Hospital Stays, Medicare, top 10% (best) in U.S.



- Utah Hospital Comparison Report is available with best, average, & below average ratings for specific procedures conducted in hospitals

Social & Economic

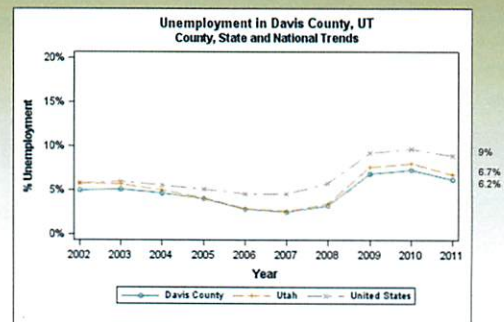
- Known as the social determinants of health
- May have the most influence on health
- Higher income & education equates to better health
 - Education
 - Employment
 - Income
 - Housing
 - Family & Social Support
 - Community Safety & Crime

When Compared to Utah/U.S.

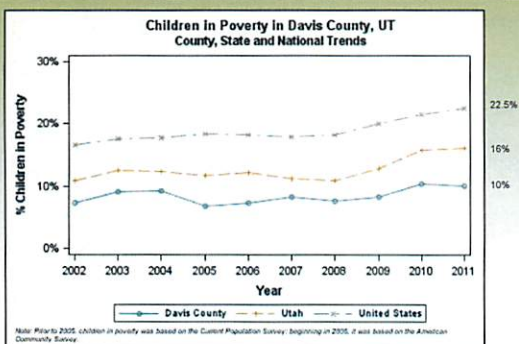
- More Educated
- Less Unemployment
- Less Poverty
- More Home Owners
- More Social Support
- Less Violent Crime

Social & economic disparities still exist within Davis County.

Unemployment



Children in Poverty



Social & Economic Concerns

- Workers without secure employment, temporary, part-time, not sufficient income to meet needs of family, no health insurance
- Families doubled up with friends or relatives because they cannot find or afford housing
- Family risk factors: parental attitudes favorable to anti-social behavior, poor family management & family conflict

Physical Environment

• Environmental Quality

- Air
- Drinking Water
- Recreation Water
- Food Safety
- Hazardous Waste



• Built Environment

- Food Environment
- Active Living Environment (Parks, Recreation, & Trails)

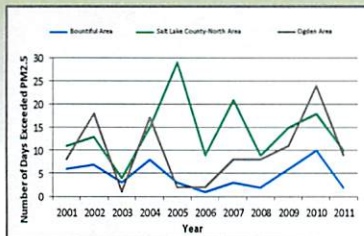
Air Quality

- Most of the time air quality is good
- Times when high levels of air pollution are among the worst in the nation
- Occur during winter temperature inversions



PM2.5

- Air Monitor - Bountiful/Viewmont
- PM2.5 Levels Over the National Ambient Air Quality Standard: Bountiful, Salt Lake County-North & Ogden Areas 2001-2011



EPA Nonattainment Area

- EPA nonattainment area because of high levels of PM2.5 over a 24 hour standard

Air Pollution		Davis
PM2.5 Average # of Days Over National Standard, Salt Lake County-North (2000-2011)		13
PM2.5 Average # of Days Over National Standard, Bountiful (2000-2011)		4.58
PM2.5 Average # of Days Over National Standard, Ogden (2000-2011)		9.25
Ozone 8 Hour Average # of Days Over National Standard, Bountiful (2001-2011)		7.91

Source: Utah Department of Health

- EPA Ozone Maintenance Area
- Salt Lake County EPA PM10 Nonattainment Area

Drinking Water Quality

Drinking Water	Davis	Utah	U.S.
% of Population Served by Public Drinking Water Systems (2007)	99.9%	98.2%	90.0%
% of Drinking Water Systems with Violations (FY 2012)	17.0%	13.0%	—
% of Population with Fluoridated Water Supply (2010)	96.8%	54.0%	66.2%

- 26 drinking water systems, 99.9% of population approved/regulated
- 97% of population with fluoridated water supply

Recreational Water Quality

- No mercury fish consumption advisories
- Consumption advisory for ducks harvested from the Great Salt Lake marshes
- Waiting for DEQ determination about E.coli impaired streams
- Establishing nutrient/contaminant baselines for the Great Salt Lake



Food Environment

Food Environment	Davis	Utah	U.S.
Grocery Store Access* (2010)	7.8	13.1	21.8
WIC Authorized Food Store Access* (2012)	8.6	11.0	15.6
Limited Access to Healthy Foods** (2012)	4.0%	5.0%	—
Fast Food Restaurants (2010)	63.0%	59.0%	—

*Rate per 100,000 Population. **Data should not be compared with prior years due to changes in definition.



- Fewer grocery stores than the state & nation
- 63% of restaurants are fast food
- Grocery stores CDC recommends 1/10,000 residents, county rate 0.78/10,000
- "Our school is surrounded by fast food restaurants!" – Davis County Resident

Parks & Recreational Facilities

Active Living Environment (2010)	Davis	Utah
Access to Recreational Facilities, per 100,000 Population	9.1	7.4
% of Population Living within 1/2 Mile of a Park	67%	54%



Improving access to recreational facilities is an effective environmental & policy strategy to reduce obesity. (CDC)

Parks

Davis County Park Summary 2013			
City	# of Parks	# of Square Miles	Parks Per Square Mile
Bountiful	13	13.2	0.98
Centerville	5	6	0.83
Clearfield	13	7.7	1.69
Clinton	8	5.9	1.36
Farmington	17	10	1.70
Fruit Heights	4	2.3	1.74
Kaysville	11	10.5	1.05
Layton	12	22	0.55
North Salt Lake	7	8.6	0.81
South Weber	12	4.7	2.55
Sunset	3	1.5	2.00
Syracuse	12	9.4	1.28
West Bountiful	1	3.3	0.30
West Point	3	7.2	0.42
Woods Cross	2	3.8	0.53
Unincorporated	1	29.6	0.03
Total	124	145.7	0.85

Source: DCR, 2013

Trails

Davis County Trails 2013					
City	Bike Lane Miles	Paved Shared Trail Miles	Gold Medal Miles	Hiking Trail Miles	Trail Heads
Bountiful*	4.5	2.5	0	48	7
Centerville*	5	9.7	1	33.3	12
Clearfield*	0	6.76	1	0	6
Clinton*	0	5.5	1	0	0
Farmington*	16.8	60	0	119	36
Fruit Heights*	1.26	3.5	0	13.4	4
Kaysville*	1.7	20.43	1	2	17
Layton*	5.7	8.4	1	13	6
North Salt Lake*	3.5	9.4	0	4.5	3
South Weber*	6	1	0	1	1
Sunset	0	0	1	0	0
Syracuse	1.2	6	0	0	16
West Bountiful*	2.7	7.25	0	0	6
West Point*	0.5	3.6	0	0	3
Woods Cross*	1.5	6.3	0	1	2
Unincorporated	23.7	8	0	74.9	20
County Totals	74.06	158.34	6	310.10	139

*City records and county records sometimes differed. Indicators represents highest estimate.

Top 10% in U.S.

1. Premature Death
2. Poor/Fair Health
3. Adult Smoking
4. Adult Obesity
5. Physical Inactivity
6. Motor Vehicle Crash Rate
7. Preventable Hospital Stays (Medicare)
8. Some College
9. Children in Poverty
10. Inadequate Social Support
11. Children in Single-Parent Households

More than 30% of ranked measures in County Health Rankings

Not Meeting HP2020 Targets

1. Prostate Cancer Deaths
2. Poisoning Deaths
3. Suicide
4. Shiga Toxin-Producing E.coli
5. Always Wear Seatbelt
6. Sun Safety Practice
7. Mammograms
8. Colorectal Cancer Screening
9. Diabetes A1C Tests
10. Pneumococcal Vaccine (Adults)
11. Adequate Immunizations by Kindergarten
12. High School Graduation (9th Grade Cohort)

Key Informant Survey

- Online survey (SurveyMonkey), Nov-Dec 2012
- Invitation to public health partners & community leaders (43 agencies /groups)
- 391 responses
- Residents from every city, across many professional sectors
- Final Report (hard copy available & online)

Survey Results – Main Health Concerns

Adults:

1. Obesity/Weight Control
2. Cancer
3. Diabetes

Young Adults/Teens:

1. Substance Abuse/Use
2. STDs
3. Obesity/Weight Control

Children:

1. Obesity/Weight Control
2. Immunizations
3. Influenza



Survey Results – Main Health Concerns

Diseases:

1. Influenza
2. Cancer
3. Pertussis

Mental/Emotional:

1. Depression
2. Anxiety
3. Suicide

Environment:

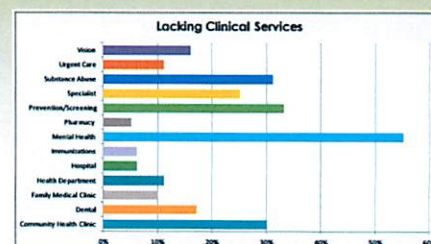
1. Air



Clinical Services

Lacking/Hard to Access Clinical Services:

1. Mental Health
2. Prevention/Screening
3. Substance Abuse



Barriers Access Healthcare

1. Cost of Healthcare
2. Insurance
3. Income



Forces Working Against Good Health



Two Perspectives from the Community

- Federal Healthcare Laws
- Religious Culture
- School Lunch
- Fewer Government Programs/More Services for the Poor

Focus Groups

- 3 groups targeting low income families, Sept 2012
- Recruited through Davis Community Learning Center & Head Start



Quotes

- "I love absolutely everything about Davis County. Everything is better here, except the air quality."
- "Where we are in North Salt Lake, the inversion and air quality is really bad. The refineries are contributing to the poor air. You can see flames shooting up, and when they aren't flaming and just sending smoke up, it's even worse. There are also the rock and gravel pits that add to the dirty air."
- "Fast food is everywhere. When you drive down the road and smell fast food, it makes you want it. And it makes your kids want it, too!"
- "Dental care is really hard to get for cheap. If you don't have insurances, then most of the time you don't get dental care because you can't afford it."



Key Findings from Focus Groups

- Participants experience housing problems: small space, old pipes, tobacco use by neighbors, bad landlords, fungus, insects, etc.
- Availability of fresh foods, recreational opportunities, and medical/dental care is not a problem. Lack of disposable income is a barrier. Accessing the resources may not be a priority.
- More than 1/2 of the participants were smokers/former smokers, compared to 7.9% of county adults. Huge concern because of lack of disposable income and health insurance.



Policy & Resource Assessment

- Programs & Policies (no idling, smoke shops, good landlord incentives, etc.)
- Resource List (water recreation, trailheads, gyms, farmers markets, recycling, senior centers, health clinics, food banks, etc.)
- City Meetings

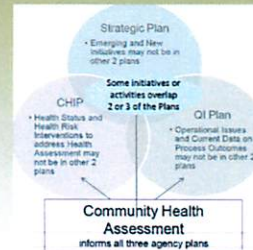
Uses

- Identify effective health policies
- Identify resource rich/poor areas
- Web-based resource locator
- City highlights



Value of CHA

- Reliable data sources & baselines
- Community Voice, story of our community, perceptions & priorities of the community, context for data
- Can be used to educate, mobilize community around health issues, grant writing, new collaborations
- Information gathered informs the Community Health Improvement Process/Plan (CHIP) & Health Department Strategic Plan

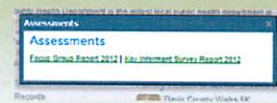


TAKE ACTION



Questions

- Assessments Link:
<http://www.co.davis.ut.us/health>



- Isa Perry, MPH, CHES
Community Outreach Planner
801-525-5212
isa@daviscountyutah.gov

Davis County . . . A Healthy Place

• Outdoor Activities	• Community Pride
• Access to Medical Care	• Mountains
• Walking Trails	• Biking
• Clean Air	• Caring People
• Not Too Big	• Clean
• Health Conscious People	• Family Oriented
• Friendly	• Easy to Exercise
• Recreation Opportunities	• Hiking
• Well Educated	• Religious
• Good Neighborhoods	• Open Spaces
• Healthy Lifestyles	• Low Tobacco/Alcohol Use

2012 Key Informant Survey