

# POOL STUDY

Parks & Recreation Department

September 15, 2016



## Updated Schedule of Deliverables

2016							
TASK	JUNE	JULY	AUGUST	SEPTEMBER	OCTOBER	NOVEMBER	DECEMBER
<b>PRELIMINARY PROPOSAL OF WORK:</b>							
Preliminary Study - Possible Alternatives	JD/JG/DP						
Proposal of Comprehensive Pool Study	JG						
Report & Review with City Manager	DP/JG/JD						
Presentation of Proposal to City Council	DP						

Average visits per hour per day	Winter - NO CHANGE Open Labor Day - Memorial Day		Winter - OPTION 1 Open 2pm - 10 pm		Winter - OPTION 2 Open 6pm - 10 pm		Winter - OPTION 3 Open 5 am - 10 am & 2 pm -10pm		Winter - OPTION 4 Closed
	M-F	Sat.	M-F	Sat.	M-F	Sat.	M-F	Sat.	
5:00 AM	14	4					14	4	
6:00 AM	8	5					8	5	
7:00 AM	17	18	14		14		14	18	14
8:00 AM	16		13	9	13	9	13	16	13
9:00 AM	6	23	9		9	73	9	73	9
10:00 AM	3		11	73	11	73		11	73
11:00 AM	3		8	74	8	74		8	74
12:00 PM	2		13		13		13		13
1:00 PM	1	43	34		34			43	34
2:00 PM	1	43	86	1	43	86		43	86
3:00 PM		90	104		90	104		90	104
4:00 PM	19	103	81	19	103	81	19	103	81
5:00 PM	23	102	53	23	102	53	23	102	53
6:00 PM	13	15	46	13	15	46	13	15	46
7:00 PM	12	31	117	12	31	117	12	31	117
8:00 PM	6	25	117	6	25	117	6	25	117
9:00 PM	6	12	117	6	12	117	6	12	117
Hours Open	17	15	8	15	4	8	11	8	0

Daily Visit Totals	Historical Average		Change in the Number of Users						
	No Change Option	Option 1	Option 2	Option 3	Option 4				
Lap Swimmers	73	55	-67	0	-67	0	-12	0	-128
Aerobics	68	9	-50	0	-50	0	-23	0	-77
Open Plunge	4	0	-3	0	-4	0	-4	0	-4
Swim Team	381	0	-43	0	-381	0	-43	0	-381
Swim Lessons	67	147	0	73	-42	73	-54	73	-170
Open Wave	71	417	0	0	0	0	-57	0	-488
Private Party	0	117	0	0	0	0	0	0	-117

Layton City Parks & Recreation Department  
Comprehensive Pool Study - June 16, 2016

### Proposed Work Plan

#### METHODOLOGY

Layton City Parks & Recreation Staff has been asked to conduct a comprehensive study of the Surf n' Swim pool located at 465 North Wasatch Drive. In putting together the work plan elements, we have made every effort to craft a process that is inclusive, informative, efficient and productive. The following tasks have been identified and outlined below along with a proposed schedule for each task.

The proposed project management team for this study will include staff from Parks & Recreation (Josh Dukas – Surf n' Swim Aquatics Division Manager and JoEllen Grandy – Parks Planner) and Finance (Tracy Probert – Finance Director) with David Price – Parks Director as Project Manager.

#### TASK 1: Historical Background

In order to understand the context up through to the present time in relation to the existence of the pool in Layton City a brief historical sketch will be compiled of the pool facility, programs and financials since its conception outlined as follows:

1. **Facility Sketch.** A brief timeline and description of the pool facility's establishment and expansion through to the present-day.  
*Tasked Assigned: JoEllen Grandy.*
2. **Programs Sketch.** A brief timeline and description of the pool facility's programs originally offered and expansion through to the present-day.  
*Tasked Assigned: JoEllen Grandy.*
3. **Financial Sketch.** An organized timeline and description of the pool facility's financials (categorized details of the initial base cost, debt payback, maintenance and improvement costs, and revenue) since its establishment through to the present-day.  
*Tasked Assigned: Josh Dukas/Tracy Probert.*

#### TASK 2: Inventory & Analysis

An inventory and analysis of pools offered in Weber, Davis, Salt Lake and Utah County will be gathered. This will be conducted to understand the context of Layton City's services offered in relation to other municipal, private and joint private/public aquatic centers offered in the surrounding area outlined as follows:

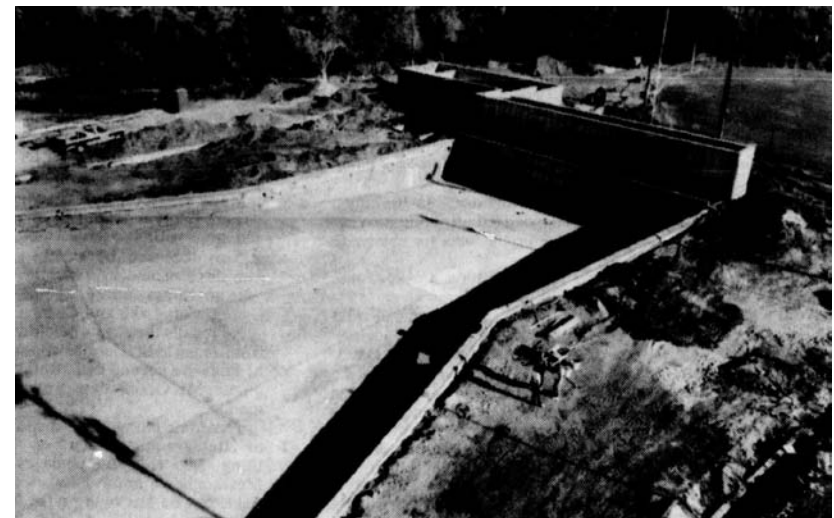
1. **Inventory of Existing Pool Services.** An inventory will be gathered of municipality, private and joint private/public aquatic centers offered within Weber, Davis, Salt Lake and Utah County in relation to the services they provide. An excel spreadsheet will be organized providing details of the pool's facility features and programs along with a map illustrating their locations.  
*Tasked Assigned: JoEllen Grandy.*
2. **Case Studies.** From each category (municipality, private and joint private/public), further inquiry regarding their financials will be explored and reported in detail of their base cost, debt payback, maintenance and improvement costs and revenue for each. The following centers have tentatively been selected for this in-depth look:
  - a. Municipality

## Updated Schedule of Deliverables

TASK	2016						
	JUNE	JULY	AUGUST	SEPTEMBER	OCTOBER	NOVEMBER	DECEMBER
<b>TASK 1: Historical Background</b>							
Facility Sketch		JG					
Programs Sketch		JG					
Financial Sketch		JD/TP					
Report & Review with City Manager		DP/JG/TP					

### ***HIGHLIGHTS*** – Facility & Programs

- **First Pool** – February 14, 1958, \$35,000.
- **Surf n’ Swim** - In 1985, \$895,000 worth of bonds
  - Facility & Programs
- **Improvements, repairs and discussions**
  - 1986 to 2016
- **Before there was a pool...**
  - What Layton residents did for aquatic recreation

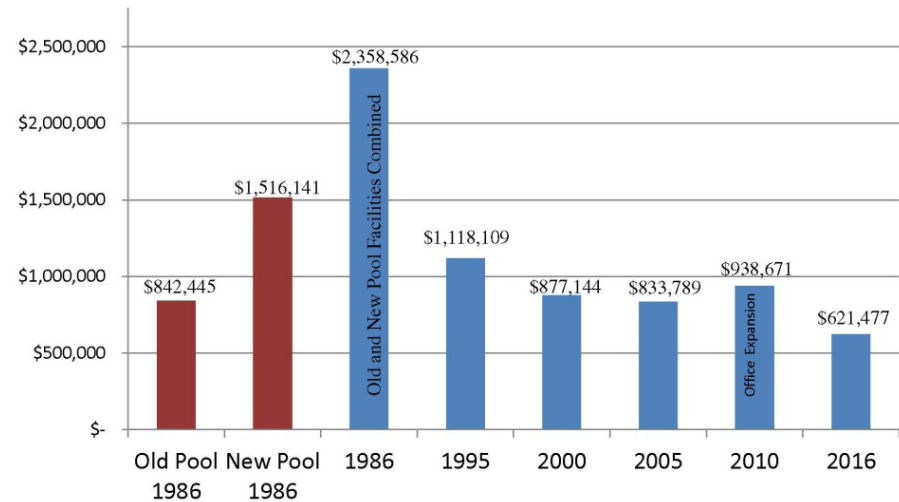


*Images of the Surf n’ Swim facility under construction in 1986 (Duncan).*

# HIGHLIGHTS - Financials

- Depreciated Asset Value
- Debt
- Revenue & Expenditures
- Operating Losses
- Transfers from General Fund
- Unrestricted Net Assets (the Reserves)

## Depreciated Asset Value – Pool Facilities



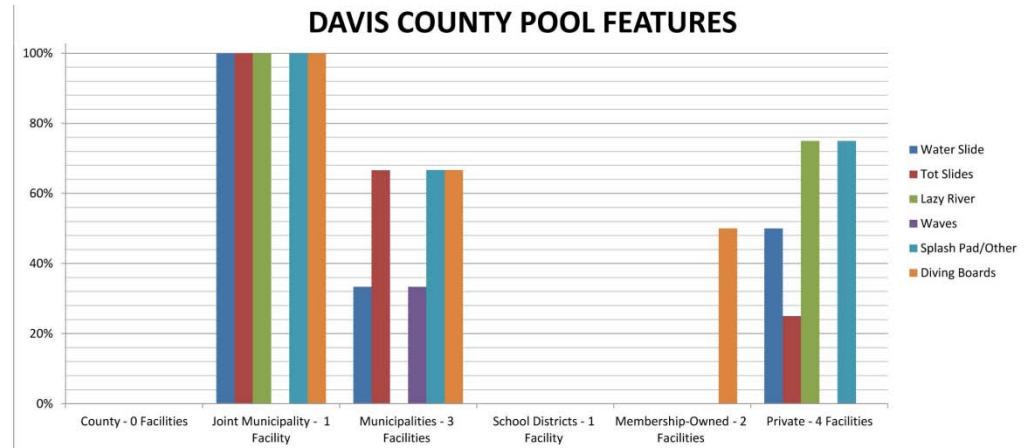
*Example of the charts prepared to illustrate financial patterns (Probert).*

## Updated Schedule of Deliverables

TASK	2016						
	JUNE	JULY	AUGUST	SEPTEMBER	OCTOBER	NOVEMBER	DECEMBER
<b>TASK 2: Inventory &amp; Analysis</b>							
Inventory of Existing Pool Services			JG				
Case Studies			JD	JG/TP	JG/TP		
Report & Review with City Manager			DP/JG		DP/JG/TP		

### *HIGHLIGHTS – Inventory of Existing Pool Services*

- **Counties** – Weber, Davis, Salt Lake & Utah
- **Pool Facilities**
  - County
  - Joint Municipality
  - Municipality
  - School District
  - Membership-Owned
  - Private
- **Pool Attributes**
  - Features
  - Programs
  - Open
  - Year Established / Remodels
- **Charts & Tables** – Data & Percentages
- **Maps & Photo Illustrations**



Example of the charts prepared to illustrate typical pool features in Davis County (Grandy).



# HIGHLIGHTS - Inventory of Existing Pool Services

PHOTOGRAPHS

## DAVIS COUNTY - Joint Municipality / Municipal



South Davis Recreation Center (Indoor)  
Bountiful, UT



South Davis Recreation Center (Outdoor)  
Bountiful, UT



Clearfield Aquatic Center (Indoor)  
Clearfield, UT



Clearfield Aquatic Center (Outdoor)  
Clearfield, UT



Surf n' Swim  
Layton, UT



Farmington City Swimming Pool  
Farmington, UT

## DAVIS COUNTY - Joint Municipality / Municipality



South Davis Recreation Center (Indoor)  
Bountiful, UT



South Davis Recreation Center (Outdoor)  
Bountiful, UT



Clearfield Aquatic Center (Indoor)  
Clearfield, UT



Clearfield Aquatic Center (Outdoor)  
Clearfield, UT

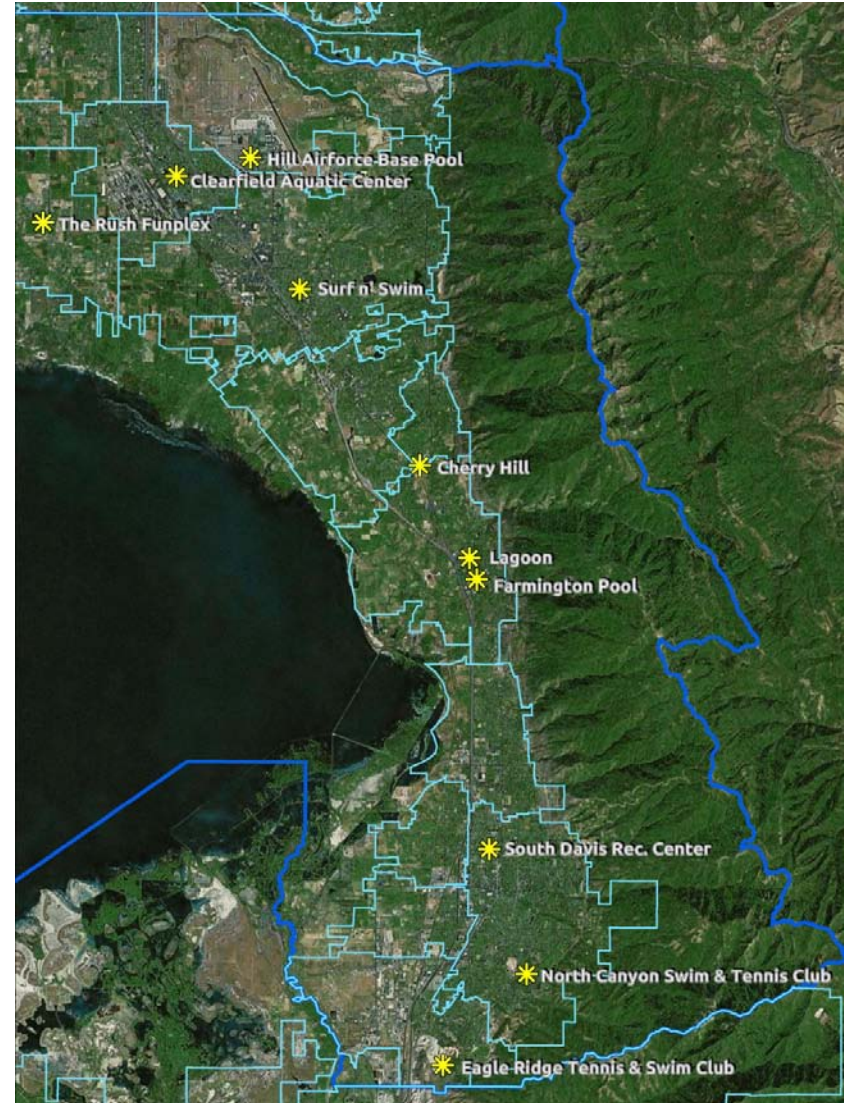


Surf n' Swim  
Layton, UT



Farmington City Swimming Pool  
Farmington, UT

AERIAL IMAGES



Pool locations studied within Davis County (Grandy).

## Updated Schedule of Deliverables

TASK	2016						
	JUNE	JULY	AUGUST	SEPTEMBER	OCTOBER	NOVEMBER	DECEMBER
<b>TASK 3: Needs Assessment &amp; Analysis</b>							
Formal Survey			JG	JG			
Stakeholder Interviews			JG/JD	JG	JG		
Report & Review with City Manager				DP/JG	DP/JG		
<b>TASK 4: Revisit Possible Alternatives, Implementation &amp; Costs</b>							
Report & Review with City Manager						DP/JG/TP	
Presentation of Alternatives to City Council						DP/JG/TP	
<b>TASK 5: Decisions, Goals &amp; Objectives</b>							
Report & Review with City Manager							DP/JG/TP
Presentation of Findings to City Council							DP/JG/TP

### HIGHLIGHTS – Surveys & Interviews

- **Stakeholder Groups** (30 from each group)
  - School District Users
  - Pool Program Users
    - Lap
    - Team
    - Water Aerobics
  - Open Plunge / Wave General Users
- **General Public**
  - Randomly selected of 17,136 households
    - Goal 750 returned surveys
    - Confidence interval of +/- 3.5%
- **Individual Interviews with City Council**

LAYTON CITY PARKS & RECREATION POOL SURVEY  
 Layton City Parks & Recreation Department would like your input about public swimming pools in the area, including the Layton City Surf n' Swim pool. This two-page survey will take approximately 30 minutes to complete. When you are finished, please return your survey in the postage-paid, return-reply envelope.

\*IN ORDER TO REMAIN ANONYMOUS PLEASE DO NOT WRITE YOUR NAME ON THIS FORM\*

FIRST, WE WOULD LIKE TO KNOW YOUR OPINIONS ON LAYTON CITY'S SURF N' SWIM FACILITY

1. Have you or members of your household used the Surf n' Swim pools during the past year? (Circle your answer.)

- 0. No (skip to question 6)
- 1. Yes

2. If YES, what were the ages of household members, including yourself, who used the pool? (Circle all that apply.)

8. Please tell us if the current fees for Year Passes are too high, about right, or too low?

	Fee	Too High	About Right	Too Low
a. Individual	\$225.00	1	2	3
b. Family (up to 5 people)	\$375.00	1	2	3
c. Additional Family Member	\$100.00	1	2	3
d. Racquetball	\$200.00	1	2	3