

January 21, 2016 – City Council Work Session

Economic Development Projects Update

Free Business Workshops

Put Layton on the Map w/Google

- Wed, Nov 4: Two - 1 hour sessions, 20+ attendees
- Connect w/customers on Google



5-week Small Business Seminar Series

- Every Wed, Jan 13-Feb 10: 1 hour sessions, 20 registrants
- Partnership w/ SBDC & local lenders
- Intro to small business, business plans, financing, strategy, etc.



Historic Layton Train Station



Community & Economic Development Department

WinCo Foods



KIHOMAC – East Gate Business Park





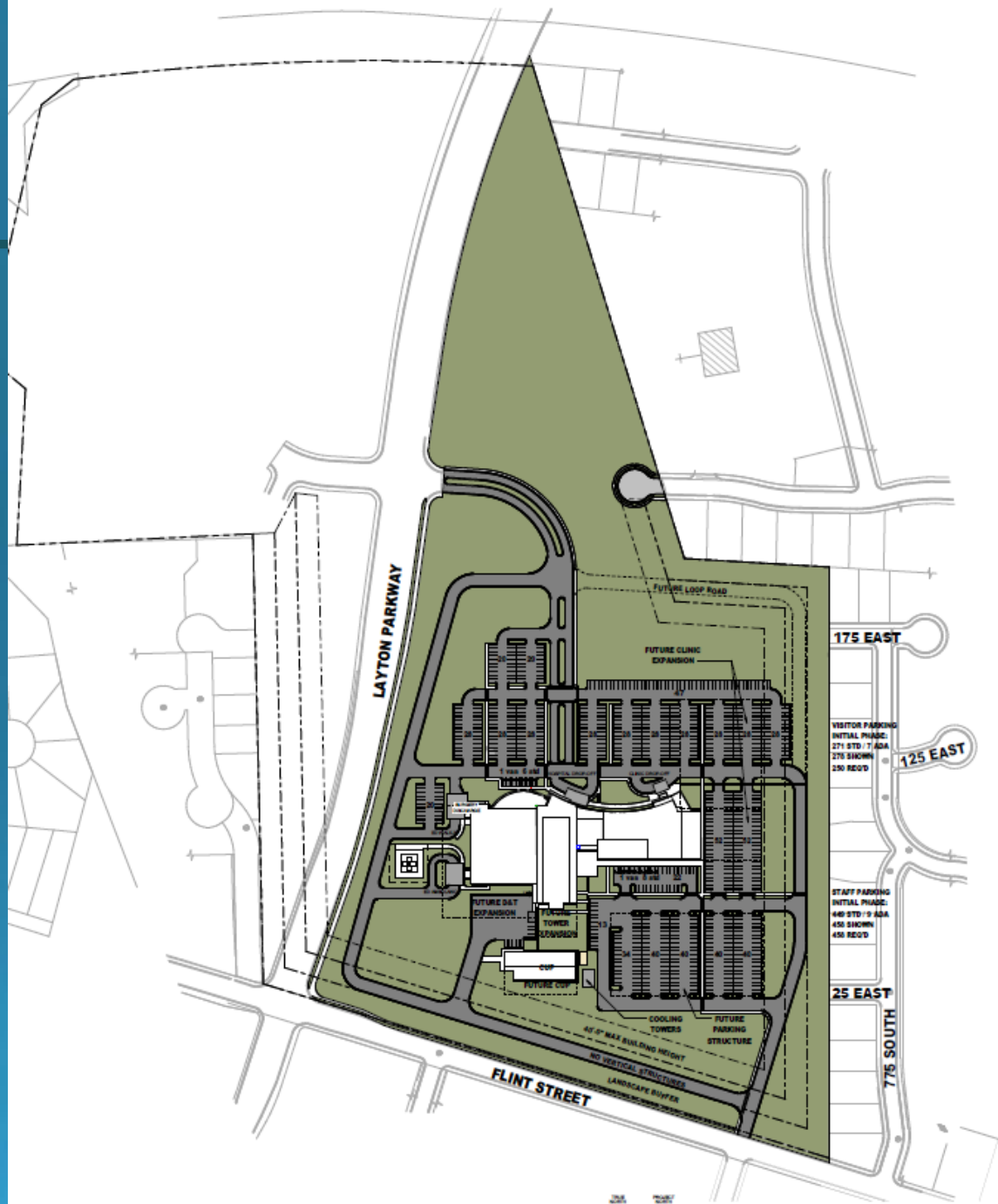
INTERMOUNTAIN LAYTON HOSPITAL BREAKING GROUND, SPRING, 2016



320,000 sq. ft. Facility Includes:

- 220,000 sq. ft. Hospital
 - 36 Inpatient Beds
 - 4 Operating Rooms
 - Est. Completion (Early 2018)
- Emergency Care
 - Est. Completion (Early 2018)
- Primary Children's Hospital
 - Est. Completion (Early 2018)
- 100,000 sq. ft. Medical Office
 - Est. Completion (Mid-2017)





Intermountain Layton Hospital

OVERALL VIEW



Community & Economic Development Department

Intermountain Layton Hospital

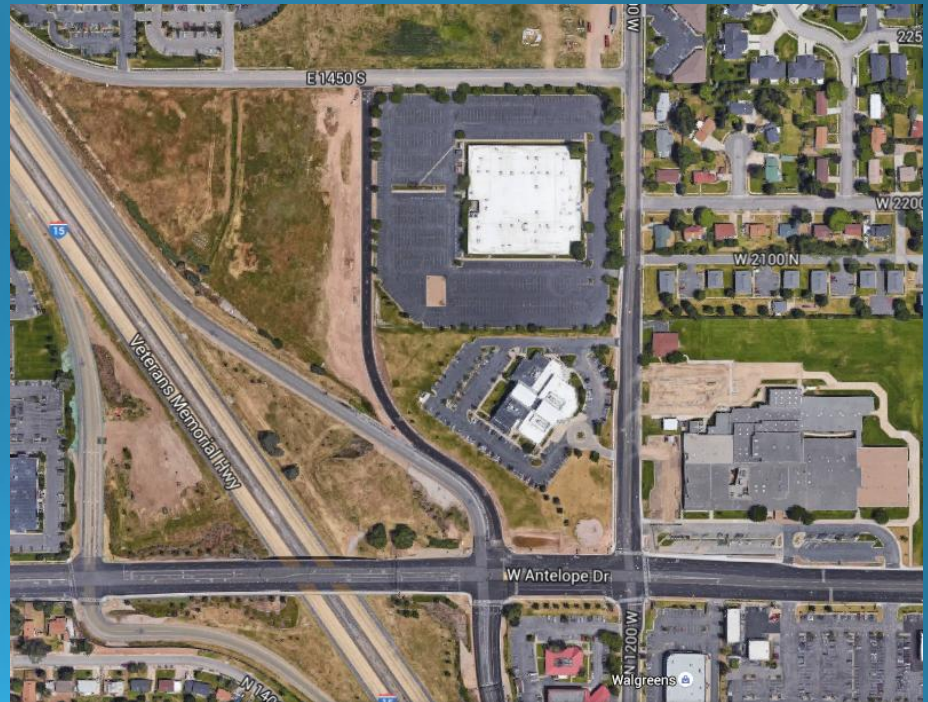
LAYTON PARKWAY VIEW



Community & Economic Development Department

Intermountain Medical Office

- \$4 million T.I. plans received
- 500-600 employee target – relocation and new jobs
- Revenue Cycle
- Health Answers
- Telemedicine



SeaQuest Interactive Aquarium Layton Hills Mall

- 19,400 Sq Ft – Main Level in old Sports Authority
- Existing locations in Austin and San Antonio
- Layton location to be flagship location moving forward
- Interactive Experience



Winkel Site Assemblage - 2015



Winkel Site Assemblage - 2016

