

- Click to edit Master text styles

Lake Mountains Target Shooting Land Use Plan Amendment

» Fifth level



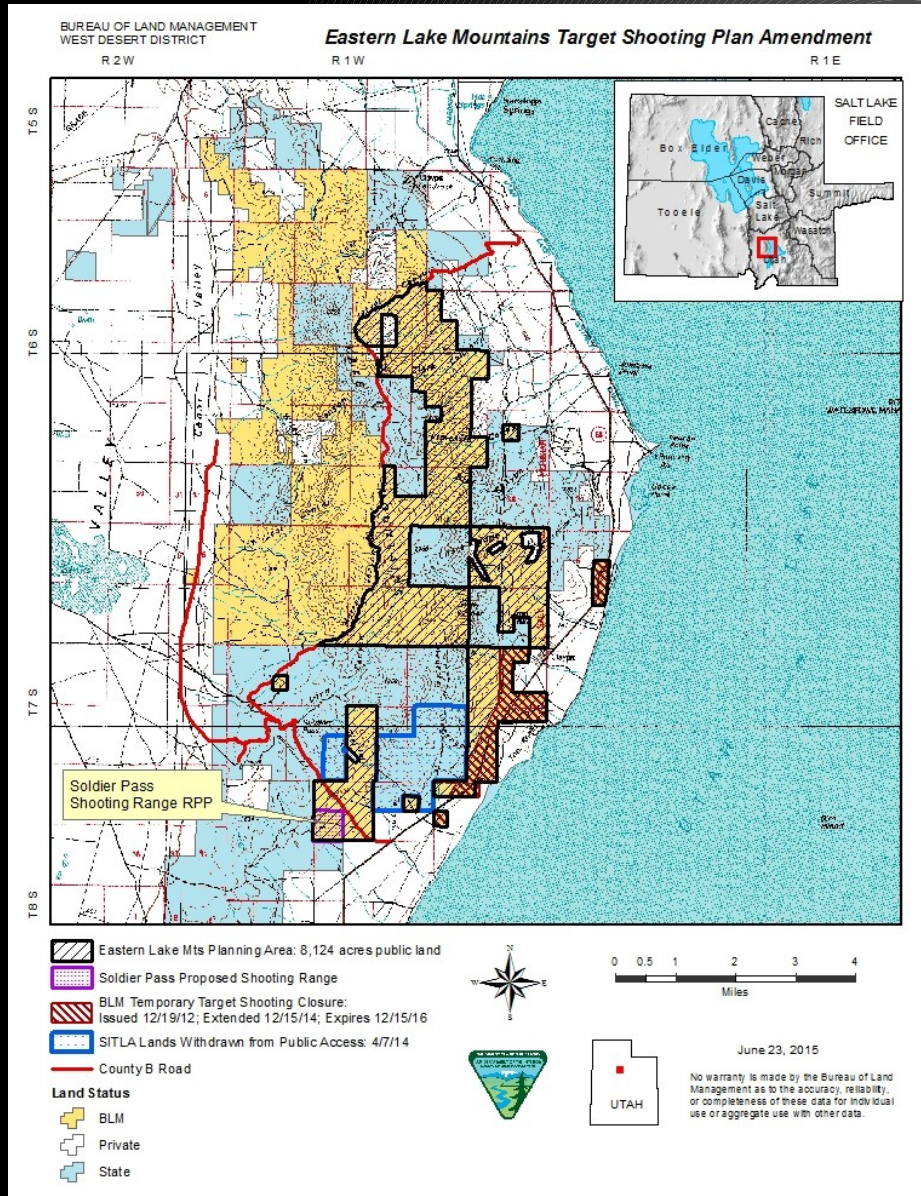
02/05/2015

BLM SLFO Largest Wildland Urban Interface

- Saratoga Springs, Eagle Mt. City
- 20-50,000 target shooters per year
- Management issues:
 - public safety
 - wildfire
 - cultural resource damage
 - trigger trash/dumping
 - property damage
- 2012, 2014 temporary target shooting closure of 900 acres
- More needed: land use plan amendment & EA



Location & Need



- East Side Lake Mts.
- Planning area: 8,124 acres
- Temporary closure expires 12/15/16
- Long-term solution: plan amendment
- Public pressure & participation
- Planning start

Public Safety Concerns

Primary reason for
2012 closure

High use: 400 shooters per
weekend, up to 4,000 monthly

Unsafe shooting
practices

2012 safety incidents

Need for safe
shooting locations



Wildfire



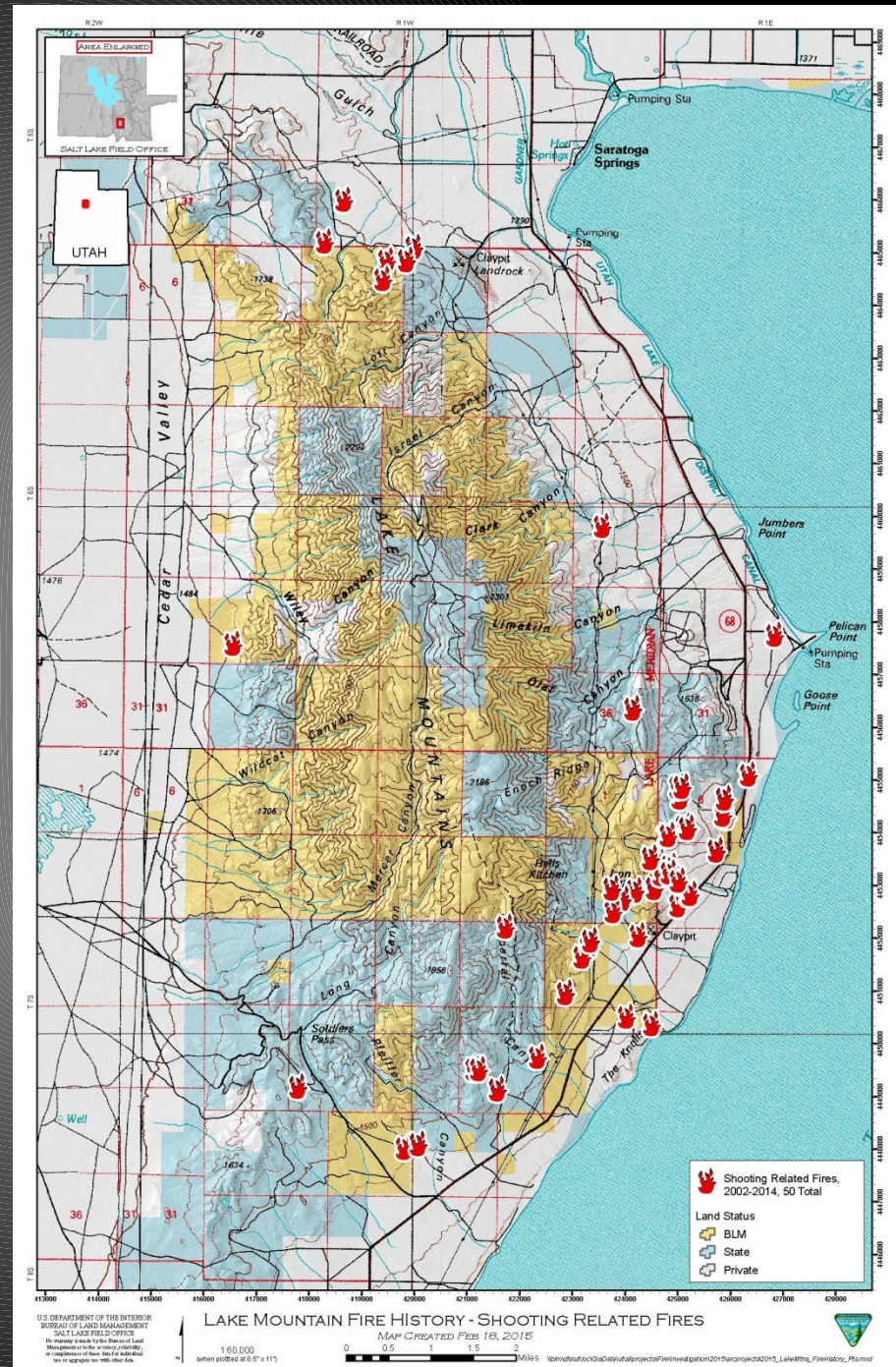
Target shooting causes
Federal & Utah County
regulations

Annual threat: homes,
powerlines, communication
towers

Utah Governor priority site
2002-2012 (before closure):
40% target shooting related
2008-2012: \$2.6 million
suppression costs

Fire History

Year	Target shooting fires	Other fires	Total fires
2002	1	2	3
2003	2	5	7
2004	3	2	5
2005	1	16	17
2006	4	16	20
2007	4	3	7
2008	1	3	4
2009	7	4	11
2010	5	10	15
2011	9	10	19
2012	12	2	14
After August 2012 Closure			
2013	1	2	3
2014	0	1	1



Cultural Resource Damage

Direct & indirect gunfire

Painted targets

Vandalism & theft

-- Protection Needed --



Trigger Trash, Dumping

Sites polluted

Shooting target debris, spent ammunition

Inappropriate, hazardous targets

Danger to people, wildlife

Numerous cleanups:

\$20,000 over 2 yrs

Electronic waste special disposal

Volunteer cleanups outpaced by trigger trash





Public Involvement & Partners

Public involvement critical

Stakeholders:

Private landowners

Target shooting community

City, county, state govt.

Tribes

Environmental groups

Cultural resource protection groups

General recreating public



Actions taken by Partners



- Patrols
- Barricades
- Hwy 68 fence
- Bulletin boards
- Signs
- SITLA closure



Actions taken by Partners

- Volunteer cleanups
- Public outreach
- Statewide fire restrictions
- Fuel breaks
- Rock art protection fences

- Soldier Pass target shooting range RPP

Figure 2 - Soldier Pass Shooting Range R&PP U-89553

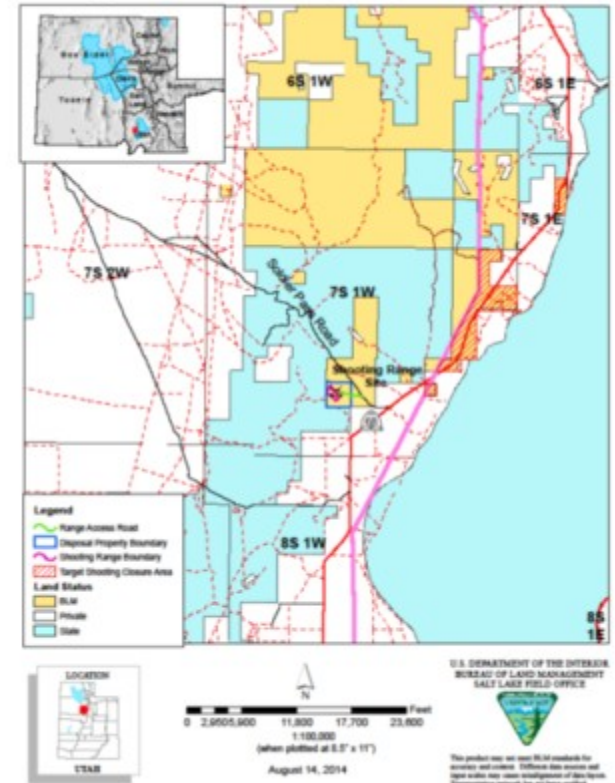
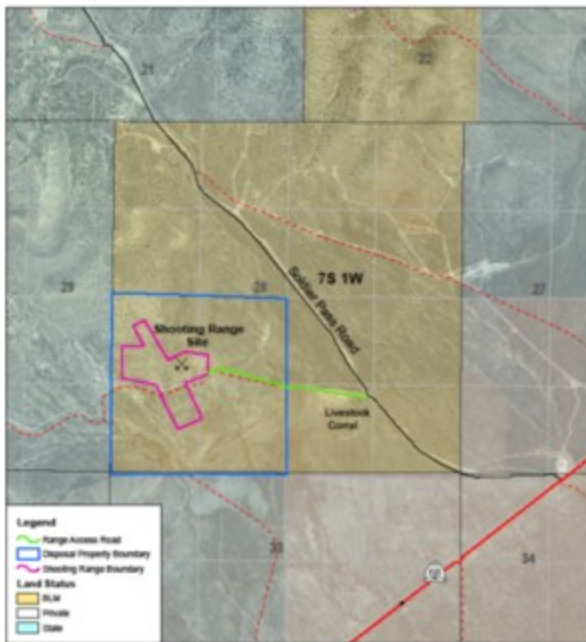


Figure 3 - Soldier Pass Shooting Range R&PP U-89553



Steps in Target Shooting Amendment Process/Timeline

Federal Register Notice published: 6/12/15

Public scoping: June-August 2015

Cooperating Agencies meeting: 7/28/15

Consulting Parties meeting: 7/29/15

Public scoping meetings: 8/4-5/15

Draft plan amendment/EA: Fall/Winter 2015

Draft public comment period: Winter 2015

Proposed plan amendment/EA: Spring 2016

Protest period/Governor's Review: Summer 2016

Final solution in place by 12/15/16

Initial Alternatives

Alternative A (No Action): Allow 900-acre temporary closure to lapse

Alternative B: Make 900-acre temporary closure permanent

Alternative C: Expand current closure and/or implement other target shooting restrictions

Additional alternatives to be developed through planning process

Opportunity & Challenge

Safe target shooting sites

Other recreation experiences

Wildlife habitat

Outdoor cultural resource museum



And look at these outstanding views!



Public Comment Period: 6/12-8/20/15

ePlanning web site: https://www.blm.gov/epl-front-office/eplanning/nepa/nepa_register.do

ENBB web site:

<https://www.blm.gov/ut/enbb/index.php>

Email: blm_ut_sl_comments@blm.gov

Fax: (801) 977-4397 Attn: JuLee Palette

Mail: BLM Salt Lake Field Office, Attn: JuLee Palette,
Outdoor Recreation Planner, BLM SLFO 2370 S.
Decker Lake Blvd, West Valley City, UT 84119

Attend a public scoping meeting: August 4-5, 2015

Come to the BLM Salt Lake Field Office