

REQUEST FOR COUNCIL ACTION

SUBJECT: 7000 South Utility Design from the Jordan River to Constitution Park

SUMMARY: Approval of Amendment No. 3 to the Professional Service Agreement with Stanley Consultants, Inc. for additional engineering services to provide final design service for Phase 1 of the 7000 South project from the Jordan River to 1905 West, in an amount not to exceed \$311,847.00.

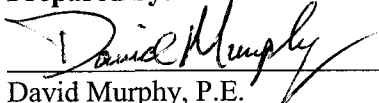
FISCAL IMPACT: Funding for this project is available in the Capital Storm, Water and Sewer Accounts.

STAFF RECOMMENDATION: Staff recommends approval of Amendment No. 3 to the Professional Services Agreement with Stanley Consultants, Inc. for additional engineering services to provide final design service for Phase 1 of the 7000 South project from the Jordan River to 1905 West, in an amount not to exceed \$311,847.00.

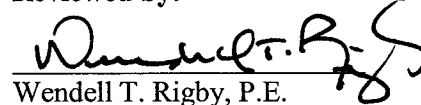
MOTION RECOMMENDED: "I move to adopt Resolution No. 15-166 authorizing the Mayor to execute Amendment No. 3 to the Professional Service Agreement with Stanley Consultants, Inc. for additional engineering services to provide final design service for Phase 1 of the 7000 South project from the Jordan River to 1905 West, in an amount not to exceed \$311,847.00.

Roll Call vote required.

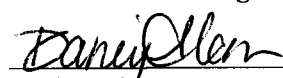
Prepared by:


David Murphy, P.E.
Capital Projects Manager

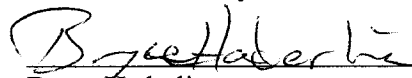
Reviewed by:


Wendell T. Rigby, P.E.
Director of Public Works

Reviewed as to Legal Sufficiency:


Darien Alcorn
Acting City Attorney

Recommended by:


Bryce Haderlie
Interim City Manager

BACKGROUND DISCUSSION:

Preliminary design (30%) has been established for the entire utility project along 7000 South from the Jordan River to Constitution Park with Stanley Consultants. The project has been broken into 2 phases for final design due to funding constraints, construction scheduling, and permitting requirements. The first phase will run from the Jordan River to 1905 West (Heather Way) to provide a logical waypoint for the project as a whole due to jurisdictional concerns, timely construction, and permit approvals.

This amendment provides full design service for this phase of the work as defined above. Staff did have Stanley Consultants provide a full estimate of costs for phase 2 design work, and estimates for phase 1 and 2 construction management. However, being that funding for the entire project is not yet secured, only the full design effort for phase 1 is being presented at this time. The amount for the phase 1 design is not to exceed \$311,847.00. The scope is attached for review, and staff recommends approval.

Attachments:

Resolution
Amendment No. 3

THE CITY OF WEST JORDAN, UTAH
A Municipal Corporation

RESOLUTION NO. _____

A RESOLUTION AUTHORIZING THE MAYOR TO EXECUTE AMENDMENT NO. 3 TO THE
PROFESSIONAL SERVICES AGREEMENT BETWEEN
THE CITY AND STANLEY CONSULTANTS, INC. FOR THE
7000 SOUTH UTILITY DESIGN FROM THE JORDAN RIVER TO CONSTITUTION PARK

WHEREAS, the City Council of the City of West Jordan has reviewed Amendment No. 3 to the Professional Services Agreement between the City of West Jordan and Stanley Consultants, Inc. (a copy of which is attached) for additional engineering services to provide final design services for Phase 1 of the 7000 South project from the Jordan River to 1905 West, in an amount not to exceed \$311,847.00; and

WHEREAS, the City Council of the City of West Jordan desires to approve Amendment No. 3 to the Professional Services Agreement with Stanley Consultants, Inc. for additional engineering services to provide final design services for Phase 1 of the 7000 South project from the Jordan River to 1905 West, in an amount not to exceed \$311,847.00.

NOW, THEREFORE, IT IS RESOLVED BY THE CITY COUNCIL OF WEST JORDAN, UTAH, THAT:

Section 1. After approval as to legal form, the Mayor is hereby authorized and directed to approve Amendment No. 3 to the Professional Services Agreement with Stanley Consultants, Inc. for additional engineering services to provide final design services for Phase 1 of the 7000 South project from the Jordan River to 1905 West, in an amount not to exceed \$311,847.00.

Section 2. This Resolution shall take effect immediately upon passage.

Adopted by the City Council of West Jordan, Utah this 25th day of August 2015.

Kim V. Rolfe
Mayor

ATTEST:

MELANIE S. BRIGGS
City Recorder

Voting by the City Council	"AYE"	"NAY"
Jeff Haaga	_____	_____
Judy Hansen	_____	_____
Chris McConnehey	_____	_____
Chad Nichols	_____	_____
Sophie Rice	_____	_____
Ben Southworth	_____	_____
Mayor Kim V. Rolfe	_____	_____

AMENDMENT NO. 3

**City of West Jordan
7000 South Utility Design
From
The Jordan River to Constitution Park**

THIS AMENDMENT, made and entered into this 25th day of August 2015 by and between the CITY OF WEST JORDAN, a municipal corporation (hereinafter referred to as "City"), Stanley Consultants, Inc.(hereinafter referred to as "Consultant").

The City and Consultant agree as to amend the following sections of the original Professional Services Agreement to provide for geotechnical services for the 7000 South Utility Design from the Jordan River to Constitution Park.

2. **DESCRIPTION OF SERVICES**

The services to be performed by Consultant are as follows:

Provide additional engineering services for final design for Phase 1 of the 7000 South project from the Jordan River to 1905 West as described in the attached Consultant's proposal dated July 21, 2015.

3. **COMPENSATION AND PAYMENT**

The total compensation payable to Consultant by City for the services described in Paragraph 2 shall not exceed the sum of **\$311,847.00** for Amendment No. 3 bringing the total not-to exceed fee to \$539,922.00 for services under this contract.

In concurrence and witness whereof, this Agreement has been executed by the parties effective on the date and year first above written.

CITY OF WEST JORDAN

Kim V. Rolfe, Mayor

APPROVED AS TO ADMINISTRATION:

Melanie Briggs, City Recorder

CONSULTANT

Mark I. Freeman
Stanley Consultants, Inc.

STATE OF Utah
COUNTY OF Salt Lake :SS

On this 12th day of August, 2015 personally appeared before me, _____

Mark I. Freeman, who being by me duly sworn did say that he is the Vice President
of Stanley Consultants, Inc., a C-

Corporation, and that the foregoing instrument was signed in behalf of said corporation by authority of its
Board of Directors, and he acknowledged to me that said corporation executed the same.

Angela M. Richey
NOTARY PUBLIC



My Commission Expires: 11-8-2015

Residing in Salt Lake County, Taylorsville

July 21, 2015

Mr. Dave Murphy, PE
City of West Jordan
8000 South Redwood Road
West Jordan, UT 84088

Subject: Proposal for Professional Engineering Services
7000 South Final Utility Design
Phase 1 Jordan River to 1905 West (Heather Way)

Dear Mr. Murphy:

Thank you for the invitation to submit a proposal to provide professional services on behalf of the referenced project. The proposal includes the following detailed Scope of Services and fee estimate.

Project Background

The City of West Jordan has requested Stanley Consultants provide the following scope and fee for the final design of storm drain, sanitary sewer, and water system improvements from approximately 1905 West (Heather Way) to the Jordan River along the 7000 South corridor. This project is a continuation of the 7000 South Preliminary Utility Design from the Jordan River to Constitution Park.

Scope of Services

Phase 1 Final Design Services

1. Project Management: Stanley Consultants's Project Manager will provide overall direction and control for the project. The tasks within this activity will include managing the project tasks, schedule, and budget; bi-weekly project team meetings, prepare and submit monthly invoices, administration of project cost and schedule control, and maintaining project records.
2. Project Kick Off Meeting: Our key team members will meet with City personnel to establish roles and responsibilities, review the scope, schedule, and deliverables, as well as project goals. We will address known issues and concerns at the commencement phase; discuss the communication plan; identify data requirements; and establish a process for responding to new and undefined challenges and issues that arise during the project.
Deliverable: Meeting notes distributed electronically.
3. Prepare Project Work Plan: Our work plan will outline the role of each team member and document the progress through each phase and task. We will prepare the work plan and use it as a tool so that the team is united and remains connected to the scope and budget throughout the entire project.
4. Monthly Client Review Meetings: Once per month at a time designated by the City, key members of the design team will meet with the City staff to review and demonstrate progress, seek input, review completed work, and address questions and issues that have surfaced since the

This document was sent electronically.

previous meeting. This scope of services and associated fee assumes four monthly client review meetings will be held at the City office.

Deliverable: Meeting notes distributed electronically.

5. Survey (topographic and utility mapping): Stanley Consultants will supplement existing topographic mapping of the 7000 South corridor right-of-way within the project limits. Topographic mapping will include obtaining invert data for storm, sanitary manholes, irrigation structures, water manholes, and other surface features identified from the preliminary design analysis within the right-of-way. Survey will require traffic control by a subconsultant. This scope of services and fee assumes survey mapping will be conducted at night during off peak traffic hours. Additionally, topographic features will be mapped at the following locations:
 - a. 1300 West Street Right-of-Way and corner of Chevron fueling station; see Exhibit A for limits of survey.
 - b. North of 7000 South from the North Jordan Canal to the Jordan River; see Exhibit B for the limits of survey.
 - c. 1905 West Street Right-of-Way and Bicentennial Park; see Exhibit C for the limits of survey.
 - d. Jordan River Parkway Trail Bridge area; see Exhibit D for the limits of survey.
 - e. Concrete panel joints within the intersection of Redwood Road and 7000 South; see Exhibit E for the limits of survey.

Deliverable: Topographic and utility mapping data will be added to the existing Base Map. The base map will be shared electronically.

6. Finalize Base Mapping: Stanley Consultants will update the project utility and topographic base map prepared during the preliminary design phase with the data collected in Task 4. The base map will be prepared using AutoCAD Civil 3D using Stanley Consultants CADD standards. The base map will include a surface model and data base of all utilities that have been located. The utility data base will include vertical and horizontal alignment information of each utility along with type, size, and material. The base map will be suitable for the development of plan and profile construction drawings. The base map and utility data base will have the ability to be dynamically linked so that utilities will appear in the profiles. The base map will also include aerial imagery of the project area and the location of the right-of-way. Roadway names and stationing along roadway centerline will be included in the base map.

Deliverable: CADD Base Map (AutoCAD Civil 3D) with utility data base, and aerial imagery.

7. Review Storm Drain and Sanitary Sewer Video Inspection: Stanley Consultants will review storm drain and sanitary sewer inspection videos of the existing storm drain and sanitary sewer pipelines in the project area. Video inspection of the storm drain and sanitary sewer pipelines to be provided by the City. The video inspection will be used to determine the condition of the existing facilities and the viability of utilizing them in the final design. Stanley Consultants will prepare and submit a memorandum summarizing the findings of the review of the inspection videos along with recommendations for inclusion in the design.

Deliverable: Memorandum of video inspection review findings.

8. Utility Investigation: Stanley Consultants will work with our specialty subconsultant (Cardno) to provide locating services as required to achieve the vertical resolution necessary for a final design of utilities in the 7000 South corridor. This scope and fee assumes that up to 24 additional utility investigation boreholes will be completed. Decision on which utilities to be located will be made with City staff input. Utility locating information will be included in the design and a report will be submitted summarizing the results of the utility locating.

Deliverable: Utility locating findings.

9. Hydrologic Analyses of stormwater, routing and detention modeling: Stanley Consultants will review the hydrologic analysis of the 7000 South corridor that was developed during the preliminary design. The hydrologic analysis will be updated based on changes in the final design, the addition of catch basins, and taking into account storm water detention facilities not included in the Storm Water Master Plan. Three additional storm water detention facilities have been identified as part of the preliminary design that are not included in the Storm Water Master Plan that will be included in the analysis. The analysis will include a routing of the 10 yr-24 hr, 25 yr-24 hr, and the 100 yr-6 hr events. From the analysis, we will determine how to optimize stormwater detention storage at Bicentennial Park. The results of the hydrologic analysis will allow our team to define required hydraulic capacity of the new storm drainage infrastructure; appropriately size detention storage where applicable; and identify potential impacts caused by discharges from the Utah & Salt Lake Canal and South Jordan Canal.

Deliverable: Final Storm and Sanitary Sewer model with summary of results.

10. Engineering Analysis for Required Utility Capacities: Stanley Consultants will review the hydraulic capacities of the proposed sanitary sewers and stormwater conveyance facilities that were prepared as part of the preliminary utility designs. Review of the hydraulic capacities will be conducted to verify that the final design of the proposed sanitary sewers and stormwater conveyance facilities is adequate.
11. Third Party Coordination: Stanley Consultants will coordinate with third party stake holders within the project area. Third party stake holders include UDOT, Rocky Mountain Power, Salt Lake County Flood Control, North Jordan Canal Company, Jordan Valley Water Conservancy District, Questar Gas, and telecommunications utility providers. Third party coordination will be a continuation from the preliminary design phase of the project.
12. Final Easement Documents: Stanley Consultants will finalize the easement documents prepared during the preliminary design based on the final design alignments. Easement documents will be prepared and submitted to the City for execution. Easement documents will be finalized for Rocky Mountain Power.

Deliverable: Final easement documents for execution by the City.

13. Permitting: Stanley Consultants will prepare final permitting packages in response to comments from the initial applications prepared during preliminary design. Application packages will be provided to the City for submittal to the appropriate approval agencies. Permit packages will be prepared to include any changes to the preliminary design and/or address any review comments received from approval agencies. Permits shall include Utah Division of Drinking Water, North Jordan Canal Company (Salt Lake County Flood Control) and the Utah Division of Water Resources Stream Alteration Permit. All permitting fees to be paid by the City.

Deliverable: Permit packages for submittal by the City.

14. Design of Secondary Water Transmission Pipeline: Stanley Consultants will prepare design documents for a secondary water transmission pipeline. The secondary water transmission pipeline is to be a 24-inch diameter PVC pipe. The pipeline will begin at the south west corner of 7000 South at the Jordan River and extend through the project limits to 1905 West (Heather Way). The pipeline will be designed as a dry line with future connection to the wastewater treatment plant to be designed at a later date. Design of the secondary water transmission pipeline will be incorporated into the 60%, 95%, and Final Design Documents.
15. 60% Design Documents: Stanley Consultants will prepare 60% design documents of the proposed utility improvements (storm, sanitary sewer, and water). The 60% design will be a continuation of

the preliminary utility design prepared by Stanley Consultants. The 60% design will incorporate review comments received from the preliminary design submittal that is currently on going. The design will include a new outfall structure at Bicentennial Park along with a new pedestrian bridge structure along the Jordan River Parkway Trail over the Bateman Ditch. The new pedestrian bridge structure will be a prefabricated structure manufactured by Contech. Design tasks related to the pedestrian bridge structure will include coordination with the manufacturer, foundation design, and situation and layout drawings. 60% design documents will include drawings, specifications, and engineer's estimate of probable construction costs. A 60% design review meeting will be held at the City's office to review the drawings and receive review comments from the City.

Deliverable: 60% drawings and details, technical specification table of contents, and engineer's estimate of probable construction costs (20% contingency).

16. **95% Design Documents:** Stanley Consultants will prepare 95% design documents of the proposed utility improvements and pedestrian bridge structure. The 95% design will incorporate review comments received from the 60% design submittal. 95% design documents will include drawings, specifications, and engineer's estimate of probable construction costs. A 95% design review meeting will be held at the City's office to review the drawings and receive review comments from the City.

Deliverable: 95% drawings and details, technical specifications, and engineer's estimate of probable construction costs (15% contingency).

17. **Final Design Documents:** Stanley Consultants will prepare final design documents suitable for bidding of the proposed storm drainage, sanitary sewer, water improvements, and pedestrian bridge structure. The final design documents will incorporate comments received from the 95% design submittal. Final design documents will include drawings, specifications, and engineer's estimate of probable cost of construction. Specifications will include a bid schedule and a measurement and payment sections.

Deliverable: Bidding documents including final drawings and details, technical specifications, and engineer's estimate of probable construction costs (10% contingency).

18. **Bidding Services:** Stanley Consultants will assist the City through the bidding process by producing bidding documents, conducting a pre-bid meeting with contractors, answering questions and creating bid tabulation from the bid opening. Stanley Consultants will review all bids for completeness and recommend an award to the contractor with the lowest, responsive bid.

Deliverable: Bid tabulation and recommendation of award.

Deliverables

- Kick off meeting notes distributed electronically
- Project meeting notes and updates, distributed electronically
- Topographic and utility mapping data will be included in the base map. The base map will be shared electronically.
- Memorandum of video inspection review findings
- Utility locating findings
- Permit packages for submittal by the City
- CADD base map (AutoCAD Civil 3D) with utility data base, roadway alignments, and aerial imagery.
- 60% Design Submittal documents

July 21, 2015

Page 5

- 95% Design Submittal documents
- Final Design documents
- Final Storm and Sanitary Sewer model with summary of results
- Bid tabulation and recommendation letter

The design drawings will include:

- Cover sheet (1)
- Legend sheet (1)
- General notes sheet (1)
- Overall site plan sheet (1)
- Bicentennial Park site plan sheet (1)
- Survey control sheet (1)
- Recommended traffic control sheets (11)
- Concrete pavement panel sheet (4)
- Storm drain plan and profile sheets (11)
- Sanitary sewer plan and profile sheets (11)
- Water plan and profile sheets (5)
- Secondary Water Transmission Pipeline plan and profile sheets (11)
- Typical cross sections at key locations (4)
- Erosion and sediment control BMP's sheet (6 erosion control sheets and 1 detail)
- Jordan River Outlet Structure Site Plan (1)
- Flow Diversion Structure design and detail sheets (3)
- UDOT roadway detail sheets (10)
- Miscellaneous details sheets (10)
- Jordan River Trail Bridge site plan (1)
- Jordan River Trail Bridge footing/foundation plan (1)

Optional Services (not included in this Scope of Services):

1. Improvements to existing ADA facilities to conform to ADA requirements. All ADA ramps impacted by the project are to be replaced in kind.
2. Water quality analysis and design to determine if the 2-year storm diversion to the Bateman Pond is adequate to meet regulatory requirements.
3. Analysis of the proposed water system improvements to verify capacity.
4. Subsurface investigations (i.e. geotechnical investigations, etc.).
5. Pavement design or analysis.
6. Traffic modeling.
7. Development of plan set using UDOT standards.

Professional Services Fee

We propose to perform the Scope of Work for a not-to-exceed time and materials fee of **\$311,847.00**.

Refer to the attached fee estimate spreadsheets for more detailed information. We are available to begin work upon receipt of a notice to proceed.

July 21, 2015

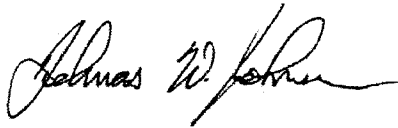
Page 6

Schedule

Stanley Consultants can begin work on this project immediately upon receipt of notice to proceed. The design portion is estimated to take 120 days to complete and the bidding services approximately 30 days. The proposed scope and fee assumes that Phases 1 and 2 will be designed independently.

Thank you for your consideration.

Respectfully,
Stanley Consultants, Inc.

A handwritten signature in black ink, appearing to read "Delmas W. Johnson". The signature is fluid and cursive, with a long horizontal stroke at the end.

Delmas W. Johnson, PE
Senior Project Manager

DJ:gt

Exhibit A
1300 West 7000 South

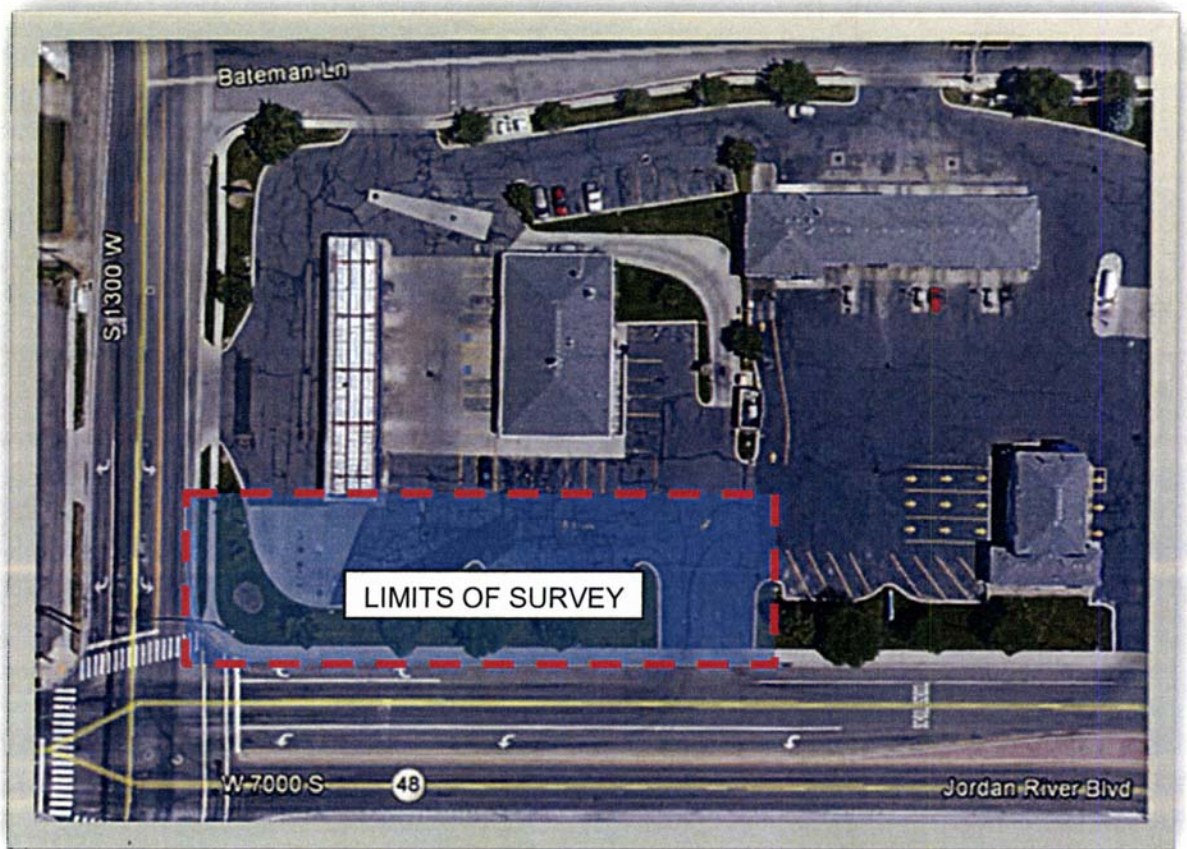


Exhibit B
North Jordan Canal to the Jordan River

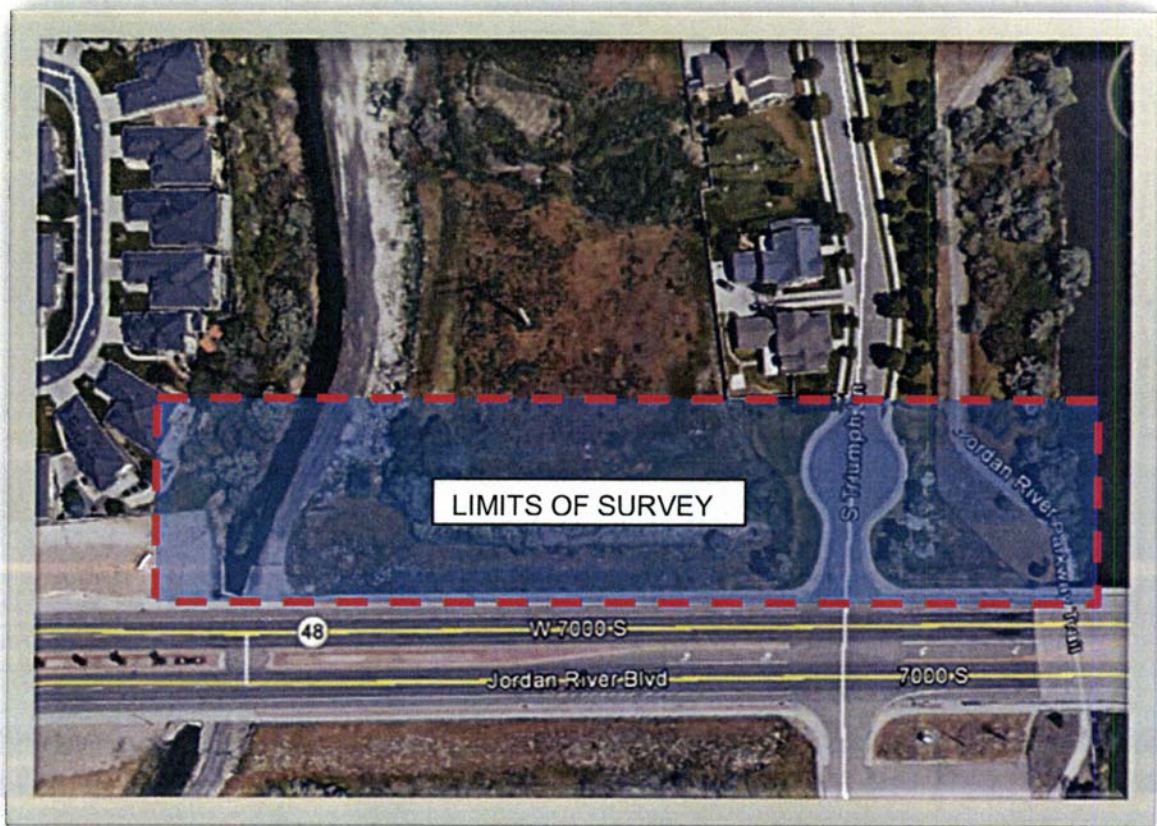


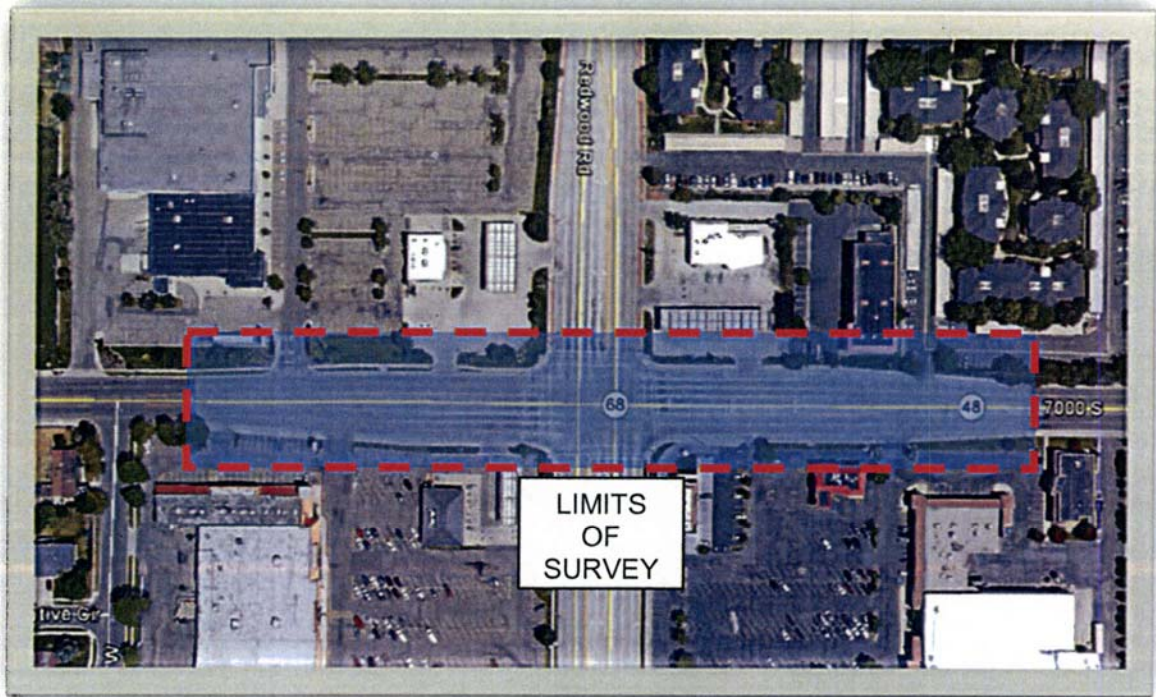
Exhibit C
1905 West and Bicentennial Park



Exhibit D
Jordan River Parkway Trail Bridge



Exhibit E
Concrete Panels in Redwood Road and 7000 South Street



Client: City of West Jordan
7000 S Final Utility Design – Phase 1 Jordan River to 1905 West (Heather Way)

Activity - Task Description	PRINCIPAL Mark Freeman	PROJECT MANAGER Chelsea Johnson	UTILITY ENGINEER LEAD Greg Thomas	STORM DRAINAGE ENGINEER David Osborne	PROJECT ENGINEER Jeff Wright	ROW Rita Baker	STRUCTURAL ENGINEER Amber Loft	SEWER STRUCTURAL ENGINEER Paul Brachman	JUNIOR ENGINEER Amanda Verfest	JUNIOR ENGINEER Caitlin Quaker	CONSTRUCTABILITY AND COST ESTIMATOR Jordan Hance	SURVEY MANAGER Craig Yates	FIELD SURVEY Ryan Theriault	CAD DESIGNER Heath Lopez	TOTAL HOURS	LOADED LABOR TOTAL LABOR
Final Design																
Project Management		140													140	\$22,120.00
Project Kickoff Meeting	1	2	2	2	2				1						10	\$1,410.00
Prepare Project Work Plan		2	2	2	2										8	\$1,152.00
Monthly Client Review Meetings	4	16	16	16	8				12	4					76	\$9,250.00
Survey (topographic and utility mapping)		2	20									24	140	18	202	\$25,000.00
Finalize Base Mapping		6	12	2	16				20						76	\$7,490.00
Review Storm Drain and Sanitary Sewer Video Inspection		2	12	2	8										24	\$1,614.00
Utility Investigation		2	12	2	8							2	12	8	38	\$4,114.00
Hydrologic Analyses of stormwater, routing and detention modeling		8		12	8				80						108	\$10,344.00
Engineering Analysis for Required Utility Capacities		2	4	8	8				40						62	\$6,220.00
Third Party Coordination		8	12	12	8									4	44	\$5,364.00
Finalize Easement Documents		2	4			80									24	\$12,820.00
Permitting		8	16	16	30							4			12	\$2,248.00
Design of Secondary Water Transmission Pipeline		10	28		40				80		2				80	\$21,240.00
60% Design Documents - Storm - Discharge to River and Impact Analysis	1	12	12	24	60		12	4		80					80	\$27,336.00
60% Design Documents - Sanitary Sewer		6	32		30				80						80	\$19,368.00
60% Design Documents - Water		8	12		20				48	20					40	\$17,144.00
60% Design Documents - Jordan River Trail Structure		2	8		12		50	8	40						20	\$13,360.00
95% Design Documents - Storm	1	8	20	24	30		8	2		60	2				20	\$16,278.00
95% Design Documents - Sanitary Sewer		6	20		20				40						20	\$10,728.00
95% Design Documents - Water		8	12		12				40	2					20	\$8,232.00
95% Design Documents - Jordan River Trail Structure		1	4		4		30	4	24						20	\$8,004.00
Final Design Documents - Storm	1	6	20	20	20		4	1		40	1				8	\$11,097.00
Final Design Documents - Sanitary Sewer		8	12		12				40						8	\$7,626.00
Final Design Documents - Water		6	12		12				40						8	\$7,626.00
Final Design Documents - Jordan River Trail Structure		1	4		16		16	4							8	\$5,574.00
Staging Services		6	8	8	12										8	\$2,184.00
Total Hours	8	280	284	150	380	80	120	33	487	284	12	30	182	804	2784	
Total Loaded Labor	\$1,440.00	\$44,240.00	\$36,950.00	\$73,100.00	\$48,360.00	\$10,080.00	\$17,860.00	\$4,301.00	\$38,766.00	\$22,720.00	\$2,280.00	\$4,980.00	\$13,880.00	\$25,200.00		\$288,067.00

Assumptions:
1. Up to 24 investigative utility boreholes by Cardno

DIRECT CHARGES	
Traffic Control (Urban Intersections)	\$4,400.00
Utility Locating (Cardno)	\$24,000.00
Mileage	\$440.00
Copies	\$750.00
UDOT ROW Encroachment Permits	\$300.00
SUB-TOTAL DIRECT CHARGES	\$29,890.00
GRAND TOTAL	\$318,957.00