

Draper City Wildlife Conservation Study

Introduction

Draper has a unique conservation opportunity; **it is the only community along the Wasatch Front with remnant foothill oak savannah and oak woodland habitat within its incorporated boundaries.** Other oak habitat along the Front has either been removed or is badly fragmented by urban development.

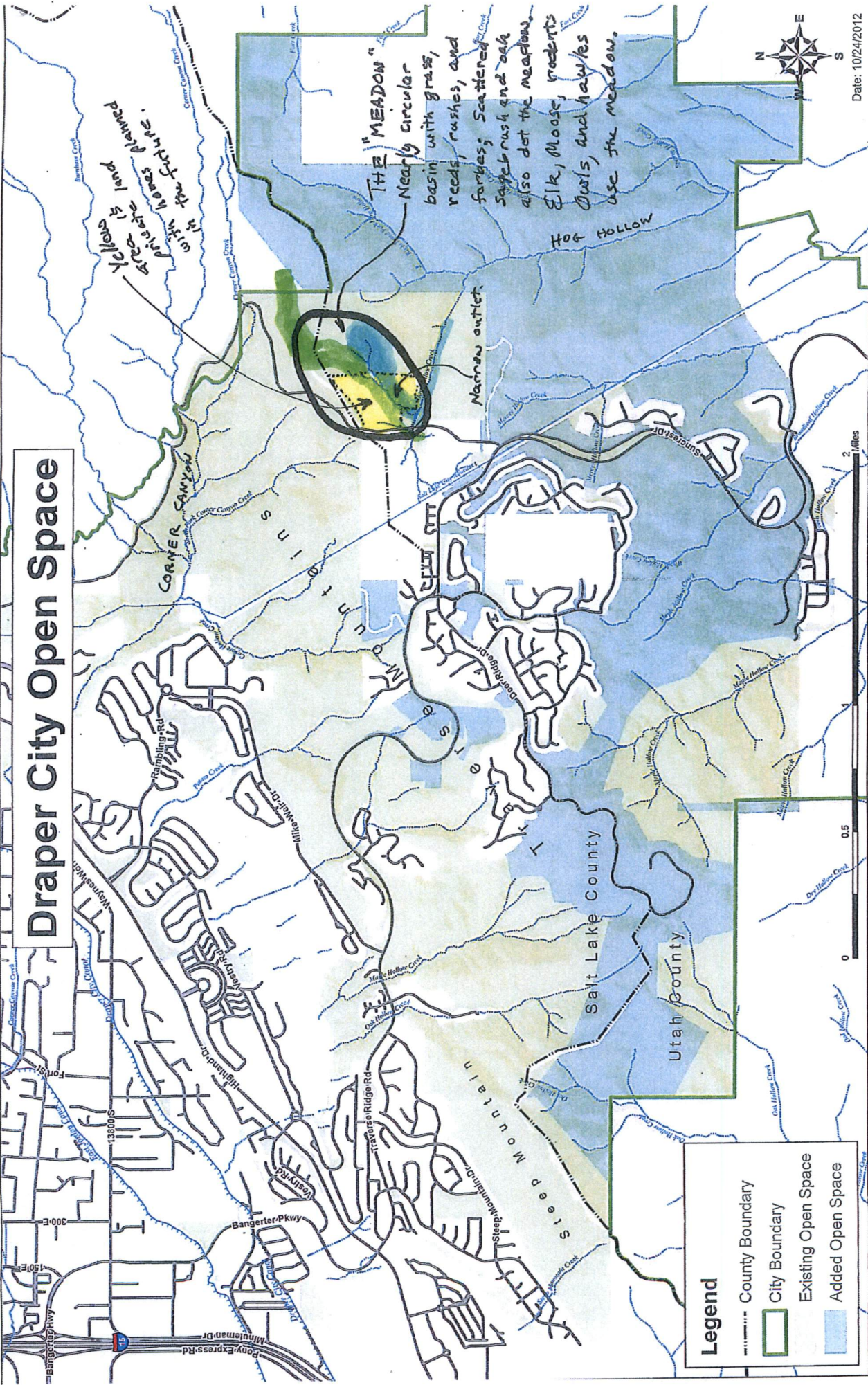
The oak savannah and woodland plant communities are home to a special wildlife community. Some community members include the Rufus-Sided Towhee, Blue-gray Gnatcatcher, Warbling Vireo, and Scrub Jay. In addition, the south and west facing slopes of the Traverse Mountains are critical winter range for mule deer, elk, and cougar that prey on them.

Historically, the Traverse Mountains have been a migration corridor from high elevation summer range to extensive winter range along and west of the Jordan River. The oak-dominated plant communities also play an important function in stabilizing the watershed above Draper.

These irreplaceable wildlife habitat and watershed resources are all in private ownership. Some areas are owned and managed to protect Draper's water supply, others are proposed for development. Draper's slope ordinance restricts from development an estimated 30-40% of Corner Canyon and the Traverse Mountains. The remaining 60-70% could be developed under current zoning. The challenge for the City will be to protect habitat patches and link them with corridors wide enough to facilitate wildlife movement through the landscape. Corridor linkage to the Wasatch/Cache National Forest is essential.

Recreational activity in Corner Canyon and the Traverse Mountains is high and demand is increasing. Local, county and regional trails will have to be skillfully sited so that they do not further fragment wildlife habitat. **With thoughtful planning and design, wildlife and human activity can co-exist in the Traverse Mountains.** The wildlife resource that Draper residents have come to value **can be passed on to future generations,** but Draper residents must act now before options are eliminated.

Draper City Open Space

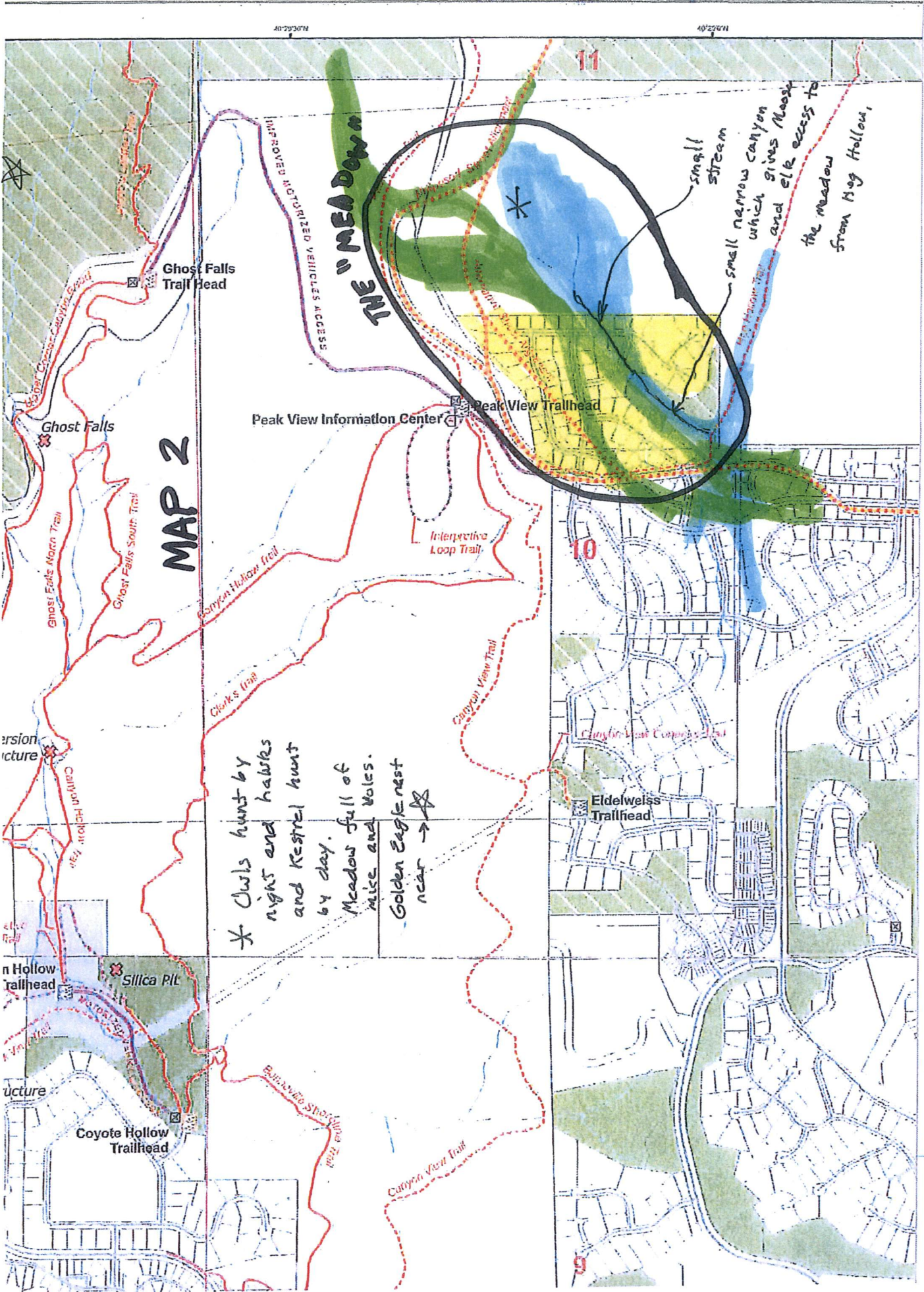


Date: 10/24/2012

JML 5/23/14

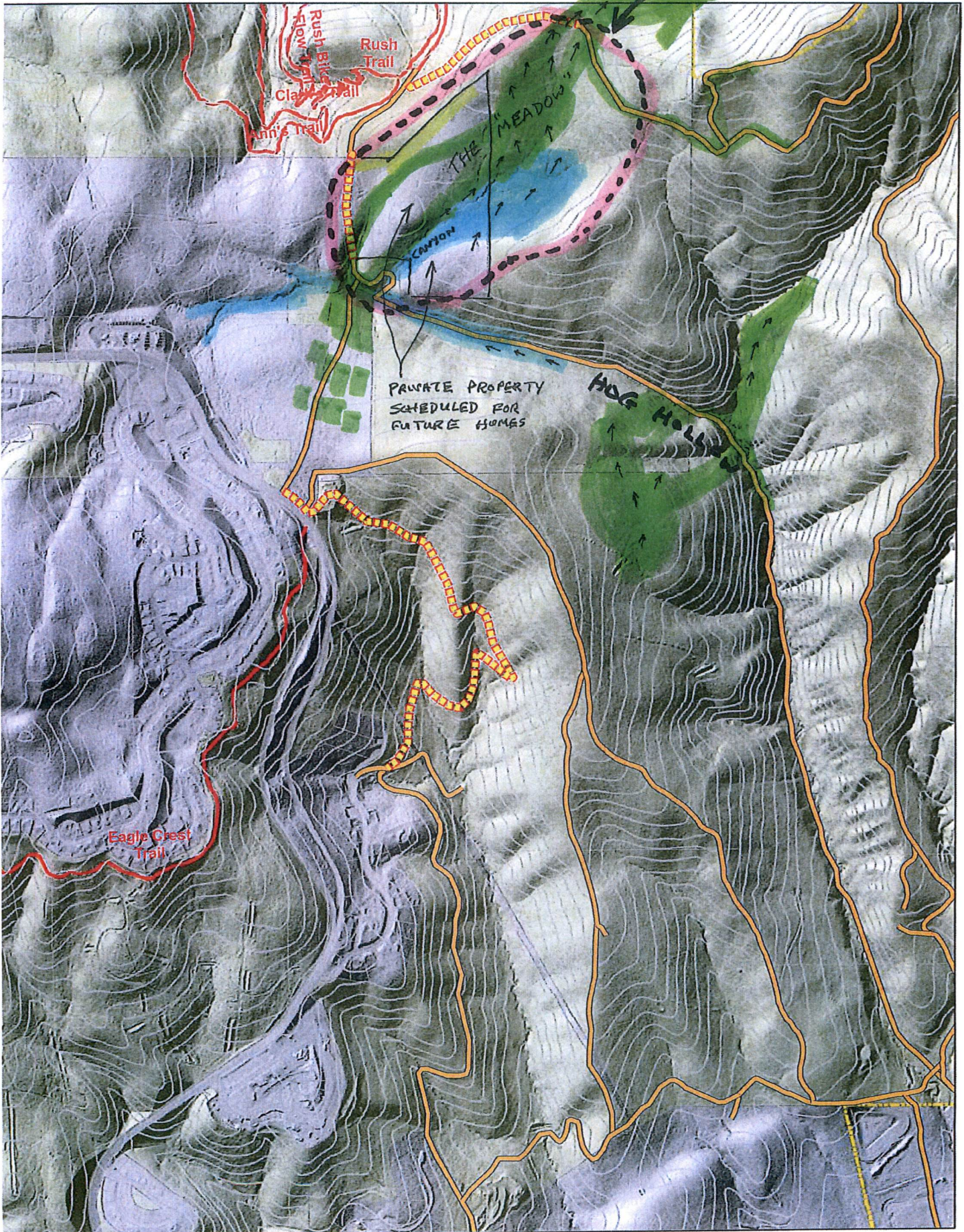
MAP 1

- ELK
- MOOSE



Moose

Elk



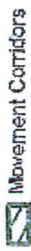
Moose

ELK

MARCH & MAY 2014

SunCrest - Recommended Wildlife Movement Corridors

Legend



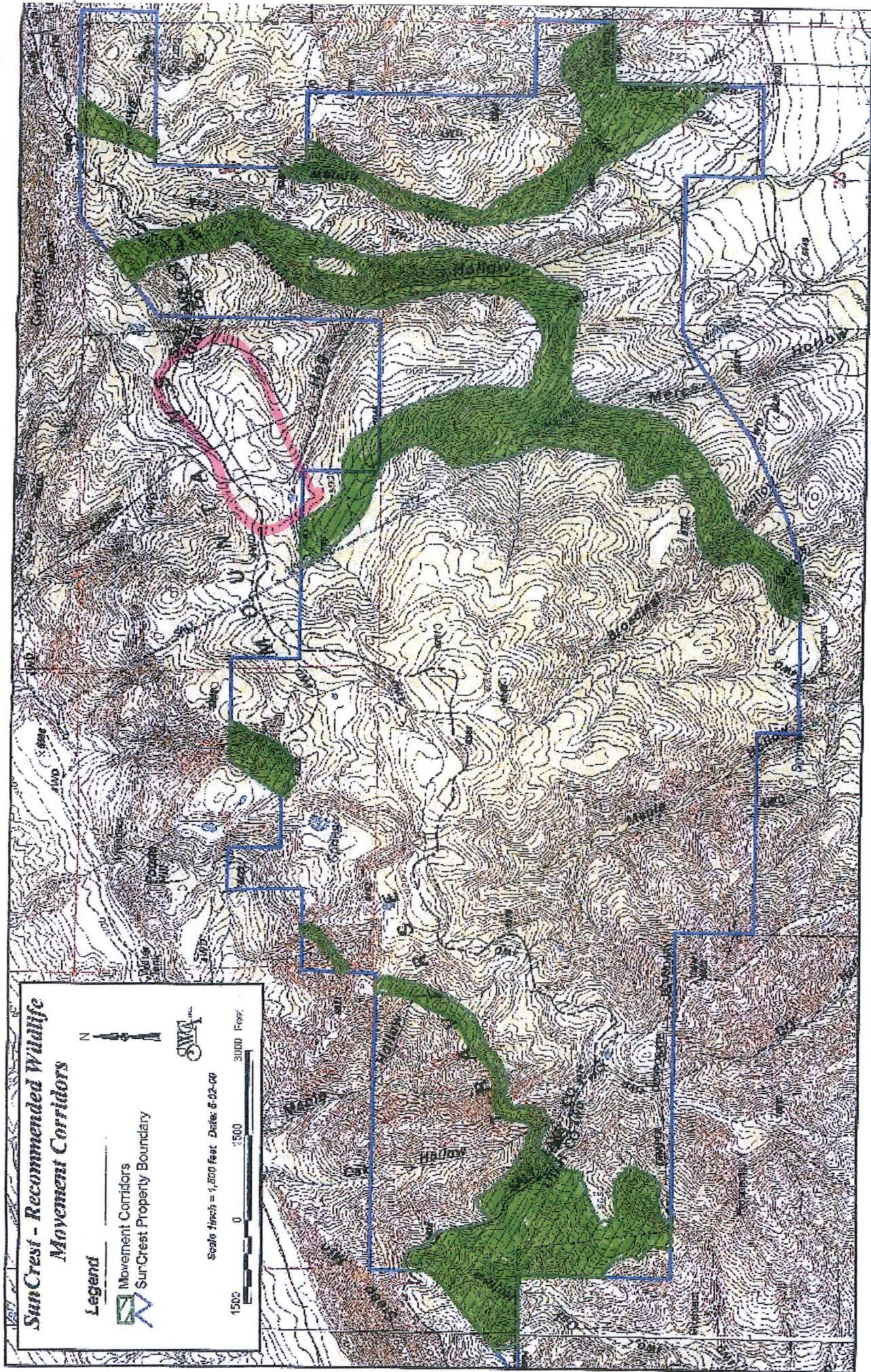
Movement Corridors

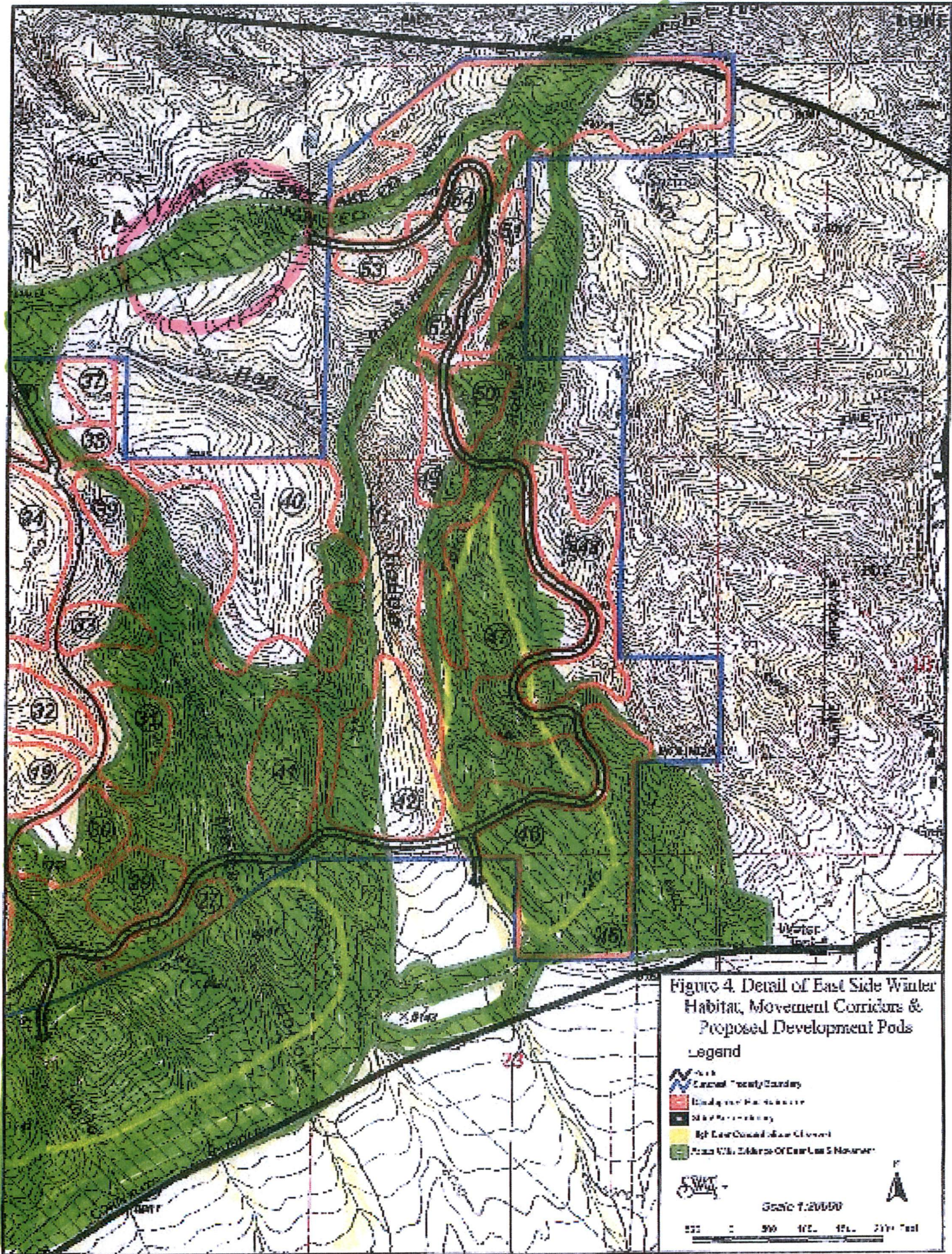


SurCrest Property Boundary



Scale 1 inch = 1,500 feet. Date: 5-02-00





The Wabbit / Hobbit House

The challenge is come up with an original design for a Hobbit House that will serve as a small annex to the Draper Corner Canyon Nature Center. Its purpose specifically will be as an educational exhibit for the underground creatures directly to the south of the nature center.

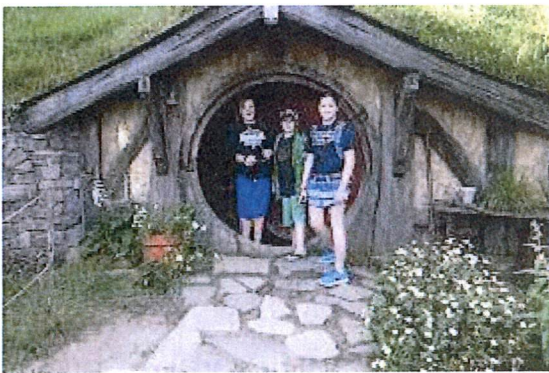
LOCATION: This little Hobbit Hole will be built partly into the hill on its north. The Hobbit center can be to the left or right of the nature center, depending upon where the nature center is located exactly. It will face the meadow which is downhill and to the south.

PURPOSE: The purpose of this small exhibit will be to identify through posters or models the small mammals (mice, rabbits, voles) that live in tiny burrows in the meadow in front of the center, and in other areas of the open space. It will also explain through diagrams or dioramas the importance of these critters as a prey base for the hawks, falcons, owls, bobcats, and coyotes that also occupy the park; without these critters, there would be none of these other animals. On the other hand, without the hawks, owls, and bobcats, these critters would explode in population. The exhibit will also explain why motorized vehicles and bicycles must stay off the meadow and stay on the existing roads and trails, to avoid crushing the burrows or packing the earth too tightly.

SPECIFICATIONS: The exhibit hall should have no parallel walls nor corners. There may be corners, but none at 90 degree angles. All walls and supports must not be exactly vertical.

ADDITIONAL AMENITY: There should be side exit should be a rambling tunnel made of large concrete sewer pipes (perhaps) that fork once or twice as though it was a rodent's back door escape tunnel, to help visitors, especially children, to relate to the 'wee widdle wodents' down in the meadow. There should be little windows. This tunnel can actually be on top or half-buried in the hill-side.

Pictured below are some examples of entrances for the Hobbit Exhibition home.





© Shireto Eyr
Dreamline.com



N ↑

PEAK LONE PEAK

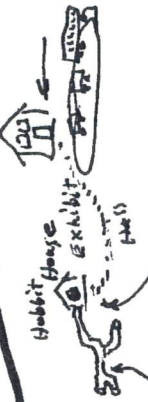
Antelope Island

DRAPER

PEAK VIEW

Peak View Trail Head

Nature Center



Habbit (Wabbit) House of

With view of mouse meadow Explains what goes on in meadow



VOLE/MOUSE BURROWS



OWLS



MAST'S PROPERTIES

JMR 8/7/14