



# PRO - SCOTSMAN

APPLICANT:  
VERIZON WIRELESS  
9656 SOUTH PROSPERITY ROAD  
WEST JORDAN, UTAH 84088

**SITE ADDRESS:**  
1655 WEST 1130 SOUTH  
PAYSON, UTAH 84651

**ZONING JURISDICTION:**  
**PAYSON CITY**

**PROJECT DESCRIPTION:**  
VZW IS PROPOSING TO CONSTRUCT AN UNMANNED COMMUNICATIONS FACILITY  
CONSISTING OF ANTENNAS MOUNTED TO A NEW MONOPOLE WITH EQUIPMENT  
LOCATED INSIDE A 11'-6" X 25'-5.5" PREFABRICATED EQUIPMENT SHELTER

**TYPE OF CONSTRUCTION:**  
**PRE-FAB SHELTER, MONOPOLE, AND ANTENNAS**

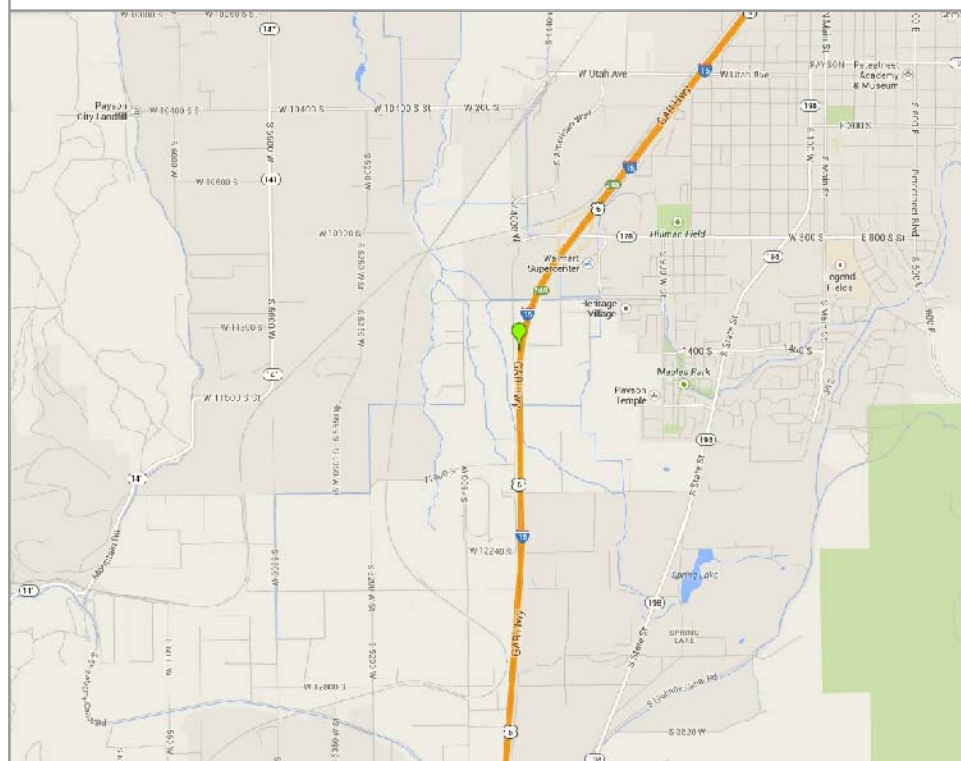
**HANDICAP REQUIREMENTS:**  
FACILITY IS UNMANNED AND NOT FOR HUMAN HABITATION, HANDICAP ACCESS  
REQUIREMENTS DO NOT APPLY

**POWER COMPANY:**  
**ROCKY MOUNTAIN POWER, 1-888-221-7070**

## CONTACT INFORMATION

**SITE ACQUISITION:**  
TECHNOLOGY ASSOCIATES EC, INC  
5710 SOUTH GREEN STREET  
SALT LAKE CITY, UTAH 84123  
CONTACT: DAKOTA HAWKS  
PHONE: 801-651-4769

## LOCATION MAP



**DO NOT SCALE DRAWINGS**

CONTRACTOR SHALL VERIFY ALL PLANS, AND EXISTING DIMENSIONS, AND CONDITIONS ON THE JOB SITE, AND SHALL IMMEDIATELY NOTIFY THE ENGINEER IN WRITING OF ANY DISCREPANCIES BEFORE PROCEEDING WITH THE WORK OR BE RESPONSIBLE FOR SAME

## DRIVING DIRECTIONS

FROM THE VZW WEST JORDAN OFFICES, TAKE I-15 SOUTH TO PAYSON EXIT #248. TURN RIGHT AND GO WEST ON 10900 SOUTH FOR 0.2 MILES TO 1700 WEST. TURN LEFT AND GO SOUTH ON 1700 WEST FOR 0.3 MILES TO 11200 SOUTH. TURN LEFT AND GO EAST ON 11200 SOUTH TO THE END OF THE ROAD AND THE SITE WILL BE ON THE RIGHT HAND SIDE OF THE ROAD UP AGAINST I-15.

## APPROVALS

**VERIZON WIRELESS REPRESENTATIVE:**

**VERIZON WIRELESS RF ENGINEER:**

**TAEC SITE ACQUISITION:**

**TAEC CONSTRUCTION MANAGER:**

SITE OWNER:

## DRAWING INDEX

[illegible]

**UNDERGROUND SERVICE ALERT, CALL 'BLUE STAKES OF UTAH' @ 811 OR 1-800-662-4111**  
THREE WORKING DAYS BEFORE YOU DIG



**VERIZON WIRELESS**  
9656 SOUTH PROSPERITY ROAD  
WEST JORDAN, UTAH 84088

**TAE C**

Technology Associates Engineering Corporation Inc.  
**TECHNOLOGY ASSOCIATES**

UTAH MARKET OFFICE  
5710 SOUTH GREEN STREET  
SALT LAKE CITY, UTAH 84123

CORPORATE OFFICE  
3115 SOUTH MELROSE DRIVE, SUITE #110  
CARLSBAD, CALIFORNIA 92010

DRAWN BY: JAY C

CHECKED BY: DAKOTA H

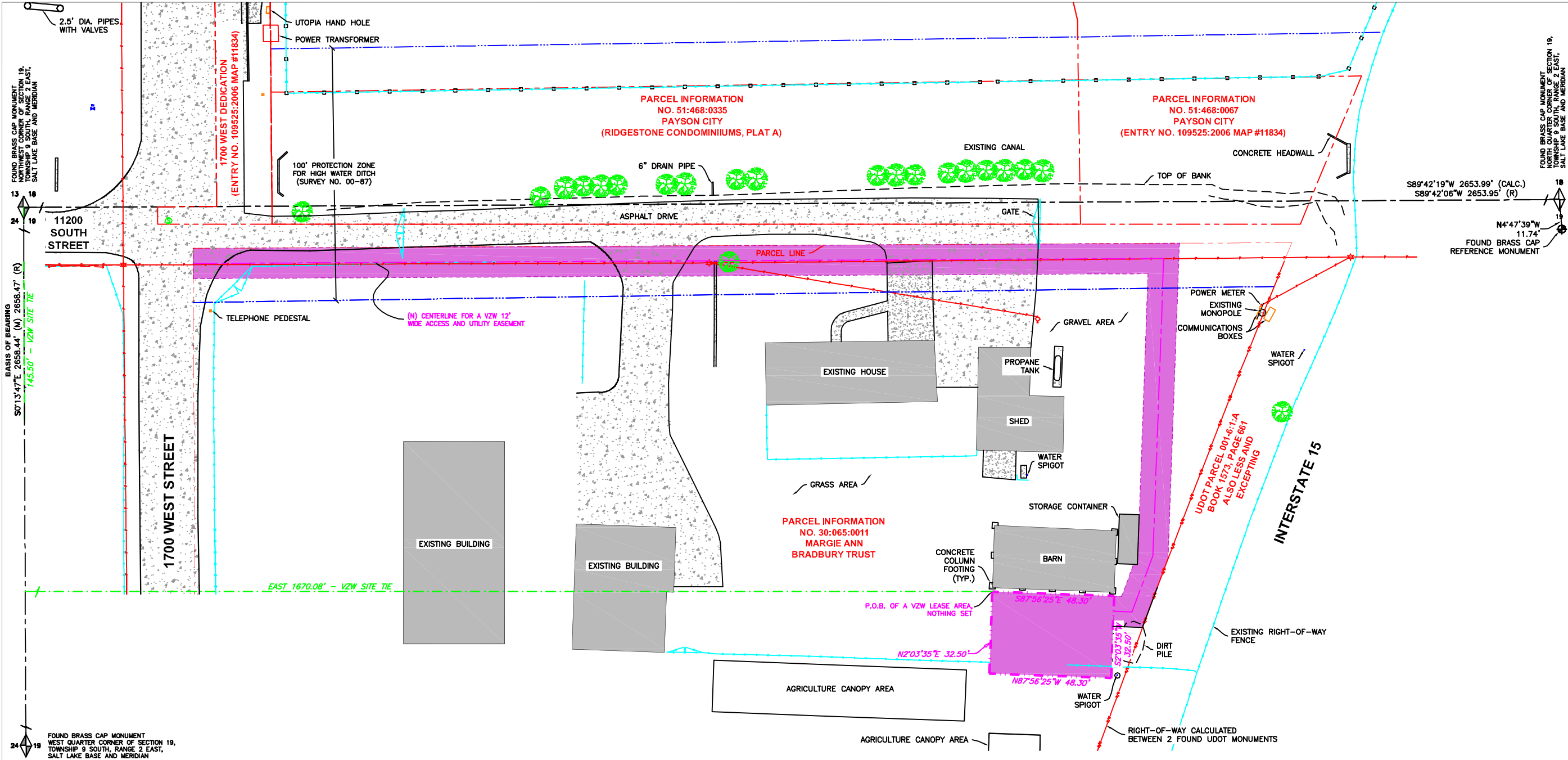
[illegible]

PRO - SCOTSMAN  
NW SEC 19, T9S, R2E  
1655 WEST 1130 SOUTH  
PAYSON, UTAH 84651  
-- RAWLAND SITE --

**SHEET TITLE**  
**TITLE SHEET**  
**VICINITY MAP**  
**GENERAL INFORMATION**

SHEET NUMBER

# T100



NARRATIVE:

(1) THE PURPOSE OF THIS SURVEY IS TO LOCATE AND SURVEY A PROPOSED COMMUNICATIONS TOWER SITE.

(2) THE BASIS OF BEARING USED FOR THIS SURVEY IS AS SHOWN ON THIS PLAT, FROM FOUND MONUMENTS AS LOCATED IN THE FIELD.

(M) = MEASURED BEARING OR DISTANCE.  
(R) = RECORDED BEARING OR DISTANCE.  
(CALC) = CALCULATED BEARING OR DISTANCE

(3) REFERENCE PLATS:

(A) RIDGESTONE CONDOMINIUMS PLAT A, ENTRY NO. 109522:2006 MAP #11833 DATED AUGUST 23, 2006.

(B) PAYSON CITY DEDICATION PLAT, ENTRY NO. 109525:2006 MAP #11834 DATED AUGUST 9, 2006.

(C) SURVEY NO. 00-87, ALTA SURVEY FOR PROJECT MANAGEMENT INC., DATED NOVEMBER 12, 1999.

(D) U.D.O.T. PROJECT F-001-6(16) RIGHT-OF-WAY PLAN SHEET 4 SOUTH PAYSON INTERCHANGE, DATED NOVEMBER 30, 1976.

(4) SCHEDULE B NOTES:

BONNEVILLE SUPERIOR TITLE COMPANY COMMITMENT NO. 01459-5371, DATED FEBRUARY 13, 2013.

(A) PARCEL LINES DO NOT MATCH OCCUPATION.

(B) ITEM 15 - UTAH WATER AND POWER BOARD EASEMENT IN ENTRY NO. 7874, BOOK 875 AT PAGE 163, DOES NOT DESCRIBE AN EXACT AREA AND THEREFORE IS NOT SHOWN ON THIS SURVEY. (BLANK EASEMENT).

(C) ITEM 16 - QUIT CLAIM DEED IN ENTRY NO. 25921 IN BOOK 1573 AT PAGE 661 RELINQUISHES ACCESS ALONG INTERSTATE 15. AREA DESCRIBED IS LESS AND EXCEPTING PARCEL (SHOWN ON PLAT)

INFORMATION FOR THE CENTER OF THE VZW LEASE AREA

STATE PLANE COORDINATES - NAD 83 (FT)  
NORTHING=7178343.58, EASTING=1567048.69

GEODETIC COORDINATES - NAD 83  
LATITUDE = N 40°01'34.01"  
LONGITUDE = W 111°45'43.20"

GROUND ELEVATION - NAVD88  
4633.18' A.M.S.L.

STATE OF UTAH, CENTRAL ZONE

CERTIFICATE OF SURVEY:

I, JERRY FLETCHER, PROFESSIONAL LAND SURVEYOR, STATE OF UTAH, LICENSE NUMBER 6436064, CERTIFY THAT I HAVE SUPERVISED A SURVEY ON THE GROUND AS SHOWN HEREON:

VERIZON WIRELESS LEASE SITE DESCRIPTION:

LOCATED IN THE NORTHWEST QUARTER OF SECTION 19, TOWNSHIP 9 SOUTH, RANGE 2 EAST, SALT LAKE BASE AND MERIDIAN, UTAH COUNTY, STATE OF UTAH, AND BEING MORE PARTICULARLY DESCRIBED AS FOLLOWS:

BEGINNING AT A POINT LOCATED SOUTH 00°13'47" EAST 145.50 FEET ALONG SECTION LINE AND EAST 1670.08 FEET FROM THE NORTHWEST CORNER OF SECTION 19, TOWNSHIP 9 SOUTH, RANGE 2 EAST, SALT LAKE BASE AND MERIDIAN AND RUNNING THENCE SOUTH 87°56'25" EAST 48.30 FEET; THENCE SOUTH 02°03'35" WEST 32.50 FEET; THENCE NORTH 87°56'25" WEST 48.30 FEET; THENCE NORTH 02°03'35" EAST 32.50 FEET TO THE POINT OF BEGINNING.

CONTAINS: 1570 SQ. FT. OR 0.036 ACRES, MORE OR LESS, (AS DESCRIBED).

VERIZON WIRELESS ACCESS AND UTILITY EASEMENT DESCRIPTION:

A 12 FOOT WIDE ACCESS AND UTILITY EASEMENT FOR THE PURPOSE OF INGRESS AND EGRESS, AND INSTALLING UNDERGROUND UTILITIES, BEING 6 FEET ON EACH SIDE OF THE FOLLOWING DESCRIBED CENTERLINE:

BEGINNING AT A POINT LOCATED SOUTH 00°13'47" EAST 153.23 FEET ALONG SECTION LINE AND EAST 1718.10 FEET FROM THE NORTHWEST CORNER OF SECTION 19, TOWNSHIP 9 SOUTH, RANGE 2 EAST, SALT LAKE BASE AND MERIDIAN AND RUNNING THENCE SOUTH 87°56'25" EAST 7.31 FEET; THENCE ALONG A 5107.37 FOOT RADIUS CURVE TO THE RIGHT A DISTANCE OF 23.73 FEET, (CHORD BEARS NORTH 20°30'58" EAST 23.73 FEET); THENCE NORTH 02°03'35" EAST 117.79 FEET; THENCE SOUTH 89°42'19" WEST 384.89 FEET, MORE OR LESS TO EAST RIGHT-OF-WAY LINE OF 1700 WEST STREET AND TERMINATING.

CONTAINS: 0.146 ACRES, MORE OR LESS, (AS DESCRIBED).

VERIZON WIRELESS  
9656 SOUTH PROSPERITY ROAD  
WEST JORDAN, UTAH 84088

TAEC  
Technology Associates Engineering Corporation  
TECHNOLOGY ASSOCIATES

UTAH MARKET OFFICE  
5710 SOUTH GREEN STREET  
SALT LAKE CITY, UTAH 84123

CORPORATE OFFICE  
3115 SOUTH MELROSE DRIVE, SUITE #110  
CARLSBAD, CALIFORNIA 92010

SURVEY PREPARED BY:

SUPERIOR SURVEYING, LLC

PHONE: 801-230-8968  
EMAIL: JERRY@SUPERIOR-SURVEYING.COM

PROJECT NO: 02-14-40

DRAWN BY: JERRY F

CHECKED BY: JERRY F

REV	DATE	DESCRIPTION
1	04-21-2014	REVISE SURVEY
0	03-24-2014	SITE SURVEY

PRO SCOTSMAN  
NW SEC 19, T9S, R2E  
1655 WEST 1130 SOUTH  
PAYSON, UT 84651  
-- RAWLAND SITE --

SHEET TITLE  
SITE SURVEY

SHEET NUMBER  
SURV

TRUE NORTH  
MAGNETIC NORTH  
11.6°

NORTH

GRAPHIC SCALE  
20 10 0 10 20  
(IN FEET) 1" = 20'-0"

ASAC INFORMATION SHEET 91:003

INFORMATION REGARDING SURVEY DATA SUBMITTED TO THE FAA

FAA Order 8260.19c requires proponents of certain proposed construction (located beneath instrument procedures) provide the FAA with a site survey and/or letter, from a licensed land surveyor, which certifies the site coordinates and the surface elevation at the site. On October 15, 1992, the FAA started using the North American Datum of 1983 (NAD-83), and therefore all site coordinates should be based on NAD-83. The FAA requires that the survey letter contain an accuracy statement that meets accuracy tolerances required by the FAA. The most requested tolerances are +/- 50 feet in the horizontal and +/- 20 feet in the vertical (2-C). When the site coordinates and/or site elevation can be certified to a greater accuracy than requested by the FAA, please do so.

In order to avoid FAA processing delays, the original site survey or certifying letter should be attached to the 7460 when it is filed at the FAA's regional office. It must be signed and sealed by the licensed land surveyor having performed or supervised the survey.

The FAA accuracy codes and a sample accuracy statement are listed below.

ACCURACY CODES:

<u>HORIZONTAL</u>		<u>VERTICAL</u>	
<u>Code</u>	<u>Tolerance</u>	<u>Code</u>	<u>Tolerance</u>
1	+/- 15 ft	A	+/- 3 ft
2	+/- 50 ft	B	+/- 10 ft
3	+/- 100 ft	C	+/- 20 ft
4	+/- 250 ft	D	+/- 50 ft
5	+/- 500 ft	E	+/- 125 ft
6	+/- 1000 ft	F	+/- 250 ft
7	+/- 1/2 NM	G	+/- 500 ft
8	+/- 1 NM	H	+/- 1000 ft
9	Unknown	I	Unknown

Date: APRIL 28, 2014

Re: PRO SCOTSMAN

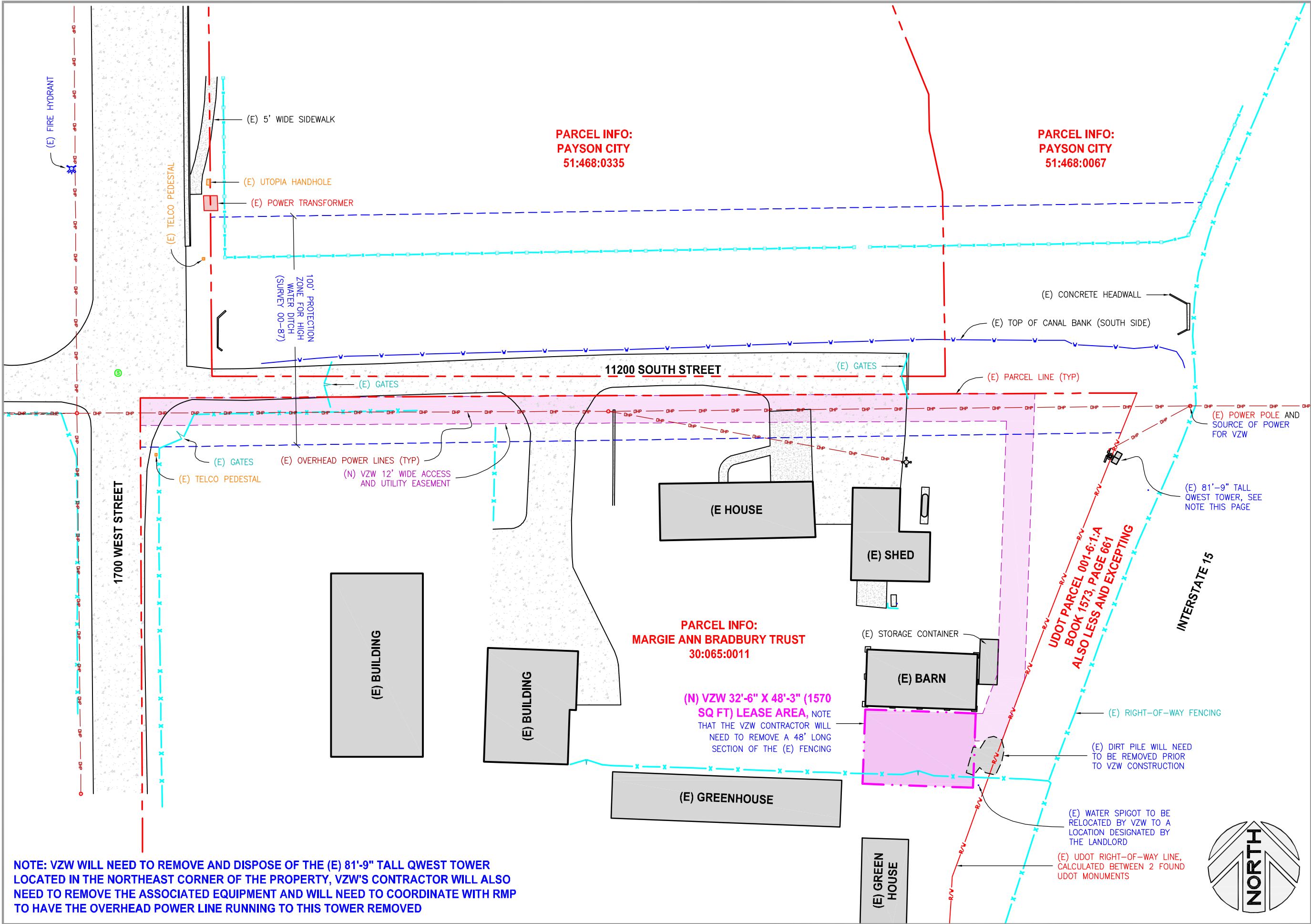
NW 1/4 OF SECTION 19, TOWNSHIP 9 SOUTH, RANGE 2 EAST, SALT LAKE MERIDIAN  
1655 WEST 1130 SOUTH, PAYSON, UTAH 84651

I certify that the latitude of N 40°01'34.01", and the longitude of W 111°45'43.20", are accurate to within 15 feet horizontally and the site elevation of 4633.18 feet, AMSL (American Mean Sea Level), is accurate to within +/- 3 feet vertically. The horizontal datum (coordinates) are in terms of the North American Datum of 1983 (NAD-83) and are expressed as degrees, minutes and seconds, to the nearest (tenth/hundredth) of a second. The vertical datum (heights) are in terms of the (NAVD88) and are determined to the nearest foot.



Professional Licensed Land Surveyor:  
1-A FAA Letter

Jerry Fletcher, Utah LS no. 6436064



**verizon**  
wireless

VERIZON WIRELESS  
9656 SOUTH PROSPERITY ROAD  
WEST JORDAN, UTAH 84088

**TAEC**

Technology Associates Engineering Corporation Inc.

**TECHNOLOGY ASSOCIATES**

UTAH MARKET OFFICE  
5710 SOUTH GREEN STREET  
SALT LAKE CITY, UTAH 84123

CORPORATE OFFICE  
3115 SOUTH MELROSE DRIVE, SUITE #110  
CARLSBAD, CALIFORNIA 92010

DRAWN BY: JAY C

CHECKED BY: DAKOTA H

1	05.05.2014	REVISED ANTENNAS
0	04.29.2014	ZONING DRAWINGS
REV	DATE	DESCRIPTION

**PRO - SCOTSMAN**  
NW SEC 19, T9S, R2E  
1655 WEST 1130 SOUTH  
PAYSON, UTAH 84651  
-- RAWLAND SITE --

SHEET TITLE

**OVERALL SITE PLAN**

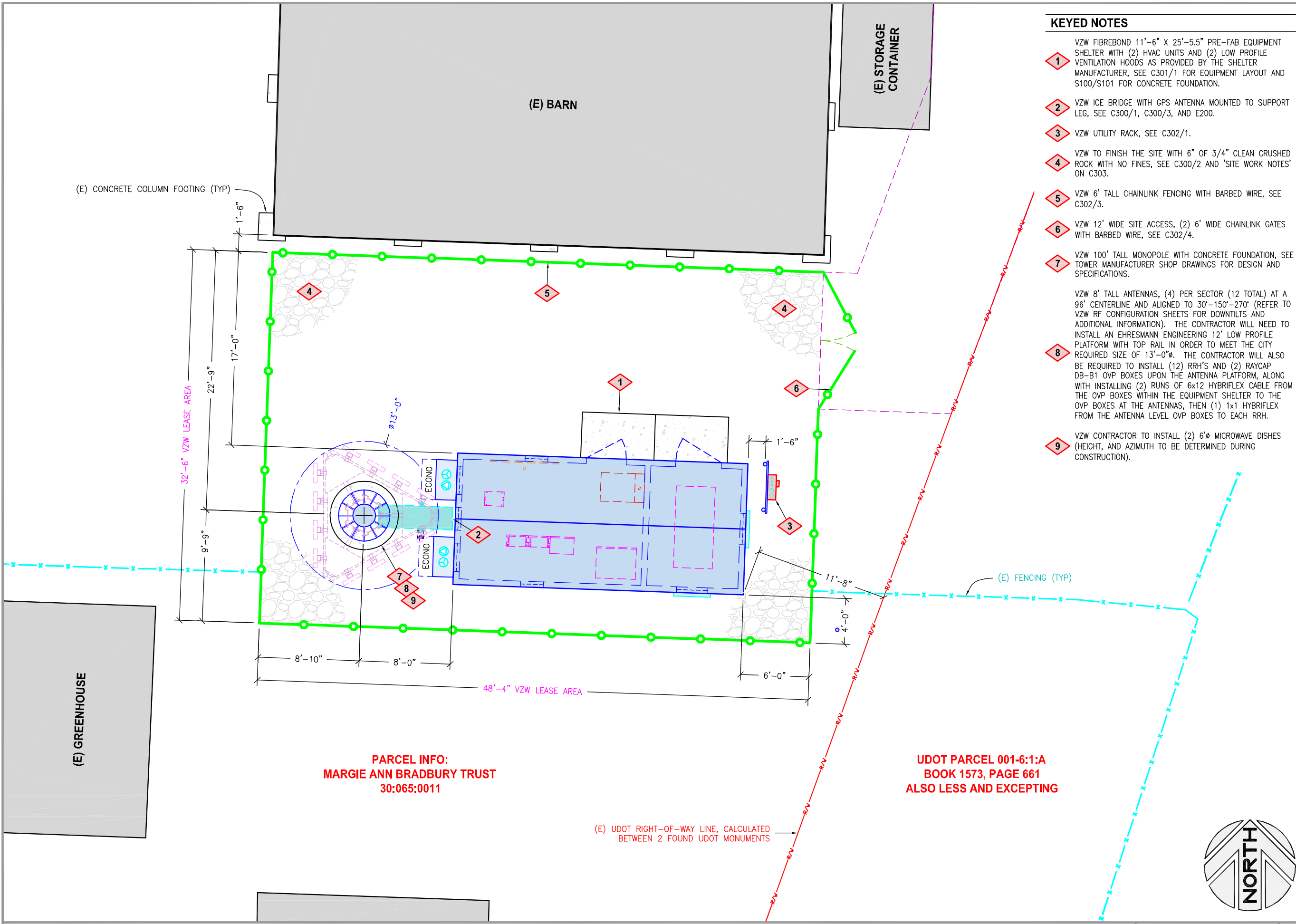
SHEET NUMBER

**C100**

SCALE: 1/4" = 10'-0"

1





KEYED NOTES

- 1 VZW FIBREBOND 11'-6" X 25'-5.5" PRE-FAB EQUIPMENT SHELTER WITH (2) HVAC UNITS AND (2) LOW PROFILE VENTILATION HOODS AS PROVIDED BY THE SHELTER MANUFACTURER, SEE C301/1 FOR EQUIPMENT LAYOUT AND S100/S101 FOR CONCRETE FOUNDATION.
- 2 VZW ICE BRIDGE WITH GPS ANTENNA MOUNTED TO SUPPORT LEG, SEE C300/1, C300/3, AND E200.
- 3 VZW UTILITY RACK, SEE C302/1.
- 4 VZW TO FINISH THE SITE WITH 6" OF 3/4" CLEAN CRUSHED ROCK WITH NO FINES, SEE C300/2 AND 'SITE WORK NOTES' ON C303.
- 5 VZW 6' TALL CHAINLINK FENCING WITH BARBED WIRE, SEE C302/3.
- 6 VZW 12' WIDE SITE ACCESS, (2) 6' WIDE CHAINLINK GATES WITH BARBED WIRE, SEE C302/4.
- 7 VZW 100' TALL MONOPOLE WITH CONCRETE FOUNDATION, SEE TOWER MANUFACTURER SHOP DRAWINGS FOR DESIGN AND SPECIFICATIONS.
- 8 VZW 8' TALL ANTENNAS, (4) PER SECTOR (12 TOTAL) AT A 96' CENTERLINE AND ALIGNED TO 30'-150'-270' (REFER TO VZW RF CONFIGURATION SHEETS FOR DOWNTILTS AND ADDITIONAL INFORMATION). THE CONTRACTOR WILL NEED TO INSTALL AN EHRESMANN ENGINEERING 12' LOW PROFILE PLATFORM WITH TOP RAIL IN ORDER TO MEET THE CITY REQUIRED SIZE OF 13'-0"Ø. THE CONTRACTOR WILL ALSO BE REQUIRED TO INSTALL (12) RRH'S AND (2) RAYCAP DB-B1 OVP BOXES UPON THE ANTENNA PLATFORM, ALONG WITH INSTALLING (2) RUNS OF 6x12 HYBRIFLEX CABLE FROM THE OVP BOXES WITHIN THE EQUIPMENT SHELTER TO THE OVP BOXES AT THE ANTENNAS, THEN (1) 1x1 HYBRIFLEX FROM THE ANTENNA LEVEL OVP BOXES TO EACH RRH.
- 9 VZW CONTRACTOR TO INSTALL (2) 6'Ø MICROWAVE DISHES (HEIGHT, AND AZIMUTH TO BE DETERMINED DURING CONSTRUCTION).



VERIZON WIRELESS  
9656 SOUTH PROSPERITY ROAD  
WEST JORDAN, UTAH 84088

TAEC  
Technology Associates Engineering Corporation Inc.  
TECHNOLOGY ASSOCIATES

UTAH MARKET OFFICE  
5710 SOUTH GREEN STREET  
SALT LAKE CITY, UTAH 84123  
  
CORPORATE OFFICE  
3115 SOUTH MELROSE DRIVE, SUITE #110  
CARLSBAD, CALIFORNIA 92010

DRAWN BY: JAY C  
CHECKED BY: DAKOTA H

1	05.05.2014	REVISED ANTENNAS
0	04.29.2014	ZONING DRAWINGS
REV	DATE	DESCRIPTION

PRO - SCOTSMAN  
NW SEC 19, T9S, R2E  
1655 WEST 1130 SOUTH  
PAYSON, UTAH 84651  
-- RAWLAND SITE --

SHEET TITLE  
ENLARGED SITE PLAN

SHEET NUMBER  
C101

KEYED NOTES

- 1

VZW FIBREBOND 11'-6" X 25'-5.5" PRE-FAB EQUIPMENT SHELTER WITH (2) HVAC UNITS AND (2) LOW PROFILE VENTILATION HOODS AS PROVIDED BY THE SHELTER MANUFACTURER, SEE C301/1 FOR EQUIPMENT LAYOUT AND S100/S101 FOR CONCRETE FOUNDATION.
- 2

VZW 6' TALL CHAINLINK FENCING WITH BARBED WIRE, SEE C302/3.
- 3

VZW 12' WIDE SITE ACCESS, (2) 6' WIDE CHAINLINK GATES WITH BARBED WIRE, SEE C302/4.
- 4

VZW 100' TALL MONOPOLE WITH CONCRETE FOUNDATION, SEE TOWER MANUFACTURER SHOP DRAWINGS FOR DESIGN AND SPECIFICATIONS.
- 5

VZW 8' TALL ANTENNAS, (4) PER SECTOR (12 TOTAL) AT A 96' CENTERLINE AND ALIGNED TO 30°-150°-270° (REFER TO VZW RF CONFIGURATION SHEETS FOR DOWNTILTS AND ADDITIONAL INFORMATION). THE CONTRACTOR WILL NEED TO INSTALL AN EHRESMANN ENGINEERING 12' LOW PROFILE PLATFORM WITH TOP RAIL IN ORDER TO MEET THE CITY REQUIRED SIZE OF 13'-0"Ø. THE CONTRACTOR WILL ALSO BE REQUIRED TO INSTALL (12) RRH'S AND (2) RAYCAP DB-B1 OVP BOXES UPON THE ANTENNA PLATFORM, ALONG WITH INSTALLING (2) RUNS OF 6x12 HYBRIFLEX CABLE FROM THE OVP BOXES WITHIN THE EQUIPMENT SHELTER TO THE OVP BOXES AT THE ANTENNAS, THEN (1) 1x1 HYBRIFLEX FROM THE ANTENNA LEVEL OVP BOXES TO EACH RRH.
- 6

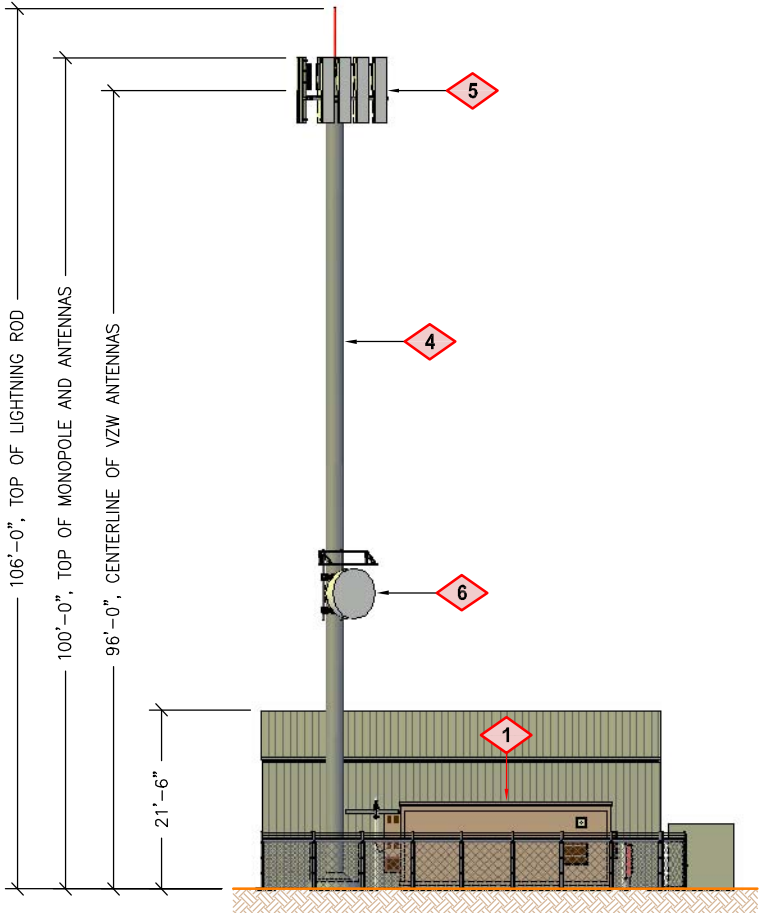
VZW CONTRACTOR TO INSTALL (2) 6'Ø MICROWAVE DISHES (HEIGHT, AND AZIMUTH TO BE DETERMINED DURING CONSTRUCTION).
- 7

VZW CONTRACTOR TO INSTALL THE 6' TALL LIGHTNING ROD AS SUPPLIED BY TOWER MANUFACTURER.

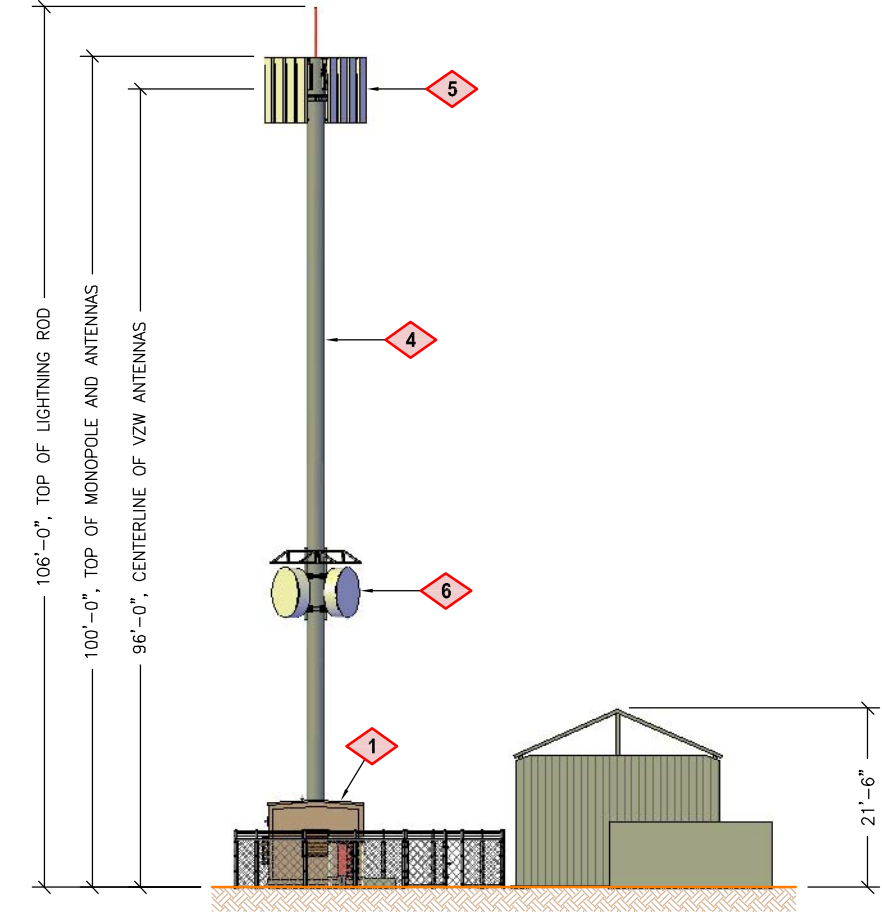
(N) VZW 32'-6" X 48'-3" (1570 SQ FT) LEASE AREA

(E) 21'-6" TALL BARN

SITE ELEVATION  
LOOKING NORTH



SITE ELEVATION  
LOOKING WEST



**verizon**  
wireless

VERIZON WIRELESS  
9656 SOUTH PROSPERITY ROAD  
WEST JORDAN, UTAH 84088

**TAEC**  
Technology Associates Engineering Corporation Inc.  
**TECHNOLOGY ASSOCIATES**

UTAH MARKET OFFICE  
5710 SOUTH GREEN STREET  
SALT LAKE CITY, UTAH 84123  
  
CORPORATE OFFICE  
3115 SOUTH MELROSE DRIVE, SUITE #110  
CARLSBAD, CALIFORNIA 92010

DRAWN BY: JAY C  
CHECKED BY: DAKOTA H

1	05.05.2014	REVISED ANTENNAS
0	04.29.2014	ZONING DRAWINGS
REV	DATE	DESCRIPTION

PRO - SCOTSMAN  
NW SEC 19, T9S, R2E  
1655 WEST 1130 SOUTH  
PAYSON, UTAH 84651  
-- RAWLAND SITE --

SHEET TITLE  
**SITE ELEVATIONS**

SHEET NUMBER  
**C200**